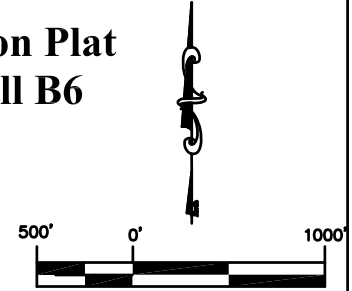
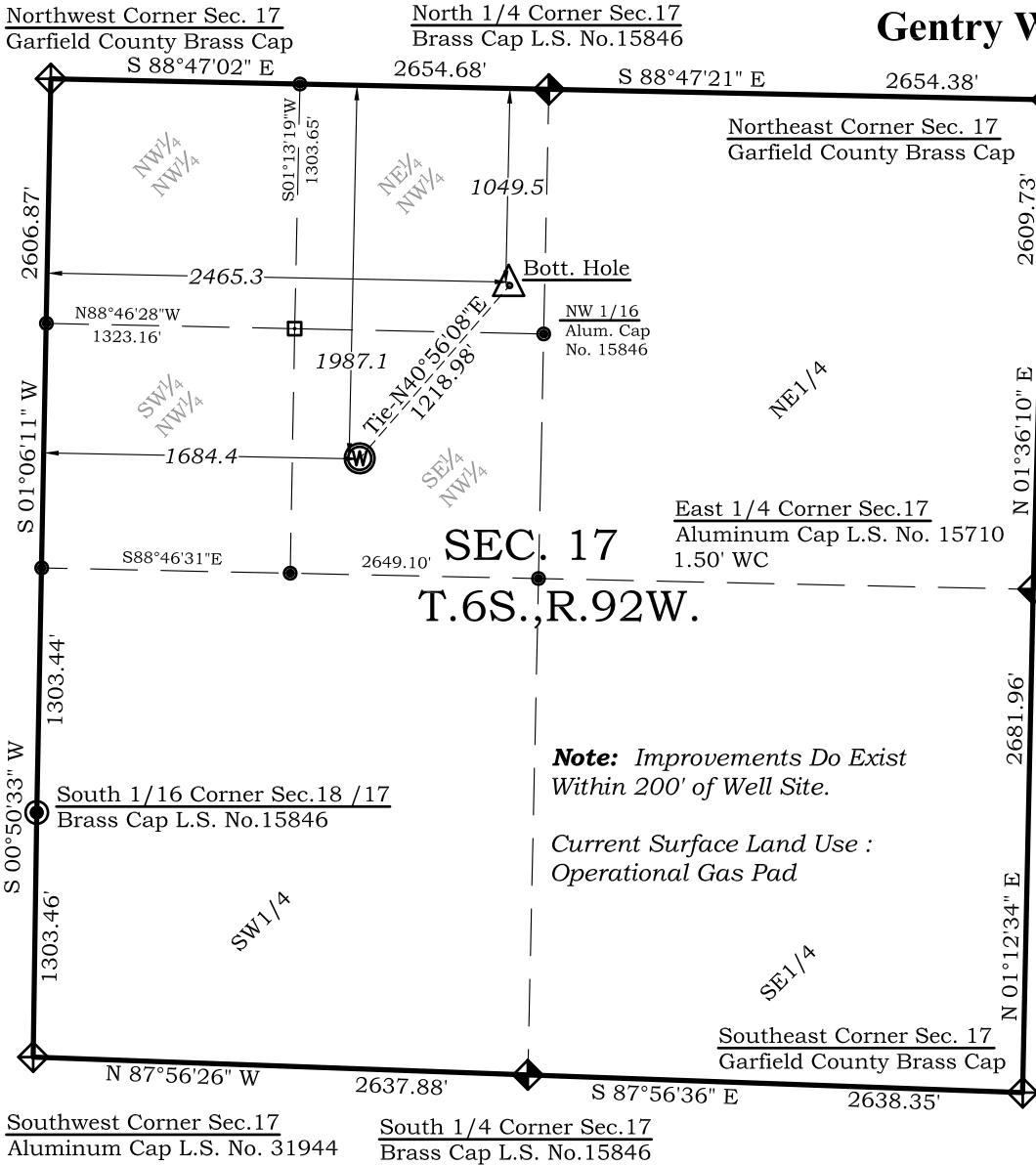


# Well Location Plat

## Gentry Well B6



### Legend

- Field Surveyed Section Corner
- Field Surveyed Quarter Corner
- Calculated Section Corner Location
- Field Surveyed 1/6 Corner

### Bottom Hole:

#### Gentry B6

1050' FNL

2465' FWL

#### NAD83

Lat: 39.531014321°N

Long: 107.691282985°W

#### NAD27

Lat: 39.531033801°N

Long: 107.690666800°W

### Surface: Gentry B6

1987' FNL

1684' FWL

Gnd El= 5624.5

Pad El= 5624.5

#### NAD83

Lat: 39.528422426°N

Long: 107.694014798°W

#### NAD27

Lat: 39.528441906°N

Long: 107.693398547°W

UTM 13 NORTH

#### NAD 1983

NORTHING

14366391.741

EASTING

880737.272

**Note:** Improvements Do Exist Within 200' of Well Site.

Current Surface Land Use :  
Operational Gas Pad

Prepared For Antero Resources

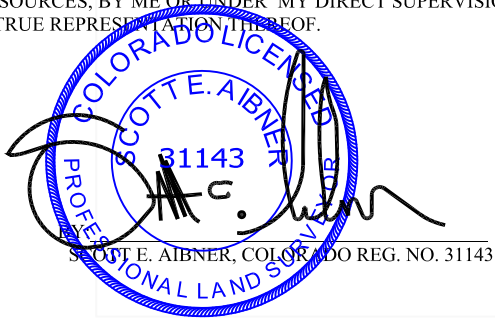
Proposed Gentry B6 Well Situate in The SE<sup>1</sup>/<sub>4</sub>NW<sup>1</sup>/<sub>4</sub> Section 17, Township 6 South, Range 92 West of the 6 th. Principal Meridian, County of Garfield, State of Colorado

### SURVEYOR'S CERTIFICATE

I, SCOTT E. AIBNER, A REGISTERED LAND SURVEYOR, LICENSED UNDER THE LAWS OF THE STATE OF COLORADO DO HEREBY CERTIFY THAT THE SURVEY SHOWN HEREON WAS PREPARED BY RIVER VALLEY SURVEY, INC., FOR ANTERO RESOURCES, BY ME OR UNDER MY DIRECT SUPERVISION AND THAT THIS PLAT IS A TRUE REPRESENTATION OF THE SAME.

### Notes:

- 1.) LATITUDE AND LONGITUDE COORDINATES ARE DIFFERENTIALLY CORRECTED AND BASED ON PUBLISHED NGS CONTROL STATION "WDP-5".
- SYSTEM: UTM ZONE: 13 NORTH DATUM: NAD 1983 (CONUS)
- 2.) ELEVATIONS ARE BASED ON NAVD OF 1929.
- 3.) ALL BOTTOM AND TOP HOLE LOCATIONS ARE MEASURED 90 DEGREES FROM SECTION LINE.
- 4.) USGS QUADRANGLE MAP "SILT CO".
- 5.) CURRENT SURFACE LAND USE: OPEN RANGELAND
- 6.) PDOP AT THE TIME OF LOCATION OF SURFACE WELL = 1.2
- 7.) BOTTOM HOLE DISTANCE TO NEAREST LEASE LINE IS 412.8'



**River Valley Survey, Inc.**  
110 East 3rd. Street, Suite 207  
Rifle, Colorado 81650  
Ph: 970-379-7846

Project: Gentry B Pad

Proj. No. 06001-11

Field Date: 01-19-07

Scale: 1"= 1000'

Date: 03-01-12

Sheet: 1 of 7

Well Location Plat  
Prepared For Antero Resources

Situate In:  
SE<sup>1</sup>/<sub>4</sub>NW<sup>1</sup>/<sub>4</sub> Section 17, T6S., R. 92 W.  
of the 6th P.M., Garfield County,  
Colorado

