

Well Name: **RUTT ADAMS HEIRS 01-22**

Well Config: VERTICAL - ORIGINAL HOLE, 3/7/2012 3:36:55 PM

Well Header

API	Business Unit	Spud Date	Well Configuration Type
05-123-10657	WATTENBERG	6/7/1982	VERTICAL
Orig KB Elev (ft)	KB - GL / ...	Quarter Quarter	Sec/Abs
4,742.00	12	NESW	22
	Twn/Sur...	Range	P & A Date
	6N	66W	

Comment
CSG REPAIR/REMEDIAL CEMENT SQZ, UNCLEAR WHICH IT IS 4/1984; SQZ HOLES @ 2875'-2800'

Directions To Well
WCR 66 & 31, EAST 0.2, NORTH 0.3, EAST 0.1, NORTH INTO.

Current PBTB (ftKB)
ORIGINAL HOLE - 7223.6

Bottom Hole Location

North-South Distance (ft)	From N or S Line	East-West Distance (ft)	From E or W Line

PBTBs

Date	Depth (ftKB)	Method	Comment
6/14/1982	7,222.0	CASED HOLE LOG	DEPTH LOGGER ON CBL
10/8/2004	7,223.0	TAG	C/O & LAND TBG

Wellbore Sections

Section	Size (in)	Act Top (ftKB)	Act Btm (ftKB)
SURFACE	12 1/4	12.0	545.0
PRODUCTION	7 7/8	545.0	7,280.0

Zone Statuses

Zone	Status Date	Status	Job
CODELL	2/1/1983	PR	DRILLING/COMPLETION - ORIGI...
CODELL	11/8/2004	PR	RE-FRAC, 9/30/2004 00:00
CODELL	12/19/2011	PR	TRI-FRAC, 10/21/2011 11:00

Casing Strings

Casing Description	Run Date	String OD (in)	String Wt (lbs/ft)	String Grade	Top (ftKB)	Set Depth (ftKB)
Surface	6/7/1982	8 5/8	24.00	?	12.0	532.0
Production	6/14/1982	4 1/2	10.50	K-55	12.0	7,279.0

Cement

Description	Top (ftKB)	Btm (ftKB)
SURFACE CASING CEMENT	12.0	532.0
REMEDIAL CEMENT SQUEEZE	2,703.0	2,900.0
PRODUCTION CASING CEMENT	6,112.0	7,279.0

Tubing Components

Item Description	OD (in)	Wt (lbs/ft)	Grade	Jts	Len (ft)
EUE 8rd Tubing	2 3/8	4.70	J-55	230	7,132.09
Notch Seat Nipple	2 3/8	4.70	N-80	1	1.20

Perforation Data

Zone	Bnch/Stg	Entered Shot Total	Top (ftKB)	Btm (ftKB)	Date
		15	2,875.0	2,800.0	4/25/1984
CODELL, ORIGINA...		68	7,160.0	7,177.0	10/4/2004
CODELL, ORIGINA...		21	7,166.0	7,176.0	6/18/1982

Stimulations & Treatments

Bnch/...	Date	Zone	Primary Job Type
	6/20/1982	CODELL, ORIGINAL HOLE	DRILLING/COMPLETION - ORIGINAL

Comment

Total Add Amount	V (pumped) (gal)	V (slurry) (gal)	V (gas) (mcf)
Proppant FLA-100 18000 lb; Proppant 142000 lb		110712	

Avg Treat Pressure (psi)	Max Treat Pressure (psi)	Avg Treat Rate (bbl/min)	Max Treat Rate (bbl/min)
5,500.0	6,400.0	12.00	

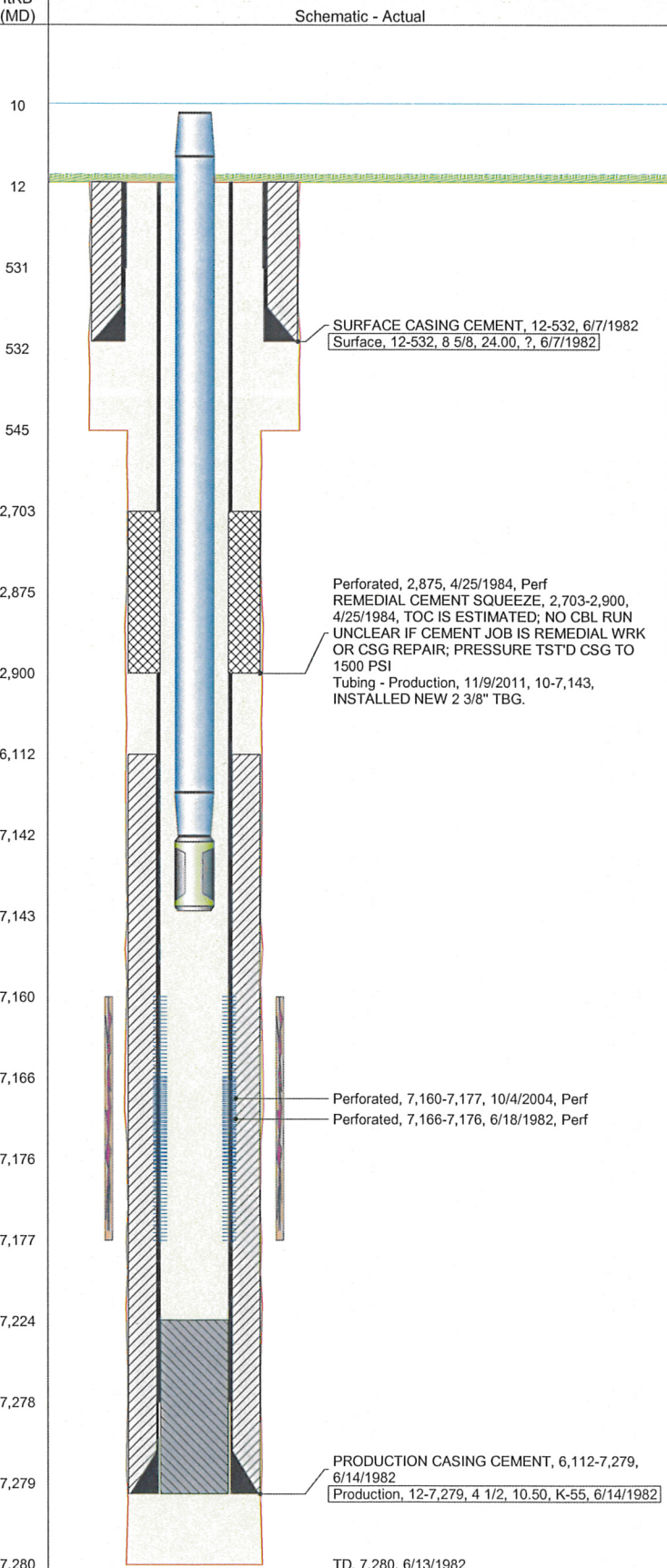
Bnch/...	Date	Zone	Primary Job Type
	10/6/2004	CODELL, ORIGINAL HOLE	RE-FRAC

Comment

Total Add Amount	V (pumped) (gal)	V (slurry) (gal)	V (gas) (mcf)
Proppant 246060 lb		131460	

Avg Treat Pressure (psi)	Max Treat Pressure (psi)	Avg Treat Rate (bbl/min)	Max Treat Rate (bbl/min)
4,955.0	6,032.0	18.00	18.00

TD, 7,280, 6/13/1982



Well Name: RUTT ADAMS HEIRS 01-22

Well Config: VERTICAL - ORIGINAL HOLE, 3/7/2012 3:36:55 PM

Stimulations & Treatments

Bnch/...	Date	Zone	Primary Job Type
	11/3/2011	CODELL, ORIGINAL HOLE	TRI-FRAC
Comment			
(CODELL TF): HAD AN 8:00 RTS, STARTED PUMPING AT 17:30. POST-FRAC: JOB WENT WELL. NO ISSUES TO REPORT. TREATMENT AVGS: 64.2 F, 10.24 PH, 27.6 CP, NOLTE = 0.03. 5 MIN = 2557 PSI.			
Total Add Amount		V (pumped) (gal)	V (slurry) (gal)
Proppant Ottawa 246448.203 lb		129558	140769
V (gas) (mcf)			
Avg Treat Pressure (psi)	Max Treat Pressure (psi)	Avg Treat Rate (bbl/min)	Max Treat Rate (bbl/min)
5,658.0	6,595.0	19.50	19.90

Other In Hole

Run Date	Description	OD (in)	Top (ftKB)	Btm (ftKB)

Logs

Date	Type	Top (ftKB)	Btm (ftKB)
6/13/1982	COMPENSATED NEUTRON/DENSITY	4,298.0	7,276.0
6/13/1982	CYBERLOOK	6,850.0	7,210.0
6/17/1982	CEMENT BOND	6,000.0	7,220.0

