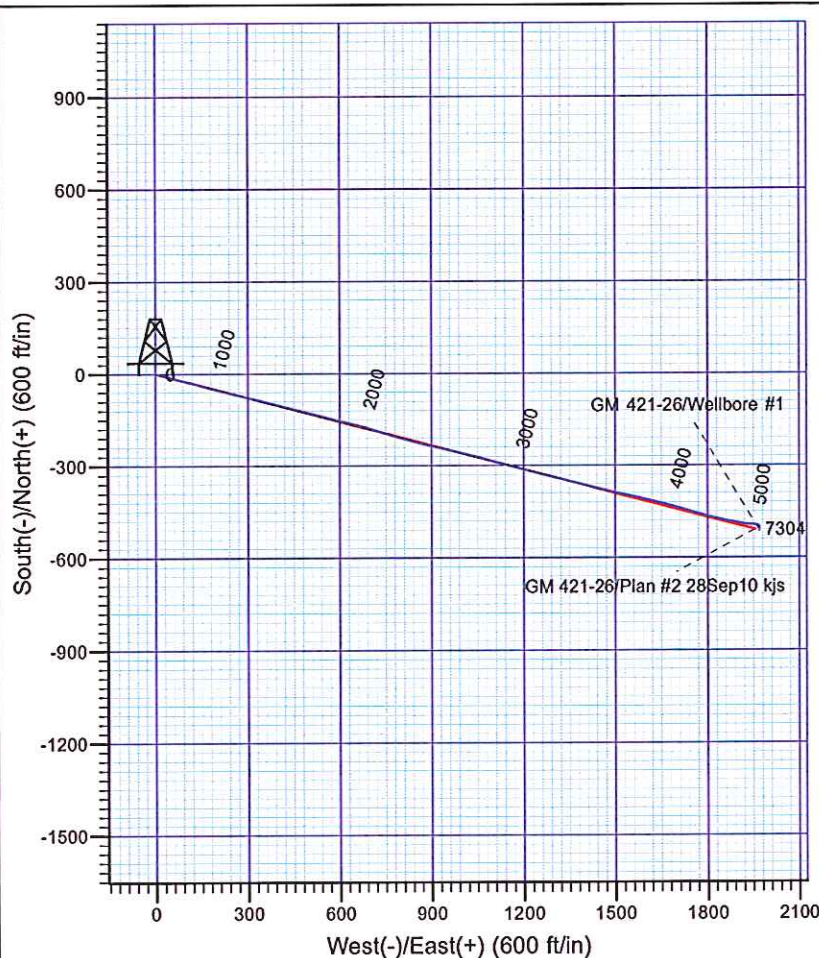
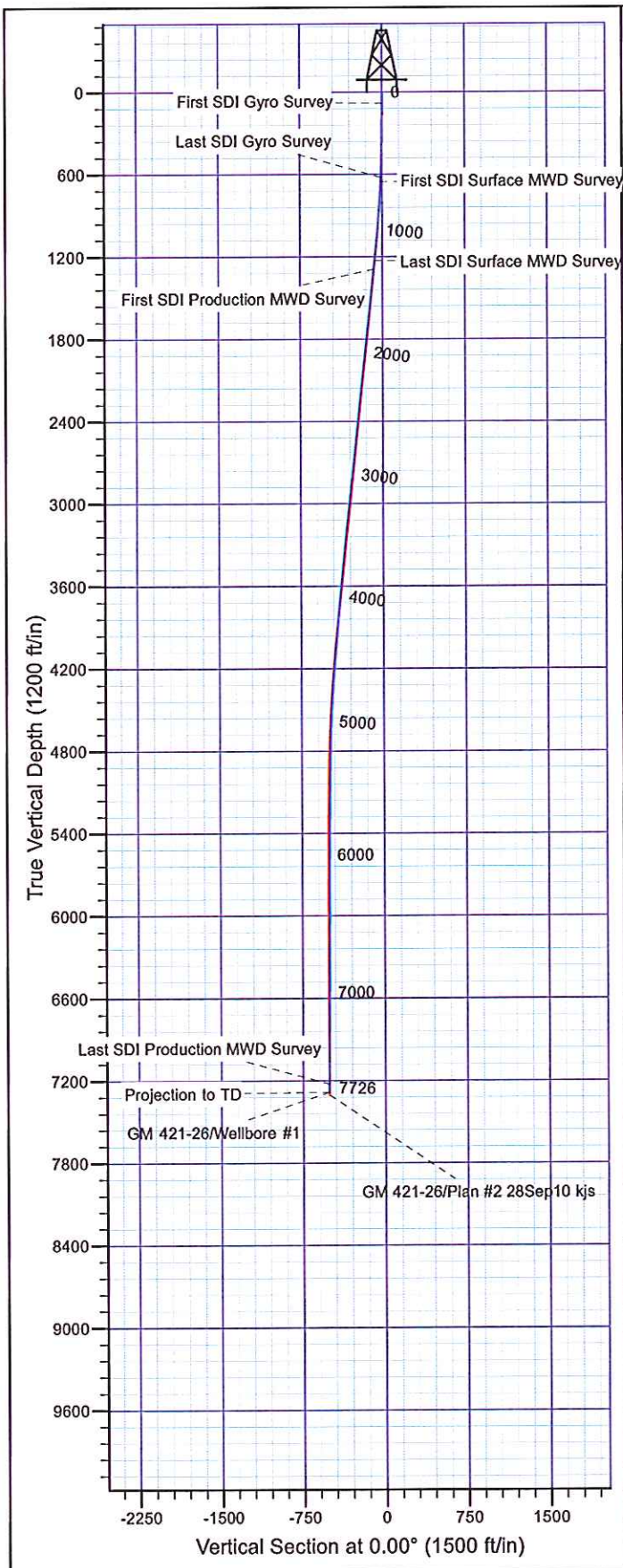




**Scientific Drilling**  
Rocky Mountain Operations

Company: Williams Production Co.  
Project: Rulison - NAD83  
Site: MV 23-27 Pad  
Well: GM 421-26  
Wellbore: Wellbore #1  
Design: Wellbore #1



#### Well Details: GM 421-26

TVD Reference: KELLY BUSHING @ 5794.01ft (H&P 280 (24' RKB) kjs) Level: 5770.01  
 +N/-S +E/-W Northing Easting Latitude Longitude Slot  
 0.00 0.00 1617278.50 2269867.90 39° 29' 58.765 N 108° 5' 15.958 W

#### REFERENCE INFORMATION

Co-ordinate (N/E) Reference: Well GM 421-26, True North  
 Vertical (TVD) Reference: KELLY BUSHING @ 5794.01ft (H&P 280 (24' RKB) kjs)  
 Section (VS) Reference: Slot - (0.00N, 0.00E)  
 Measured Depth Reference: KELLY BUSHING @ 5794.01ft (H&P 280 (24' RKB) kjs)  
 Calculation Method: Minimum Curvature

#### PROJECT DETAILS: Rulison - NAD83

Geodetic System: US State Plane 1983  
 Datum: North American Datum 1983  
 Ellipsoid: GRS 1980  
 Zone: Colorado Central Zone

System Datum: Mean Sea Level

Plan: Wellbore #1

10:18, September 15 2011  
 Created By: Janie Cooke