

**HALLIBURTON**

---

**WILLIAMS PRODUCTION RMT INC - EBUS**

---

**GM 421-26  
GRAND VALLEY  
Garfield County , Colorado**

**Cement Surface Casing**

**08-Sep-2011**

**Job Site Documents**

*The Road to Excellence Starts with Safety*

Sold To #: 300721	Ship To #: 2874296	Quote #:	Sales Order #: 8420986
Customer: WILLIAMS PRODUCTION RMT INC - EBUS	Customer Rep: Wilson, W.C.		
Well Name: GM	Well #: 421-26	API/UWI #: 05-045-20219	
Field: GRAND VALLEY	City (SAP): PARACHUTE	County/Parish: Garfield	State: Colorado
Lat: N 39.5 deg. OR N 39 deg. 29 min. 58.765 secs.	Long: W 108.088 deg. OR W -109 deg. 54 min. 44.042 secs.		
Contractor: H&P Drilling	Rig/Platform Name/Num: H&P 280		
Job Purpose: Cement Surface Casing			
Well Type: Development Well	Job Type: Cement Surface Casing		
Sales Person: KOHL, KYLE	Srvc Supervisor: SMITH, CHRISTOPHER	MBU ID Emp #: 452619	

**Job Personnel**

HES Emp Name	Exp Hrs	Emp #	HES Emp Name	Exp Hrs	Emp #	HES Emp Name	Exp Hrs	Emp #
BLANCHETTE, JAMES George	6	371360	GOWEN, WESLEY M	6	496205	HAYES, JESSE Doug	6	403601
SMITH, CHRISTOPHER Scott	6	452619	VANALSTYNE, TROY L	6	420256			

**Equipment**

HES Unit #	Distance-1 way	HES Unit #	Distance-1 way	HES Unit #	Distance-1 way	HES Unit #	Distance-1 way
10722398	60 mile	10744648C	60 mile	10998508	60 mile	11139330	60 mile
11259882	60 mile						

**Job Hours**

Date	On Location Hours	Operating Hours	Date	On Location Hours	Operating Hours	Date	On Location Hours	Operating Hours
09.8.11	6	1						

**TOTAL** Total is the sum of each column separately

**Job**

**Job Times**

Formation Name		Date	Time	Time Zone
Formation Depth (MD)	Top Bottom	Called Out	08 - Sep - 2011 05:30	MST
Form Type	BHST	On Location	08 - Sep - 2011 10:00	MST
Job depth MD	1336. ft	Job Started	08 - Sep - 2011 13:30	MST
Water Depth	Wk Ht Above Floor	Job Completed	08 - Sep - 2011 14:40	MST
Perforation Depth (MD)	From To	Departed Loc	08 - Sep - 2011 16:00	MST

**Well Data**

Description	New / Used	Max pressure psig	Size in	ID in	Weight lbm/ft	Thread	Grade	Top MD ft	Bottom MD ft	Top TVD ft	Bottom TVD ft
13 1/2" Open Hole				13.5				.	1336.		
9 5/8" Surface Casing	New		9.625	9.001	32.3		H-40	.	1336.		

**Tools and Accessories**

Type	Size	Qty	Make	Depth	Type	Size	Qty	Make	Depth	Type	Size	Qty	Make
Guide Shoe					Packer					Top Plug			
Float Shoe					Bridge Plug					Bottom Plug			
Float Collar					Retainer					SSR plug set			
Insert Float										Plug Container			
Stage Tool										Centralizers			

**Miscellaneous Materials**

Gelling Agt	Conc	Surfactant	Conc	Acid Type	Qty	Conc	%
Treatment Fld	Conc	Inhibitor	Conc	Sand Type	Size	Qty	

**Fluid Data**

Stage/Plug #: 1

Fluid #	Stage Type	Fluid Name	Qty	Qty uom	Mixing Density lbm/gal	Yield ft <sup>3</sup> /sk	Mix Fluid Gal/sk	Rate bbl/min	Total Mix Fluid Gal/sk
1	Water Spacer		20.00	bbl	8.34	.0	.0	4	
2	VersaCem Lead Cement	VERSACEM (TM) SYSTEM (452010)	174.0	sacks	12.3	2.38	13.75	8	13.75
	13.75 Gal	FRESH WATER							
3	VersaCem Tail Cement	VERSACEM (TM) SYSTEM (452010)	160.0	sacks	12.8	2.11	11.75	8	11.75
	11.75 Gal	FRESH WATER							
4	Displacement Fluid		100.00	bbl	8.34	.0	.0	10	
<b>Calculated Values</b>		<b>Pressures</b>		<b>Volumes</b>					
Displacement	100	Shut In: Instant		Lost Returns		Cement Slurry	135	Pad	
Top Of Cement		5 Min		Cement Returns	21	Actual Displacement	100	Treatment	
Frac Gradient		15 Min		Spacers	20	Load and Breakdown		Total Job	255
<b>Rates</b>									
Circulating	14	Mixing	8	Displacement	10	Avg. Job	9		
Cement Left In Pipe	Amount	0 ft	Reason	Shoe Joint					
Frac Ring # 1 @	ID	Frac ring # 2 @	ID	Frac Ring # 3 @	ID	Frac Ring # 4 @	ID		
The Information Stated Herein Is Correct				Customer Representative Signature					



*The Road to Excellence Starts with Safety*

Sold To #: 300721	Ship To #: 2874296	Quote #:	Sales Order #: 8420986
Customer: WILLIAMS PRODUCTION RMT INC - EBUS	Customer Rep: Wilson, W.C.		
Well Name: GM	Well #: 421-26	API/UWI #: 05-045-20219	
Field: GRAND VALLEY	City (SAP): PARACHUTE	County/Parish: Garfield	State: Colorado
Legal Description:			
Lat: N 39.5 deg. OR N 39 deg. 29 min. 58.765 secs.		Long: W 108.088 deg. OR W -109 deg. 54 min. 44.042 secs.	
Contractor: H&P Drilling	Rig/Platform Name/Num: H&P 280		
Job Purpose: Cement Surface Casing	Ticket Amount:		
Well Type: Development Well	Job Type: Cement Surface Casing		
Sales Person: KOHL, KYLE	Srv Supervisor: SMITH, CHRISTOPHER	MBU ID Emp #: 452619	

Activity Description	Date/Time	Cht #	Rate bbl/min	Volume bbl		Pressure psig		Comments
				Stage	Total	Tubing	Casing	
Pre-Convoy Safety Meeting	09/08/2011 08:00							ALL HES PERSONEL
Crew Leave Yard	09/08/2011 08:30							
Arrive At Loc	09/08/2011 10:00							RIG RUNNING CASEING.
Assessment Of Location Safety Meeting	09/08/2011 10:20							ALL HES PERSONEL
Rig-Up Equipment	09/08/2011 13:00							
Pre-Job Safety Meeting	09/08/2011 13:20							ALL HES PERSONEL, RIG CREW AND COMP REP
Start Job	09/08/2011 13:30							TD 1336', TP 1321.1', SJ 42.5', OH 13.5', CSG 9.625" 32.3# J-55 , MUD 10.3 PPG.
Other	09/08/2011 13:30		2	2			53.0	FILL LINES WITH 6X5, 6X5 STALLED OUT AND LINES WERE FILLED WITH HT.
Pressure Test	09/08/2011 13:35		0.5	0.5				LOW TEST, ALL LINES HELD PRESSURE @ 546 PSI
Pressure Test	09/08/2011 13:37		0.5	0.5				HIGH TEST, ALL LINES HELD PRESSURE @ 32784 PSI
Pump Spacer 1	09/08/2011 13:40		4	20			70.0	FRESH WATER
Pump Lead Cement	09/08/2011 13:51		8	74.6			450.0	174 SKS, 12.3 PPG, 2.38 FT3/SK, 13.75 GAL/SK, SET UP TIME 4:11 @ 70 BC.
Activity Description	Date/Time	Cht	Rate bbl/min	Volume bbl		Pressure psig		Comments

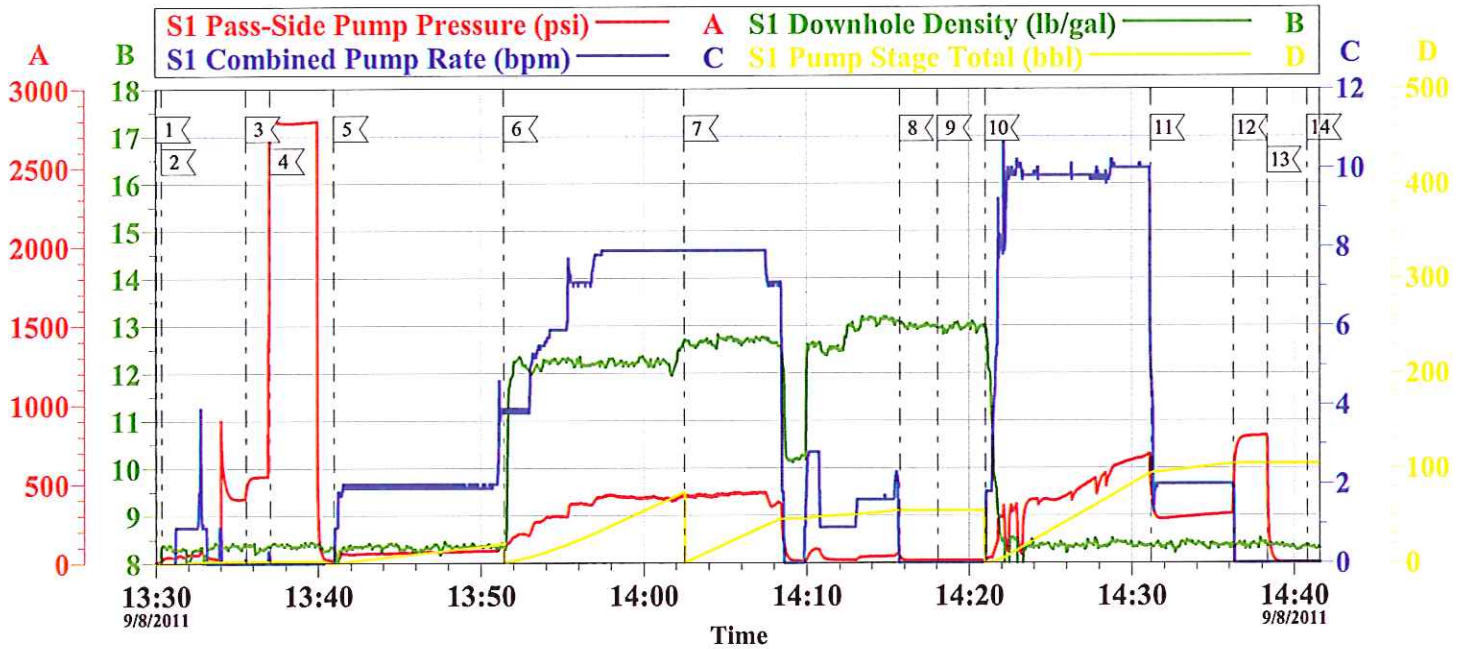
## Cementing Job Log

		#		Stage	Total	Tubing	Casing	
Pump Tail Cement	09/08/2011 14:02		8	60			430.0	160 SKS, 12.8 PPG, 2.11 FT3/ SK, 11.75 GAL/SK, SET UP TIME 2:20 @ 70 BC. SHUTDOWN DURING TAIL CEMENT WITH 45 GONE, DENSITY WAS HIGH, CHART SHOWS DOWNHOLE WEIGHT LOW, WEIGHT IS LOW DUE TO WELL BEING ON A SUCK, TUB WAS LINED OUT AND TAIL WAS FINISHED.
Shutdown	09/08/2011 14:15							
Drop Top Plug	09/08/2011 14:18							
Pump Displacement	09/08/2011 14:21		10	90.6			650.0	FRESH WATER
Slow Rate	09/08/2011 14:31		4	10			295.0	
Bump Plug	09/08/2011 14:36						800.0	PLUG BUMPED
Check Floats	09/08/2011 14:38							FLOATS HELD
End Job	09/08/2011 14:40							GOOD CIRCULATION THROUGHOUT JOB, 21 BBLs OF GOOD CEMENT TO SURFACE, PIPE WAS NOT MOVED DURING THE JOB.
Post-Job Safety Meeting (Pre Rig-Down)	09/08/2011 14:50							ALL HES PERSONEL
Rig-Down Completed	09/08/2011 15:35							
Depart Location Safety Meeting	09/08/2011 15:45							ALL HES PERSONEL
Crew Leave Location	09/08/2011 16:00							
Other	09/08/2011 16:01							THANK YOU FOR CHOOSING HALLIBURTON, CHRIS SMITH AND CREW



# WILLIMAS

## 9.625" SURFACE/ GM 421-36



Local Event Log											
Maximum			SPPP	Maximum			SPPP	Maximum		SPPP	
1	START JOB	13:30:02	24.13	2	FILL LINES	13:30:22	898.0	3	TEST LINES (LOW)	13:35:35	2714
4	TEST LINES (HIGH)	13:37:05	2793	5	H2O SPACER	13:40:59	126.0	6	LEAD CEMENT	13:51:25	431.0
7	TAIL CEMENT	14:02:30	447.0	8	SHUTDOWN	14:15:44	39.00	9	DROP PLUG	14:18:04	12.00
10	H2O DISPLACEMENT	14:21:00	687.0	11	SLOW RATE	14:31:10	511.0	12	BUMP PLUG	14:36:15	806.0
13	CHECK FLOATS	14:38:20	777.0	14	END JOB	14:40:49	3.000				

Customer: WILLIAMS PRODUCTION RMT INC - EBUS  
 Well Description: GM 421-26  
 Customer Rep: WC. WILSON

Job Date: 08-Sep-2011  
 Job type: 05-045-20219  
 Service Supervisor: C. SMITH

Sales Order #: 8420986  
 ADC Used: YES  
 Operator/ Pump: J.HAYES/ E6

OptiCem v6.4.10  
 08-Sep-11 15:03