

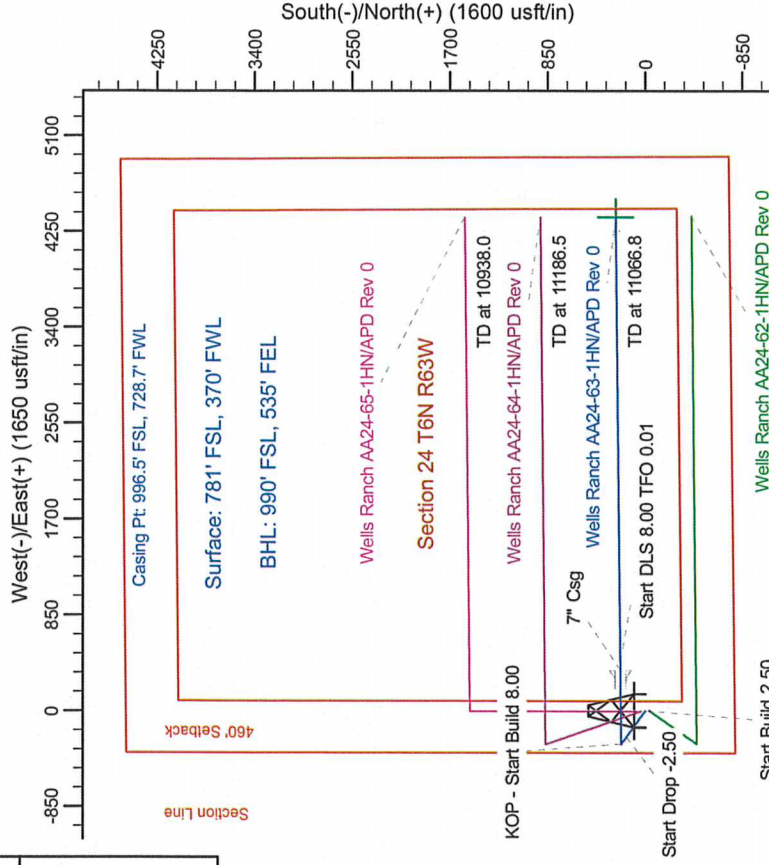
Project: Wattenberg Field  
Site: AA (Sec.24-T06N-63W) Weld County, CO  
Well: Wells Ranch AA24-63-1HN  
Wellbore: Original Drilling  
Design: APD Rev 0

# Northern Region Drilling

Geodetic System: US State Plane 1983  
Datum: North American Datum 1983  
Ellipsoid: GRS 1980  
Zone: Colorado Northern Zone  
System Datum: Mean Sea Level

## SECTION DETAILS

Sec	MD	Inc	Azi	TVD	+N/S	+E/W	Dleg	TFace	VSept	Target
1	0.0	0.00	0.00	0.0	0.0	0.0	0.00	0.00	0.0	
2	2500.0	0.00	0.00	2500.0	0.0	0.0	0.00	0.00	0.0	
3	3100.5	15.01	305.32	3093.7	45.2	-63.8	2.50	305.32	-61.1	
4	3892.2	15.01	305.32	3856.3	163.8	-231.2	0.00	0.00	-221.2	
5	4492.7	0.00	0.00	4452.0	209.0	-295.0	2.50	180.00	-282.3	
6	5983.0	0.00	0.00	5942.3	209.0	-295.0	0.00	0.00	-282.3	
7	7045.5	85.00	89.43	6655.8	215.5	358.7	8.00	89.43	370.7	
8	7120.5	85.00	89.43	6662.3	216.2	433.5	0.00	0.00	445.3	
9	7183.0	90.00	89.43	6665.0	216.9	495.9	8.00	0.01	507.7	
10	11066.8	90.00	89.43	6665.0	255.5	4379.5	0.00	0.00	4386.9	



**T G M**

Azimuths to Grid North  
True North:  $-0.71^\circ$   
Magnetic North:  $7.82^\circ$

Magnetic Field  
Strength:  $53159.9 \text{ nT}$   
Dip Angle:  $67.15^\circ$   
Date: 2/6/2012  
Model: IGRF200510

WELL DETAILS: Wells Ranch AA24-63-1HN		
North	East	Ground Level: 4826.0
1414846.47	3307934.82	40° 28' 0.768 N 104° 23' 35.628 W

Plan: APD Rev 0 (Wells Ranch AA24-63-1HN/Original Drilling)	
Created By: Carrie Willers	Date: 17:08, February 13 2012

