

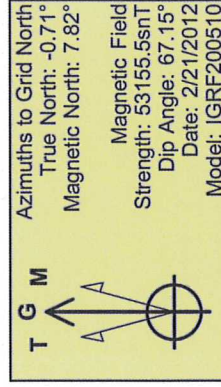
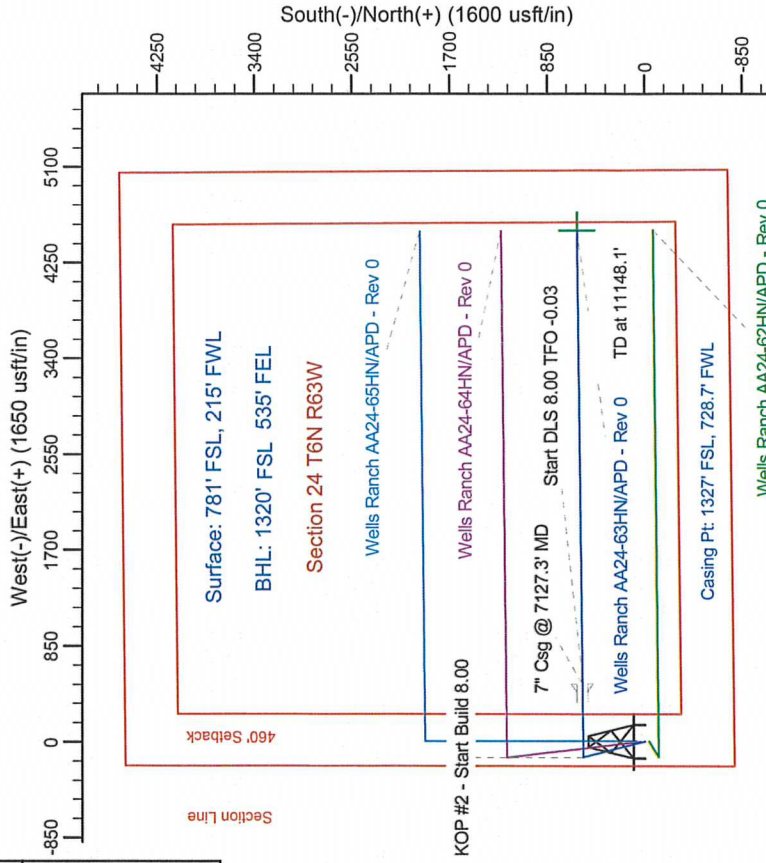
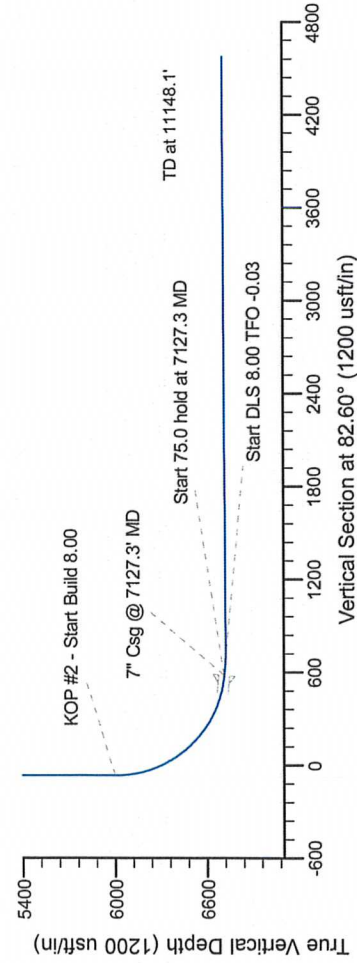
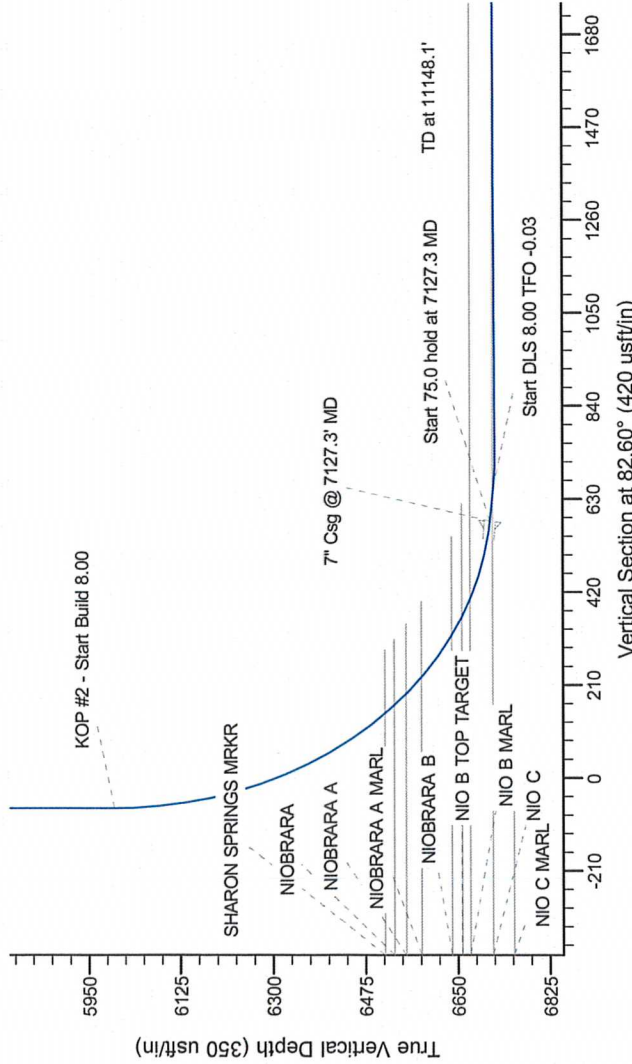
Project: Wattenberg Field
Site: AA (Sec.24-T6N-R63W) Weld County, CO
Well: Wells Ranch AA24-63HN
Design: APD - Rev 0

Northern Region Drilling

Geodetic System: US State Plane 1983
Datum: North American Datum 1983
Ellipsoid: GRS 1980
Zone: Colorado Northern Zone
System Datum: Mean Sea Level

SECTION DETAILS

Sec	MD	Inc	Azi	TVD	+N/-S	+E/-W	Dleg	TFace	V/Sect	Target
1	0.0	0.00	0.00	0.0	0.0	0.0	0.00	0.00	0.0	
2	2000.0	0.00	0.00	2000.0	0.0	0.0	0.00	0.00	0.0	
3	2593.1	14.83	345.44	2586.5	73.9	-19.2	2.50	345.44	-9.5	
4	4172.7	14.83	345.44	4113.5	465.1	-120.8	0.00	0.00	-59.9	
5	4765.8	0.00	0.00	4700.0	539.0	-140.0	2.50	180.00	-69.4	
6	6064.8	0.00	0.00	5999.0	539.0	-140.0	0.00	0.00	-69.4	
7	7127.3	85.00	89.39	6712.5	546.0	513.7	8.00	89.39	579.8	
8	7202.3	85.00	89.39	6719.0	546.8	588.4	0.00	0.00	654.0	
9	7267.0	90.18	89.39	6721.7	547.4	653.1	8.00	-0.03	718.2	
10	11148.1	90.18	89.39	6709.6	586.9	4533.9	0.00	0.00	4572.0	BHL 1320'FSL, 535'FEL



WELL DETAILS: Wells Ranch AA24-63HN

Ground Level: 4830.0
Northing: 1414844.52
Easting: 3307779.02
Latitude: 40.466880
Longitude: -104.393790

Plan: APD - Rev 0 (Wells Ranch AA24-63HN/Original Drilling)

Created By: Carrie Willers
Date: 16:48, February 22 2012