

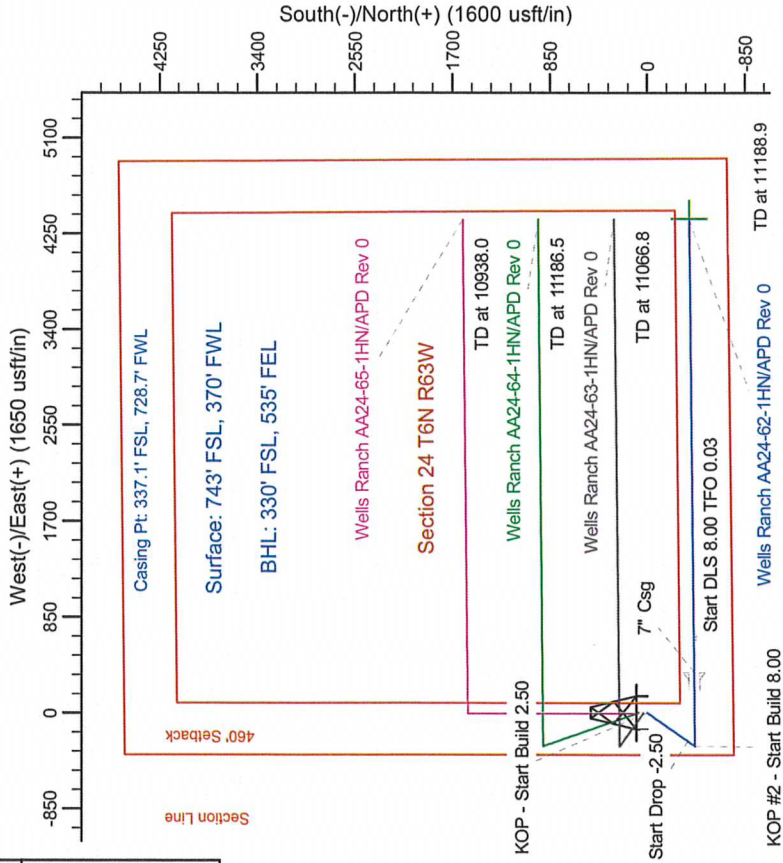
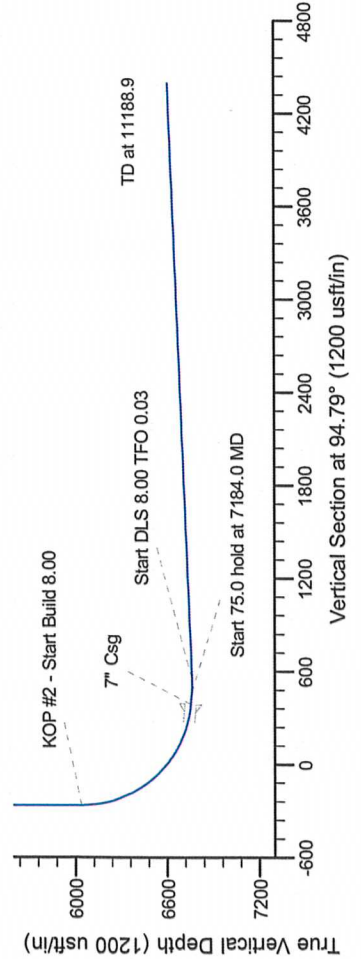
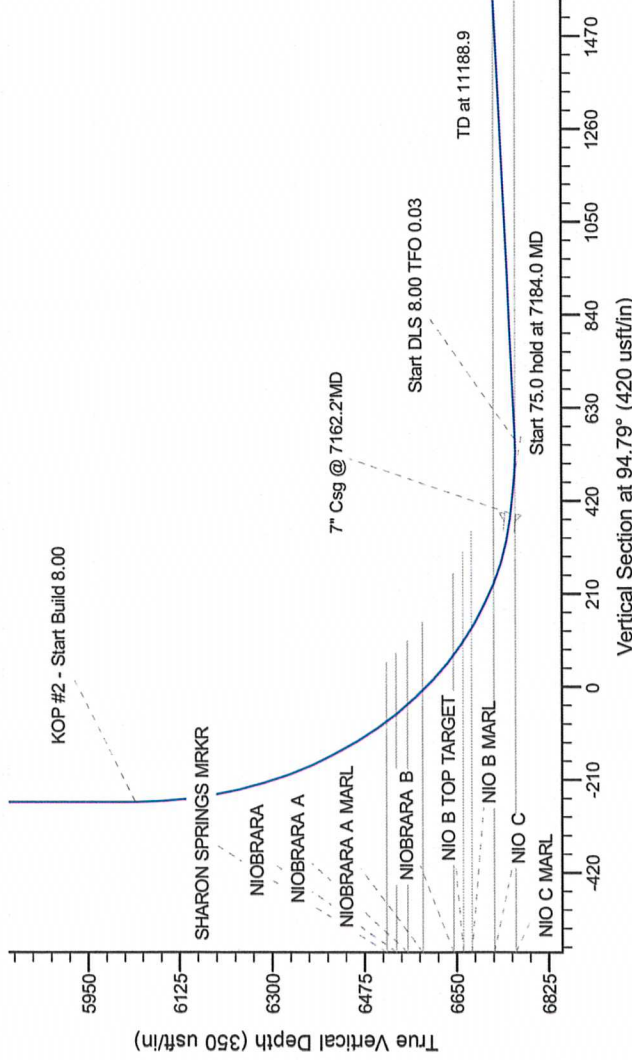
Project: Wallenberg Field  
Site: AA (Sec.24-T06N-63W) Weld County, CO  
Well: Wells Ranch AA24-62-1HN  
Wellbore: Original Drilling  
Design: APD Rev 0

# Northern Region Drilling

Geodetic System: US State Plane 1983  
Datum: North American Datum 1983  
Ellipsoid: GRS 1980  
Zone: Colorado Northern Zone  
System Datum: Mean Sea Level

SECTION DETAILS

Sec	MD	Inc	Azi	TVD	+N/-S	+E/-W	Dleg	TFace	VSecl	Target
1	0.0	0.00	0.00	0.0	0.0	0.0	0.00	0.00	0.0	
2	1750.0	0.00	0.00	1750.0	0.0	0.0	0.00	0.00	0.0	
3	2349.0	14.97	215.54	2342.2	-63.3	-45.2	2.50	215.54	-39.8	
4	3710.9	14.97	215.54	3657.8	-349.7	-249.8	0.00	0.00	-219.7	
5	4309.8	0.00	0.00	4250.0	-413.0	-295.0	2.50	180.00	-259.4	
6	6095.7	0.00	0.00	6039.9	-413.0	-295.0	0.00	0.00	-259.4	
7	7162.2	85.00	89.44	6753.3	-406.6	-358.7	8.00	89.44	391.5	
8	7237.2	92.30	89.44	6759.9	-405.9	-358.7	0.00	0.00	465.9	
9	7328.5	92.30	89.44	6762.0	-405.0	-358.7	0.00	0.03	556.6	
10	11188.9	92.30	89.44	6807.0	-367.5	-4381.6	0.00	0.00	4387.2	



**WELL DETAILS: Wells Ranch AA24-62-1HN**

Northings: 1414810.04  
Eastings: 3307935.27  
Ground Level: 4825.0  
Latitude: 40° 28' 0.408 N  
Longitude: 104° 23' 35.628 W

Plan: APD Rev 0 (Wells Ranch AA24-62-1HN/Original Drilling)  
Created By: Carrie Willers  
Date: 18:11, February 13 2012

Model: IGRF200510

Mag. Field Strength: 53159.8nT  
Dip Angle: 67.15°  
Date: 2/6/2012

Mag. North: 7.82°  
True North: -0.71°  
Azimuths to Grid North