

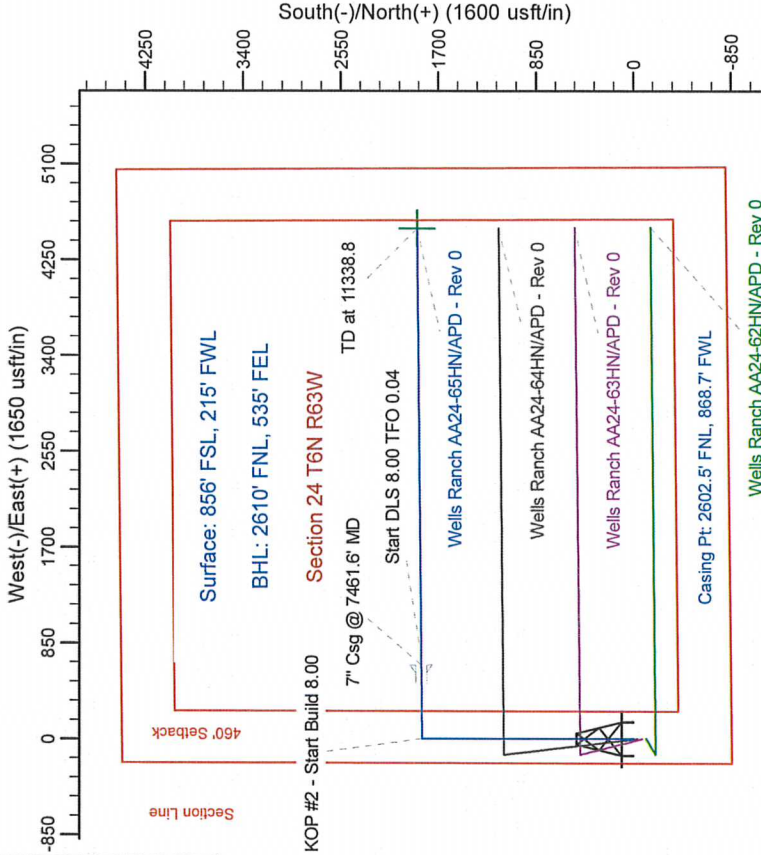
# Northern Region Drilling

Project: Wattenberg Field  
 Site: AA (Sec.24-T06N-R63W) Weld County, CO  
 Well: Wells Ranch AA24-65HN  
 Wellbore: Original Drilling  
 Design: APD - Rev 0

Geodetic System: US State Plane 1983  
 Datum: North American Datum 1983  
 Ellipsoid: GRS 1980  
 Zone: Colorado Northern Zone  
 System Datum: Mean Sea Level

## SECTION DETAILS

Sec	MD	Inc	Azi	TVD	+N/-S	+E/-W	Dleg	TFace	VSect	Target
1	0.0	0.00	0.00	0.0	0.0	0.00	0.00	0.00	0.0	
2	700.0	0.00	0.00	700.0	0.0	0.00	0.00	0.00	0.0	
3	1621.9	23.05	0.00	1597.2	182.9	0.0	0.00	0.00	70.2	
4	5377.2	23.05	0.00	5052.8	1653.1	0.0	0.00	0.00	634.8	
5	6299.1	0.00	0.00	5950.0	1836.0	0.0	2.50	180.00	705.0	
6	6399.1	0.00	0.00	6050.0	1836.0	0.0	0.00	0.00	705.0	
7	7461.6	85.00	89.41	6763.5	1842.7	653.7	8.00	89.41	1311.2	
8	7596.6	85.00	89.41	6770.0	1843.5	728.5	0.00	0.00	1380.5	
9	7634.7	92.65	89.42	6771.8	1844.5	826.5	8.00	0.00	1471.4	
10	11338.8	92.65	89.42	6587.8	1882.3	4523.8	0.00	0.04	4901.6	BHL 2610'FNL, 535'FEL



**TGM**

Azimuths to Grid North  
 True North: -0.71°  
 Magnetic North: 7.82°  
 Magnetic Field  
 Strength: 53155.6snT  
 Dip Angle: 67.15°  
 Date: 2/21/2012  
 Model: IGRF200510

WELL DETAILS: Wells Ranch AA24-65HN

Ground Level: 4831.0	Longitude
Northing Easting Latitude	Longitude
1414921.06 3307780.84 40.467090	-104.393780

Plan: APD - Rev 0 (Wells Ranch AA24-65HN/Original Drilling)  
 Created By: Carrie Willers Date: 16.14, February 22 2012

