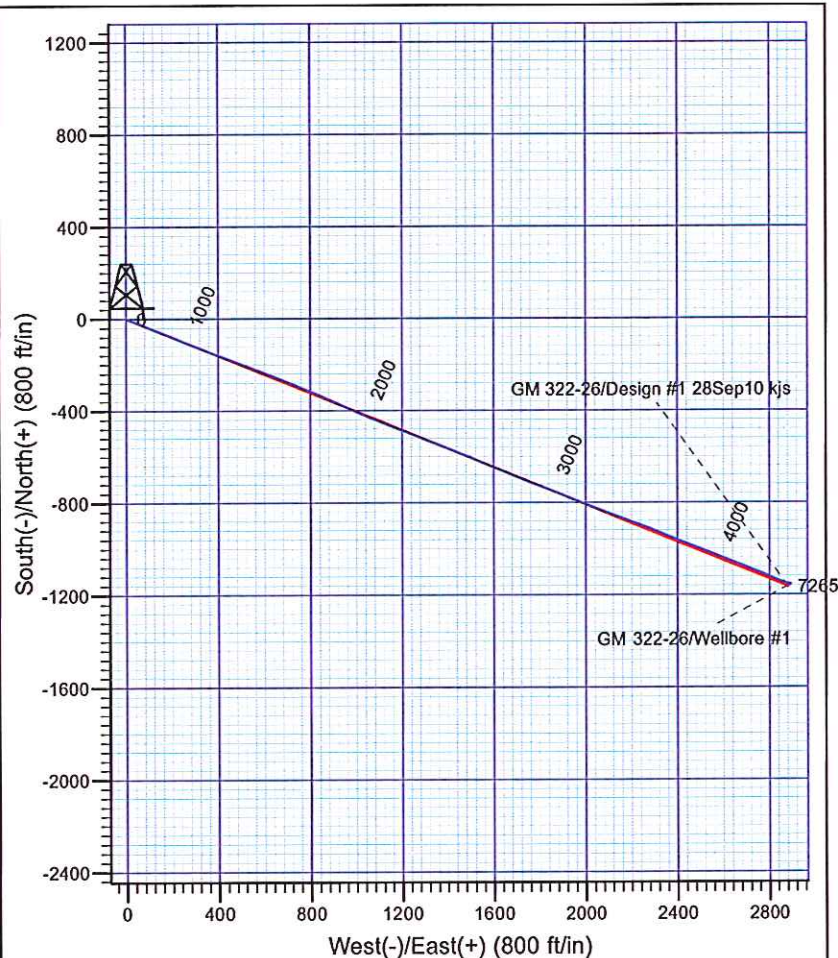
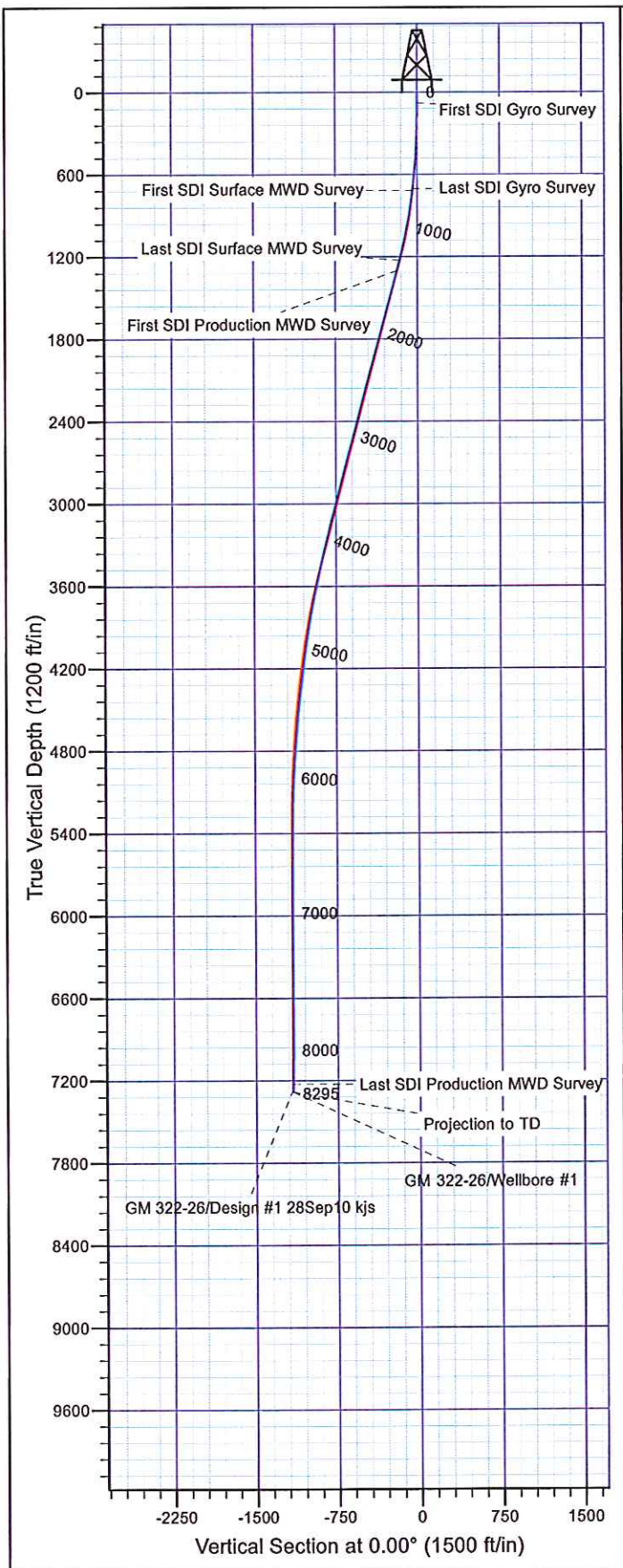




Scientific Drilling
Rocky Mountain Operations

Company: Williams Production Co.
Project: Rulison - NAD83
Site: MV 23-27 Pad
Well: GM 322-26
Wellbore: Wellbore #1
Design: Wellbore #1



Well Details: GM 322-26

TVD Reference: KELLY BUSHING @ 5794.01ft (H&P 280 (24' RKB) kjs) Level: 5770.01
+N/-S +E/-W Northing Easting Latitude Longitude Slot
0.00 0.00 1617281.90 2269879.90 39° 29' 58.802 N 108° 5' 15.806 W

REFERENCE INFORMATION

Co-ordinate (N/E) Reference: Well GM 322-26, True North
Vertical (TVD) Reference: KELLY BUSHING @ 5794.01ft (H&P 280 (24' RKB) kjs)
Section (VS) Reference: Slot - (0.00N, 0.00E)
Measured Depth Reference: KELLY BUSHING @ 5794.01ft (H&P 280 (24' RKB) kjs)
Calculation Method: Minimum Curvature

PROJECT DETAILS: Rulison - NAD83

Geodetic System: US State Plane 1983
Datum: North American Datum 1983
Ellipsoid: GRS 1980
Zone: Colorado Central Zone

System Datum: Mean Sea Level

Plan: Wellbore #1

13:29, August 31 2011
Created By: Janie Cooke