

TC 12-4D1

Schlumberger

JOB CALCULATIONS

STAGE 1

STAGE 2

Phases/Stage 1	Preflush	Spacer	Lead	Tail	Displace1	Displace2
Fluid Type	N/A	MUDPUSH II	EasyBLOCK T	15.8 G Tail	Mud	Water
# of sks			997			
Density		13.2	14.00	15.80	12.40	8.34
Yield			1.21	1.17		
Required Water		75.0%	5.48	5.09		
Volume	0.0	50.0	215		45.1	46.8

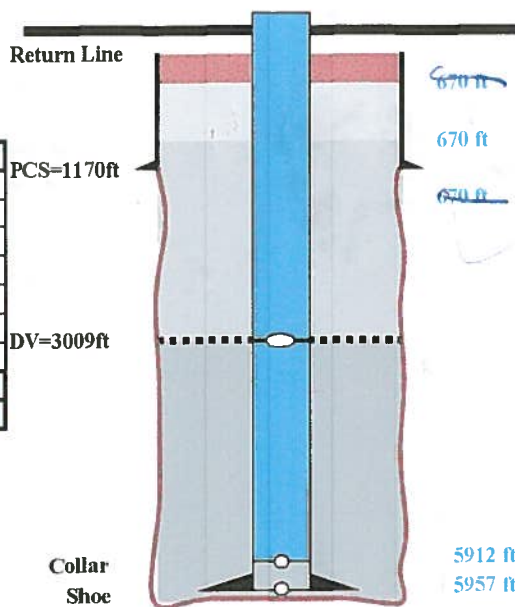
Thickening Time :

4:30

OH diameter	8 3/4	inch
Previous Casing		
OD	9 5/8	inch
Weight	36	lb/ft
ID	8.921	inch
Shoe Depth	1170	ft

Water Req.:	Stage 1	Stage 2
Preflushes:	0	0
Spacer:	0	0
Lead:	130	96
Tail:	0	0
Displacement:	47	47
Wash Up:	50	50
safety:	23	19
Total:	249 bbl	212 bbl
	462 bbl	

Top of cement : 0 ft
 1st stage TOC : 0 bbl Over DV Tool.
 Mud Weight : 12.4 ppg



Preflush	Spacer	Lead	Tail	Displace
N/A	MUDPUSH II	EasyBLOCK	15.8 G Tail	Water
		738		
	13.2	14.00	15.80	8.34
		1.21	1.17	
	75.0%	5.48	5.09	
0.0	50.0	159		46.8

sacks
ppg
cuft/sk
gal/sk
bbls

4:30

	String 1	String 2	String 3
OD	4 1/2	4 1/2	
Weight	11.6	11.6	
Grade	N-80	N-80	
ID	4	4	
Burst pressure	6350	6350	
Collapse pressure	7780	7780	
Bottom MD	5957	5957	
DV Tool Depth	3009		
Shoe joint	45		

inch
lb/ft
inch
psi
psi
ft

Casing Cap.	0.0155428	0.0155428	0.0000000
Ann. Cap. In OH	0.0547035	0.0547035	0.0743748
Ann. Cap. In casing	0.0576389	0.0576389	0.0773102
Ann. Volume 1st stage	826.65	214.155	0
Ann. Volume 2nd stage	0.00	168.037	0

bbl/ft
bbl/ft
bbl/ft
bbls
bbls

	Stage 1	Stage 2
Top of Tail:	3009	670
Top of Lead:	3009	670
Differential Pressure:	513	617
Lift Pressure:	4345	4345

ft
ft
psi
psi

	Stage 1	Stage 2
Shoe Joint Volume:	0.7	
Annular Volume:	161	168
Hole Volume:	375	215
Slurry Volume:	215	159
Slurry Excess:	53	-9
Annular Excess:	32.8	0.0

bbls
bbls without excess
bbls without excess
bbls
bbls
%

TC 12=401

Schlumberger

STAGE2 PROCEDURE

Pressure Test to: 500/5000 PSI

Stage	Volume (bbls)	Density (ppg)	Rate (bpm)	Time (min)
N/A	0	0.00	5	0
MUDPUSH II	50	13.2	5	10
14.0 EasyBLOCK TXI	159	14.00	7	23
15.8 G Tail	0	15.80	5	0
Shut Down - Wash Up - Drop Closing Plug				21
Displace with Water	46.8	8.34	6	8
				62 min

closing plug?

- Slow down in the last 10 bbls
- Bump the Plug 1000 psi over Differential (check with tool company)
- Hold Pressure for 15 min
- Bleed Off and Check DV Tool is closed

Differential Pressure: -1335 psi
Lift Pressure: 4345 psi

LEAD:	TT=	4:30
TAIL:	TT=	0:00

TC 12-451

045-20387

Schlumberger

STAGE1 PROCEDURE

Pressure Test to: 500/5000 PSI

Stage	Volume (bbls)	Density (ppg)	Rate (bpm)	Time (min)
N/A	0	0.00	5	0
MUDPUSH II	50	13.2	5	10
14.0 EasyBLOCK TX1	215	14.00	7	31
15.8 G Tail	0	15.80	5	0
Shut Down - Wash Up - Drop Wiper Plug				20
Displace with Water	45.1	8.34	6	8
Displace with Water	46.8	8.34	7	7
Slow down for 20 bbls at 37 bbl				76 min

Slow down in the last 10 bbls

DO NOT DISPLACE OVER:

92.2 bbl

Bump the Plug 500 psi over Differential

Check Float

Drop Bomb and Wait :

16 min

Pressure Up on Bomb until pressure drops and start getting returns to surface

Circulate out Excess Slurry with Mud for :

4 Hours

Differential Pressure: 1485

psi ✓

Lift Pressure: 4345

psi ✓

NOT used
Hydraulic DV
instead

9 PM 3/2/12

LEAD:

TT= 4:30

TAIL :

TT= 0:00