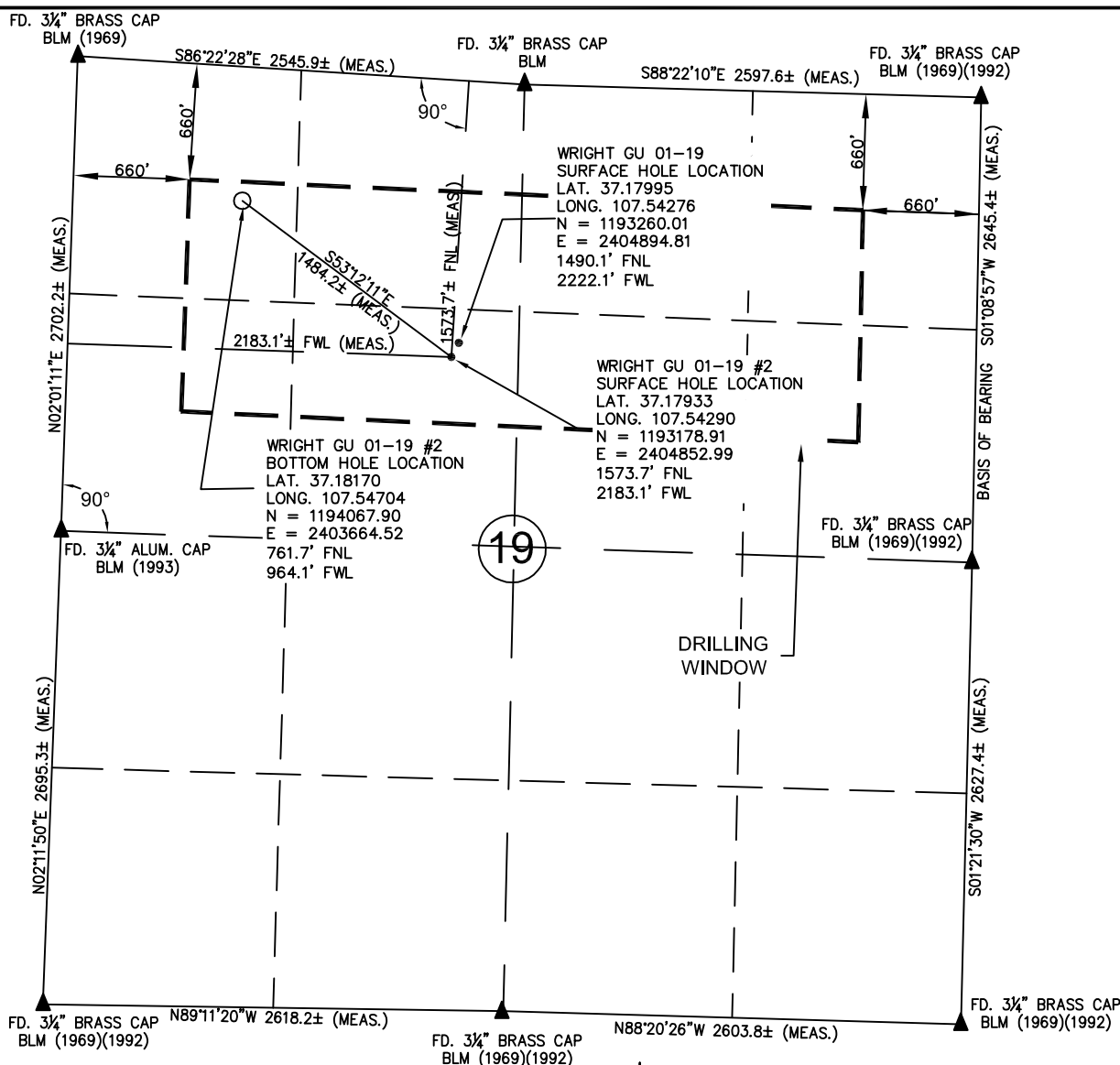


Drawing: WRIGHT GU 01-19 MULTI-WELL.DWG Plotted by: DALLAS_KNOLL Date: 02/02/2012 09:11:22 AM R:\Project Files\BP\BP 80 Acre Infill\Wright GU 01-19 #2\Permitting Drawings\



OPERATOR: BP AMERICA PRODUCTION COMPANY
LEASE: WRIGHT GU 01-19 #2
SECTION 19 TOWNSHIP 34 NORTH RANGE 06 N.M.P.M.
COUNTY: LA PLATA COUNTY, COLORADO

WRIGHT GU 01-19 GU #2 1573.7 FEET FROM THE NORTH LINE, AND
2183.1 FEET FROM THE WEST LINE
BOTTOM HOLE LOCATION: 761.7 FEET FROM THE NORTH LINE, AND
964.1 FEET FROM THE WEST LINE
GROUND LEVEL ELEVATION: 6886.5'

WRIGHT GU 01-19 1490.1 FEET FROM THE NORTH LINE, AND
2222.1 FEET FROM THE WEST LINE
BOTTOM HOLE LOCATION: 761.7 FEET FROM THE NORTH LINE, AND
964.1 FEET FROM THE WEST LINE
GROUND LEVEL ELEVATION: 6887.0'

LEGEND:

- = PROPOSED WELL HEAD
- = BOTTOM HOLE LOCATION
- ▲ = SECTION CORNERS LOCATED
- △ = SECTION CORNERS NOT FOUND OR SET THIS SURVEY (CALCULATED LOCATION).
- S.U.I.T. = SOUTHERN UTE INDIAN TRIBE
- BLM = BUREAU OF LAND MANAGEMENT

SCALE 1" = 1000'
0 500 1000

NOTES:

- 1) BASIS OF BEARING: SPC, C-SO, NAD83 ALONG EAST LINE OF THE NE1/4 OF SAID SECTION 19. BEARS: S01° 08' 57"W. NE SECTION CORNER IS A FOUND 3/4" BC BLM (1969)(1992) AND THE E 1/4 CORNER IS A FOUND 3/4" BC BLM (1969)(1992).
- 2) DATE FIELD SURVEY: 8/15/2011.
- 3) ELEVATION DETERMINED FROM NAVD 1988 DATUM, AND DETERMINED USING GPS OBSERVATIONS.
- 4) INSTRUMENT OPERATOR: BILL MITCHELL.
- 5) PDOP VALUE: 2.0.
- 6) ALL DIMENSIONS SHOWN HEREON ARE AT SPC, CO-S, NAD 83, GRID.

PROJ. NO.	FILE NO.	WRIGHT GU 01-19 #2		REV
49228572	WRIGHTGU01192.CSV	MULTI - WELL PLAN		A
DRAWN BY	DATE	CLIENT		
DK	1/30/12	PC	BP AMERICA PROD. CO. - DURANGO, CO	