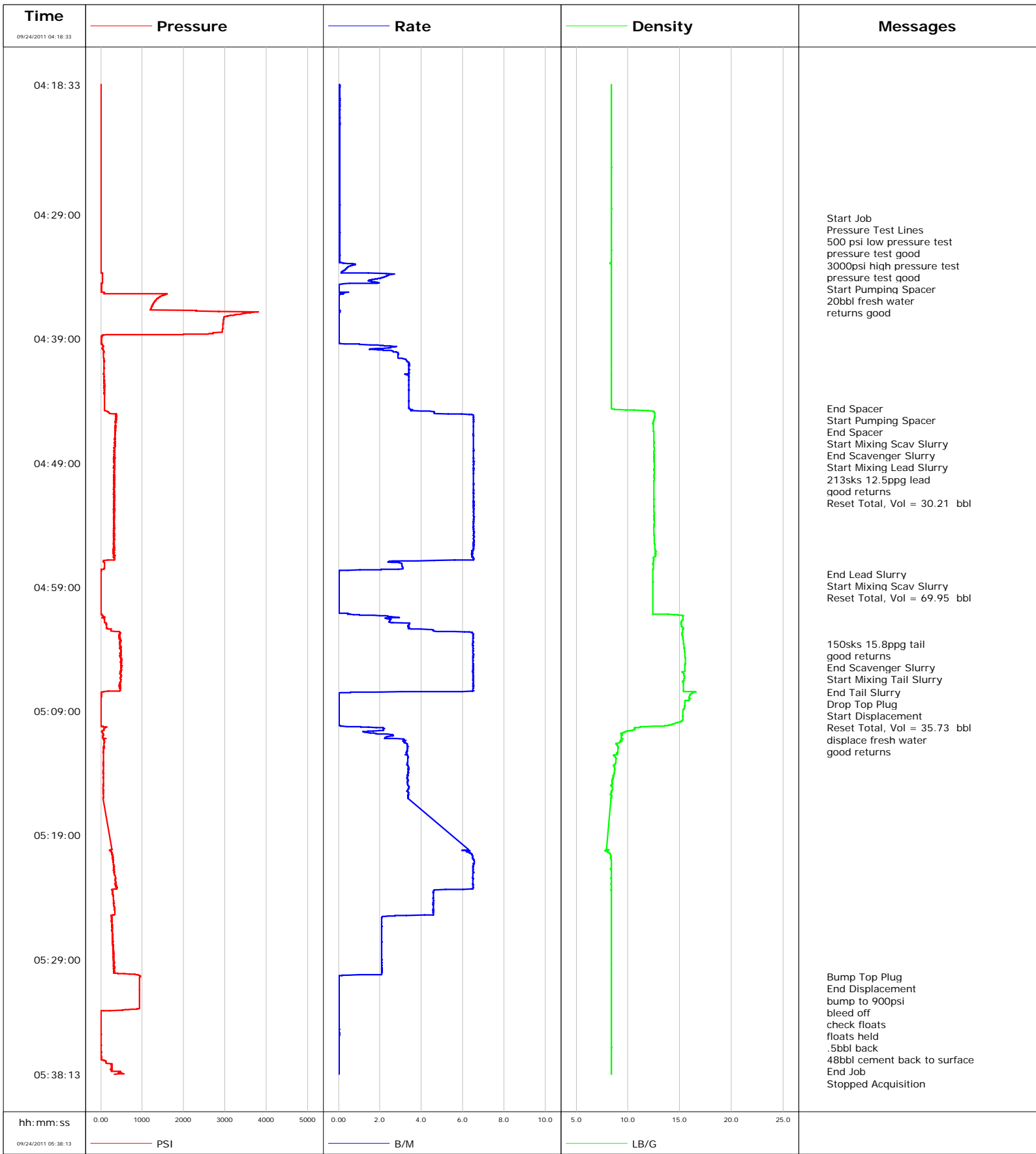


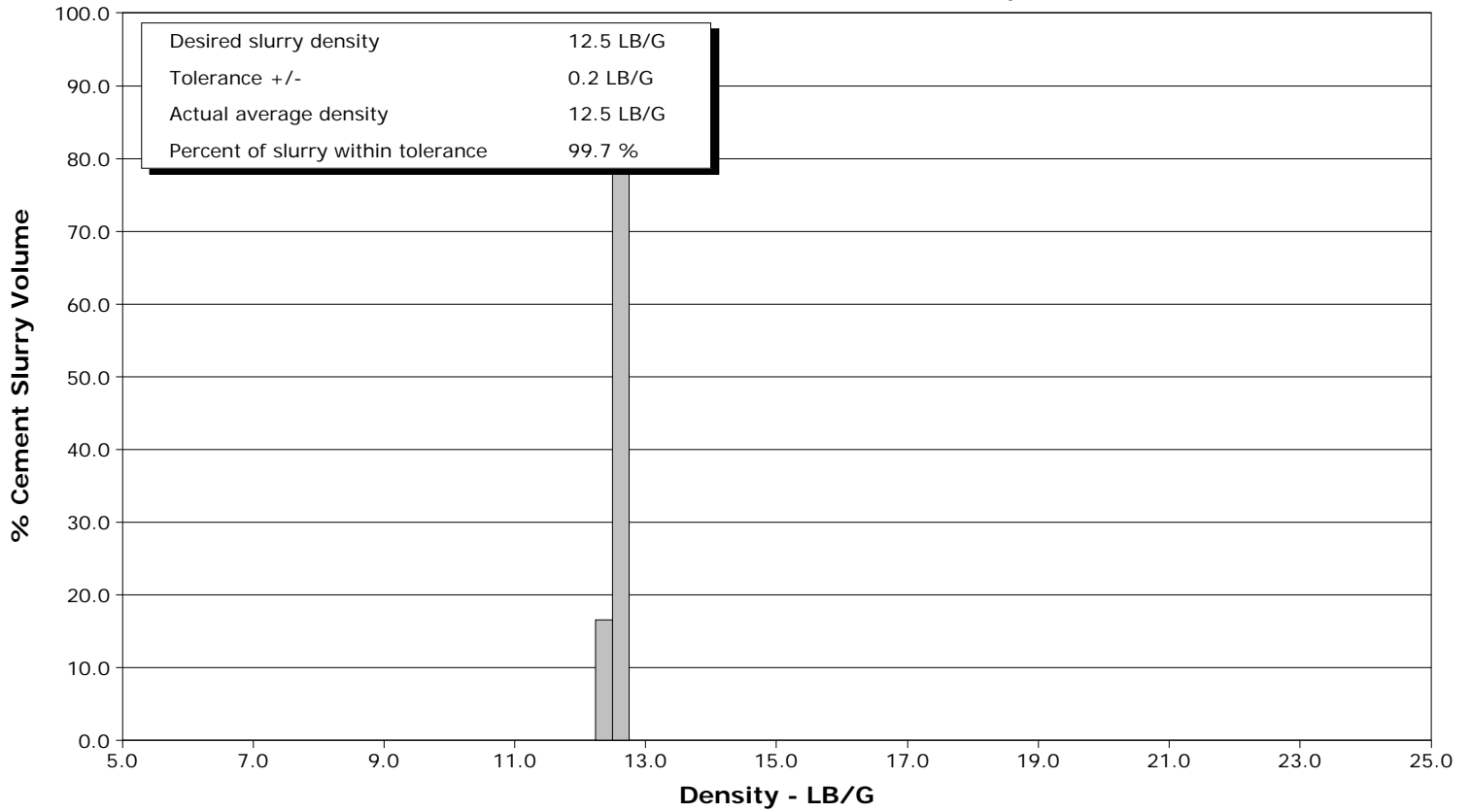
Well	FEDERAL 29-4BB	Client	ENCANA
Field	S. PARACHUTE	SIR No.	BUNM-00191
Engineer	Jeff Patterson	Job Type	9 5/8" SURFACE
Country	United States	Job Date	09-24-2011



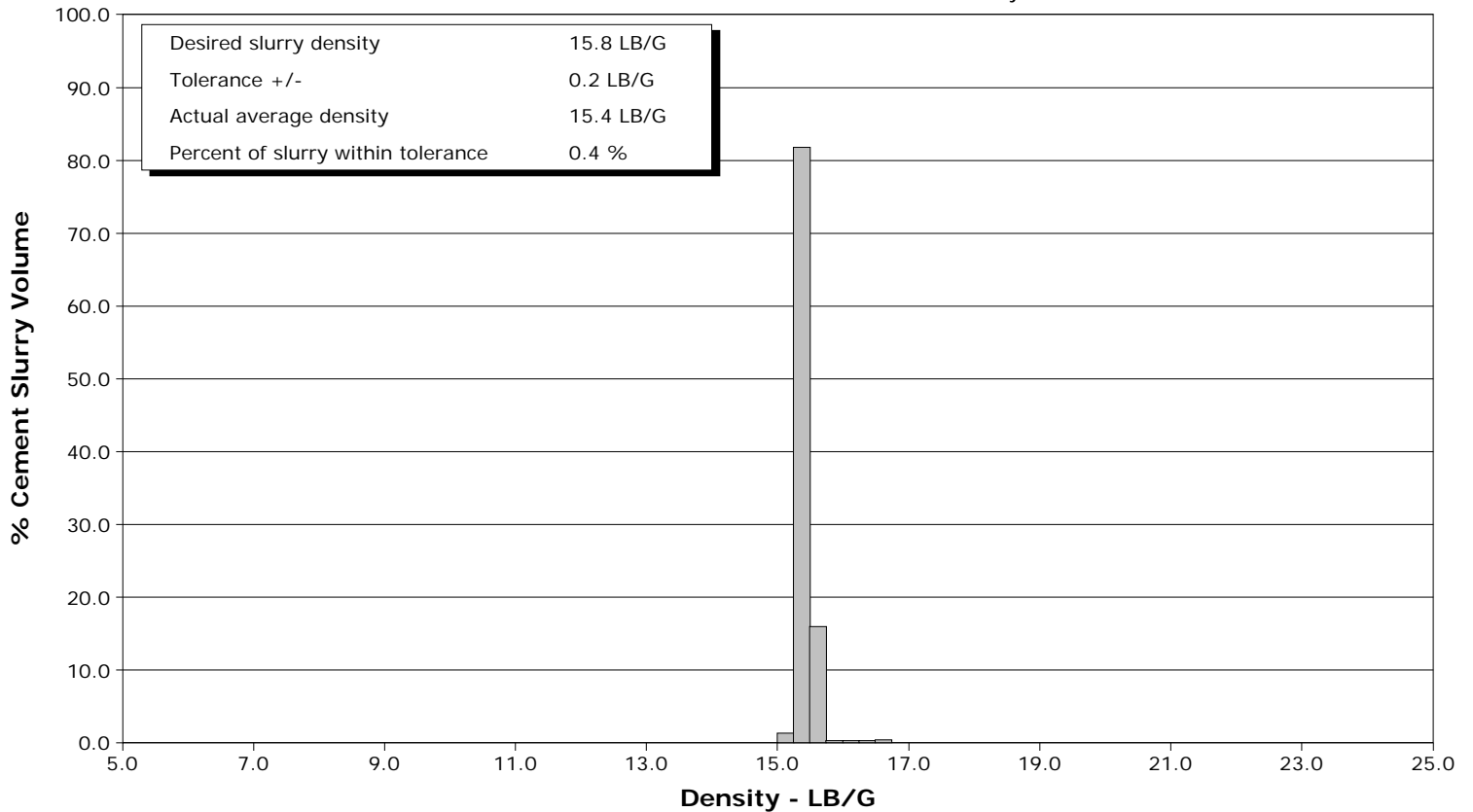
Well FEDERAL 29-4BB
Field S. PARACHUTE
Engineer Jeff Patterson
Country United States

Client ENCANA
SIR No. BUNM-00191
Job Type 9 5/8" SURFACE
Job Date 09-24-2011

Lead Slurry - 09/24/2011 04:45:30 to 09/24/2011 04:57:57



Tail Slurry - 09/24/2011 05:05:31 to 09/24/2011 05:07:28



Well		Field		Job Start		Customer		Job Number	
FEDERAL 29-4BB FEDERAL 29-4BB		S. PARACHUTE		Sep/24/2011		ENCANA		BUNM-00191	
Date	Time 24-hr clock	Treating Pressure PSI	Flow Rate B/M	Density LB/G	Volume BBL	Message			
09/24/2011	04:28:38	-5	0.0	8.40	0.4				
09/24/2011	04:29:08	-5	0.0	8.40	0.5				
09/24/2011	04:29:18					Start Job			
09/24/2011	04:29:18	-5	0.0	8.40	0.5				
09/24/2011	04:29:20					Pressure Test Lines			
09/24/2011	04:29:20	-5	0.0	8.40	0.5				
09/24/2011	04:29:21					500 psi low pressure test			
09/24/2011	04:29:21					pressure test good			
09/24/2011	04:29:21	-5	0.1	8.40	0.5				
09/24/2011	04:29:22					3000psi high pressure test			
09/24/2011	04:29:22					pressure test good			
09/24/2011	04:29:22	-5	0.0	8.40	0.5				
09/24/2011	04:29:23					Start Pumping Spacer			
09/24/2011	04:29:23	-5	0.0	8.40	0.5				
09/24/2011	04:29:25					20bbl fresh water			
09/24/2011	04:29:25					returns good			
09/24/2011	04:29:25	-5	0.0	8.40	0.5				
09/24/2011	04:29:38	-5	0.0	8.40	0.5				
09/24/2011	04:30:08	-5	0.0	8.40	0.5				
09/24/2011	04:30:38	-5	0.0	8.40	0.5				
09/24/2011	04:31:08	-8	0.0	8.40	0.6				
09/24/2011	04:31:38	-9	0.0	8.40	0.6				
09/24/2011	04:32:08	-9	0.0	8.40	0.6				
09/24/2011	04:32:38	-8	0.0	8.40	0.6				
09/24/2011	04:33:08	-6	0.7	8.40	0.8				
09/24/2011	04:33:38	-5	0.2	8.40	1.0				
09/24/2011	04:34:08	44	2.0	8.40	1.9				
09/24/2011	04:34:38	9	0.1	8.40	2.6				
09/24/2011	04:35:08	7	0.0	8.40	2.6				
09/24/2011	04:35:38	1429	0.0	8.40	2.7				
09/24/2011	04:36:08	1282	0.0	8.40	2.7				
09/24/2011	04:36:38	1206	0.0	8.40	2.7				
09/24/2011	04:37:08	3199	0.0	8.40	2.7				
09/24/2011	04:37:38	2958	0.0	8.40	2.7				
09/24/2011	04:38:08	2943	0.0	8.40	2.7				
09/24/2011	04:38:38	2614	0.0	8.40	2.7				
09/24/2011	04:39:08	8	0.0	8.40	2.7				
09/24/2011	04:39:38	61	2.7	8.40	3.1				
09/24/2011	04:40:08	71	2.8	8.40	4.3				
09/24/2011	04:40:38	76	3.1	8.40	5.7				
09/24/2011	04:41:08	81	3.4	8.40	7.4				
09/24/2011	04:41:38	82	3.4	8.40	9.1				
09/24/2011	04:42:08	83	3.4	8.40	10.8				
09/24/2011	04:42:38	84	3.4	8.40	12.5				
09/24/2011	04:43:08	86	3.4	8.40	14.2				
09/24/2011	04:43:38	84	3.4	8.40	15.9				
09/24/2011	04:44:08	85	3.4	8.40	17.6				
09/24/2011	04:44:37					End Spacer			
09/24/2011	04:44:37	88	3.4	8.40	19.2				
09/24/2011	04:44:38					Start Pumping Spacer			
09/24/2011	04:44:38	91	3.4	8.40	19.3				
09/24/2011	04:44:41					End Spacer			
09/24/2011	04:44:41	89	3.4	8.52	19.4				
09/24/2011	04:44:54					Start Mixing Scav Slurry			

Well FEDERAL 29-4BB FEDERAL 29-4BB			Field S. PARACHUTE		Job Start Sep/24/2011	Customer ENCANA	Job Number BUNM-00191
Date	Time 24-hr clock	Treating Pressure PSI	Flow Rate B/M	Density LB/G	Volume BBL	Message	
09/24/2011	04:45:08	374	6.5	12.61	21.4		
09/24/2011	04:45:29					End Scavenger Slurry	
09/24/2011	04:45:29	373	6.5	12.53	23.7		
09/24/2011	04:45:30					Start Mixing Lead Slurry	
09/24/2011	04:45:30	354	6.5	12.53	23.8		
09/24/2011	04:45:33					213sks 12.5ppg lead	
09/24/2011	04:45:33					good returns	
09/24/2011	04:45:33	371	6.5	12.52	24.1		
09/24/2011	04:45:38	374	6.5	12.48	24.7		
09/24/2011	04:46:08	341	6.5	12.44	27.9		
09/24/2011	04:46:29					Reset Total, Vol = 30.21 bbl	
09/24/2011	04:46:29	357	6.5	12.48	30.2		
09/24/2011	04:46:38	349	6.5	12.49	31.2		
09/24/2011	04:47:08	340	6.5	12.52	34.4		
09/24/2011	04:47:38	339	6.5	12.52	37.7		
09/24/2011	04:48:08	331	6.5	12.52	41.0		
09/24/2011	04:48:38	328	6.5	12.52	44.2		
09/24/2011	04:49:08	336	6.5	12.53	47.5		
09/24/2011	04:49:38	314	6.5	12.52	50.7		
09/24/2011	04:50:08	312	6.5	12.52	54.0		
09/24/2011	04:50:38	322	6.5	12.52	57.3		
09/24/2011	04:51:08	321	6.5	12.52	60.5		
09/24/2011	04:51:38	326	6.5	12.51	63.8		
09/24/2011	04:52:08	326	6.5	12.52	67.0		
09/24/2011	04:52:38	323	6.5	12.52	70.3		
09/24/2011	04:53:08	318	6.5	12.52	73.6		
09/24/2011	04:53:38	322	6.5	12.53	76.8		
09/24/2011	04:54:08	320	6.5	12.53	80.1		
09/24/2011	04:54:38	318	6.5	12.51	83.4		
09/24/2011	04:55:08	328	6.5	12.54	86.6		
09/24/2011	04:55:38	328	6.5	12.59	89.9		
09/24/2011	04:56:08	320	6.5	12.63	93.1		
09/24/2011	04:56:38	333	6.5	12.46	96.4		
09/24/2011	04:57:08	89	3.1	12.42	98.7		
09/24/2011	04:57:38	-9	1.0	12.41	100.1		
09/24/2011	04:57:57					End Lead Slurry	
09/24/2011	04:57:57	-4	0.0	12.40	100.2		
09/24/2011	04:57:58					Start Mixing Scav Slurry	
09/24/2011	04:57:58	-3	0.0	12.40	100.2		
09/24/2011	04:58:08	-5	0.0	12.40	100.2		
09/24/2011	04:58:38	-7	0.0	12.39	100.2		
09/24/2011	04:59:08	-7	0.0	12.40	100.2		
09/24/2011	04:59:23					Reset Total, Vol = 69.95 bbl	
09/24/2011	04:59:23	-7	0.0	12.40	100.2		
09/24/2011	04:59:38	-7	0.0	12.40	100.2		
09/24/2011	05:00:08	-7	0.0	12.41	100.2		
09/24/2011	05:00:38	-5	0.0	12.41	100.2		
09/24/2011	05:01:08	6	0.4	12.41	100.2		
09/24/2011	05:01:38	87	2.5	15.30	101.1		
09/24/2011	05:02:08	135	3.4	15.17	102.6		
09/24/2011	05:02:38	464	6.1	15.25	104.6		
09/24/2011	05:03:08	455	6.5	15.30	107.8		
09/24/2011	05:03:35					150sks 15.8ppg tail	
09/24/2011	05:03:35					good returns	

Well		Field		Job Start		Customer		Job Number	
FEDERAL 29-4BB FEDERAL 29-4BB		S. PARACHUTE		Sep/24/2011		ENCANA		BUNM-00191	
Date	Time 24-hr clock	Treating Pressure PSI	Flow Rate B/M	Density LB/G	Volume BBL	Message			
09/24/2011	05:03:38	463	6.5	15.38	111.1				
09/24/2011	05:04:08	492	6.5	15.45	114.3				
09/24/2011	05:04:38	469	6.5	15.52	117.6				
09/24/2011	05:05:08	478	6.5	15.53	120.8				
09/24/2011	05:05:30					End Scavenger Slurry			
09/24/2011	05:05:30	502	6.5	15.51	123.2				
09/24/2011	05:05:31					Start Mixing Tail Slurry			
09/24/2011	05:05:31	482	6.5	15.52	123.3				
09/24/2011	05:05:38	489	6.5	15.51	124.1				
09/24/2011	05:06:08	488	6.5	15.42	127.3				
09/24/2011	05:06:38	468	6.5	15.31	130.6				
09/24/2011	05:07:08	460	6.5	15.35	133.8				
09/24/2011	05:07:28					End Tail Slurry			
09/24/2011	05:07:28	14	1.8	16.53	135.9				
09/24/2011	05:07:30					Drop Top Plug			
09/24/2011	05:07:30	-2	0.6	16.33	135.9				
09/24/2011	05:07:32					Start Displacement			
09/24/2011	05:07:32					Reset Total, Vol = 35.73 bbl			
09/24/2011	05:07:32	0	0.0	16.20	135.9				
09/24/2011	05:07:33					displace fresh water			
09/24/2011	05:07:33					good returns			
09/24/2011	05:07:33	2	0.0	16.16	135.9				
09/24/2011	05:07:38	2	0.0	16.04	135.9				
09/24/2011	05:08:08	-1	0.0	15.87	135.9				
09/24/2011	05:08:38	-3	0.0	15.47	135.9				
09/24/2011	05:09:08	-3	0.0	15.31	135.9				
09/24/2011	05:09:38	-3	0.0	15.29	135.9				
09/24/2011	05:10:08	-2	0.0	14.02	135.9				
09/24/2011	05:10:38	18	1.4	9.89	136.6				
09/24/2011	05:11:08	45	2.2	9.35	137.7				
09/24/2011	05:11:38	76	3.3	8.83	139.2				
09/24/2011	05:12:08	64	3.3	9.02	140.9				
09/24/2011	05:12:38	68	3.3	8.73	142.5				
09/24/2011	05:13:08	68	3.3	8.81	144.2				
09/24/2011	05:13:38	68	3.4	8.73	145.9				
09/24/2011	05:14:08	62	3.3	8.65	147.5				
09/24/2011	05:14:38	63	3.3	8.48	149.2				
09/24/2011	05:15:08	58	3.4	8.48	150.9				
09/24/2011	05:15:38	58	3.4	8.42	152.6				
09/24/2011	05:20:08	270	6.3	7.92	153.9				
09/24/2011	05:20:38	289	6.5	8.33	157.1				
09/24/2011	05:21:08	306	6.6	8.40	160.3				
09/24/2011	05:21:38	318	6.5	8.40	163.6				
09/24/2011	05:22:08	329	6.5	8.40	166.8				
09/24/2011	05:22:38	354	6.5	8.40	170.1				
09/24/2011	05:23:08	369	6.5	8.40	173.3				
09/24/2011	05:23:38	280	4.6	8.40	176.0				
09/24/2011	05:24:08	304	4.6	8.40	178.3				
09/24/2011	05:24:38	317	4.6	8.40	180.6				
09/24/2011	05:25:08	343	4.6	8.40	182.9				
09/24/2011	05:25:38	265	2.1	8.40	184.8				
09/24/2011	05:26:08	266	2.1	8.40	185.8				
09/24/2011	05:26:38	273	2.1	8.40	186.8				
09/24/2011	05:27:08	282	2.1	8.40	187.9				

Well		Field		Job Start		Customer		Job Number	
FEDERAL 29-4BB FEDERAL 29-4BB		S. PARACHUTE		Sep/24/2011		ENCANA		BUNM-00191	
Date	Time 24-hr clock	Treating Pressure PSI	Flow Rate B/M	Density LB/G	Volume BBL	Message			
09/24/2011	05:28:08	296	2.1	8.40	190.0				
09/24/2011	05:28:38	309	2.1	8.40	191.0				
09/24/2011	05:29:08	315	2.1	8.40	192.1				
09/24/2011	05:29:38	312	2.1	8.40	193.1				
09/24/2011	05:30:08	413	2.1	8.40	194.2				
09/24/2011	05:30:22					Bump Top Plug			
09/24/2011	05:30:22	948	0.0	8.41	194.4				
09/24/2011	05:30:23					End Displacement			
09/24/2011	05:30:23	943	0.0	8.40	194.4				
09/24/2011	05:30:25					bump to 900psi			
09/24/2011	05:30:25					bleed off			
09/24/2011	05:30:25	939	0.0	8.40	194.4				
09/24/2011	05:30:26					check floats			
09/24/2011	05:30:26					floats held			
09/24/2011	05:30:26					.5bbl back			
09/24/2011	05:30:26					48bbl cement back to surface			
09/24/2011	05:30:26	937	0.0	8.40	194.4				
09/24/2011	05:30:38	936	0.0	8.41	194.4				
09/24/2011	05:31:08	933	0.0	8.40	194.4				
09/24/2011	05:31:38	934	0.0	8.40	194.4				
09/24/2011	05:32:08	935	0.0	8.40	194.4				
09/24/2011	05:32:38	936	0.0	8.40	194.4				
09/24/2011	05:33:08	7	0.0	8.40	194.4				
09/24/2011	05:33:38	-1	0.0	8.41	194.4				
09/24/2011	05:34:08	-0	0.0	8.41	194.4				
09/24/2011	05:34:38	-1	0.0	8.41	194.4				
09/24/2011	05:35:08	-1	0.0	8.41	194.5				
09/24/2011	05:35:38	-1	0.0	8.40	194.5				
09/24/2011	05:36:08	-1	0.0	8.41	194.5				
09/24/2011	05:36:38	-1	0.0	8.40	194.5				
09/24/2011	05:37:08	97	0.0	8.41	194.5				
09/24/2011	05:37:38	267	0.0	8.40	194.5				
09/24/2011	05:38:08	420	0.0	8.41	194.5				
09/24/2011	05:43:02					End Job			

Post Job Summary

Average Pump Rates, bbl/min				Volume of Fluid Injected, bbl			
Slurry	N2	Mud	Maximum Rate	Total Slurry	Mud	Spacer	N2
6.0			8.0	111.0		20.0	
Treating Pressure Summary, psi				Breakdown Fluid			
Maximum	Final	Average	Bump Plug to	Breakdown	Type	Volume	Density
3000	900	200	900				
Avg. N2 Percent	Designed Slurry Volume		Displacement	Mix Water Temp	Cement Circulated to Surface?	Volume	
	111.0 bbl		80.0 bbl	65 degF	<input checked="" type="checkbox"/>	48.0 bbl	
					Washed Thru Perfs	To	
					<input type="checkbox"/>		
Customer or Authorized Representative			Schlumberger Supervisor			Circulation Lost	Job Completed
VLAD, KOCHETOV			Jeff Patterson			<input type="checkbox"/>	<input checked="" type="checkbox"/>
						-	-