

CONFIDENTIALITY NOTES:

The information contained in this plat is legally privileged and confidential information intended only for the use of the recipients. If you are not the intended recipients, you are hereby notified that any use, dissemination, distribution or copying of this information is strictly prohibited.



**WILLIAM H. SMITH
& ASSOCIATES P.C.**

SURVEYING CONSULTANTS
550 EAST SECOND NORTH PHONE: 307-875-3638
GREEN RIVER, WY 307-875-3639
www.whsmithpc.com

DRAWN BY: BW

CHECKED BY: RAW

PROJECT NO: 86482H

JOB NO: 2011001

REVISIONS:

LEGEND

400' PERIMETER ———
PROPOSED ACCESS ———
EXISTING 2-TRACK ———
SECTION LINE ———
1/16TH LINE ———

LOCATION:

OWL CREEK
8-64-8-2H
WITHIN THE NE/4
NW/4 SECTION 8,
T 8 N, R 64 W,
6TH PM.
WELD COUNTY,
COLORADO

MARATHON OIL COMPANY
PO BOX 3128, HOUSTON TX, 77253
5555 SAN FELIPE, HOUSTON TX, 77056

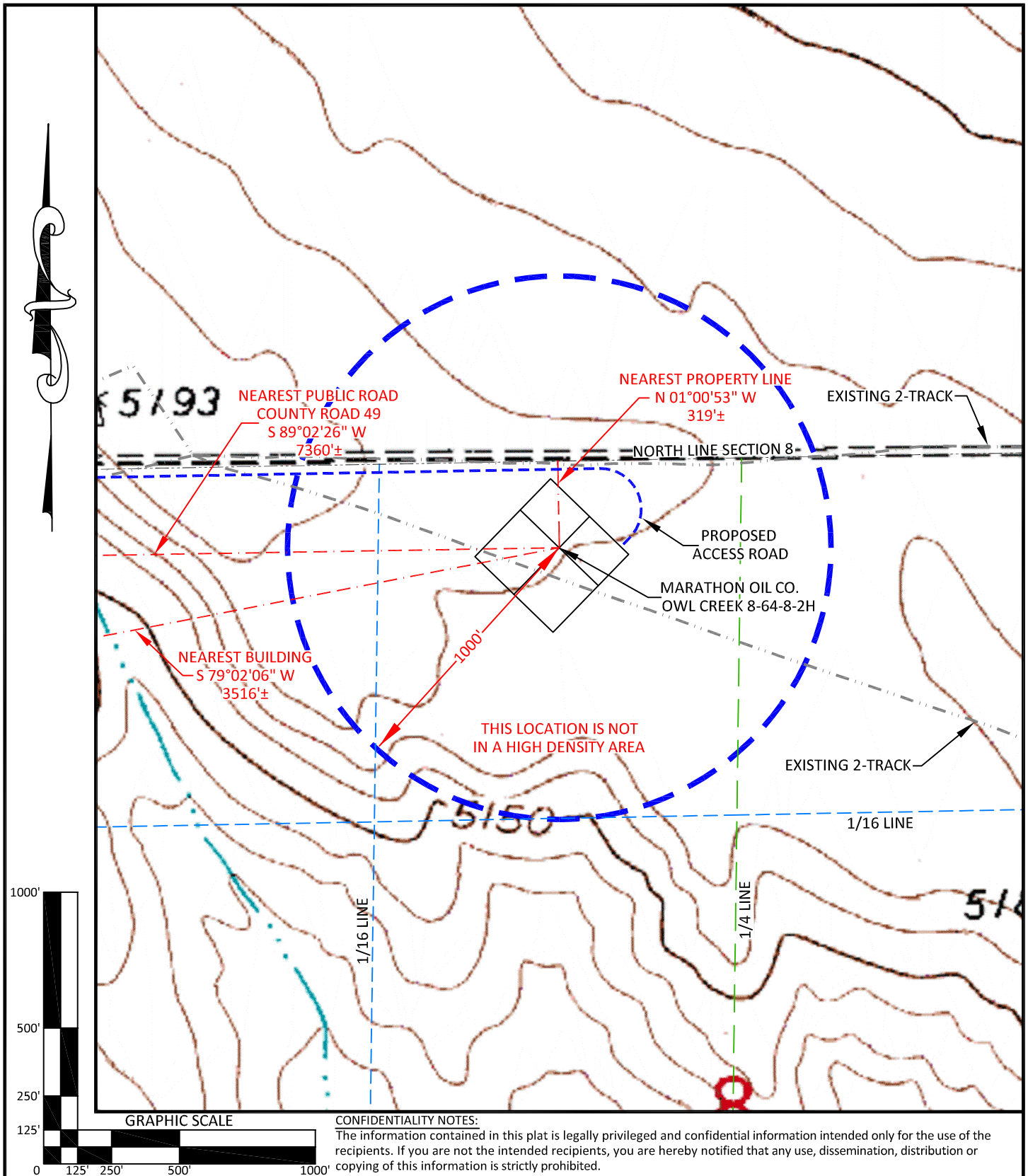
LOCATION DRAWING

SCALE: 1"=200'

EXHIBIT "C"

DATE: 2/21/2012

SHEET 2 OF 14



**WILLIAM H. SMITH
& ASSOCIATES P.C.**

SURVEYING CONSULTANTS
550 EAST SECOND NORTH PHONE: 307-875-3638
GREEN RIVER, WY 307-875-3639
www.whsmithpc.com

DRAWN BY: BW **CHECKED BY:** RAW
PROJECT NO: 86482H **JOB NO:** 2011001
REVISIONS: 2/23/2012 CORRECT DIST TO PUBLIC ROAD

LEGEND

1000' RADIUS
PROPOSED ACCESS
EXISTING 2-TRACK
1/16 LINE
1/4 LINE
SECTION LINE

LOCATION:

OWL CREEK
8-64-8-2H
WITHIN THE NE/4
NW/4 SECTION 8,
T 8 N, R 64 W,
6TH PM.
WELD COUNTY,
COLORADO

MARATHON OIL COMPANY
PO BOX 3128, HOUSTON TX, 77253
5555 SAN FELIPE, HOUSTON TX, 77056

CULTURE MAP

SCALE: 1"=500'
DATE: 2/21/2012 **EXHIBIT "H"**
SHEET 7 OF 14