

**WILLIAM H. SMITH
 & ASSOCIATES P.C.**
 SURVEYING CONSULTANTS
 550 EAST SECOND NORTH PHONE: 307-875-3638
 GREEN RIVER, WY 307-875-3639
 www.whsmithpc.com

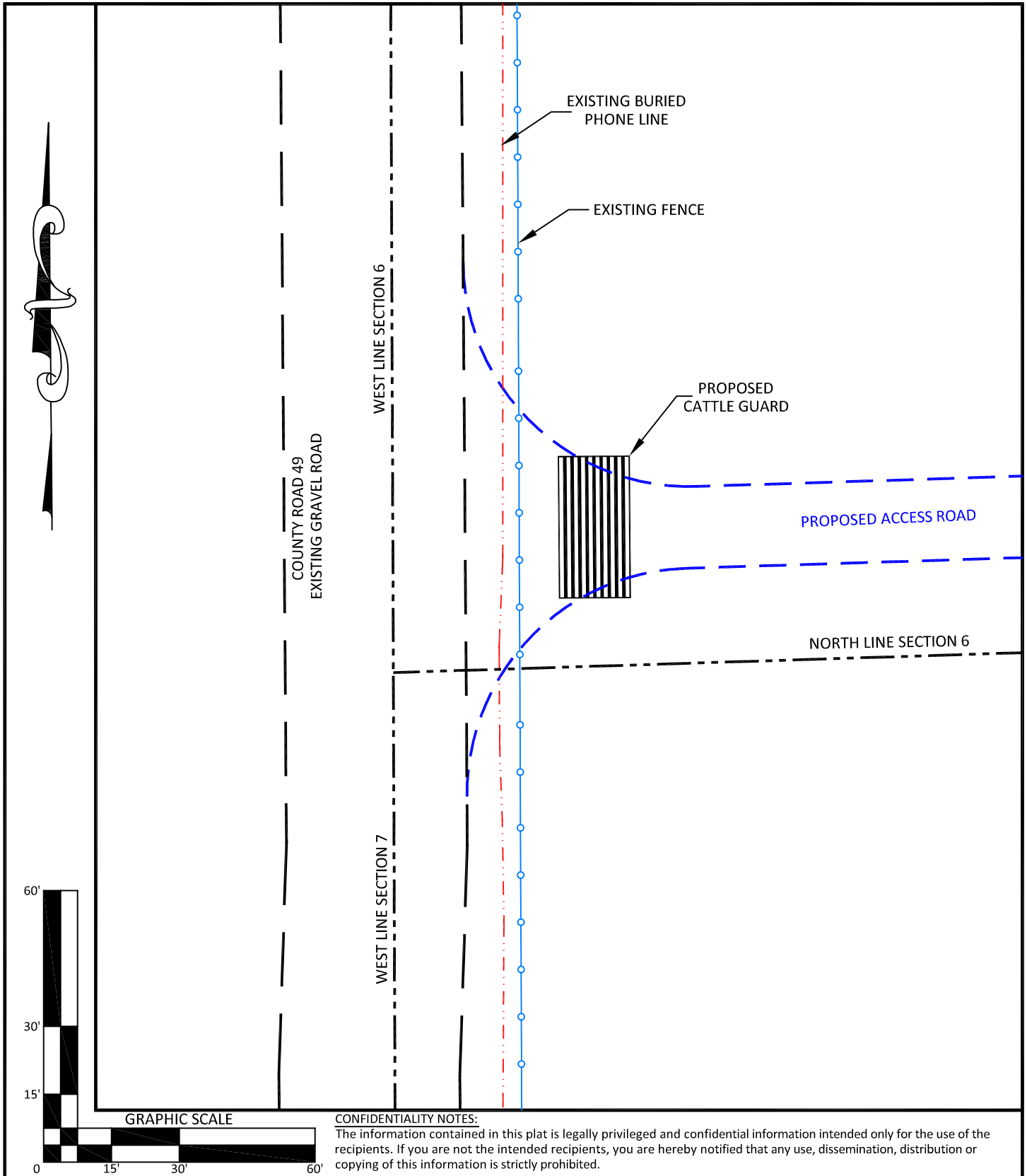
DRAWN BY: BW
 PROJECT NO: 86482H
 REVISIONS:
 CHECKED BY: RAW
 JOB NO: 2011001

LEGEND	
PROPOSED ACCESS	
EXISTING 2-TRACK	
EXISTING ROAD	
1/16 LINE	
1/4 LINE	
SECTION LINE	
FENCE	

LOCATION:
 OWL CREEK
 8-64-8-2H
 WITHIN THE NE/4
 NW/4 SECTION 8,
 T 8 N, R 64 W,
 6TH PM.
 WELD COUNTY,
 COLORADO

MARATHON OIL COMPANY
 PO BOX 3128, HOUSTON TX, 77253
 5555 SAN FELIPE, HOUSTON TX, 77056

ACCESS ROAD MAP
 SCALE: 1"=1500'
 DATE: 2/21/2012
 EXHIBIT "E"
 SHEET 4 OF 14



CONFIDENTIALITY NOTES:
The information contained in this plat is legally privileged and confidential information intended only for the use of the recipients. If you are not the intended recipients, you are hereby notified that any use, dissemination, distribution or copying of this information is strictly prohibited.



**WILLIAM H. SMITH
& ASSOCIATES P.C.**
SURVEYING CONSULTANTS
550 EAST SECOND NORTH PHONE: 307-875-3638
GREEN RIVER, WY 307-875-3639
www.whsmithpc.com

DRAWN BY: BW	CHECKED BY: RAW
PROJECT NO: 86482H	JOB NO: 2011001
REVISIONS:	

LEGEND	
ACCESS ROAD	
EXISTING ROAD	
EXISTING FENCE	
SECTION LINE	

LOCATION:

OWL CREEK
8-64-8-2H
WITHIN THE NE/4
NW/4 SECTION 8,
T 8 N, R 64 W,
6TH PM.
WELD COUNTY,
COLORADO

MARATHON OIL COMPANY
PO BOX 3128, HOUSTON TX, 77253
5555 SAN FELIPE, HOUSTON TX, 77056

ACCESS ROAD ENTRANCE

SCALE: 1"=30'	EXHIBIT "A"
DATE: 2/21/2012	SHEET 1 OF 1