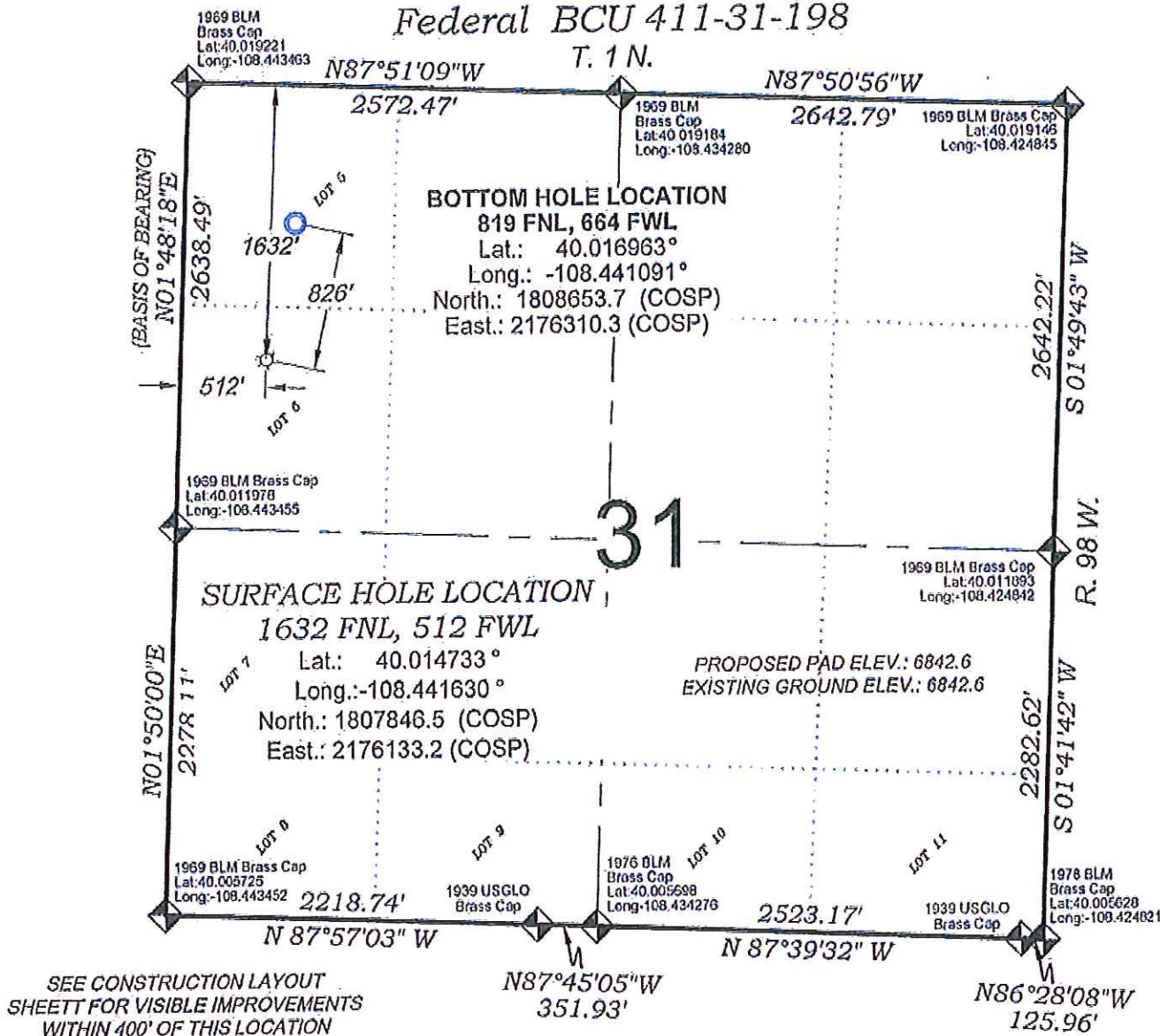


Federal BCU 411-31-198



SEE CONSTRUCTION LAYOUT SHEET FOR VISIBLE IMPROVEMENTS WITHIN 400' OF THIS LOCATION



SURVEYOR'S STATEMENT

I, MICHAEL J. LANGHORNE, A REGISTERED LAND SURVEYOR IN THE STATE OF COLORADO DO HEREBY CERTIFY THAT THE SURVEY SHOWN HEREON WAS PREPARED UNDER MY DIRECT SUPERVISION AND HAS BEEN STAKED ON THE GROUND AS SHOWN ON THE PLAT AND CHECKING THAT THIS MAP IS A TRUE REPRESENTATION THEREOF.

MICHAEL J. LANGHORNE, COLORADO REGISTRATION NO. 36572
FOR AND ON BEHALF OF
BOOKCLIFF SURVEY SERVICES, INC.

REFERENCES

- 1) DEPENDENT RESURVEY & SURVEY T. 1 N., R. 98 W., 6th P.M. (GLO PLAT)
- 2) U.S.G.S. QUAD: Barcus Creek, CO

REVISED: 1/9/12

SCALE: 1" = 100'
DATE: 12/20/11
PLAT: 1 of 7
PROJECT: Williams Highland
DPT: cws

- LEGEND -

FIELD LOCATED SECTION MONUMENTS AS DESCRIBED

FIELD SURVEYED WELL LOCATION

CALCULATED BOTTOM HOLE LOCATION

CALCULATED SECTION CORNER LOCATION

NOTES

- 1) ELEVATIONS BASED ON N.A.V.D. 1988 PUBLISHED COORDINATES.
- 2) LATITUDES AND LONGITUDES ARE BASED ON NAD 83, PUBLISHED COORDINATES.
- 3) STATE PLANE COORDINATES ARE BASED ON COLORADO CENTRAL ZONE, U.S. SURVEY FEET.
- 4) ELEVATION MASK SET TO 15"
- 5) GPS OPERATOR J. KIRKPATRICK, OBSERVED A PDOP OF 5.6 FOR SURVEY POINT NUMBER 41339.
- 6) SURFACE AND BOTTOM HOLE LOCATIONS ARE MEASURED 90° FROM SECTION LINES.

Construction Plan Prepared for:
WPXENERGY
WPX Energy Rocky Mountain, LLC

SW1/4 NW1/4, SECTION 31
T. 1 N., R. 98 W. of the 6th. P.M.
BLA BLANCO COUNTY, COLORADO

136 East Third Street
Rifle, Colorado 81650
Ph. (970) 625-2720
Fax (970) 625-2773

