

Erin Bibeau

Regulatory Compliance Representative
DJ Basin

4557 Denrose Ct.
Ft. Collins, CO 80524
Telephone 970.419.7816 Mobile 970.219.8703
Fax 970.493.9219
ebibeau@marathonoil.com



February 28, 2012

David Bauer
Weld County
1111 H Street
Greeley, CO 80632

Re: 30 Day Notice Requirement (Rule 305)
Advance Notice of Drilling Operations

Owl Creek 8-64-8-2H Well
NENW Section 8, Township 8N, Range 64W
319' FNL and 2000' FWL
Weld County, Colorado

Dear Mr. Bauer:

Marathon Oil Company ("Marathon") is filing an Application for Permit to Drill with the Colorado Oil and Gas Conservation Commission for the above referenced well.

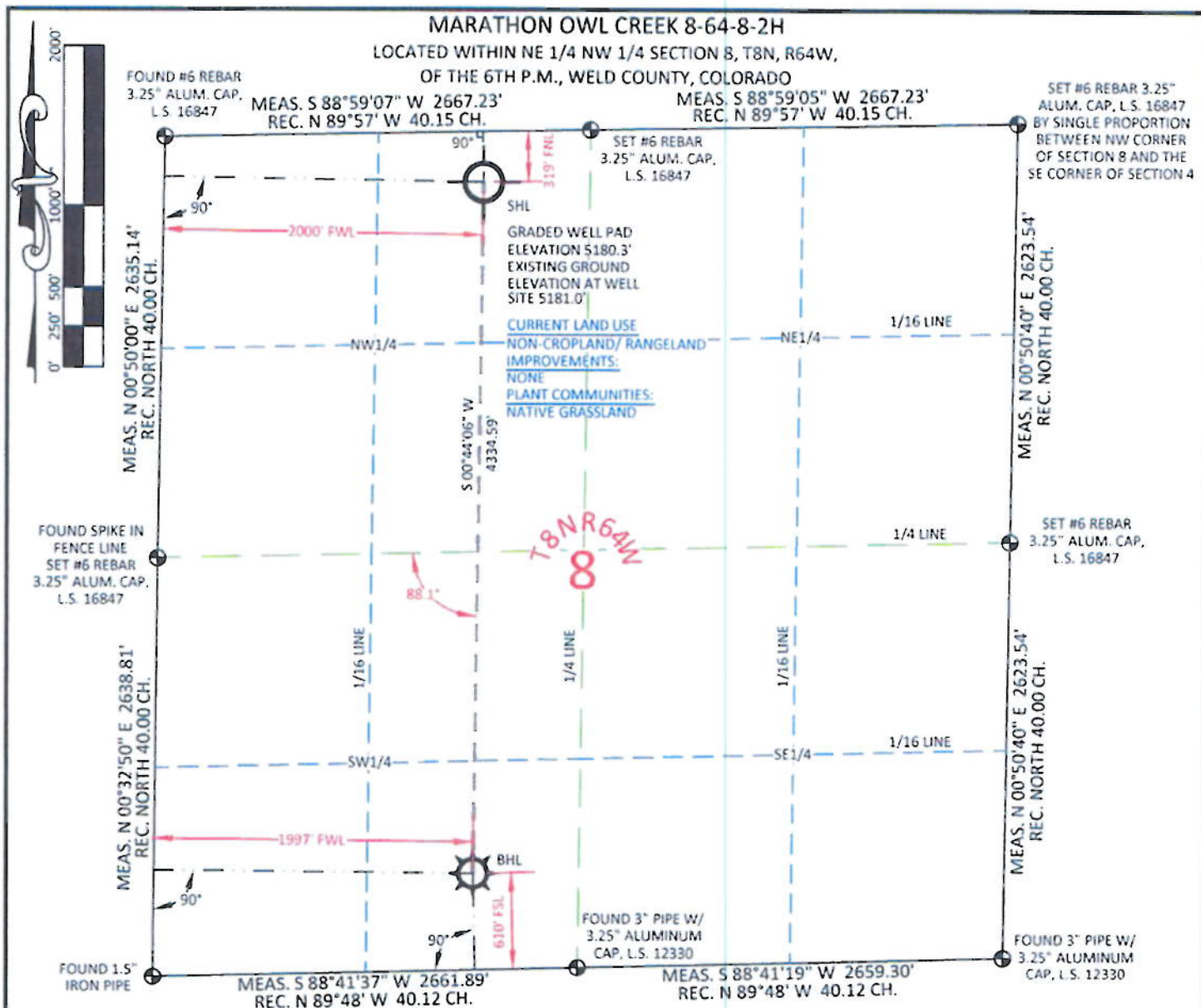
The enclosed notification, pursuant to Rule 305, is required as part of the filing process. Please contact Tricia Clarke, Marathon Land Representative, at 713-296-2230 if you have any questions.

Sincerely,

A handwritten signature in blue ink, appearing to read 'C.K. Bibeau'.

Erin Bibeau
Regulatory Compliance Rep.

Enclosures: Well Location Plat
Pad & Road Location Plats



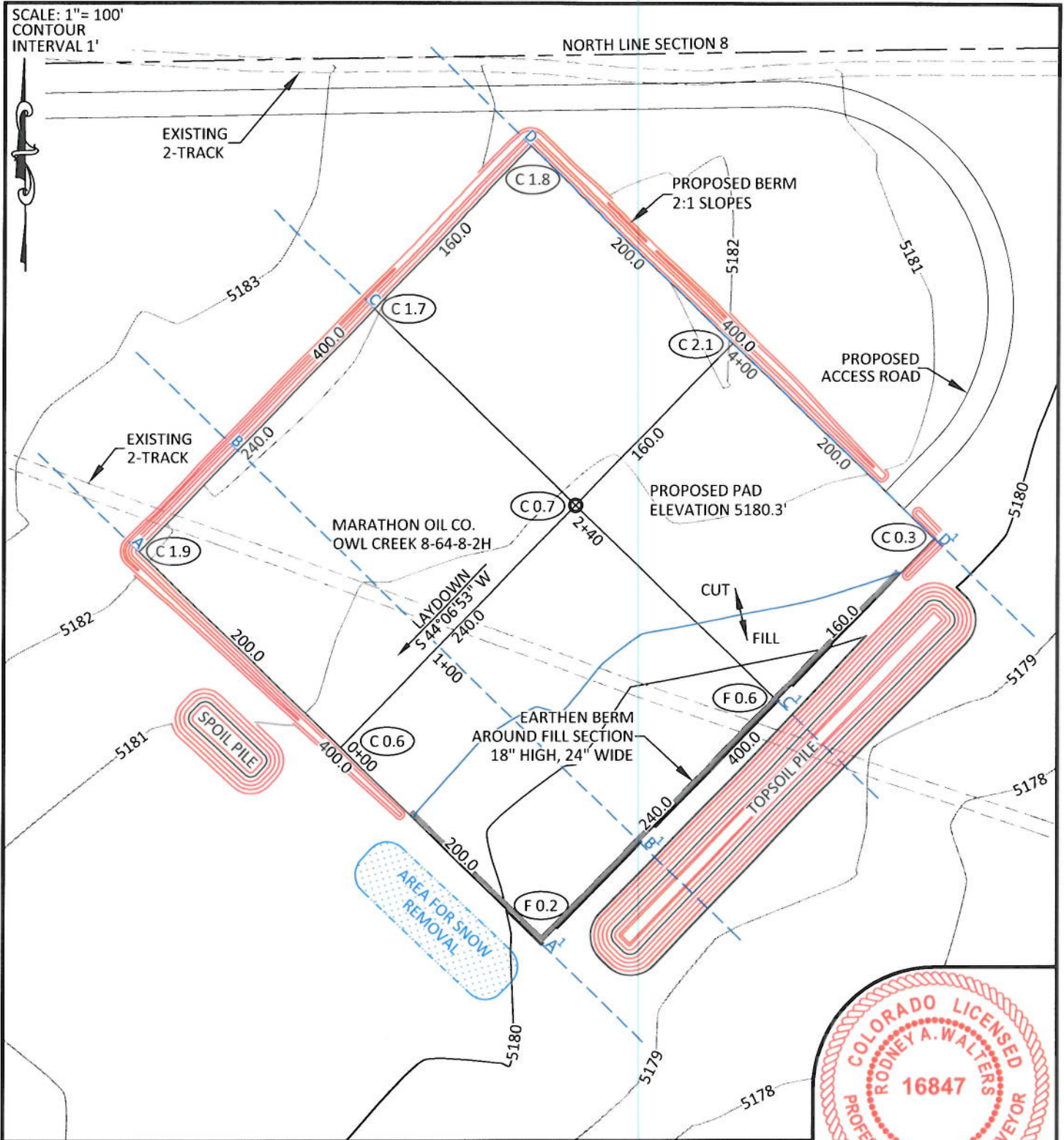
SURFACE HOLE LOCATION		BOTTOM HOLE LOCATION		<p>I, Rodney A. Walters, Professional Land Surveyor, CO. RLS # 16847 hereby certify that (in accordance with a request from Erin Bibeau with Marathon Oil Co, 5555 San Felipe, Houston, TX 77056) I and or personnel under my direction made a survey on the 20th day of February 2012, for the Surface Hole Location and Elevation of Marathon Oil Co. OWL CREEK 8-64-8-2H being located within NE1/4 NW1/4, Section 8, T8N, R64W, and the Bottom Hole Location being located in the SE1/4 SW1/4 of Section 8, T8N, R64W, both being of the 6th P.M., Weld County, State of Colorado.</p> <ul style="list-style-type: none"> All bearings and distances are GRID, based on the Colorado State Plane Coordinate System, North Zone, North American Datum 1983 from GPS observations occupying a WHS control point (5/8" rebar) and having the Location and Elevation derived from an Opus Solution. Vertical Datum used is of NAVD 88. Record Bearings and Distances as shown are based on the General Land Office Survey plat approved on the 20th day of October 1870.
LAT.	LONG.	LAT.	LONG.	
40.680996°	104.574332°	40.669101°	104.574695°	<p>FOOTAGE: 2000' FWL - 319' FNL</p> <p>MEASURE DATE: 2/20/2012</p> <p>INSTRUMENT OPERATOR: ALLEN BLATTEL</p> <p>PDOP: 1.4</p> <p>SHL GRND ELEV.: 5181.0'</p>
40.681015°	104.573817°	40.669120°	104.574180°	
40°40'51.58"	104°34'27.59"	40°40'08.76"	104°34'28.90"	<p>FOOTAGE: 1997' FWL - 610' FSL</p> <p>MEASURE DATE: 2/20/2012</p> <p>INSTRUMENT OPERATOR: ALLEN BLATTEL</p> <p>PDOP: 1.4</p> <p>SHL GRND ELEV.: 5181.0'</p>
40°40'51.65"	104°34'25.74"	40°40'08.83"	104°34'27.05"	
NORTH	1492269.83	NORTH	1487935.60	<p>CONFIDENTIALITY NOTES: The information contained in this plat is legally privileged and confidential information intended only for the use of the recipients. If you are not the intended recipients, you are hereby notified that any use, dissemination, distribution or copying of this information is strictly prohibited.</p>
EAST	3256734.86	EAST	3256679.25	
NORTH	492269.63	NORTH	487935.47	<p>CONFIDENTIALITY NOTES: The information contained in this plat is legally privileged and confidential information intended only for the use of the recipients. If you are not the intended recipients, you are hereby notified that any use, dissemination, distribution or copying of this information is strictly prohibited.</p>
EAST	2256884.58	EAST	2256828.98	



WILLIAM H. SMITH & ASSOCIATES P.C. SURVEYING CONSULTANTS		LEGEND		LOCATION:		MARATHON OIL COMPANY	
<p>150 EAST SECOND NORTH GREEN RIVER, WY 81501 PHONE: 307.875.3638 307.875.3639 www.williamhsmithpc.com</p>		<p>● FOUND OR SET CORNER</p> <p>⊗ CALCULATED CORNER</p> <p>○ NOTHING FOUND</p>		<p>OWL CREEK 8-64-8-2H WITHIN NE1/4 NW 1/4 SECTION 8, T 8 N, R 64 W, 6TH PM, WELD COUNTY, COLORADO</p>		<p>PO BOX 3128, HOUSTON TX, 77253 5555 SAN FELIPE, HOUSTON TX, 77056</p>	
<p>DRAWN BY: LAL PROJECT NO: 86482H REVISIONS:</p>		<p>CHECKED BY: RAW JOB NO: 2011001</p>		<p>WELL LOCATION PLAT</p>		<p>SCALE: 1"=1000' DATE: 2/21/2012</p>	
						<p>EXHIBIT "A" SHEET 1 OF 1</p>	

SCALE: 1"= 100'
CONTOUR
INTERVAL 1'

NORTH LINE SECTION 8



NOTES:

- Elevation of pad shown on plans are to constructed pad without final gravel padding placement. Depth, volume, and padding material to be determined by operator.
- The information contained in this plat is legally privileged and confidential information intended only for the use of the recipients. If you are not the intended recipients, you are hereby notified that any use, dissemination, distribution or copying of this information is strictly prohibited.



**WILLIAM H. SMITH
& ASSOCIATES P.C.**

SURVEYING CONSULTANTS
550 EAST SECOND NORTH PHONE: 307-875-3638
GREEN RIVER, WY 307-875-3639
www.whsmithpc.com

DRAWN BY: BW CHECKED BY: RAW
PROJECT NO: 86482H JOB NO: 2011001
REVISIONS:

CONSTRUCTION DATA

CUT SLOPE:	3:1
FILL SLOPE:	3:1
TOTAL CUT:	5,264 CU. YDS.
TOTAL FILL:	1,723 CU. YDS.
TOP SOIL AT 6"	3,230 CU. YDS.
SPOIL	311 CU. YDS.
DISTURBED AREA	174,446 SQ. FT.
DISTURBED AREA	4.00 ACRES

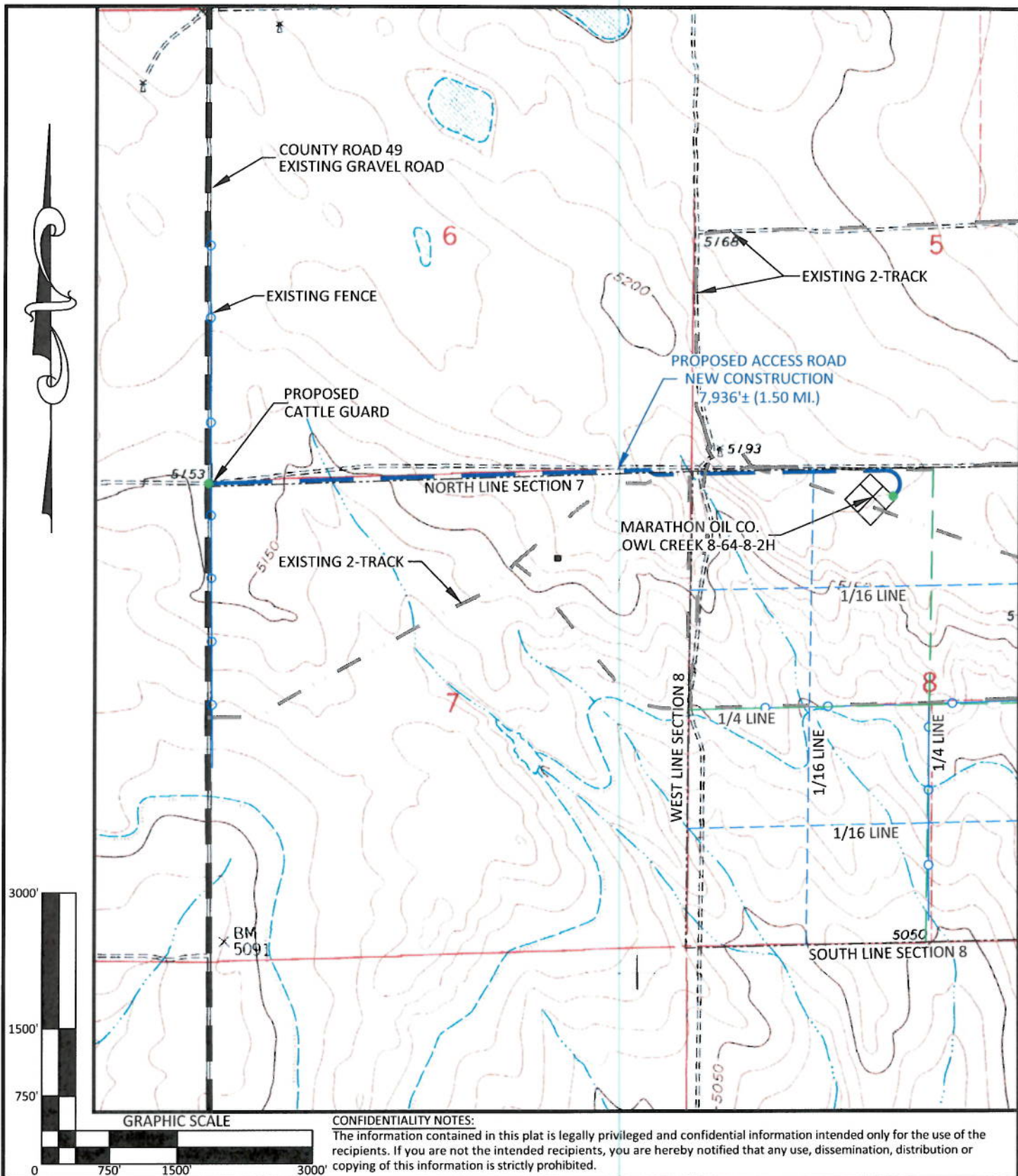
LOCATION:


OWL CREEK
8-64-8-2H
WITHIN THE NE/4
NW/4 SECTION 8,
T 8 N, R 64 W,
6TH PM.
WELD COUNTY,
COLORADO

MARATHON OIL COMPANY
PO BOX 3128, HOUSTON TX, 77253
5555 SAN FELIPE, HOUSTON TX, 77056

CONSTRUCTION LAYOUT

319' FNL	2000' FWL
SCALE: 1"=100'	EXHIBIT "I"
DATE: 2/21/2012	SHEET 8 OF 14



 <p>WILLIAM H. SMITH & ASSOCIATES P.C. SURVEYING CONSULTANTS 550 EAST SECOND NORTH PHONE: 307-875-3638 GREEN RIVER, WY 307-875-3639 www.whsmithpc.com</p> <p>DRAWN BY: BW CHECKED BY: RAW PROJECT NO: 86482H JOB NO: 2011001 REVISIONS:</p>	<p>LEGEND</p> <p>PROPOSED ACCESS ———</p> <p>EXISTING 2-TRACK ———</p> <p>EXISTING ROAD ———</p> <p>1/16 LINE ———</p> <p>1/4 LINE ———</p> <p>SECTION LINE ———</p> <p>FENCE ———</p>	<p>LOCATION: OWL CREEK 8-64-8-2H WITHIN THE NE/4 NW/4 SECTION 8, T 8 N, R 64 W, 6TH PM. WELD COUNTY, COLORADO</p>	<p>MARATHON OIL COMPANY PO BOX 3128, HOUSTON TX, 77253 5555 SAN FELIPE, HOUSTON TX, 77056</p> <p>ACCESS ROAD MAP</p> <p>SCALE: 1"=1500' EXHIBIT "E" DATE: 2/21/2012 SHEET 4 OF 14</p>
--	--	--	---