

T5N, R90W, 6th P.M.

SWEPI LP

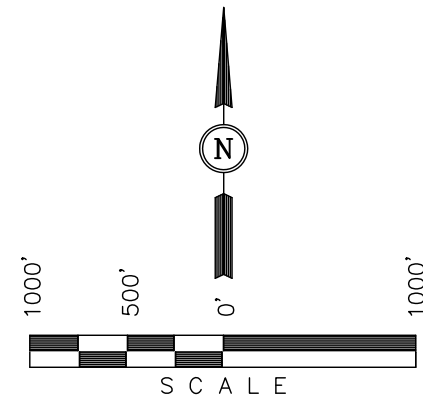
Well location, SEARCY GULCH #1-27, located as shown in the NW 1/4 NE 1/4 of Section 27, T5N, R90W, 6th P.M., Moffat County, Colorado.

### BASIS OF ELEVATION

SPOT ELEVATION AT THE NORTHEAST CORNER OF SECTION 31, T5N, R90W, 6th P.M. TAKEN FROM THE HAMILTON, QUADRANGLE, COLORADO, MOFFAT COUNTY, 7.5 MINUTE QUAD. (TOPOGRAPHIC MAP) PUBLISHED BY THE UNITED STATES DEPARTMENT OF THE INTERIOR, GEOLOGICAL SURVEY. SAID ELEVATION IS MARKED AS BEING 6664 FEET.

### BASIS OF BEARINGS

BASIS OF BEARINGS IS A G.P.S. OBSERVATION.



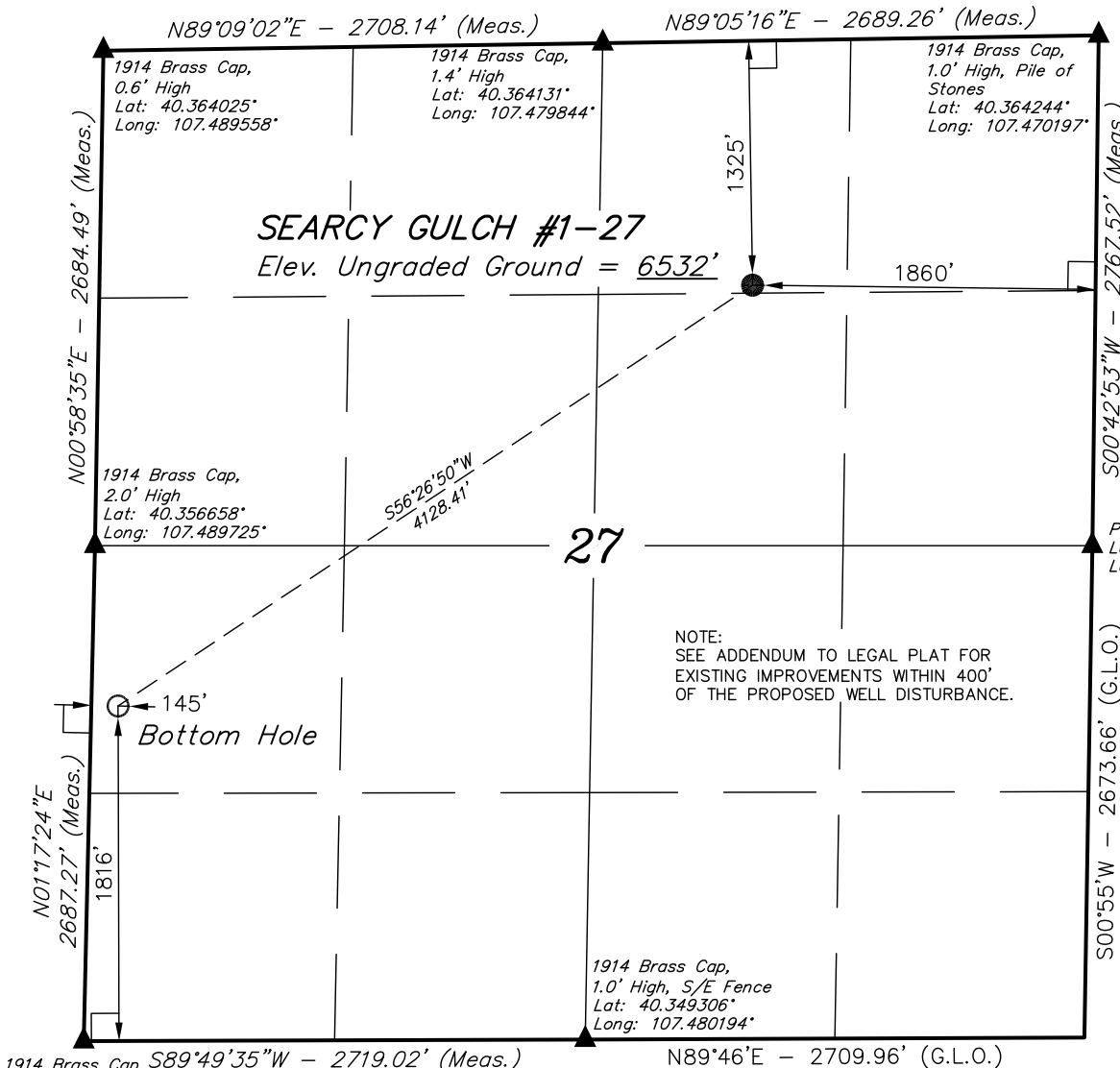
### CERTIFICATE

THIS IS TO CERTIFY THAT THE ABOVE PLAT WAS PREPARED FROM FIELD NOTES OF ACTUAL SURVEYS MADE BY ME OR UNDER MY SUPERVISION AND THAT THE SAME ARE TRUE AND CORRECT TO THE BEST OF MY KNOWLEDGE AND BELIEF.

REGISTERED LAND SURVEYOR  
REGISTRATION NO. 17492  
STATE OF COLORADO

REV.: 02-08-12  
REV.: 01-11-12

**UINTAH ENGINEERING & LAND SURVEYING**  
85 SOUTH 200 EAST - VERNAL, UTAH 84078  
(435) 789-1017



1914 Brass Cap, S89°49'35"W - 2719.02' (Meas.)  
2.3' High, Pile of Stones  
Lat: 40.349286°  
Long: 107.489947°

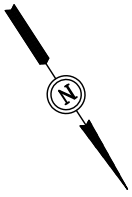
### LEGEND:

- └─┘ = 90° SYMBOL
- = PROPOSED WELL HEAD.
- ▲ = SECTION CORNERS LOCATED

PDOP = 1.3

NAD 83 (TARGET BOTTOM HOLE)	NAD 83 (SURFACE LOCATION)
LATITUDE = 40°21'15.38" (40.354272)	LATITUDE = 40°21'37.90" (40.360528)
LONGITUDE = 107°29'21.40" (107.489278)	LONGITUDE = 107°28'36.96" (107.476933)
NAD 27 (TARGET BOTTOM HOLE)	NAD 27 (SURFACE LOCATION)
LATITUDE = 40°21'15.47" (40.354297)	LATITUDE = 40°21'37.99" (40.360553)
LONGITUDE = 107°29'19.18" (107.488661)	LONGITUDE = 107°28'34.74" (107.476317)

SCALE 1" = 1000'	DATE SURVEYED: 11-12-11	DATE DRAWN: 11-21-11
PARTY B.H. N.F. J.I.	REFERENCES G.L.O. PLAT	
WEATHER COOL	FILE SWEPI LP	



SWEPI LP  
ADDENDUM TO LEGAL PLAT FOR  
SEARCY GULCH #1-27  
SECTION 27, T5N, R90W, 6th P.M.  
1325' FNL 1860' FEL

SCALE: 1" = 200'  
DATE: 11-21-11  
DRAWN BY: J.I.  
REV.: 02-02-12

