

SWEPI LP
DEAL GULCH #1-16
LOCATED IN MOFFAT COUNTY, COLORADO
SECTION 16, T5N, R90W, 6th P.M.

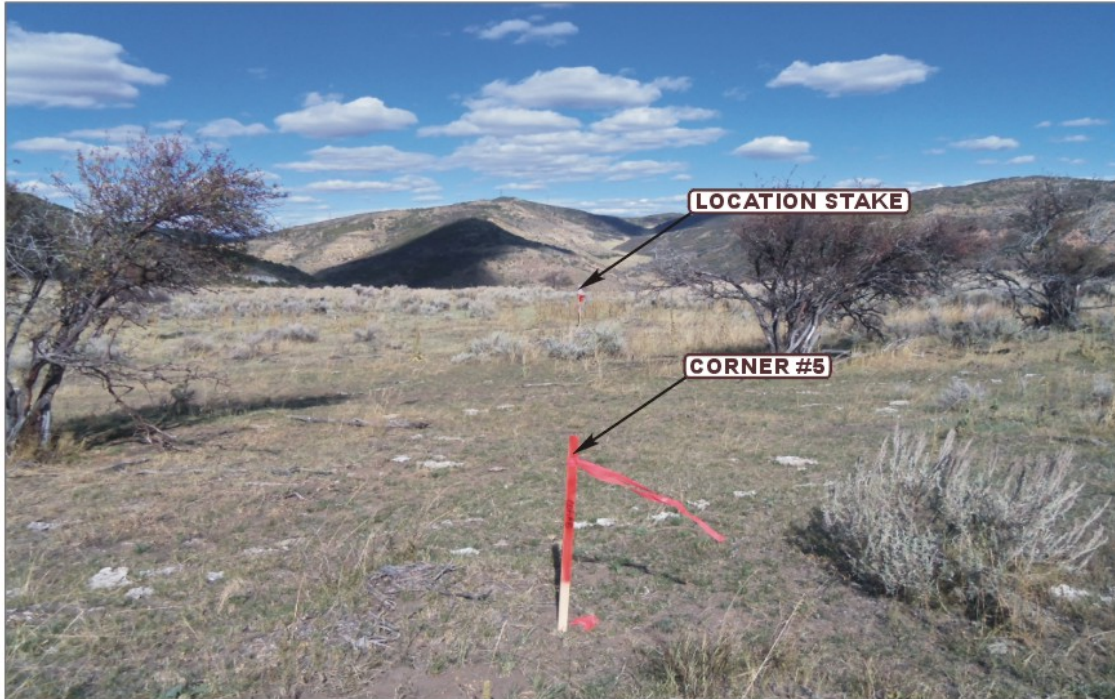


PHOTO: VIEW FROM CORNER #5 TO LOCATION STAKE

CAMERA ANGLE: NORTHEASTERLY



PHOTO: VIEW FROM BEGINNING OF PROPOSED ACCESS

CAMERA ANGLE: SOUTHWESTERLY



U
E
L
S Uintah Engineering & Land Surveying
85 South 200 East Vernal, Utah 84078
(435) 789-1017 * FAX (435) 789-1813

LOCATION PHOTOS

11 **14** **11**
MONTH DAY YEAR

TAKEN BY: B.H.

DRAWN BY: C.I.

REVISED: 00-00-00

PHOTO
P1

SWEPI LP
DEAL GULCH #1-16
LOCATED IN MOFFAT COUNTY, COLORADO
SECTION 16, T5N, R90W, 6th P.M.



PHOTO: VIEW OF LOCATION STAKE

CAMERA ANGLE: NORTHERLY



PHOTO: VIEW OF LOCATION STAKE

CAMERA ANGLE: EASTERLY



UELS Uintah Engineering & Land Surveying
85 South 200 East Vernal, Utah 84078
(435) 789-1017 * FAX (435) 789-1813

LOCATION PHOTOS

11 **14** **11**
MONTH DAY YEAR

TAKEN BY: B.H.

DRAWN BY: C.I.

REVISED: 00-00-00

PHOTO
P2

SWEPI LP
DEAL GULCH #1-16
LOCATED IN MOFFAT COUNTY, COLORADO
SECTION 16, T5N, R90W, 6th P.M.



PHOTO: VIEW OF LOCATION STAKE

CAMERA ANGLE: SOUTHERLY

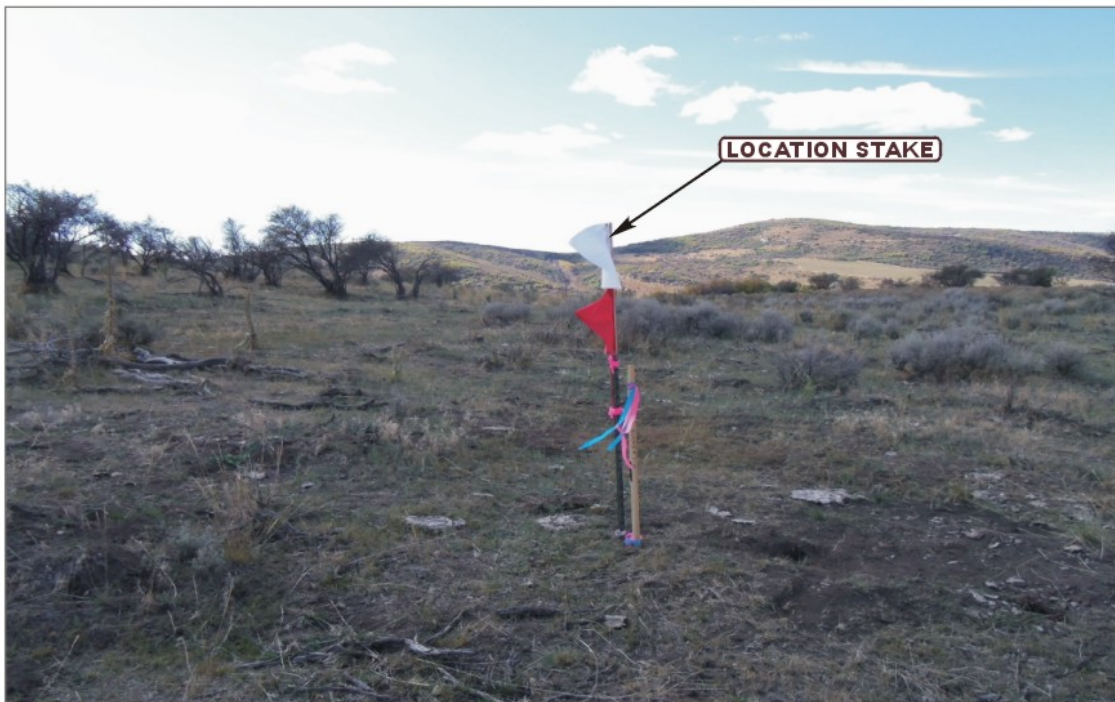


PHOTO: VIEW OF LOCATION STAKE

CAMERA ANGLE: WESTERLY



Uintah Engineering & Land Surveying
85 South 200 East Vernal, Utah 84078
(435) 789-1017 * FAX (435) 789-1813

LOCATION PHOTOS

11 14 11
MONTH DAY YEAR

PHOTO
P3

TAKEN BY: B.H.

DRAWN BY: C.I.

REVISED: 00-00-00