

T5N, R90W, 6th P.M.

SWEPI LP

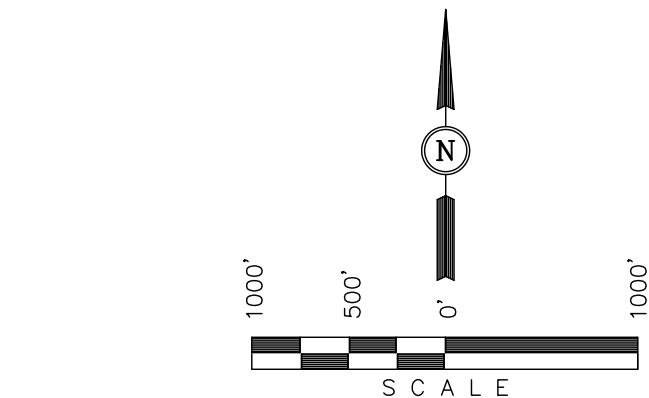
Well location, DEAL GULCH #1-16, located as shown in the SW 1/4 NE 1/4 of Section 16, T5N, R90W, 6th P.M., Moffat County, Colorado.

BASIS OF ELEVATION

SPOT ELEVATION AT THE NORTHEAST CORNER OF SECTION 31, T5N, R90W, 6th P.M. TAKEN FROM THE HAMILTON QUADRANGLE, COLORADO, MOFFAT COUNTY, 7.5 MINUTE QUAD (TOPOGRAPHIC MAP) PUBLISHED BY THE UNITED STATES DEPARTMENT OF THE INTERIOR, GEOLOGICAL SURVEY. SAID ELEVATION IS MARKED AS BEING 6664 FEET.

BASIS OF BEARINGS

BASIS OF BEARINGS IS A G.P.S. OBSERVATION.



CERTIFICATE

THIS IS TO CERTIFY THAT THE ABOVE PLAT WAS PREPARED FROM FIELD NOTES OF ACTUAL SURVEYS MADE BY ME OR UNDER MY SUPERVISION AND THAT THE SAME ARE TRUE AND CORRECT TO THE BEST OF MY KNOWLEDGE AND BELIEF.

REGISTERED LAND SURVEYOR
REGISTRATION NO. 17492
STATE OF COLORADO

UINTAH ENGINEERING & LAND SURVEYING
85 SOUTH 200 EAST - VERNAL, UTAH 84078
(435) 789-1017

1914 Brass Cap,
0.3' High, Pile of
Stones, Carsonite
Post
Lat: 40.379208°
Long: 107.508422°

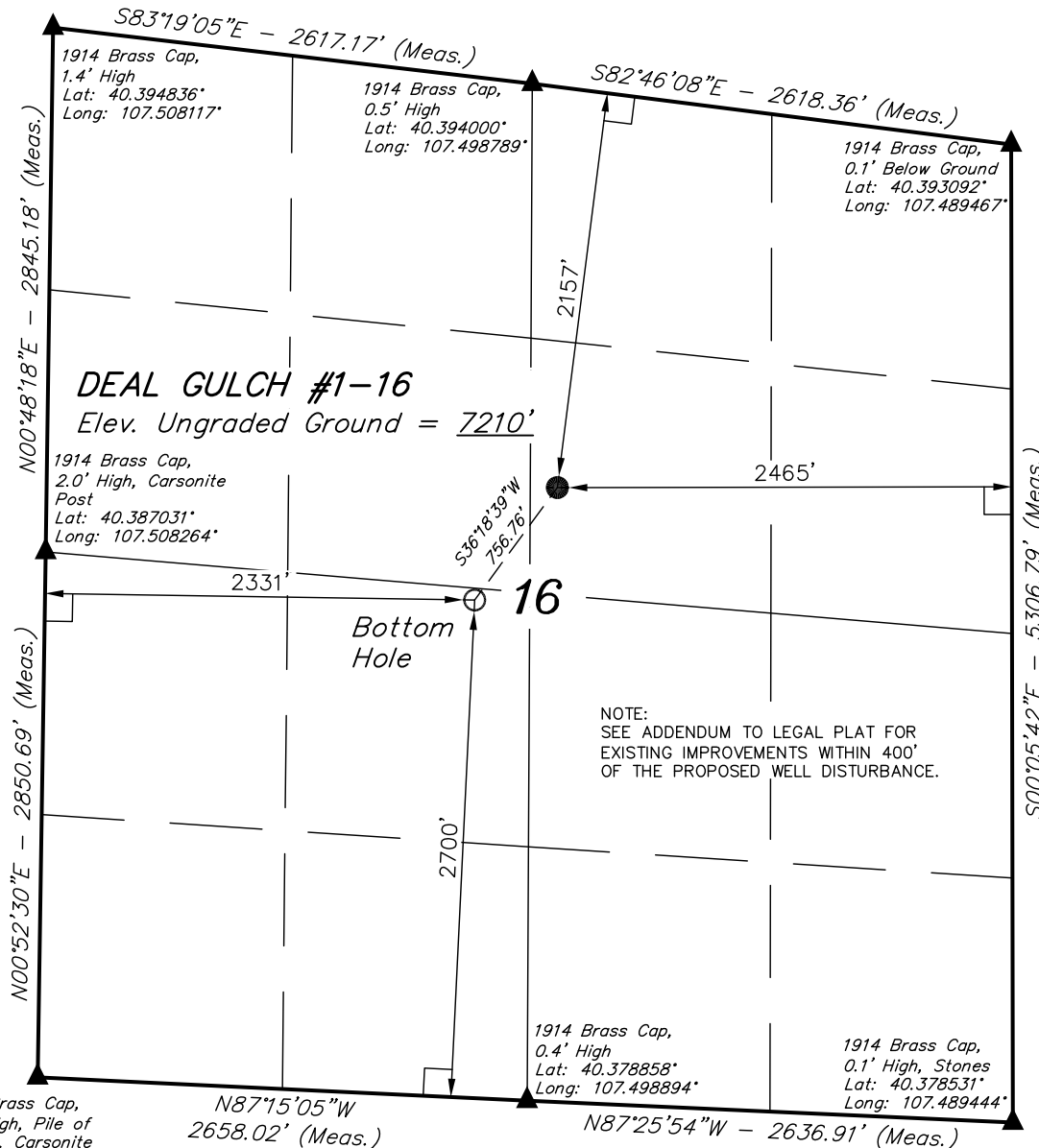
LEGEND:

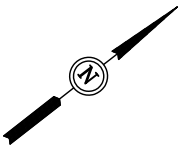
- └─┘ = 90° SYMBOL
- = PROPOSED WELL HEAD.
- ▲ = SECTION CORNERS LOCATED

NAD 83 (TARGET BOTTOM HOLE)	NAD 83 (SURFACE LOCATION)
LATITUDE = 40°23'10.73" (40.386314)	LATITUDE = 40°23'16.75" (40.387986)
LONGITUDE = 107°29'59.69" (107.499914)	LONGITUDE = 107°29'53.89" (107.498303)
NAD 27 (TARGET BOTTOM HOLE)	NAD 27 (SURFACE LOCATION)
LATITUDE = 40°23'10.82" (40.386339)	LATITUDE = 40°23'16.84" (40.388011)
LONGITUDE = 107°29'57.46" (107.499294)	LONGITUDE = 107°29'51.66" (107.497683)

PDOP = 1.6

SCALE 1" = 1000'	DATE SURVEYED: 10-10-11	DATE DRAWN: 02-17-12
PARTY B.H. N.F. J.I.	REFERENCES G.L.O. PLAT	
WEATHER COOL	FILE SWEPI LP	





SWEPI LP
ADDENDUM TO LEGAL PLAT FOR
DEAL GULCH #1-16
SECTION 16, T5N, R90W, 6th P.M.
2157' FNL 2465' FEL

SCALE: 1" = 50'
DATE: 12-05-11
DRAWN BY: J.I.

