

CONFIDENTIALITY NOTES:
 The information contained in this plat is legally privileged and confidential information intended only for the use of the recipients. If you are not the intended recipients, you are hereby notified that any use, dissemination, distribution or copying of this information is strictly prohibited.



**WILLIAM H. SMITH
& ASSOCIATES P.C.**
 SURVEYING CONSULTANTS
 650 EAST SECOND NORTH PHONE: 307-875-3638
 GREEN RIVER, WY 307-875-3639
 www.whsmithpc.com

DRAWN BY: LAL CHECKED BY: RAW
 PROJECT NO: 363143H JOB NO: 2011001
 REVISIONS: 2/29/2012 NEW ACCESS ROAD LOCATION

LEGEND

- 400' PERIMETER
- PROPOSED ACCESS
- EXISTING 2-TRACK
- BURIED WATERLINE
- EXISTING OHP
- SECTION LINE
- 1/4 LINE

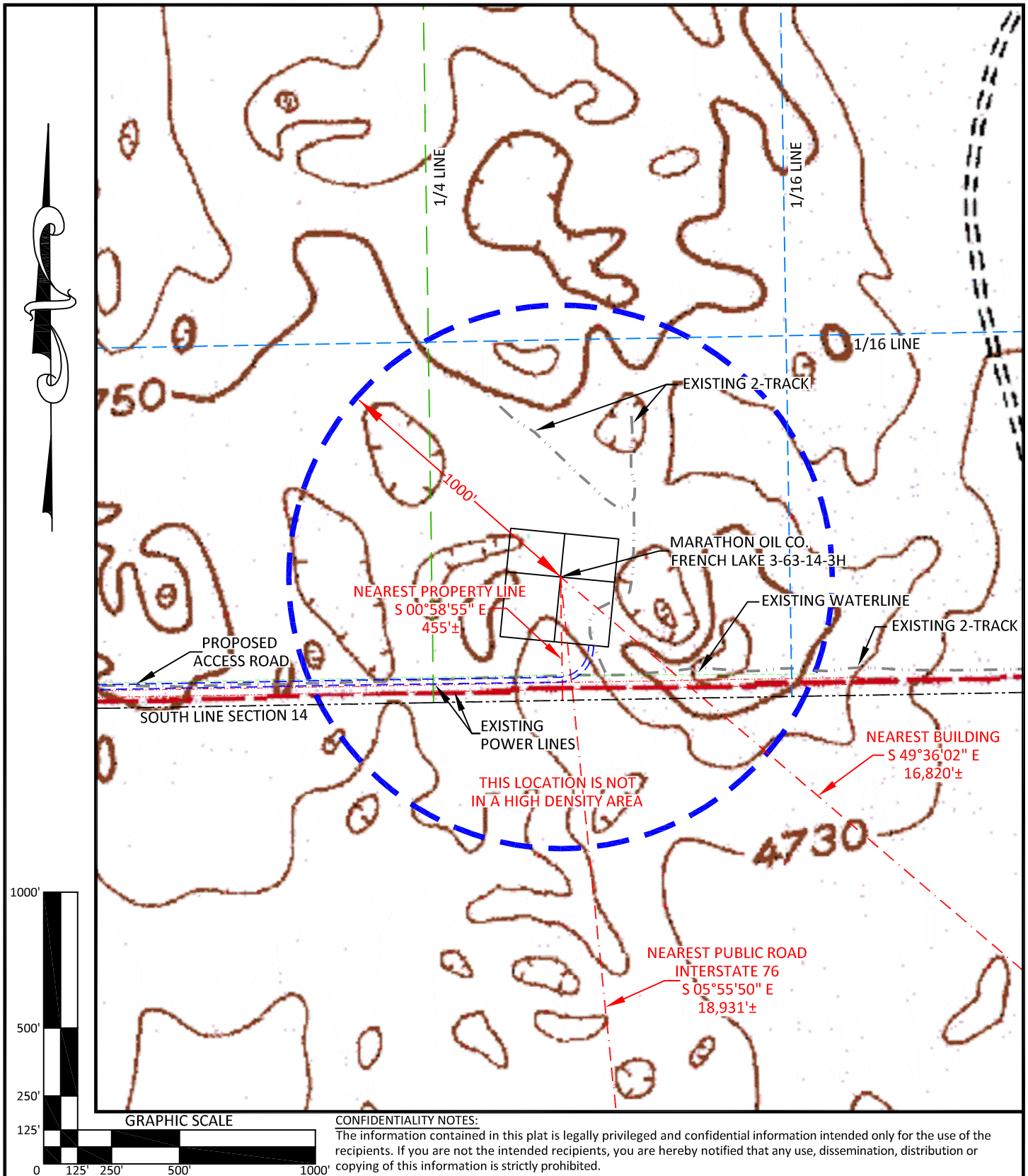
LOCATION:

FRENCH LAKE
 3-63-14-3H
 WITHIN THE SW/4
 SE/4, SECTION 14,
 T 3 N, R 63 W,
 6TH PM.
 WELD COUNTY,
 COLORADO

MARATHON OIL COMPANY
 PO BOX 3128, HOUSTON TX, 77253
 5555 SAN FELIPE, HOUSTON TX, 77056

LOCATION DRAWING

SCALE: 1"=200' EXHIBIT "C"
 DATE: 2/8/2012 SHEET 2 OF 14



CONFIDENTIALITY NOTES:
 The information contained in this plat is legally privileged and confidential information intended only for the use of the recipients. If you are not the intended recipients, you are hereby notified that any use, dissemination, distribution or copying of this information is strictly prohibited.



**WILLIAM H. SMITH
& ASSOCIATES P.C.**
 SURVEYING CONSULTANTS
 550 EAST SECOND NORTH PHONE: 307-875-3638
 GREEN RIVER, WY 307-875-3639
 www.whsmithpc.com

DRAWN BY: LAL CHECKED BY: RAW
 PROJECT NO: 363143H JOB NO: 2011001
 REVISIONS: 2/29/2012 NEW ACCESS ROAD LOCATION

LEGEND	
1000' RADIUS	
PROPOSED ACCESS	
EXISTING 2-TRACK	
BURIED WATERLINE	
1/16 LINE	
1/4 LINE	
SECTION LINE	

LOCATION:
 FRENCH LAKE
 3-63-14-3H
 WITHIN THE SW/4
 SE/4, SECTION 14,
 T 3 N, R 63 W,
 6TH PM.
 WELD COUNTY,
 COLORADO

MARATHON OIL COMPANY PO BOX 3128, HOUSTON TX, 77253 5555 SAN FELIPE, HOUSTON TX, 77056	
CULTURE MAP	
SCALE: 1"=500'	EXHIBIT "H"
DATE: 2/8/2012	SHEET 7 OF 14