

**WILLIAM H. SMITH  
& ASSOCIATES P.C.**  
SURVEYING CONSULTANTS  
650 EAST SECOND NORTH PHONE: 307-875-3638  
GREEN RIVER, WY 307-875-3639  
www.whsmithpc.com

DRAWN BY: BW CHECKED BY: RAW  
PROJECT NO: 363221H JOB NO: 2011001  
REVISIONS: 2/23/2012 RELOCATE ACCESS ROAD

#### LEGEND

400' PERIMETER ————  
PROPOSED ACCESS ————  
EXISTING 2-TRACK ————  
EXISTING FENCE ————  
SECTION LINE ————  
EXIST WATER LINE ————

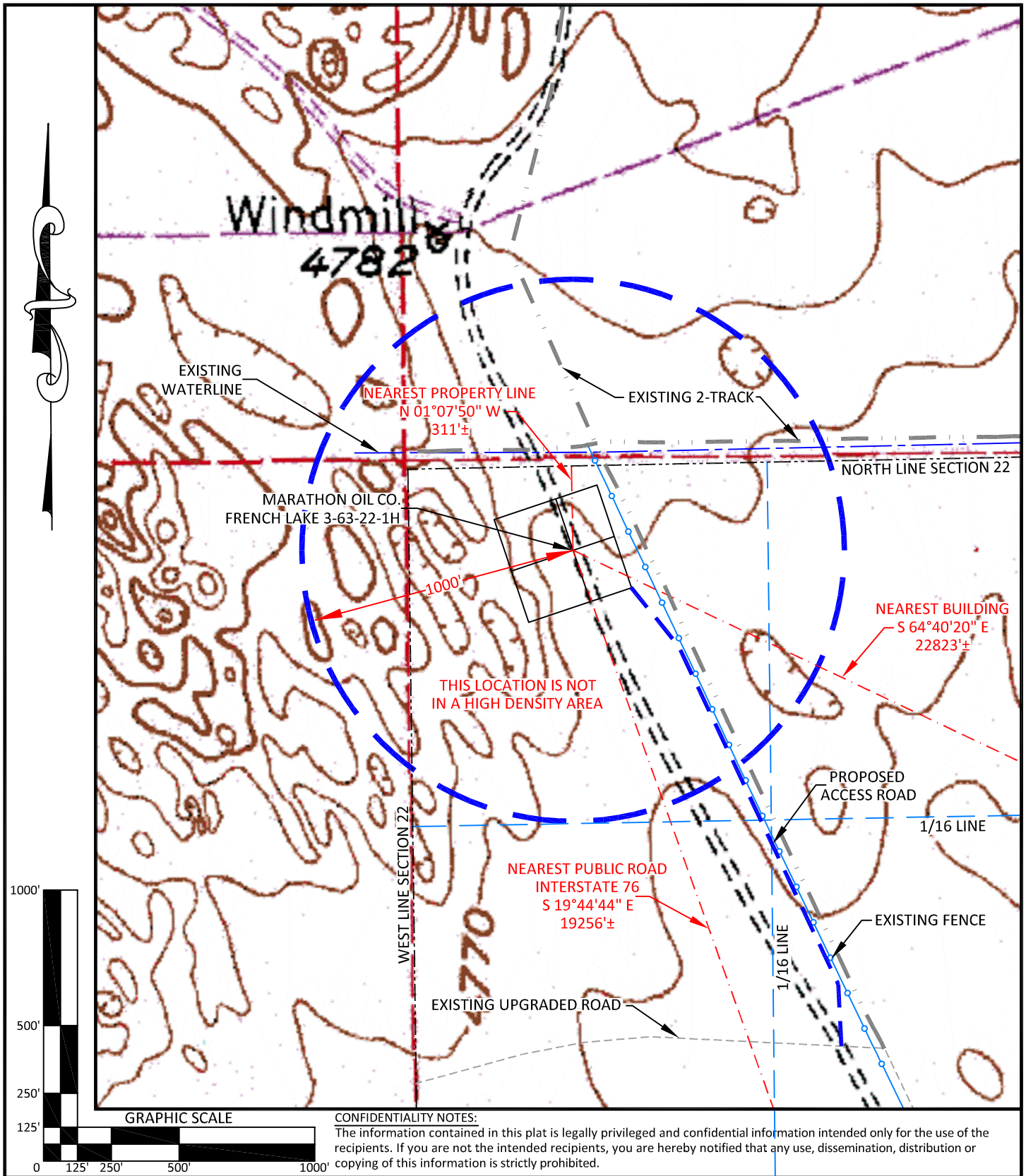
#### LOCATION:

FRENCH LAKE  
3-63-22-1H  
WITHIN THE NW/4  
NW/4 SECTION 22,  
T 3 N, R 63 W,  
6TH PM.  
WELD COUNTY,  
COLORADO

**MARATHON OIL COMPANY**  
PO BOX 3128, HOUSTON TX, 77253  
5555 SAN FELIPE, HOUSTON TX, 77056

#### LOCATION DRAWING

SCALE: 1"=200'  
DATE: 2/8/2012 EXHIBIT "C"  
SHEET 2 OF 14



**WILLIAM H. SMITH  
& ASSOCIATES P.C.**

**SURVEYING CONSULTANTS**  
550 EAST SECOND NORTH PHONE: 307-875-3638  
GREEN RIVER, WY 307-875-3639  
www.whsmithpc.com

DRAWN BY: BW

CHECKED BY: RAW

PROJECT NO: 363221H

JOB NO: 2011001

REVISIONS: 2/23/2012 RELOCATE ACCESS ROAD

**LEGEND**

1000' RADIUS	
PROPOSED ACCESS	
EXISTING 2-TRACK	
FENCE	
1/16 LINE	
UPGRADED ROAD	
SECTION LINE	

**LOCATION:**

FRENCH LAKE  
3-63-22-1H  
WITHIN THE NW/4  
NW/4 SECTION 22,  
T 3 N, R 63 W,  
6TH PM.  
WELD COUNTY,  
COLORADO

**MARATHON OIL COMPANY**  
PO BOX 3128, HOUSTON TX, 77253  
5555 SAN FELIPE, HOUSTON TX, 77056

**CULTURE MAP**

SCALE: 1"=500'

EXHIBIT "H"

DATE: 2/8/2012

SHEET 7 OF 14