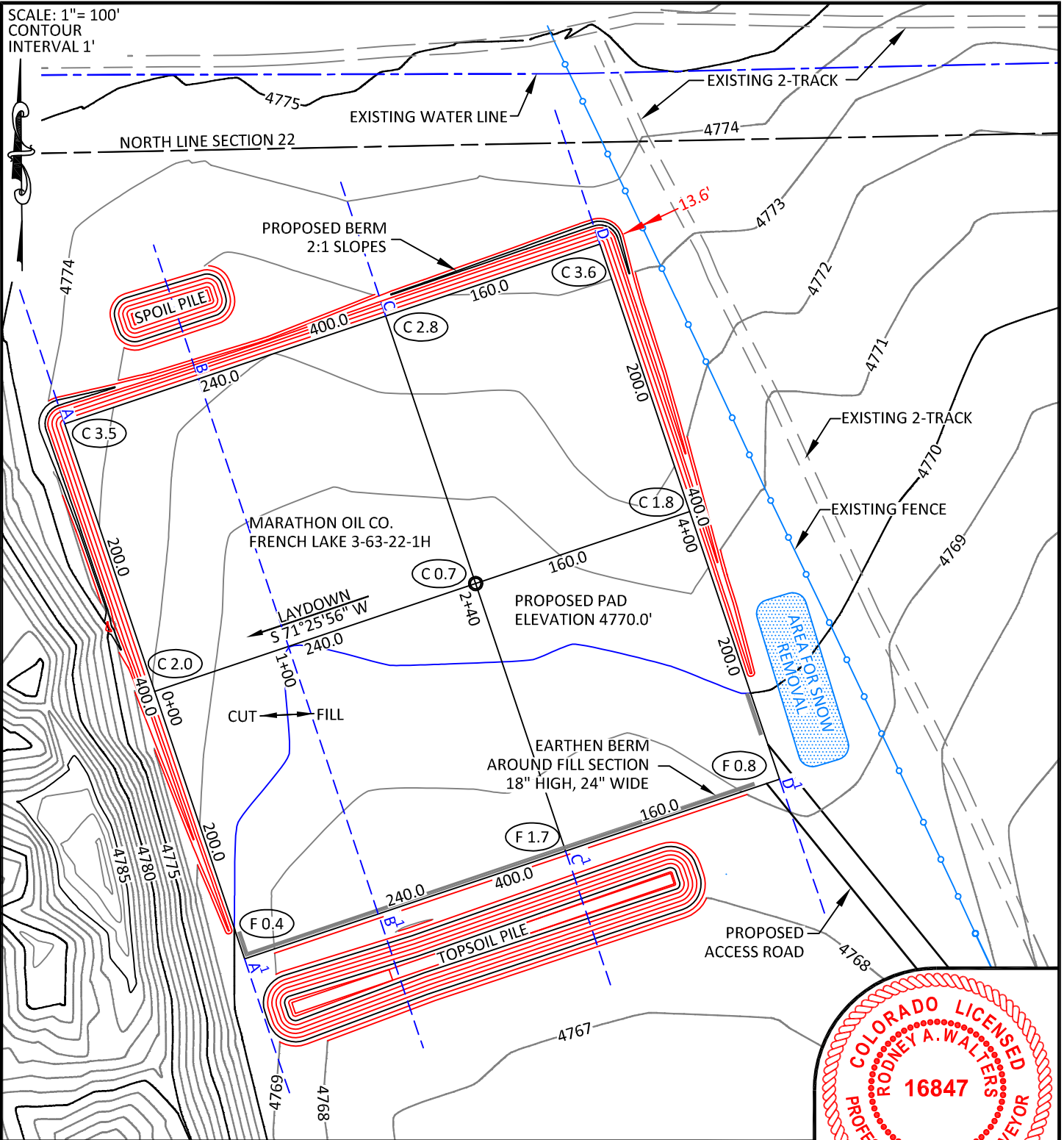
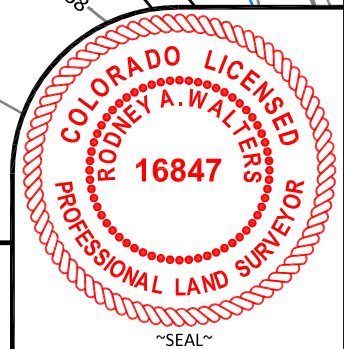


SCALE: 1"= 100'
CONTOUR
INTERVAL 1'



NOTES:

- Elevation of pad shown on plans are to constructed pad without final gravel padding placement. Depth, volume, and padding material to be determined by operator.
- The information contained in this plat is legally privileged and confidential information intended only for the use of the recipients. If you are not the intended recipients, you are hereby notified that any use, dissemination, distribution or copying of this information is strictly prohibited.



**WILLIAM H. SMITH
& ASSOCIATES P.C.**

SURVEYING CONSULTANTS
550 EAST SECOND NORTH PHONE: 307-875-3638
GREEN RIVER, WY 307-875-3639
www.whsmithpc.com

DRAWN BY: BW CHECKED BY: RAW
PROJECT NO: 363221H JOB NO: 2011001
REVISIONS: 2/23/2012 RELOCATE ACCESS ROAD

CONSTRUCTION DATA

CUT SLOPE:	3:1
FILL SLOPE:	3:1
TOTAL CUT:	7,267 CU. YDS.
TOTAL FILL:	3,466 CU. YDS.
TOP SOIL AT 6"	3,319 CU. YDS.
SPOIL	482 CU. YDS.
DISTURBED AREA	179,216 SQ. FT.
DISTURBED AREA	4.11 ACRES

LOCATION:

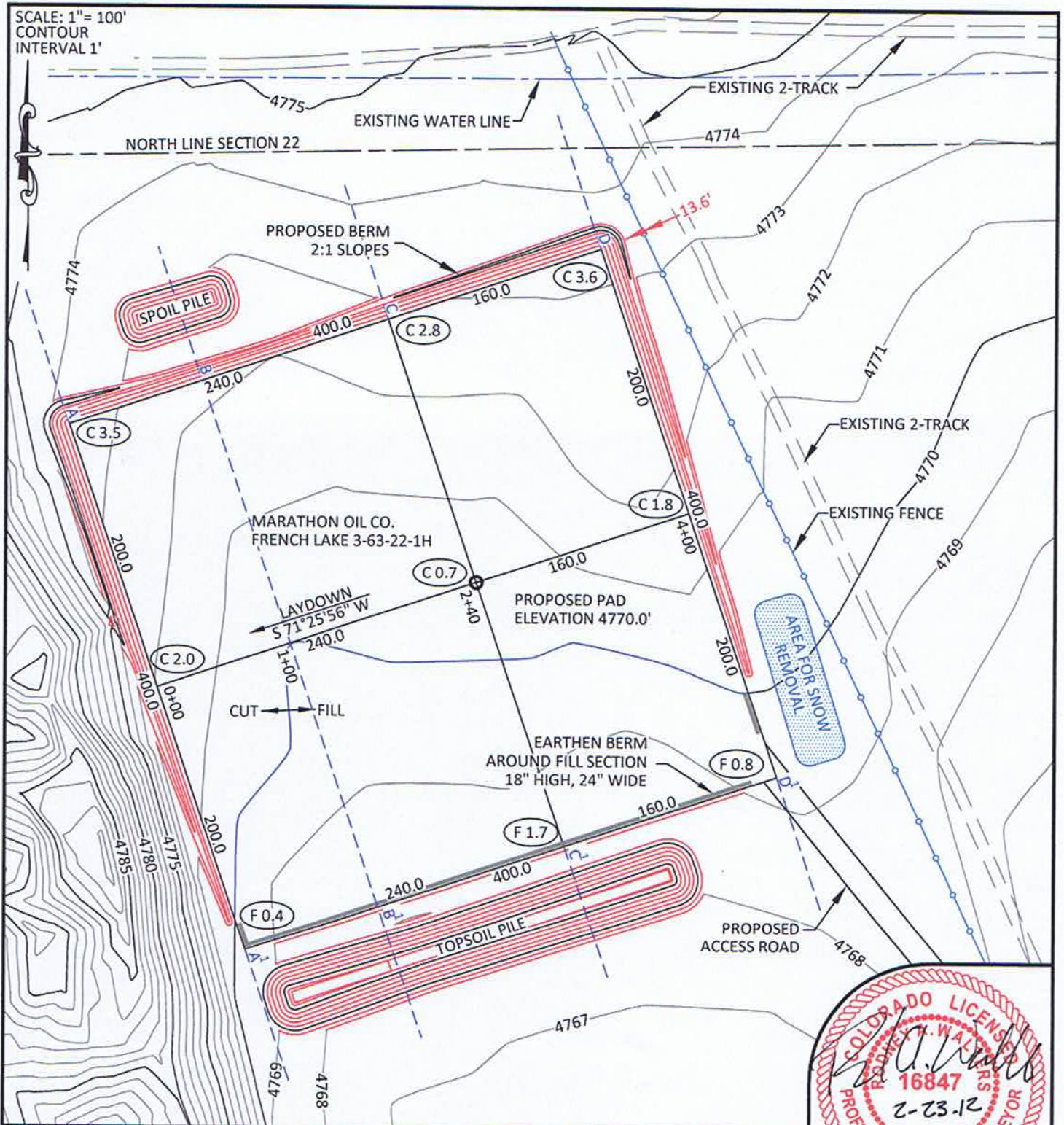
FRENCH LAKE
3-63-22-1H
WITHIN THE NW/4
NW/4 SECTION 22,
T 3 N, R 63 W,
6TH PM.
WELD COUNTY,
COLORADO

MARATHON OIL COMPANY
PO BOX 3128, HOUSTON TX, 77253
5555 SAN FELIPE, HOUSTON TX, 77056

CONSTRUCTION LAYOUT

311' FNL	605' FWL
SCALE: 1"=100'	EXHIBIT "I"
DATE: 2/8/2012	SHEET 8 OF 14

SCALE: 1"= 100'
CONTOUR
INTERVAL 1'



NOTES:

- Elevation of pad shown on plans are to constructed pad without final gravel padding placement. Depth, volume, and padding material to be determined by operator.
- The information contained in this plat is legally privileged and confidential information intended only for the use of the recipients. If you are not the intended recipients, you are hereby notified that any use, dissemination, distribution or copying of this information is strictly prohibited.



**WILLIAM H. SMITH
& ASSOCIATES P.C.**
SURVEYING CONSULTANTS
550 EAST SECOND NORTH
GREEN RIVER, WY
PHONE: 307-875-3638
307-875-3639
www.wsmithpc.com

CONSTRUCTION DATA

CUT SLOPE:	3:1
FILL SLOPE:	3:1
TOTAL CUT:	7,267 CU. YDS.
TOTAL FILL:	3,466 CU. YDS.
TOP SOIL AT 6"	3,319 CU. YDS.
SPOIL:	482 CU. YDS.
DISTURBED AREA	179,216 SQ. FT.
DISTURBED AREA	4.11 ACRES

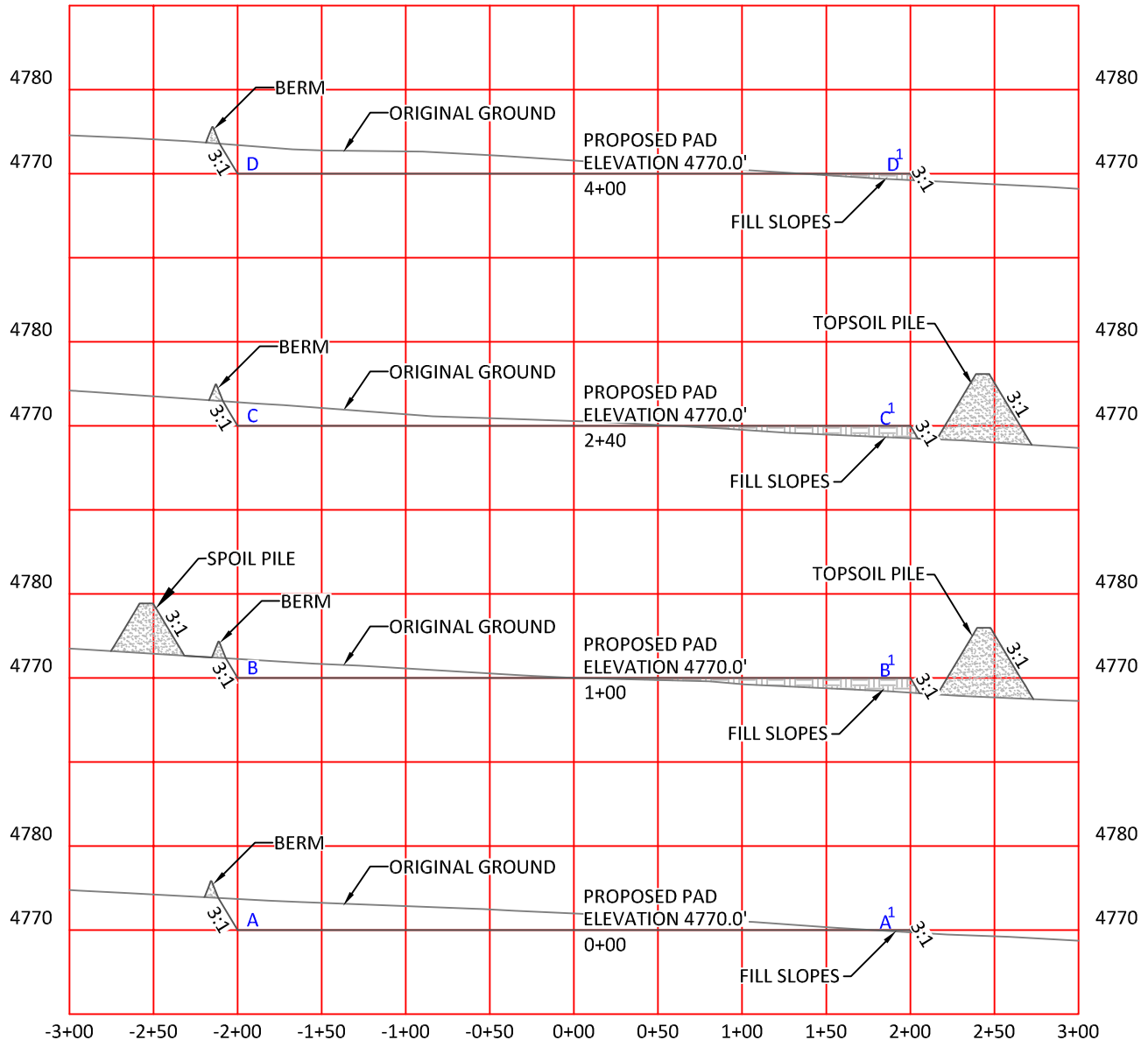
LOCATION:

FRENCH LAKE
3-63-22-1H
WITHIN THE NW/4
NW/4 SECTION 22,
T 3 N, R 63 W,
6TH PM.
WELD COUNTY,
COLORADO

MARATHON OIL COMPANY
PO BOX 3128, HOUSTON TX, 77253
5555 SAN FELIPE, HOUSTON TX, 77056

CONSTRUCTION LAYOUT

311' FNL	605' FWL
SCALE: 1"=100'	EXHIBIT "I"
DATE: 2/8/2012	SHEET 8 OF 14



HORIZONTAL SCALE: 1"=100' - VERTICAL SCALE: 1"=20'

NOTES:

- Elevation of pad shown on plans are to constructed pad without final gravel padding placement. Depth, volume, and padding material to be determined by operator.
- The information contained in this plat is legally privileged and confidential information intended only for the use of the recipients. If you are not the intended recipients, you are hereby notified that any use, dissemination, distribution or copying of this information is strictly prohibited.



**WILLIAM H. SMITH
& ASSOCIATES P.C.**

SURVEYING CONSULTANTS
550 EAST SECOND NORTH PHONE: 307-875-3638
GREEN RIVER, WY 307-875-3639
www.whsmithpc.com

CONSTRUCTION DATA

CUT SLOPE:	3:1
FILL SLOPE:	3:1
TOTAL CUT:	7,267 CU. YDS.
TOTAL FILL:	3,466 CU. YDS.
TOP SOIL AT 6"	3,319 CU. YDS.
SPOIL	482 CU. YDS.
DISTURBED AREA	179,216 SQ. FT.
DISTURBED AREA	4.11 ACRES

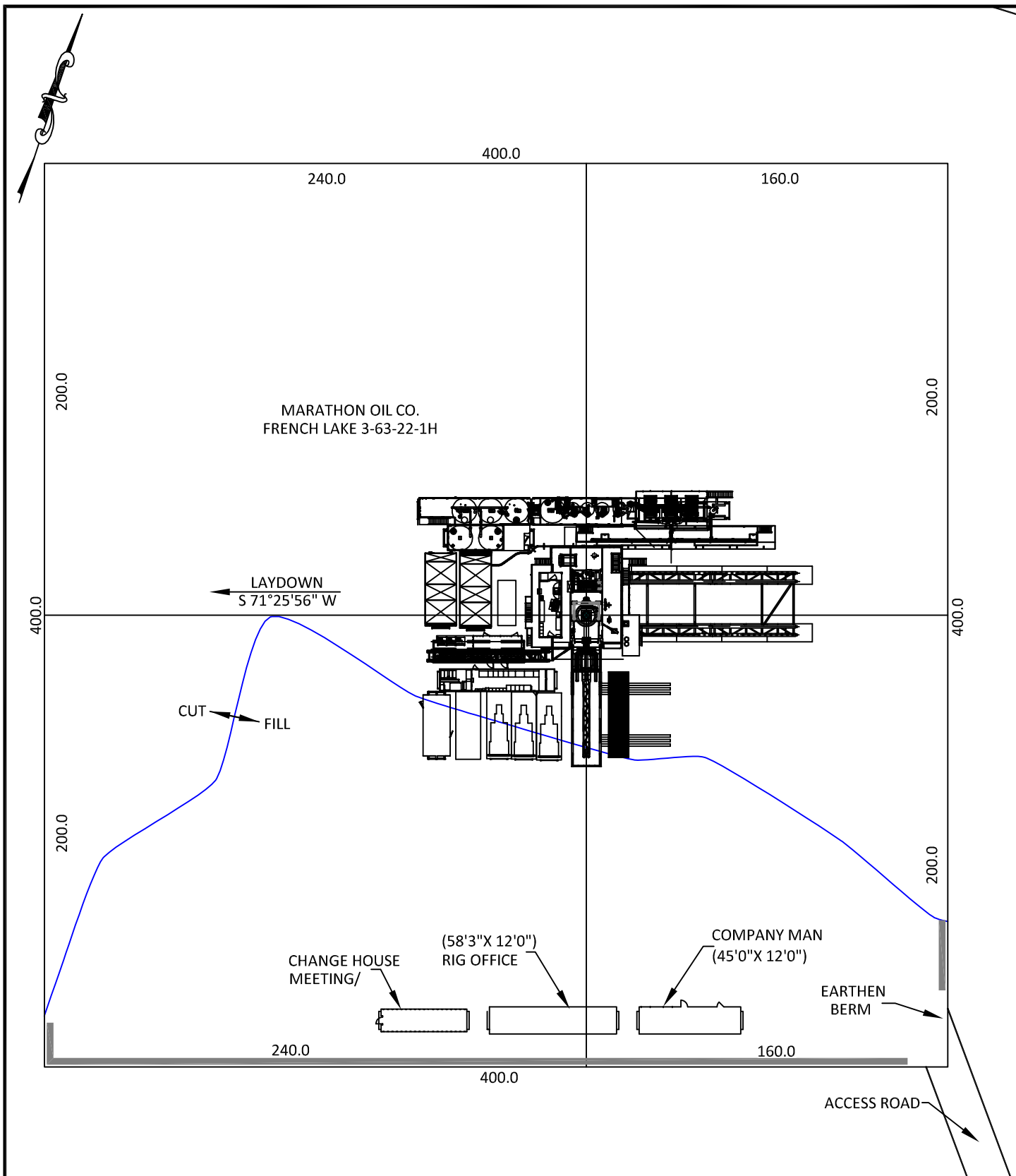
LOCATION:

FRENCH LAKE
3-63-22-1H
WITHIN THE NW/4
NW/4 SECTION 22,
T 3 N, R 63 W,
6TH PM.
WELD COUNTY,
COLORADO

MARATHON OIL COMPANY
PO BOX 3128, HOUSTON TX, 77253
5555 SAN FELIPE, HOUSTON TX, 77056

**CONSTRUCTION LAYOUT
CROSS SECTIONS**

SCALE: AS NOTED	EXHIBIT "J"
DATE: 2/8/2012	SHEET 9 OF 14



**WILLIAM H. SMITH
& ASSOCIATES P.C.**

SURVEYING CONSULTANTS
550 EAST SECOND NORTH PHONE: 307-875-3638
GREEN RIVER, WY 307-875-3639
www.whsmithpc.com

DRAWN BY: BW CHECKED BY: RAW
PROJECT NO: 363221H JOB NO: 2011001
REVISIONS: 2/23/2012 RELOCATE ACCESS ROAD

CONFIDENTIALITY NOTES:

The information contained in this plat is legally privileged and confidential information intended only for the use of the recipients. If you are not the intended recipients, you are hereby notified that any use, dissemination, distribution or copying of this information is strictly prohibited.

LOCATION:

FRENCH LAKE
3-63-22-1H
WITHIN THE NW/4
NW/4 SECTION 22,
T 3 N, R 63 W,
6TH PM.
WELD COUNTY,
COLORADO

MARATHON OIL COMPANY
PO BOX 3128, HOUSTON TX, 77253
5555 SAN FELIPE, HOUSTON TX, 77056

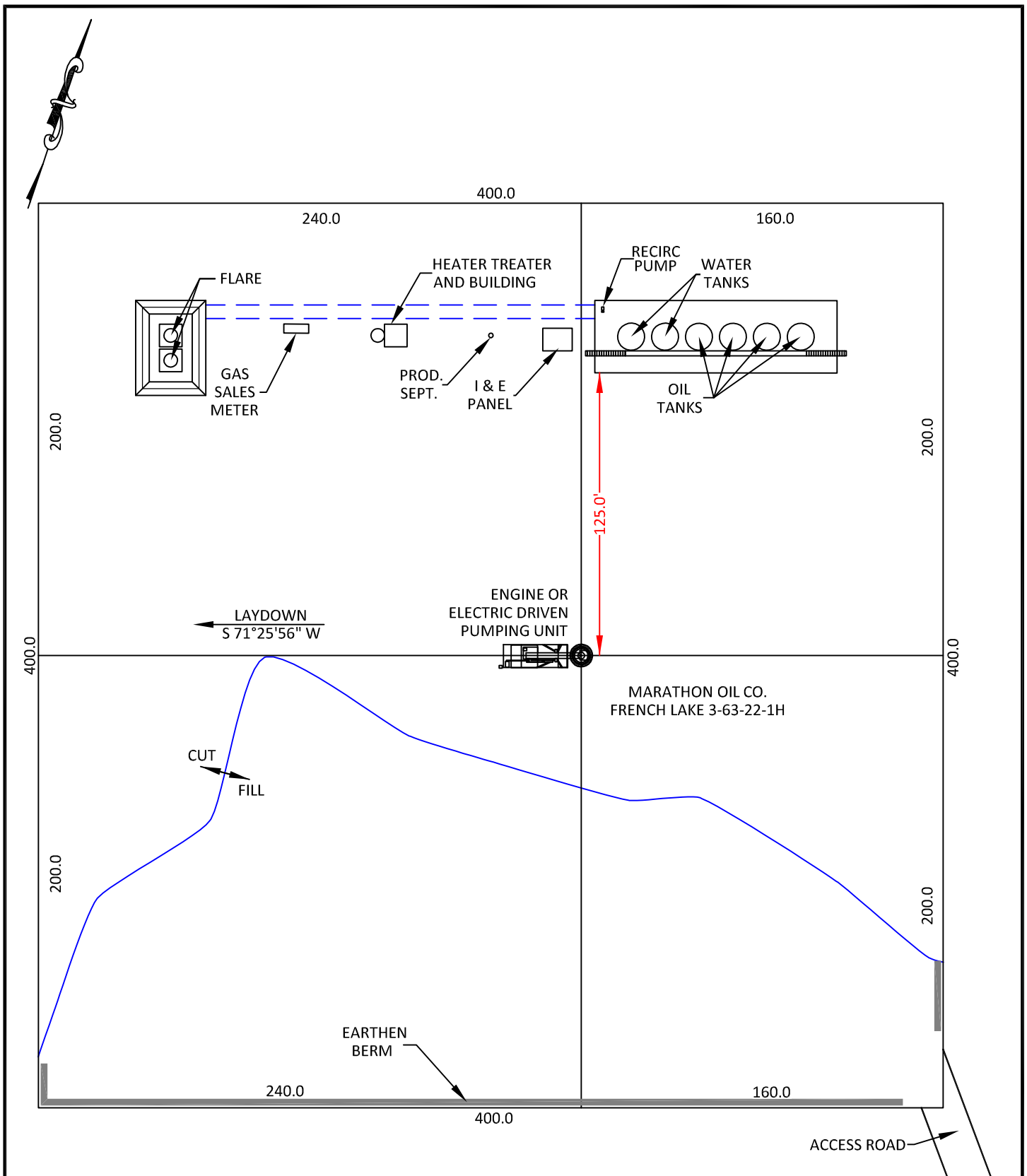
DRILLING FACILITIES

SCALE: 1"=60'

DATE: 2/8/2012

EXHIBIT "K"

SHEET 10 OF 14



**WILLIAM H. SMITH
& ASSOCIATES P.C.**

SURVEYING CONSULTANTS
550 EAST SECOND NORTH PHONE: 307-875-3638
GREEN RIVER, WY 307-875-3639
www.whsmithpc.com

DRAWN BY: BW CHECKED BY: RAW
PROJECT NO: 363221H JOB NO: 2011001
REVISIONS: 2/23/2012 RELOCATE ACCESS ROAD

CONFIDENTIALITY NOTES:

The information contained in this plat is legally privileged and confidential information intended only for the use of the recipients. If you are not the intended recipients, you are hereby notified that any use, dissemination, distribution or copying of this information is strictly prohibited.

LOCATION:

FRENCH LAKE
3-63-22-1H
WITHIN THE NW/4
NW/4 SECTION 22,
T 3 N, R 63 W,
6TH PM.
WELD COUNTY,
COLORADO

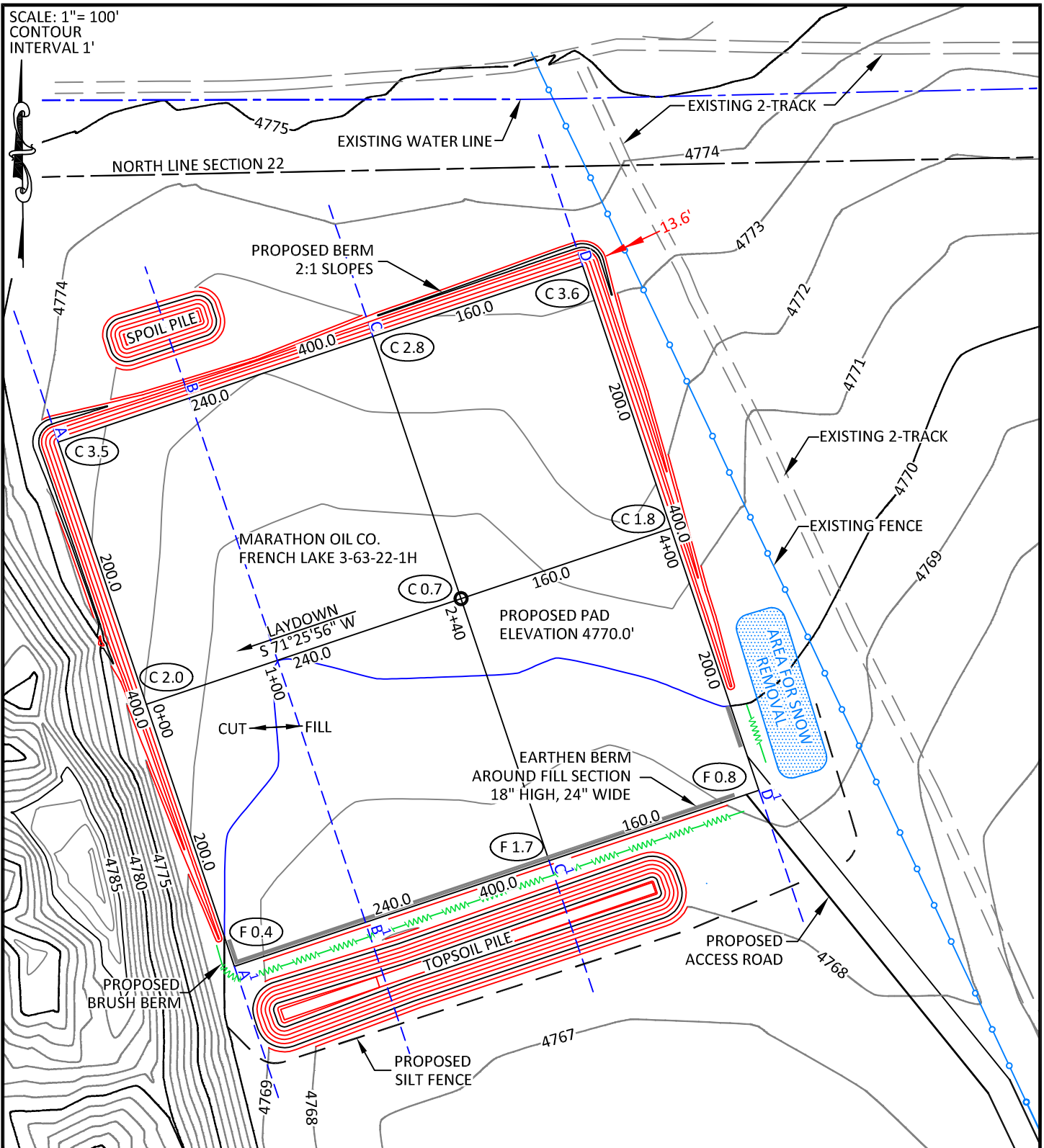
MARATHON OIL COMPANY
PO BOX 3128, HOUSTON TX, 77253
5555 SAN FELIPE, HOUSTON TX, 77056

PRODUCTION FACILITIES

SCALE: 1"=60'
DATE: 2/8/2012

EXHIBIT "L"
SHEET 11 OF 14

SCALE: 1"= 100'
CONTOUR
INTERVAL 1'



CONFIDENTIALITY NOTES:

The information contained in this plat is legally privileged and confidential information intended only for the use of the recipients. If you are not the intended recipients, you are hereby notified that any use, dissemination, distribution or copying of this information is strictly prohibited.



**WILLIAM H. SMITH
& ASSOCIATES P.C.**

SURVEYING CONSULTANTS
550 EAST SECOND NORTH PHONE: 307-875-3638
GREEN RIVER, WY 307-875-3639
www.whsmithpc.com

DRAWN BY: BW

CHECKED BY: RAW

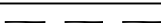
PROJECT NO: 363221H

JOB NO: 2011001

REVISIONS: 2/23/2012 RELOCATE ACCESS ROAD

LEGEND

SILT FENCE



BRUSH BERM



EXISTING FENCE



LOCATION:

FRENCH LAKE
3-63-22-1H
WITHIN THE NW/4
NW/4 SECTION 22,
T 3 N, R 63 W,
6TH PM.
WELD COUNTY,
COLORADO

MARATHON OIL COMPANY
PO BOX 3128, HOUSTON TX, 77253
5555 SAN FELIPE, HOUSTON TX, 77056

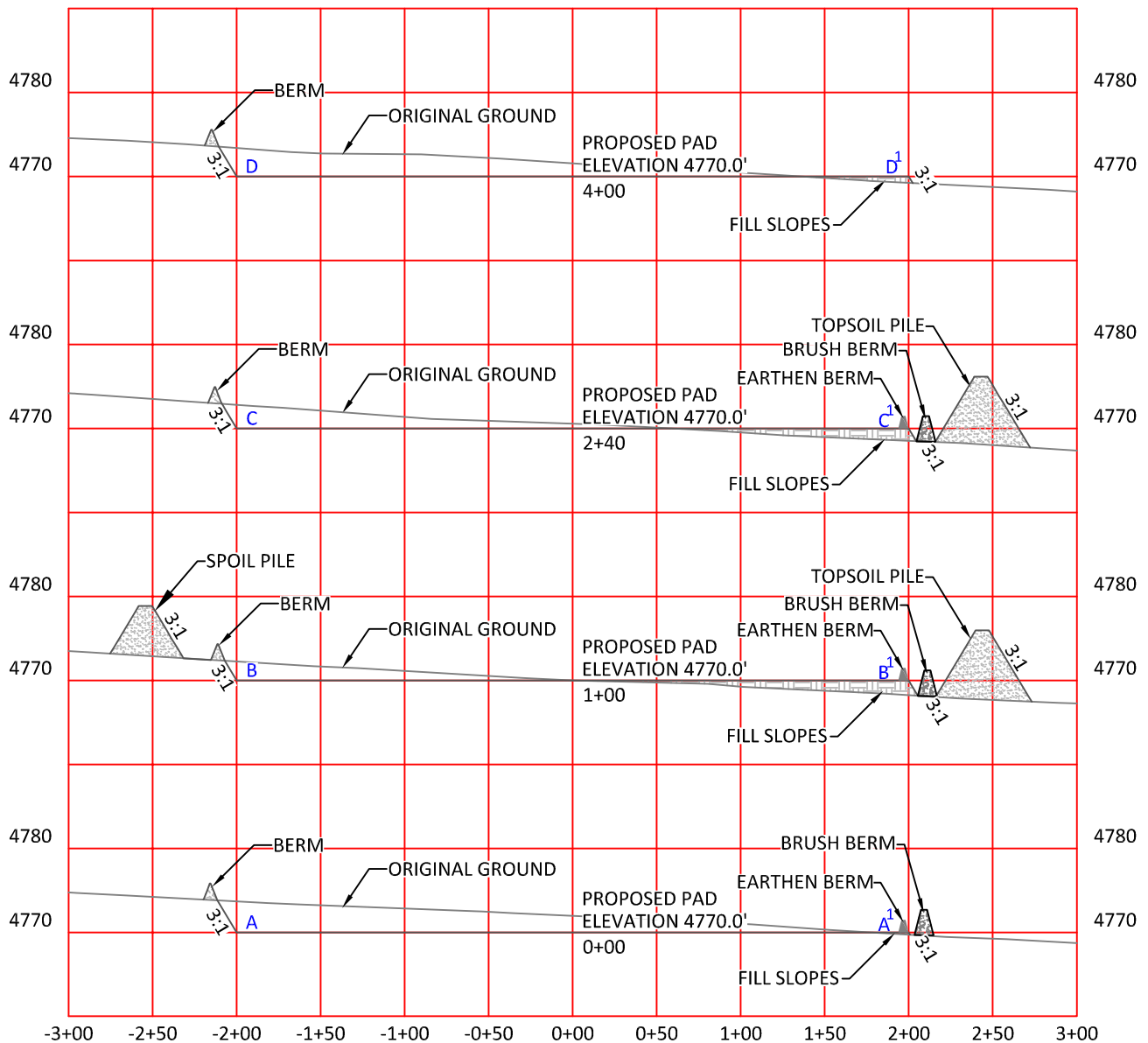
**STORM WATER
PREVENTION PLAN**

SCALE: AS NOTED

EXHIBIT "M"

DATE: 2/8/2012

SHEET 12 of 14



HORIZONTAL SCALE: 1"=100'
VERTICAL SCALE: 1"=20'



**WILLIAM H. SMITH
& ASSOCIATES P.C.**
SURVEYING CONSULTANTS

550 EAST SECOND NORTH PHONE: 307-875-3638
GREEN RIVER, WY 307-875-3639
www.whsmithpc.com

DRAWN BY: BW CHECKED BY: RAW
PROJECT NO: 363221H JOB NO: 2011001
REVISIONS: 2/23/2012 RELOCATE ACCESS ROAD

CONFIDENTIALITY NOTES:

The information contained in this plat is legally privileged and confidential information intended only for the use of the recipients. If you are not the intended recipients, you are hereby notified that any use, dissemination, distribution or copying of this information is strictly prohibited.

LOCATION:

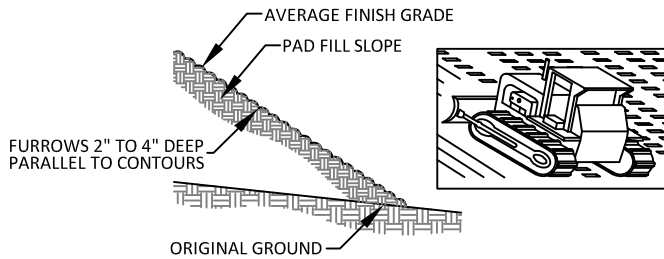
FRENCH LAKE
3-63-22-1H
WITHIN THE NW/4
NW/4 SECTION 22,
T 3 N, R 63 W,
6TH PM.
WELD COUNTY,
COLORADO

MARATHON OIL COMPANY
PO BOX 3128, HOUSTON TX, 77253
5555 SAN FELIPE, HOUSTON TX, 77056

**STORM WATER PREVENTION
CROSS SECTIONS**

SCALE: AS NOTED EXHIBIT "N"
DATE: 2/8/2012 SHEET 13 of 14

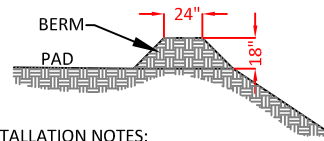
A. FILL SLOPE TRACKING DETAILS



INSTALLATION NOTES:

1. DISTURBED SURFACES SHALL BE ROUGHENED USING RIPPING OR TILLING EQUIPMENT ON THE CONTOURS OR TRACKING UP AND DOWN THE SLOPE USING EQUIPMENT TREADS

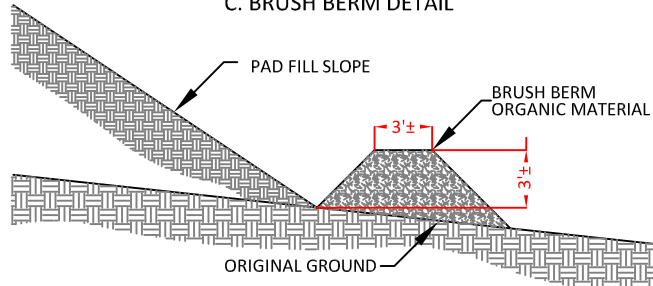
B. EARTHEN BERM DETAIL



INSTALLATION NOTES:

1. BERM SHALL BE CONSTRUCTED OF WELL COMPACTED GRANULAR MATERIAL.
2. BERM SHALL BE CONSTRUCTED ON THE PERIMETER OF THE PAD IN ALL AREAS THAT COULD RECEIVE STORMWATER RUNOFF.
3. DIMENSIONS ARE APPROXIMATE. FIELD CONDITIONS WILL DETERMINE ACTUAL DIMENSIONS OF STRUCTURE.

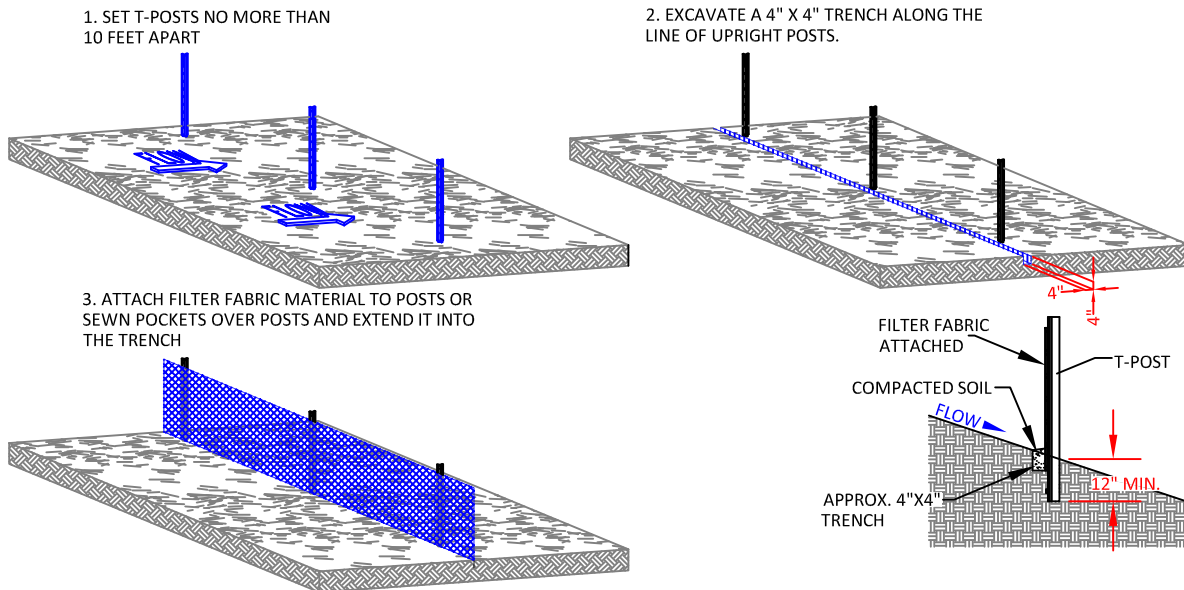
C. BRUSH BERM DETAIL



INSTALLATION NOTES:

1. BERM TO BE CONSTRUCTED AFTER SITE HAS BEEN GRUBBED PRIOR TO PAD CONSTRUCTION.
2. ONSITE ORGANIC MATERIAL TO BE PUSHED INTO BERM ON EDGE PERIMETER OF FILL SLOPE IN A MANNER NOT TO CREATE ADDITIONAL DISTURBANCE BEYOND THE CATCH LINE.
3. BERM TO BE COMPACTED WITH FRONT END LOADER BUCKET OR SIMILAR METHOD TO ACHIEVE ADEQUATE COMPACTION.

D. SILT FENCE DETAILS



CONFIDENTIALITY NOTES:

The information contained in this plat is legally privileged and confidential information intended only for the use of the recipients. If you are not the intended recipients, you are hereby notified that any use, dissemination, distribution or copying of this information is strictly prohibited.



**WILLIAM H. SMITH
& ASSOCIATES P.C.**
SURVEYING CONSULTANTS

550 EAST SECOND NORTH PHONE: 307-875-3638
GREEN RIVER, WY 307-875-3639
www.whsmithpc.com

DRAWN BY: BW

CHECKED BY: RAW

PROJECT NO: 363221H

JOB NO: 2011001

REVISIONS: 2/23/2012 RELOCATE ACCESS ROAD

USED ON THIS SITE

A: EARTHEN BERM AT TOP OF SLOPE
AROUND FILL SECTIONS

B: BRUSH BERM AT TOE OF SLOPE
AROUND FILL SECTIONS

C: SILT FENCE

LOCATION:

FRENCH LAKE
3-63-22-1H
WITHIN THE NW/4
NW/4 SECTION 22,
T 3 N, R 63 W,
6TH PM.
WELD COUNTY,
COLORADO

MARATHON OIL COMPANY
PO BOX 3128, HOUSTON TX, 77253
5555 SAN FELIPE, HOUSTON TX, 77056

STORM WATER PREVENTION DETAILS

SCALE: NOT TO SCALE

EXHIBIT "O"

DATE: 2/8/2012

SHEET 14 of 14