

CONFIDENTIALITY NOTES:

The information contained in this plat is legally privileged and confidential information intended only for the use of the recipients. If you are not the intended recipients, you are hereby notified that any use, dissemination, distribution or copying of this information is strictly prohibited.



**WILLIAM H. SMITH
& ASSOCIATES P.C.**

SURVEYING CONSULTANTS
550 EAST SECOND NORTH PHONE: 307-875-3638
GREEN RIVER, WY 307-875-3639
www.whsmithpc.com

DRAWN BY: BW

CHECKED BY: RAW

PROJECT NO: 363221H

JOB NO: 2011001

REVISIONS: 2/23/2012 RELOCATE ACCESS ROAD

LEGEND

PROPOSED ACCESS ————
EXISTING 2-TRACK ————
EXISTING ROAD ————
1/16TH LINE ————
1/4 LINE ————
SECTION LINE ————
UPGRADED ROAD ————

LOCATION:

FRENCH LAKE
3-63-22-1H
WITHIN THE NW/4
NW/4 SECTION 22,
T 3 N, R 63 W,
6TH PM.
WELD COUNTY,
COLORADO

MARATHON OIL COMPANY
PO BOX 3128, HOUSTON TX, 77253
5555 SAN FELIPE, HOUSTON TX, 77056

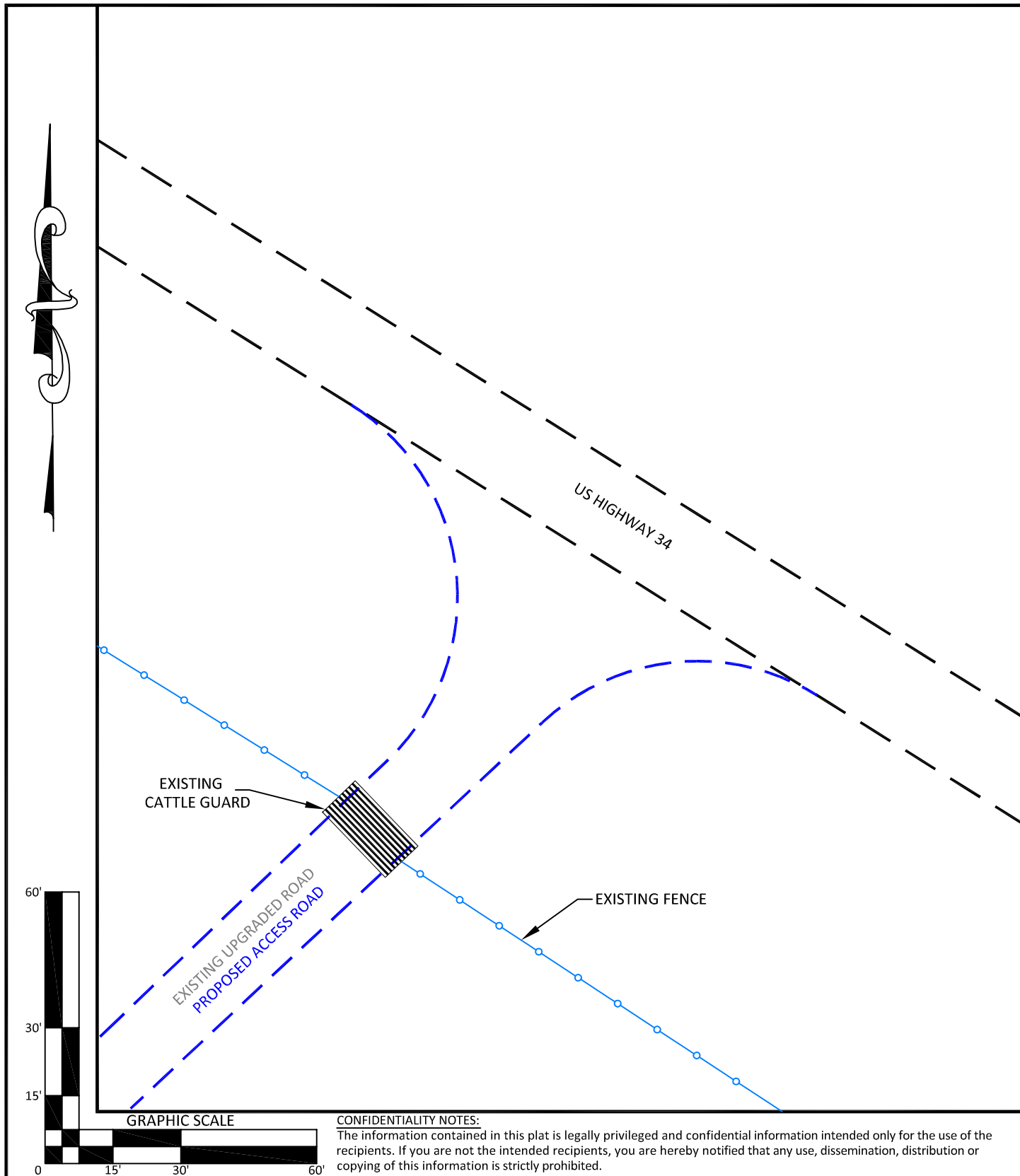
ACCESS ROAD MAP





SCALE: 1"=6000'

EXHIBIT "E"

DATE: 2/8/2012

SHEET 4 OF 14



	WILLIAM H. SMITH & ASSOCIATES P.C.		
	SURVEYING CONSULTANTS		
	550 EAST SECOND NORTH PHONE: 307-875-3638 GREEN RIVER, WY 307-875-3639		
	www.whsmithpc.com		
DRAWN BY: BW		CHECKED BY: RAW	
PROJECT NO: 363221H		JOB NO: 2011001	
REVISIONS: 2/23/2012 RELOCATE ACCESS ROAD			
		LEGEND	
ACCESS ROAD			
EXISTING ROAD			
EXISTING FENCE			
		LOCATION:	
		FRENCH LAKE 3-63-22-1H WITHIN THE NW/4 NW/4 SECTION 22, T 3 N, R 63 W, 6TH PM. WELD COUNTY, COLORADO	
		MARATHON OIL COMPANY PO BOX 3128, HOUSTON TX, 77253 5555 SAN FELIPE, HOUSTON TX, 77056	
		ACCESS ROAD ENTRANCE	
		SCALE: 1"=30'	EXHIBIT "A"
		DATE: 2/8/2012	SHEET 1 OF 1