

HALLIBURTON

HILCORP ENERGY

**State of Colorado AB #1
HOLSTER
Adams County , Colorado**

Recement Service

Job Site Documents

Sqaceze job

The Road to Excellence Starts with Safety

Sold To #: 302789		Ship To #: 2889770		Quote #:		Sales Order #: 9050005	
Customer: HILCORP ENERGY				Customer Rep: CHANDLER, GARY			
Well Name: State of Colorado			Well #: AB #1		API/UWI #: 05-001-06455		
Field: HOLSTER		City (SAP): COMMERCE CITY		County/Parish: Adams		State: Colorado	
Lat: N 39.876 deg. OR N 39 deg. 52 min. 34.756 secs.				Long: W 104.774 deg. OR W -105 deg. 13 min. 33.096 secs.			
Job Purpose: Recement Service							
Well Type: Development Well				Job Type: Recement Service			
Sales Person: FLING, MATTHEW				Srcv Supervisor: SNYDER, JONATHAN MBU ID Emp #: 435616			

Job Personnel

HES Emp Name	Exp Hrs	Emp #	HES Emp Name	Exp Hrs	Emp #	HES Emp Name	Exp Hrs	Emp #
CONGDON, RICHARD S.	3	320306	HOLLOWAY, DUSTIN Craig	3	504032	SANSONI, NICHOLAS Sterling J	3	502962
SNYDER, JONATHAN Leroy	3	435616	WILEY, JAMES A	3	440080			

Equipment

HES Unit #	Distance-1 way	HES Unit #	Distance-1 way	HES Unit #	Distance-1 way	HES Unit #	Distance-1 way
10948695	45 mile	11036295C	45 mile	11362287C	45 mile		

Job Hours

Date	On Location Hours	Operating Hours	Date	On Location Hours	Operating Hours	Date	On Location Hours	Operating Hours
11/8/2011	3	1						

TOTAL Total is the sum of each column separately

Job

Job Times

Formation Name	Formation Depth (MD)	Top	Bottom	Called Out	Date	Time	Time Zone
Form Type			BHST	On Location	08 - Nov - 2011	00:00	MST
Job depth MD	1105. ft		Job Depth TVD	Job Started			
Water Depth			Wk Ht Above Floor	Job Completed			
Perforation Depth (MD)	From		To	Departed Loc			

Well Data

Description	New / Used	Max pressure psig	Size in	ID in	Weight lbm/ft	Thread	Grade	Top MD ft	Bottom MD ft	Top TVD ft	Bottom TVD ft
Open Hole				9.				352.	8708.	.	.
Production Casing	Unknown		5.5	5.012	14.		J-55	.	8708.	.	.
Surface Casing	Unknown		8.625	8.097	24.		J-55	.	352.	.	.
Tubing	Unknown		2.375	1.995	4.7			.	1048.	.	.

Tools and Accessories

Type	Size	Qty	Make	Depth	Type	Size	Qty	Make	Depth	Type	Size	Qty	Make
Guide Shoe					Packer					Top Plug			
Float Shoe					Bridge Plug					Bottom Plug			
Float Collar					Retainer					SSR plug set			
Insert Float										Plug Container			
Stage Tool										Centralizers			

Miscellaneous Materials

Gelling Agt	Conc	Surfactant	Conc	Acid Type	Qty	Conc	%
Treatment Fld	Conc	Inhibitor	Conc	Sand Type	Size		

Fluid Data

Stage/Plug #: 1

Fluid #	Stage Type	Fluid Name	Qty	Qty uom	Mixing Density lbm/gal	Yield ft ³ /sk	Mix Fluid Gal/sk	Rate bbl/min	Total Mix Fluid Gal/sk
1	ClayFix III Water Spacer		10	bbl	8.33	.0	.0	2.0	
2	MUD FLUSH III	MUD FLUSH III - SBM (528788)	12	bbl	8.4	.0	.0	2.0	
3	ClayFix III Water Spacer		10	bbl	8.33	.0	.0	2.0	
4	Surf. Varicem 13#	SURF. VARICEM (TM) CEMENT (452009)	150	sacks	13.	1.71	8.84	2.0	8.84
8.84 Gal		FRESH WATER							
Calculated Values		Pressures		Volumes					
Displacement	3.5	Shut In: Instant		Lost Returns		Cement Slurry	46	Pad	
Top Of Cement		5 Min		Cement Returns	0	Actual Displacement	3.5	Treatment	
Frac Gradient		15 Min		Spacers	32	Load and Breakdown		Total Job	
Rates									
Circulating	2	Mixing	2.5	Displacement	2.5	Avg. Job	2.2		
Cement Left In Pipe	Amount	258 ft	Reason	Customer Request					
Frac Ring # 1 @	ID	Frac ring # 2 @	ID	Frac Ring # 3 @	ID	Frac Ring # 4 @	ID		
The Information Stated Herein Is Correct				Customer Representative Signature					

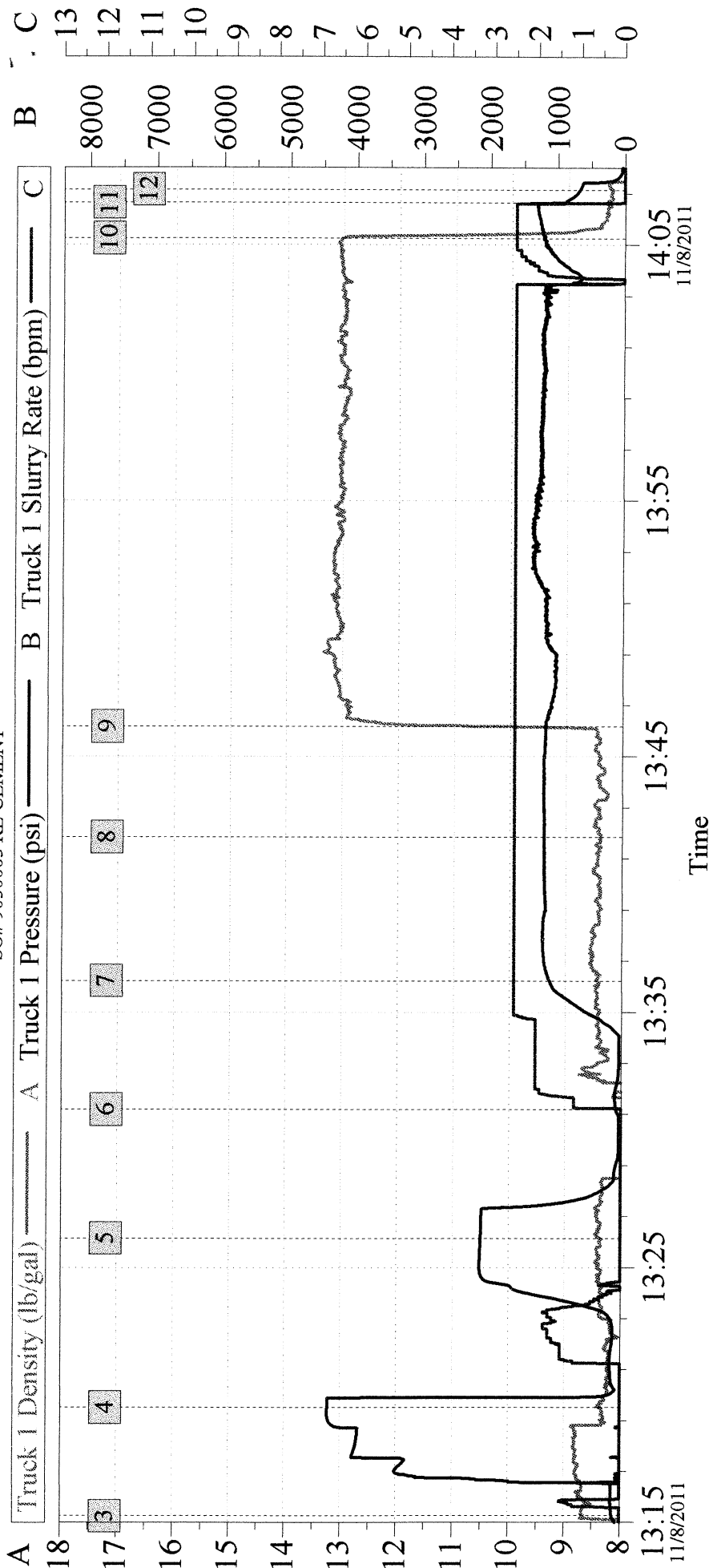
The Road to Excellence Starts with Safety

Sold To #: 302789		Ship To #: 2889770		Quote #:		Sales Order #: 9050005	
Customer: HILCORP ENERGY				Customer Rep: CHANDLER, GARY			
Well Name: State of Colorado			Well #: AB #1		API/UWI #: 05-001-06455		
Field: HOLSTER		City (SAP): COMMERCE CITY		County/Parish: Adams		State: Colorado	
Legal Description:							
Lat: N 39.876 deg. OR N 39 deg. 52 min. 34.756 secs.				Long: W 104.774 deg. OR W -105 deg. 13 min. 33.096 secs.			
Contractor:			Rig/Platform Name/Num:				
Job Purpose: Recement Service					Ticket Amount:		
Well Type: Development Well			Job Type: Recement Service				
Sales Person: FLING, MATTHEW			Srvc Supervisor: SNYDER, JONATHAN		MBU ID Emp #: 435616		

Activity Description	Date/Time	Cht #	Rate bbl/min	Volume bbl		Pressure psig		Comments
				Stage	Total	Tubing	Casing	
Arrive at Location from Service Center	11/08/2011 11:45							Conducted Hazard Hunt. No specific Hazards Found.
Pre-Job Safety Meeting	11/08/2011 13:00							Held Safety Meeting with all third party personell.
Test Lines	11/08/2011 13:19					4390.0		Tested HES Pumps and Lines
Test Tool	11/08/2011 13:26			4	4	2102.0		Tested Tubing. Took 4 bbls to load tubing
Pump Spacer 1	11/08/2011 13:31		2.5	10	14	1170.0		Established Rate with First Spacer. Fresh water with 2.5 Gal/Mgal Clayfix III added
Pump Spacer 2	11/08/2011 13:36		2.5	12	26	1185.0		Fresh Water with 40# Mudflush III added
Pump Spacer 1	11/08/2011 13:41		2.5	10	36	1170.0		Fresh water with 2.5 Gal/Mgal Clayfix III added
Pump Cement	11/08/2011 13:46		2.5	46	82	1157.0		150 Sacks 13ppg Surface Varicem mixed with Fresh water.
Pump Displacement	11/08/2011 14:05		2.5	4	86	1205.0		Fresh Water, Leaving 1 BBL cement in Tubing
Shutdown	11/08/2011 14:06					848.0		ISIP was 848 psi
End Job	11/08/2011 14:07							No Cement returned to surface

HILCORP ENERGY STATE OF COLORADO AB #1

SO# 9050005 RE-CEMENT



Global Event Log

Intersection	TID	T1P	Intersection	TID	T1P
3 Start Job	13:15:16	8.640	4 Test Lines	13:19:31	8.379
5 Test Tubing	13:26:09	8.358	6 Clayfix III Water	13:31:11	-0.100
7 Mudflush III	13:36:13	8.430	8 Clayfix III Water	13:41:51	8.380
9 13ppg Surf. Varicem	13:46:11	9.930	10 Fresh Water	14:05:15	13.02
11 Shutdown	14:06:39	8.302	12 End Job	14:07:09	8.213
					675.6

Customer:	HILCORP ENERGY	Job Date:	08-Nov-2011	Sales Order #:	9050005
Well Description:	STATE OF COLORADO AB #1	UWI:	05-001-06455-00		
	SERVICE SUPERVISOR JONATHAN SNYDER		SERVICE OPERATOR JAMES WILEY		