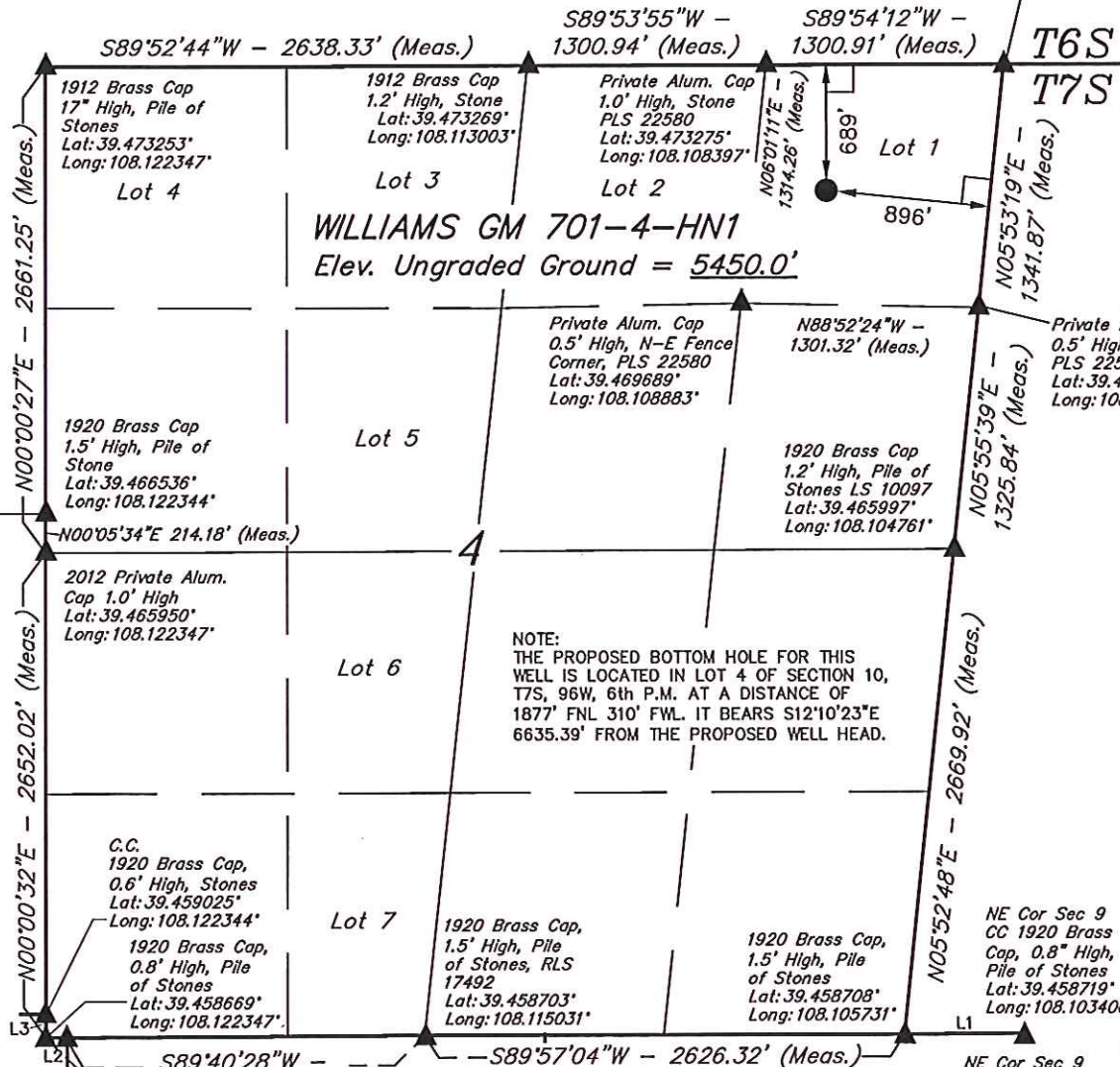


T7S, R96W, 6th P.M.

WPX Energy Rocky Mountain, LLC

Well location, WILLIAMS GM 701-4-HN1 (SURFACE LOCATION), located as shown in Lot 1 of Section 4, T7S, R96W, 6th P.M., Garfield County, Colorado.

1912 Brass Cap  
1.0' High, N-S  
Fenceline, LS 10097  
Lat: 39.473281°  
Long: 108.103789°



### BASIS OF ELEVATION

SPOT ELEVATION AT THE NORTHWEST CORNER OF SECTION 30, T5S, R95W, 6th P.M. TAKEN FROM THE FORKED GULCH QUADRANGLE, COLORADO, GARFIELD COUNTY, 7.5 MINUTE SERIES (TOPOGRAPHICAL MAP) PUBLISHED BY THE UNITED STATES DEPARTMENT OF THE INTERIOR, GEOLOGICAL SURVEY. SAID ELEVATION IS MARKED AS BEING 5966 FEET.

### BASIS OF BEARINGS

BASIS OF BEARINGS IS A G.P.S. OBSERVATION.

NOTE:  
SEE CURRENT FOOTAGE PLAT #6 FOR  
EXISTING IMPROVEMENT WITHIN 400'  
OF THE PROPOSED WELL HEAD.



PLAT #1



### CERTIFICATE

THIS IS TO CERTIFY THAT THE ABOVE PLAT WAS PREPARED AND LOCATION AS SHOWN WAS STAKED ON THE GROUND FROM FIELD NOTES OF ACTUAL SURVEYS MADE BY ME OR UNDER MY SUPERVISION AND THAT THE SAME ARE TRUE AND CORRECT TO THE BEST OF MY KNOWLEDGE AND BELIEF.

REGISTERED LAND SURVEYOR  
REGISTRATION NO. 17492  
STATE OF COLORADO  
02-27-2012

UINTAH ENGINEERING & LAND SURVEYING

85 SOUTH 200 EAST - VERNAL, UTAH 84078

(435) 789-1017

### LEGEND:

- └─┘ = 90° SYMBOL
- = PROPOSED WELL HEAD.
- ▲ = SECTION CORNERS LOCATED.

LINE TABLE		
LINE	BEARING	LENGTH
L1	S89°38'53\"W	656.44'
L2	N89°51'16\"W	115.68'
L3	N00°02'55\"E	129.07'

NE Cor Sec 9  
CC 1920 Brass  
Cap, 0.8\" High,  
Pile of Stones  
Lat: 39.458719°  
Long: 108.103406°

PDOP = 1.7

NAD 83 (SURFACE LOCATION)  
LATITUDE = 39°28'16.99\" (39.471386)  
LONGITUDE = 108°06'26.03\" (108.107231)  
STATE PLANE-(COLO. CENTRAL-NAD 83)  
N = 1607142.192  
E = 2264081.932

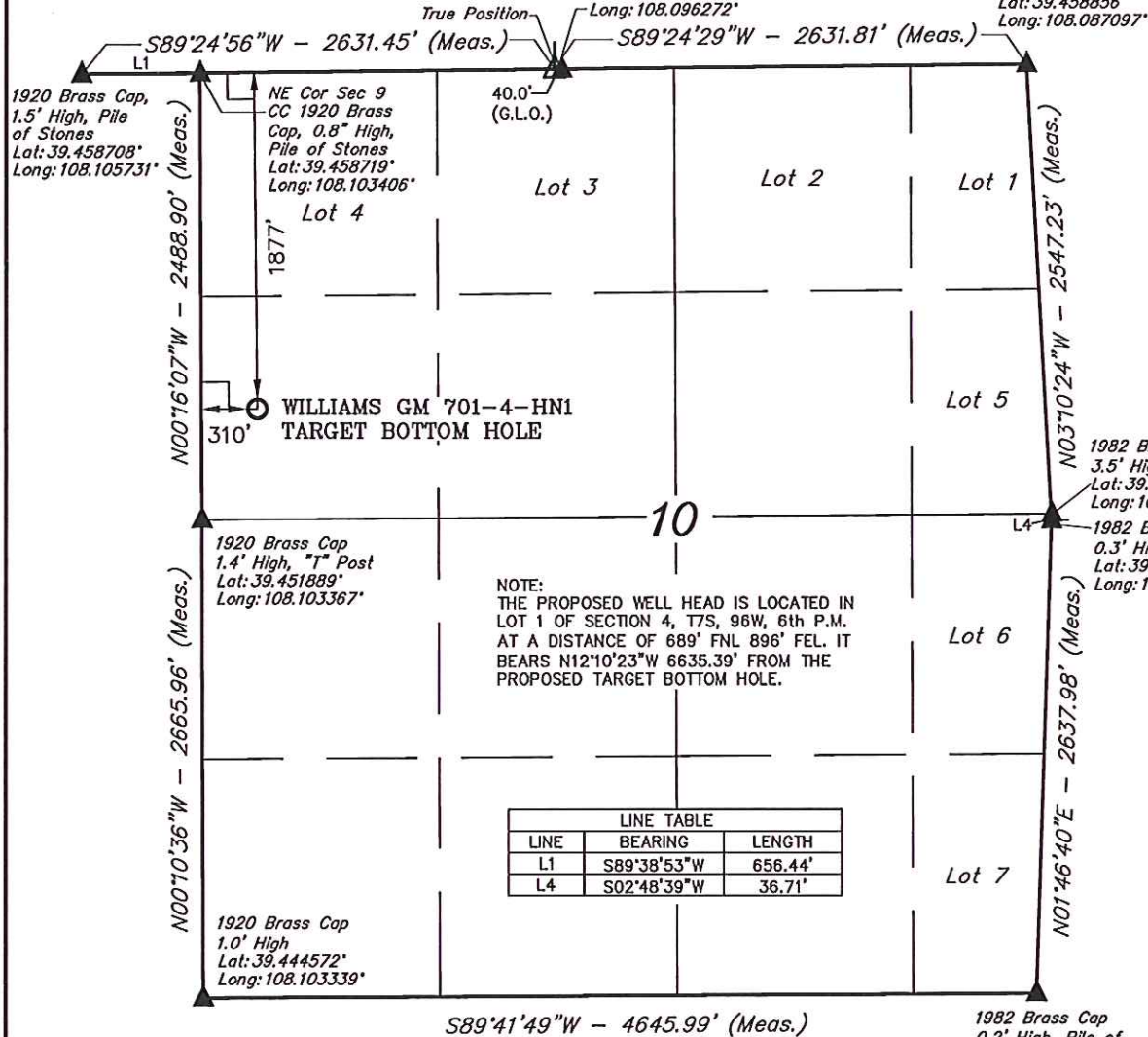
SCALE 1\" = 1000'		DATE SURVEYED: 09-30-11	DATE DRAWN: 01-30-12
PARTY B.J. T.M. D.R.B.		REFERENCES G.L.O. PLAT	
WEATHER COLD		FILE WPX Energy Rocky Mountain, LLC	



T7S, R96W, 6th P.M.

W.C.  
1981 Priv. Brass  
Cap, 0.5' High,  
Stones, "T" Post  
Lat: 39.458783°  
Long: 108.096272°

1982 Brass Cap  
0.5' High  
Lat: 39.458856°  
Long: 108.087097°



NOTE:  
THE PROPOSED WELL HEAD IS LOCATED IN  
LOT 1 OF SECTION 4, T7S, 96W, 6th P.M.  
AT A DISTANCE OF 689' FNL 896' FEL. IT  
BEARS N12°10'23\"W 6635.39' FROM THE  
PROPOSED TARGET BOTTOM HOLE.

LINE TABLE		
LINE	BEARING	LENGTH
L1	S89°38'53\"W	656.44'
L4	S02°48'39\"W	36.71'

WPX Energy Rocky Mountain, LLC

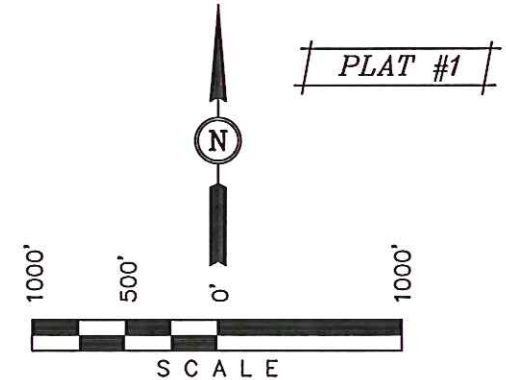
Well location, WILLIAMS GM 701-4-HN1 (TARGET  
BOTTOM HOLE), located as shown in the SW 1/4  
NW 1/4 of Section 10, T7S, R96W, 6th P.M.,  
Garfield County, Colorado.

BASIS OF ELEVATION

SPOT ELEVATION AT THE NORTHWEST CORNER OF SECTION  
30, T5S, R95W, 6th P.M. TAKEN FROM THE FORKED GULCH  
QUADRANGLE, COLORADO, GARFIELD COUNTY, 7.5 MINUTE  
SERIES (TOPOGRAPHICAL MAP) PUBLISHED BY THE UNITED  
STATES DEPARTMENT OF THE INTERIOR, GEOLOGICAL SURVEY.  
SAID ELEVATION IS MARKED AS BEING 5966 FEET.

BASIS OF BEARINGS

BASIS OF BEARINGS IS A G.P.S. OBSERVATION.



CERTIFICATE

THIS IS TO CERTIFY THAT THE ABOVE PLAT WAS PREPARED AND  
LOCATION AS SHOWN WAS STAKED ON THE GROUND FROM FIELD  
NOTES OF ACTUAL SURVEYS MADE BY ME OR UNDER MY  
SUPERVISION AND THAT THE SAME ARE TRUE AND CORRECT TO  
THE BEST OF MY KNOWLEDGE AND BELIEF.

REGISTERED LAND SURVEYOR  
REGISTRATION NO. 17492  
STATE OF COLORADO  
02-27-2012

UINTAH ENGINEERING & LAND SURVEYING

85 SOUTH 200 EAST - VERNAL, UTAH 84078

(435) 789-1017

LEGEND:

- └─┘ = 90° SYMBOL
- = PROPOSED WELL HEAD.
- ▲ = SECTION CORNERS LOCATED.

NAD 83 (TARGET BOTTOM HOLE)  
LATITUDE = 39°27'12.90\" (39.453583)  
LONGITUDE = 108°08'08.20\" (108.102278)  
STATE PLANE-(COLO. CENTRAL-NAD 83)  
N = 1600620.591  
E = 2265293.914

SCALE 1" = 1000'	DATE SURVEYED: 09-30-11	DATE DRAWN: 01-30-12
PARTY B.J. T.M. D.R.B.	REFERENCES G.L.O. PLAT	
WEATHER COLD	FILE WPX Energy Rocky Mountain, LLC	