

1625 Broadway
Suite 2000
Denver, CO 80202

Tel: 303.228.4000
Fax: 303.228.4280
www.nobleenergyinc.com



March 2, 2012

Colorado Oil and Gas Conservation Commission
The Chancery Building
1120 Lincoln Street, Suite 801
Denver, CO 80203
Attn: Mr. Thom Kerr, Acting Director

RE: Herbst C27-31D
Codell/Niobrara New Drill
Township 4 North, Range 64 West, 6th P.M.
Section 27: NW/4SW/4: 2072' FSL & 664' FWL (Surface Location)
Section 28: SE/4NE/4: 1425' FNL & 75' FEL (Bottom Hole Location)
Weld County, Colorado

Mr. Kerr:

Noble Energy, Inc. ("NEI") is planning to drill the captioned boundary well in accordance with the provisions of COGCC Rule 318A.e.

NEI's proposed wellbore spacing unit consists of the W/2NW/4 of Sec 27, E/2NE/4 of Sec 28., T4N, R64W, creating a 160-acre wellbore spacing unit. NEI is the only owner within the proposed wellbore spacing unit, therefore NEI hereby attests that no notice letters are required under COGCC Rule 318A(I).e.(6).

Enclosed are copies of the following documents to assist you in your review and approval of NEI's proposed APD for the captioned well:

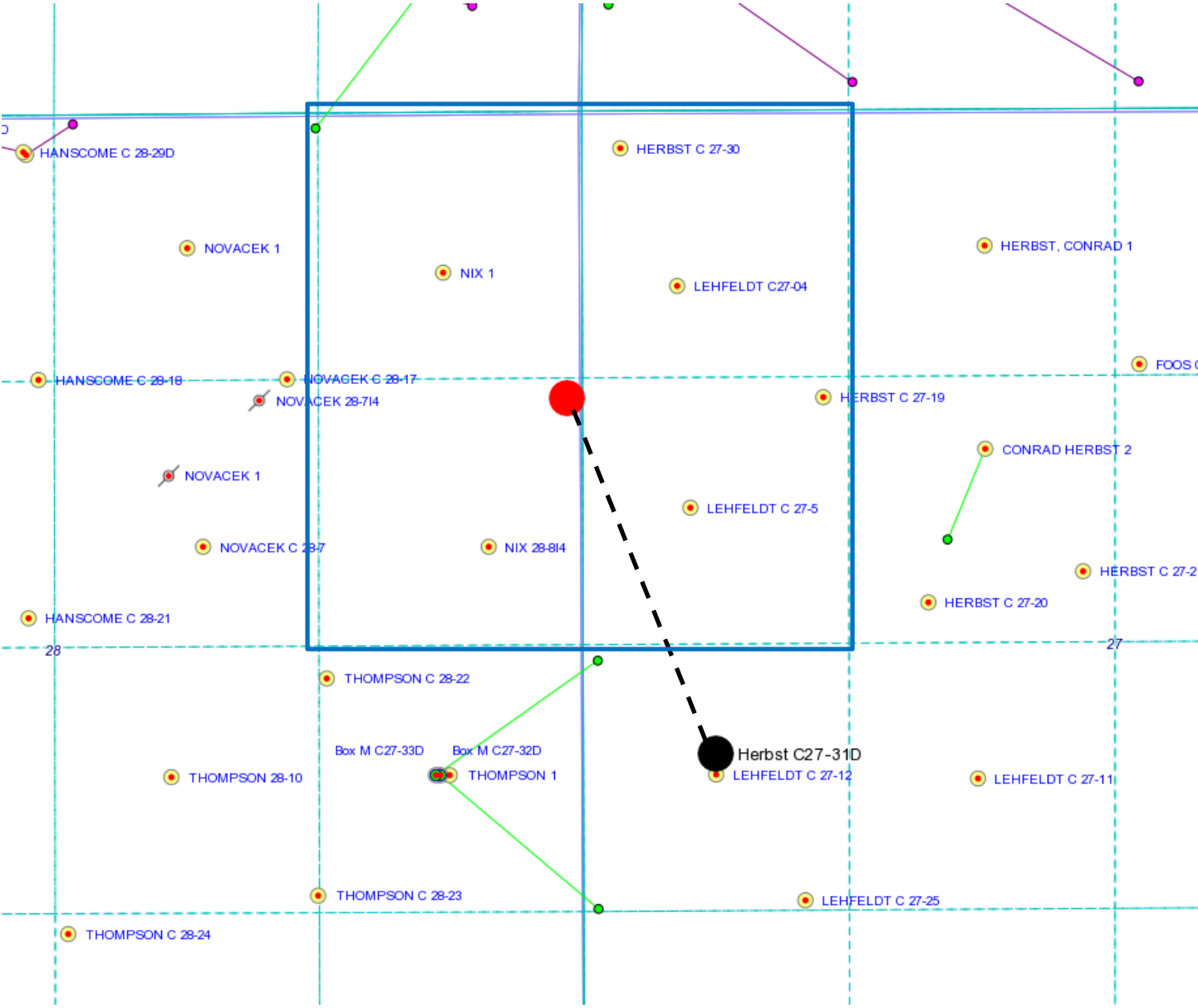
- Map & plat illustrating proposed wellbore spacing unit.

Thank you for your attention to the enclosed. NEI respectfully requests that the COGCC review the enclosed information and approve the Application for Permit to Drill the captioned well.

Sincerely,

Justin Garrett
Regulatory Specialist
Noble Energy Inc.

Herbst C27-31D
Noble Energy, Inc
SE/4NE/4 Section 28, Township 4 North, Range 64 West



Legend



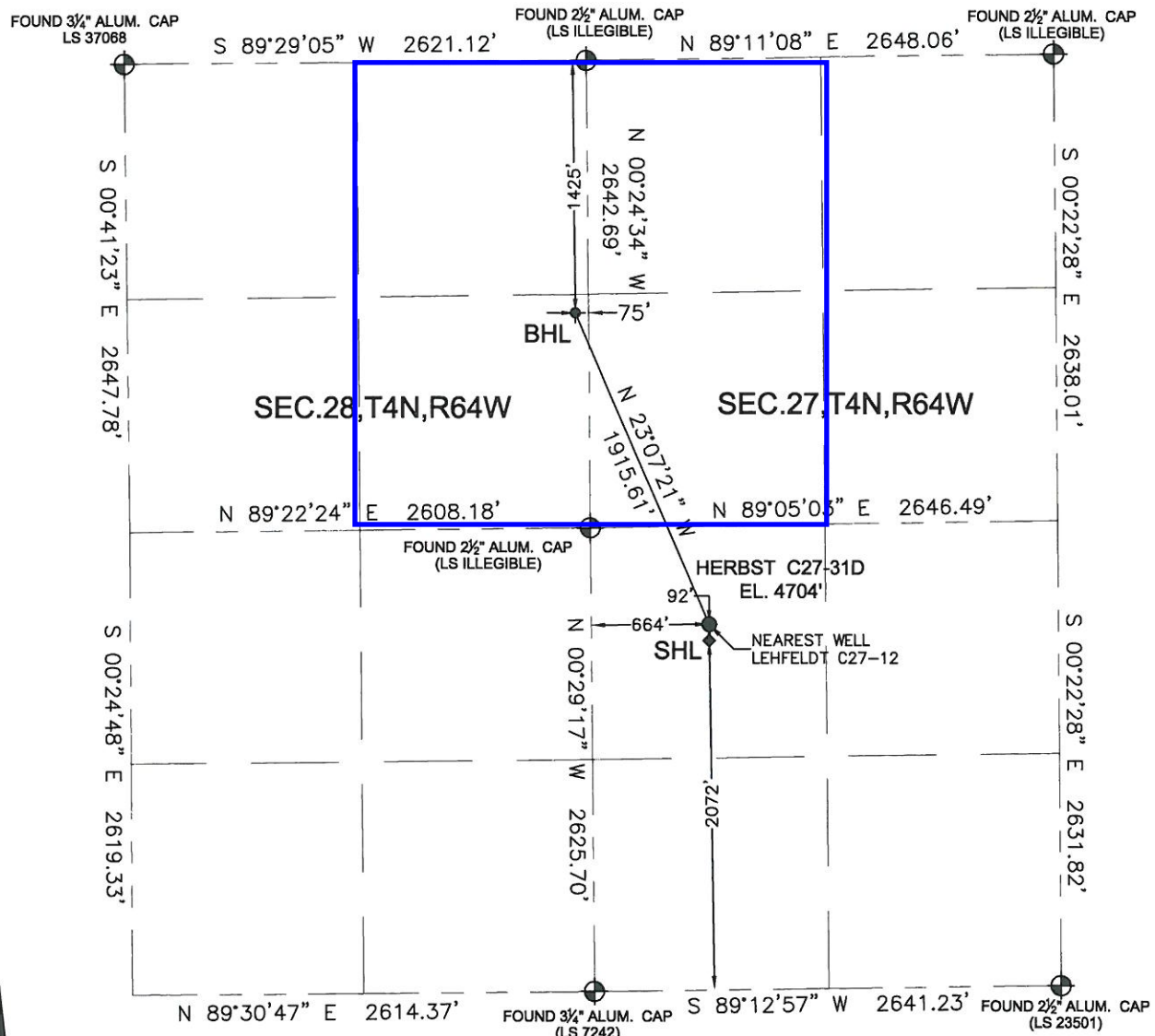
Proposed 160 acre spacing unit



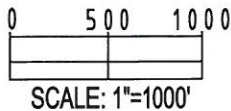
Bottom Hole Location

WELL LOCATION CERTIFICATE

THIS MAP DOES NOT REPRESENT A BOUNDARY SURVEY

SECTION: 27, 28
TOWNSHIP: 4N
RANGE: 64W

In accordance with a request from Brian DeRose with Noble Energy Inc., Petroleum Field Services, LLC has determined the surface location of the HERBST C27-31D to be 2072' from the SOUTH line and 664' from the WEST line and the bottom hole to be 1425' from the NORTH line and 75' from the EAST line as measured at right angles from the section line of Section 28, Township 4 North, Range 64 West of the Sixth Principal Meridian, County of Weld, State of Colorado.



I hereby state that this Well Location Certificate was prepared by me, or under my direct supervision, that the fieldwork was completed on 10/04/11, for and on behalf of Noble Energy Inc., that this is not a Land Survey Plat or an Improvement Survey Plat, and that it is not to be relied upon for establishment of fence, building, or other future improvement lines.

SURFACE LOCATION:
LATITUDE: 40.28190°N
LONGITUDE: 104.54410°W
PDOP: 2.2
ELEV: 4704'
1/4 1/4 NW 1/4 SW 1/4
NEAREST PROPERTY LINE: 580' Southeast

BOTTOM HOLE:
LATITUDE: 40.28676°N
LONGITUDE: 104.54673°W

Note:

- 1) Bearings shown are Grid Bearings of the Colorado State Plane Coordinate System, North Zone, North American Datum 1983/2007. The lineal dimensions as shown herein are grid distances based upon the "U.S. Survey Foot."
- 2) Ground elevations are based on an observed GPS elevation (NAVD 1988 DATUM).
- 3) NEAREST EXISTING WELL: LEHFELDT C27-12 92' S
- 4) IMPROVEMENTS: See LOCATION DRAWING exhibit for all visible improvements within 400' of disturbed area.
- 5) SURFACE USE: RANGELAND
- 6) INSTRUMENT OPERATOR: CHRIS BOUB

Note:

According to Colorado law, you must commence any legal action based upon any defect in this W.L.C. within three years after you first discover such defect. In no event, may any action based upon any defect in this survey be commenced more than ten years after the date of this certification shown hereon. (13-80-105 C.R.S.)

LEGEND

- = FOUND MONUMENT
- = PROPOSED WELL
- = BOTTOM HOLE
- ◆ = EXISTING WELL



MARK A. HALL, PLS 36073
COLORADO LICENSED PROFESSIONAL LAND SURVEYOR
FOR AND ON BEHALF OF P.F.S., LLC