
OXY GRAND JUNCTION

**CC 697-05-36B
GRAND VALLEY
Garfield County , Colorado**

Cement Surface Casing
13-Jan-2012

Post Job Report

Sold To #: 344034	Ship To #: 344034	Quote #:	Sales Order #: 9107170
Customer: OXY GRAND JUNCTION EBUSINESS		Customer Rep: VILLEGAS, ALEX	
Well Name: CC		Well #: 697-05-36B	API/UWI #: 05-045-20364
Field: GRAND VALLEY	City (SAP): Debeque	County/Parish: Garfield	State: Colorado
Lat: N 39.555 deg. OR N 39 deg. 33 min. 16.2 secs.		Long: W 108.242 deg. OR W -109 deg. 45 min. 27.396 secs.	
Contractor: H&P 353		Rig/Platform Name/Num: H&P 353	
Job Purpose: Cement Surface Casing			
Well Type: Development Well		Job Type: Cement Surface Casing	
Sales Person: HIMES, JEFFREY		Srvs Supervisor: STILLSON, ERIC	MBU ID Emp #: 393789

HES Emp Name	Exp Hrs	Emp #	HES Emp Name	Exp Hrs	Emp #	HES Emp Name	Exp Hrs	Emp #
HARDRICK, RAYMOND Frank	8	391324	STILLSON, ERIC W	8	393789	TRIPLETT, MICHEAL Anthony	8	447908
WEAVER, CARLTON Russell	8	457698						

HES Unit #	Distance-1 way	HES Unit #	Distance-1 way	HES Unit #	Distance-1 way	HES Unit #	Distance-1 way
10567589C	60 mile	10867304	60 mile	10951246	60 mile	10995027	60 mile
10998054	60 mile	4901	60 mile	6543	60 mile		

Date	On Location Hours	Operating Hours	Date	On Location Hours	Operating Hours	Date	On Location Hours	Operating Hours
01-12-12	3	0	01-13-12	9	4			

Job					Job Times			
Formation Name						Date	Time	Time Zone
Formation Depth (MD)	Top		Bottom		Called Out	12 - Jan - 2012	16:00	MST
Form Type			BHST		On Location	12 - Jan - 2012	21:00	MST
Job depth MD	2726. ft		Job Depth TVD	2726. ft	Job Started	13 - Jan - 2012	03:42	MST
Water Depth			Wk Ht Above Floor	3. ft	Job Completed	13 - Jan - 2012	07:12	MST
Perforation Depth (MD)	From		To		Departed Loc	13 - Jan - 2012	09:00	MST

<i>Description</i>	New / Used	Max pressure psig	Size in	ID in	Weight lbm/ft	Thread	Grade	Top MD ft	Bottom MD ft	Top TVD ft	Bottom TVD ft
OPEN HOLE SECTION				14.75				.	2726.		
SURFACE CASING	Unknown		9.625	8.921	36.		J-55	.	2706.		

Description	Qty	Qty uom	Depth	Supplier
PLUG,CMTG,TOP,9 5/8,HWE,8.16 MIN/9.06 MA	1	EA		

Type	Size	Qty	Make	Depth	Type	Size	Qty	Make	Depth	Type	Size	Qty	Make
Guide Shoe					Packer					Top Plug	9.625	1	
Float Shoe					Bridge Plug					Bottom Plug			
Float Collar					Retainer					SSR plug set			
Insert Float										Plug Container	9.625	1	
Stage Tool										Centralizers			

Inoculation Materials										
Gelling Agt	Conc	Surfactant	Conc	Acid Type	Qty	Conc	%			
Treatment Fld	Conc	Inhibitor	Conc	Sand Type	Size	Qty	%			

Fluid Data									
Stage/Plug #: 1									
Fluid #	Stage Type	Fluid Name	Qty	Qty uom	Mixing Density lbm/gal	Yield ft ³ /sk	Mix Fluid Gal/sk	Rate bbl/min	Total Mix Fluid Gal/sk
1	Fresh Water Spacer		20.00	bbl	8.33	.0	.0	4	
2	Gel Water Spacer	SUPER FLUSH 101 - SBM (12199)	20.00	bbl	8.34	.0	.0	4	
3	Fresh Water Spacer		20.00	bbl	8.33	.0	.0	4	
4	Lead Cement	VERSACEM (TM) SYSTEM (452010)	1055.0	sacks	12.3	2.33	12.62	6.0	12.62
		12.62 Gal FRESH WATER							
5	Tail Cement	VERSACEM (TM) SYSTEM (452010)	160.0	sacks	12.8	2.07	10.67	6.0	10.67
		10.67 Gal FRESH WATER							
6	Displacement		200.00	bbl	8.34	.0	.0	6.0	
7	Topout Cement	HALCEM (TM) SYSTEM (452986)		sacks	12.5	1.97	10.96		10.96
		10.96 Gal FRESH WATER							
Calculated Values		Pressures		Volumes					
Displacement	205.7	Shut In: Instant		Lost Returns	437	Cement Slurry	497	Pad	
Top Of Cement	SURFACE	5 Min		Cement Returns	72	Actual Displacement	200	Treatment	
Frac Gradient		15 Min		Spacers	60	Load and Breakdown		Total Job	
Rates									
Circulating	RIG	Mixing	6	Displacement	6	Avg. Job	6		
Cement Left In Pipe	Amount	45 ft	Reason	Shoe Joint					
Frac Ring # 1 @	ID	Frac ring # 2 @	ID	Frac Ring # 3 @	ID	Frac Ring # 4 @	ID		
The Information Stated Herein Is Correct				Customer Representative Signature					

The Road to Excellence Starts with Safety

Sold To #: 344034		Ship To #: 344034		Quote #:		Sales Order #: 9107170	
Customer: OXY GRAND JUNCTION EBUSINESS				Customer Rep: VILLEGAS, ALEX			
Well Name: CC			Well #: 697-05-36B			API/UWI #: 05-045-20364	
Field: GRAND VALLEY		City (SAP): Debeque		County/Parish: Garfield		State: Colorado	
Legal Description:							
Lat: N 39.555 deg. OR N 39 deg. 33 min. 16.2 secs.				Long: W 108.242 deg. OR W -109 deg. 45 min. 27.396 secs.			
Contractor: H&P 353			Rig/Platform Name/Num: H&P 353				
Job Purpose: Cement Surface Casing						Ticket Amount:	
Well Type: Development Well			Job Type: Cement Surface Casing				
Sales Person: HIMES, JEFFREY			Srvc Supervisor: STILLSON, ERIC			MBU ID Emp #: 393789	

Activity Description	Date/Time	Cht #	Rate bbl/min	Volume bbl		Pressure psig		Comments
				Stage	Total	Tubing	Casing	
Call Out	01/12/2012 16:00							9 5/8 SURFACE, OXY, H&P 353, CC 697-05-36B
Pre-Convoy Safety Meeting	01/12/2012 18:30							ENTIRE CREW, OBSERVE ALL SAFE DRIVING PROCEDURES
Arrive At Loc	01/12/2012 21:00							RIG RUNNING CASING.
Assessment Of Location Safety Meeting	01/13/2012 01:00							REVIEWED EMERGENCY PLAN, ASSESSED WORK AREA AND SPOTTED EQUIPMENT.
Pre-Rig Up Safety Meeting	01/13/2012 01:25							ENTIRE CREW, WALKED THROUGH RIG UP LOOKING FOR HAZARDS.
Rig-Up Equipment	01/13/2012 01:30							1 PICK UP, 1 HT400 PUMP TRUCK, 1 660 BULK CEMENT TRUCK, 2 BULK CEMENT SILOS, 1 QUICK LATCH HEAD WITH PLUG.
Pre-Job Safety Meeting	01/13/2012 03:00							ENTIRE CREW, CO REP AND RIG CREW.
Start Job	01/13/2012 03:42							TD 2726 TP 2706 SJ 45 FC 2661 MW 9.4 PPG, 9 5/8 36# CASING IN 14 3/4 HOLE, PARASITE SET AT 2444. YP , PV , TEMP .
Pump Water	01/13/2012 03:43		2	2			230.0	FILL LINES BEFORE TESTING

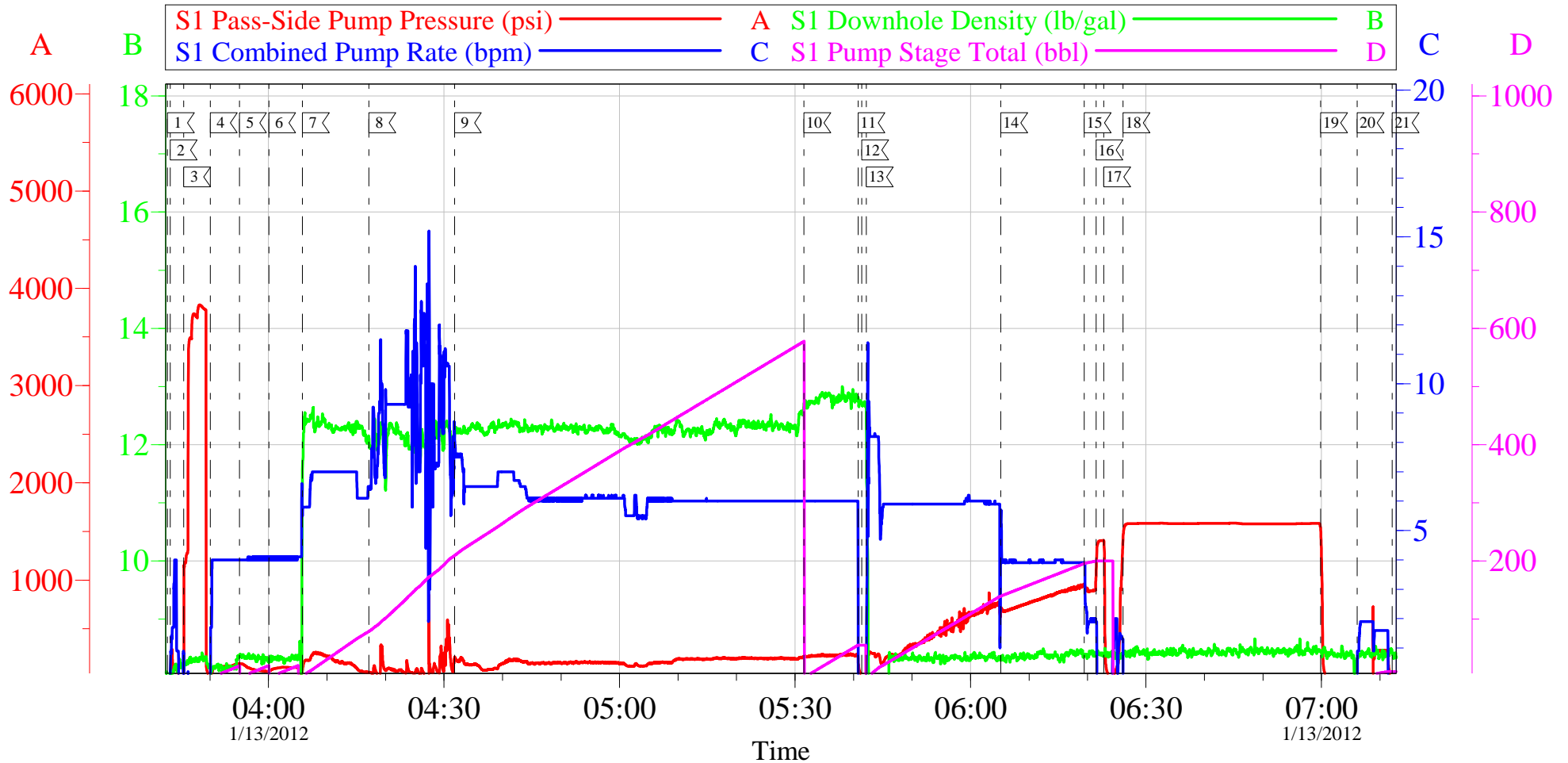
Activity Description	Date/Time	Cht #	Rate bbl/min	Volume bbl		Pressure psig		Comments
				Stage	Total	Tubing	Casing	
Pressure Test	01/13/2012 03:45		0.5	0.1			370.0	HELD PRESSURE FOR 2 MIN, PRESSURE HELD, NO LEAKS.
Pump Spacer 1	01/13/2012 03:50		4	20			140.0	FRESH WATER, PREMIXED CEMENT TUB AND WEIGHED WITH SCALES.
Pump Spacer 2	01/13/2012 03:55		4	20			120.0	GEL SPACER, 20 BBLS WATER WITH 5 GAL LGC.
Pump Spacer 1	01/13/2012 04:00		4	20			100.0	FRESH WATER
Pump Lead Cement	01/13/2012 04:05		7	437			500.0	1055 SKS VERSACEM, 12.3 PPG, 2.33 CUFT/SK, 12.62 GAL/SK, 7 BOXES TUFF FIBER MIXED IN DOWNHOLE SIDE OF TUB ON THE FLY. STARTED AT 7 BPM THEN SLOWED TO 6 BPM AT 70 BBLS GONE.
Comment	01/13/2012 04:17							AROUND 80 BBLS GONE THE PUMPS STOPPED MOVING FLUID DUE TO TUFF FIBER CLOGS, FOR THE NEXT 14 MINUTES WE HAD TO CHANGE RATES RAPIDLY TO GET IT TO KEEP MOVING, AROUND 200 BBLS GONE ON COUNTER IT LEVELED OUT, BBL COUNT READ 578 BBLS PUMPED.
Pump Tail Cement	01/13/2012 05:31		6	59			230.0	160 SKS VERSACEM, 12.8 PPG, 2.07 CUFT/SK, 10.67 GAL/SK,
Shutdown	01/13/2012 05:40							
Drop Top Plug	01/13/2012 05:41							VARIFIED PLUG LEFT CONTAINER.

Activity Description	Date/Time	Cht #	Rate bbl/min	Volume bbl		Pressure psig		Comments
				Stage	Total	Tubing	Casing	
Pump Displacement	01/13/2012 05:42		8	205.7			950.0	FRESH WATER STARTED AT 8 BPM THEN SLOWED TO 6 BPM AT 20 BBLS GONE WHEN CAUGHT PRESSURE, THEN SLOWED TO 4 BPM AT 140 BBLS GONE. USED 4 SKS CALCIUM CHLORIDE IN LAST 20 BBLS DISPLACEMENT FOR CASING TEST, ADDED TO TICKET.
Slow Rate	01/13/2012 06:19		2	195			880.0	SLOWED RATE TO 2 BPM TO BUMP PLUG.
Bump Plug	01/13/2012 06:21		2	200			1400.0	PLUG LANDED AT 200 BBLS GONE AT 880 PSI, BUMPED UP TO 1400 PSI AND HELD FOR MIN PER CO REP.
Check Floats	01/13/2012 06:22							FLOATS HELD, WHEN RELEASED PRESSURE GOT 1 BBL OF WATER BACK TO TRUCK.
Pressure Up	01/13/2012 06:26		1	1			1500.0	PRESSURE UP TO 1500 PSI TO TEST CASING.
Release Casing Pressure	01/13/2012 06:59							RELEASED PRESSURE AT 1530 PSI, GOOD TEST.
Safety Huddle	01/13/2012 07:00							RIG UP IRON TO CELLAR TO PUMP THROUGH PARASITE.
Pump Water	01/13/2012 07:06		2	10			700.0	10 BBLS WATER WITH 10 LBS SUGAR PUMPED TO CLEAR PARASITE, CAUGHT PRESSURE AT 6.5 BBLS GONE AND GOT RETURNS BACK.
Shutdown	01/13/2012 07:11							PARASITE CLEAR.

Activity Description	Date/Time	Cht #	Rate bbl/ min	Volume bbl		Pressure psig		Comments
				Stage	Total	Tubing	Casing	
End Job	01/13/2012 07:12							DID NOT RECIPROCATATE PIPE DURING JOB. GAINED RETURNS AT TAIL CEMENT AND HAD GOOD RETURNS REMAINDER, CEMENT TO SURFACE AT 128 BBLs GONE ON DISPLACEMENT, 72 BBLs TO SURFACE, FELL BACK ONLY ABOUT 10 -15 FT.
Post-Job Safety Meeting (Pre Rig-Down)	01/13/2012 07:30							ENTIRE CREW
Rig-Down Equipment	01/13/2012 08:00							BLEW DOWN LEAD SILO, DID NOT USE ANY TOPOUT FROM OTHER SILO.
Pre-Convoy Safety Meeting	01/13/2012 08:50							ENTIRE CREW, OBSERVE ALL SAFE DRIVING PROCEDURES
Crew Leave Location	01/13/2012 09:00							THANK YOU FOR USING HALLIBURTON, ERIC STILLSON AND CREW.

OXY - CC 697-05-36B

9 5/8 SURFACE



Local Event Log

1 START JOB	03:42:43	2 FILL LINES	03:43:12	3 PRESSURE TEST	03:45:30
4 PUMP WATER SPACER	03:50:03	5 PUMP GEL SPACER	03:55:03	6 PUMP WATER SPACER	04:00:03
7 PUMP LEAD CEMENT	04:05:47	8 STOPPED MOVING FLUID	04:17:10	9 FLUID MOVING CORRECTLY	04:31:47
10 PUMP TAIL CEMENT	05:31:31	11 SHUTDOWN	05:40:47	12 DROP PLUG	05:41:24
13 PUMP DISPLACEMENT	05:42:12	14 SLOW RATE	06:05:10	15 SLOW RATE	06:19:27
16 BUMP PLUG	06:21:27	17 CHECK FLOATS	06:22:48	18 CASING PRESSURE TEST	06:26:05
19 RELEASE PRESSURE	06:59:51	20 CLEAR PARASITE	07:06:06	21 END JOB	07:12:05

Customer: OXY
Well Description: CC 697-05-36B
Company Rep: ALEX VILLEGAS

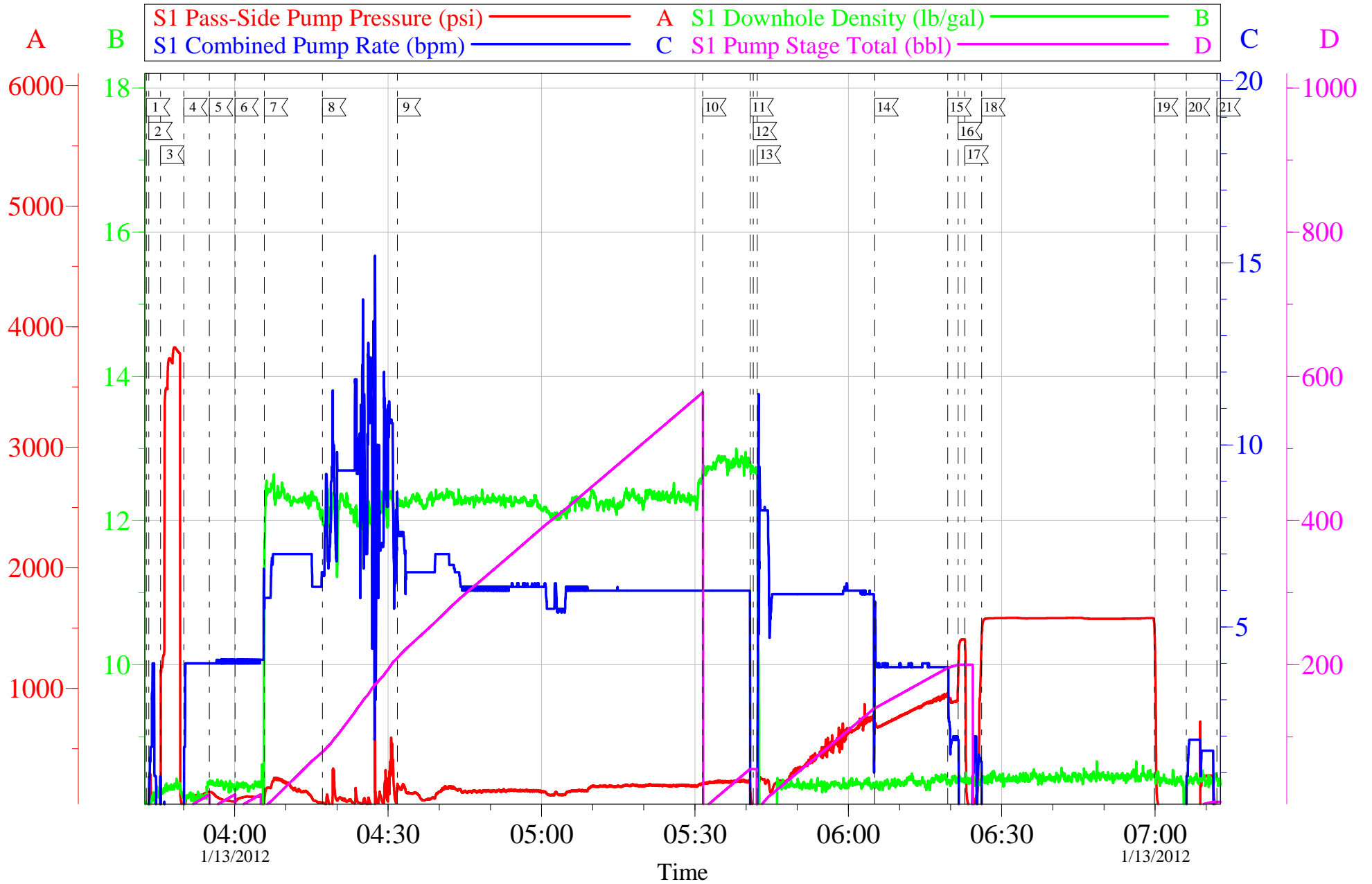
Job Date: 13-Jan-2012
Job Type: SURFACE
Cement Supervisor: ERIC STILLSON

Sales Order #: 9107170
ADC Used: YES
Elite #3: RAY HARDRICK

OptiCem v6.4.10
13-Jan-12 07:36

OXY - CC 697-05-36B

9 5/8 SURFACE



Customer: OXY
Well Description: CC 697-05-36B
Company Rep: ALEX VILLEGAS

Job Date: 13-Jan-2012
Job Type: SURFACE
Cement Supervisor: ERIC STILLSON

Sales Order #: 9107170
ADC Used: YES
Elite #3: RAY HARDRICK

OptiCem v6.4.10
13-Jan-12 07:37

Sales Order #: 9107170	Line Item: 10	Survey Conducted Date: 1/13/2012
Customer: OXY GRAND JUNCTION EBUSINESS		Job Type (BOM): CMT SURFACE CASING BOM
Customer Representative: CAL WYLE		API / UWI: (leave blank if unknown) 05-045-20364
Well Name: CC		Well Number: 697-05-36B
Well Type: Development Well	Well Country: United States of America	
H2S Present:	Well State: Colorado	Well County: Garfield

Dear Customer,

We hope that you were satisfied with the service quality of this job performed by Halliburton. It is the aim of our management and service personnel to deliver equipment and service of a standard unmatched in the service sector of the energy industry.

Please take the time to let us know if our performance met with your satisfaction. Please be as critical as possible to ensure we constantly improve our service. Your comments are of great value to us and are intended for the exclusive use of Halliburton.

CUSTOMER SATISFACTION SURVEY

CATEGORY	CUSTOMER SATISFACTION RESPONSE	
Survey Conducted Date	The date the survey was conducted	1/13/2012
Survey Interviewer	The survey interviewer is the person who initiated the survey.	ERIC STILLSON (HX26907)
Customer Participation	Did the customer participate in this survey? (Y/N)	Yes
Customer Representative	Enter the Customer representative name	CAL WYLE
HSE	Was our HSE performance satisfactory? Circle Y or N	Yes
Equipment	Were you satisfied with our Equipment? Circle Y or N	Yes
Personnel	Were you satisfied with our people? Circle Y or N	Yes
Customer Comment	Customer's Comment	ON TIME, NO PROBLEMS, GOT CEMENT TO SURFACE, GOOD JOB

CUSTOMER SIGNATURE

Sales Order #: 9107170	Line Item: 10	Survey Conducted Date: 1/13/2012
Customer: OXY GRAND JUNCTION EBUSINESS		Job Type (BOM): CMT SURFACE CASING BOM
Customer Representative: CAL WYLE		API / UWI: (leave blank if unknown) 05-045-20364
Well Name: CC		Well Number: 697-05-36B
Well Type: Development Well	Well Country: United States of America	
H2S Present:	Well State: Colorado	Well County: Garfield

KEY PERFORMANCE INDICATORS

General	
Survey Conducted Date The date the survey was conducted	1/13/2012

Cementing KPI Survey	
Type of Job Select the type of job. (Cementing or Non-Cementing)	0
Select the Maximum Deviation range for this Job What is the highest deviation for the job you just completed? This may not be the maximum well deviation.	Vertical
Total Operating Time (hours) Total Operating Hours Including Rig-up, Pumping, Rig-down. Enter in decimal format.	7
HSE Incident, Accident, Injury HSE Incident, Accident, Injury. This should be recordable incidents only.	No
Was the job purpose achieved? Was the job delivered correctly as per customer agreed design?	Yes
Operating Hours (Pumping Hours) Total number of hours pumping fluid on this job. Enter in decimal format.	4
Customer Non-Productive Rig Time (hrs) Lost time due to Halliburton in the start, execution, or completion of an ordered service or product, or delays in a follow-on service. Enter in decimal format. 0 if none.	0
Type of Rig Classification Job Was Performed Type Of Rig (classification) Job Was Performed On	Drilling Rig (Portable)
Number Of JSAs Performed Number Of Jsas Performed	7
Number of Unplanned Shutdowns Unplanned shutdown is when injection stops for any period of time.	0
Was this a Primary Cement Job (Yes / No)	Yes

Sales Order #: 9107170	Line Item: 10	Survey Conducted Date: 1/13/2012
Customer: OXY GRAND JUNCTION EBUSINESS		Job Type (BOM): CMT SURFACE CASING BOM
Customer Representative: CAL WYLE		API / UWI: (leave blank if unknown) 05-045-20364
Well Name: CC		Well Number: 697-05-36B
Well Type: Development Well	Well Country: United States of America	
H2S Present:	Well State: Colorado	Well County: Garfield

Primary Cement Job= Casing job, Liner job, or Tie-back job.	
Did We Run Wiper Plugs? Did We Run Top And Bottom Casing Wiper Plugs?	Top
Mixing Density of Job Stayed in Designed Density Range (0-100%) Density Range defined as +/- .20 ppg. Calculation: Total BBLs cement mixed at designed density divided by total BBLs of cement multiplied by 100	95
Was Automated Density Control Used? Was Automated Density Control (ADC) Used ?	Yes
Pump Rate (percent) of Job Stayed At Designed Pump Rate Pump Rate range defined as +/- 1bbl/min. Calculation: Total BBLs of fluid pumped at the designed rate divided by Total BBLs of fluid pumped, multiplied by 100	95
Nbr of Remedial Sqz Jobs Rqd - Competition Number Of Remedial Squeeze Jobs Required After Primary Job Performed By Competition	0
Nbr of Remedial Plug Jobs Rqd - HES Number Of Remedial Plug Jobs Needed After Primary Plug Pumped By HES	0
Nbr of Remedial Sqz Jobs Rqd - HES Number Of Remedial Squeeze Jobs Required After Primary Job Performed By HES	0