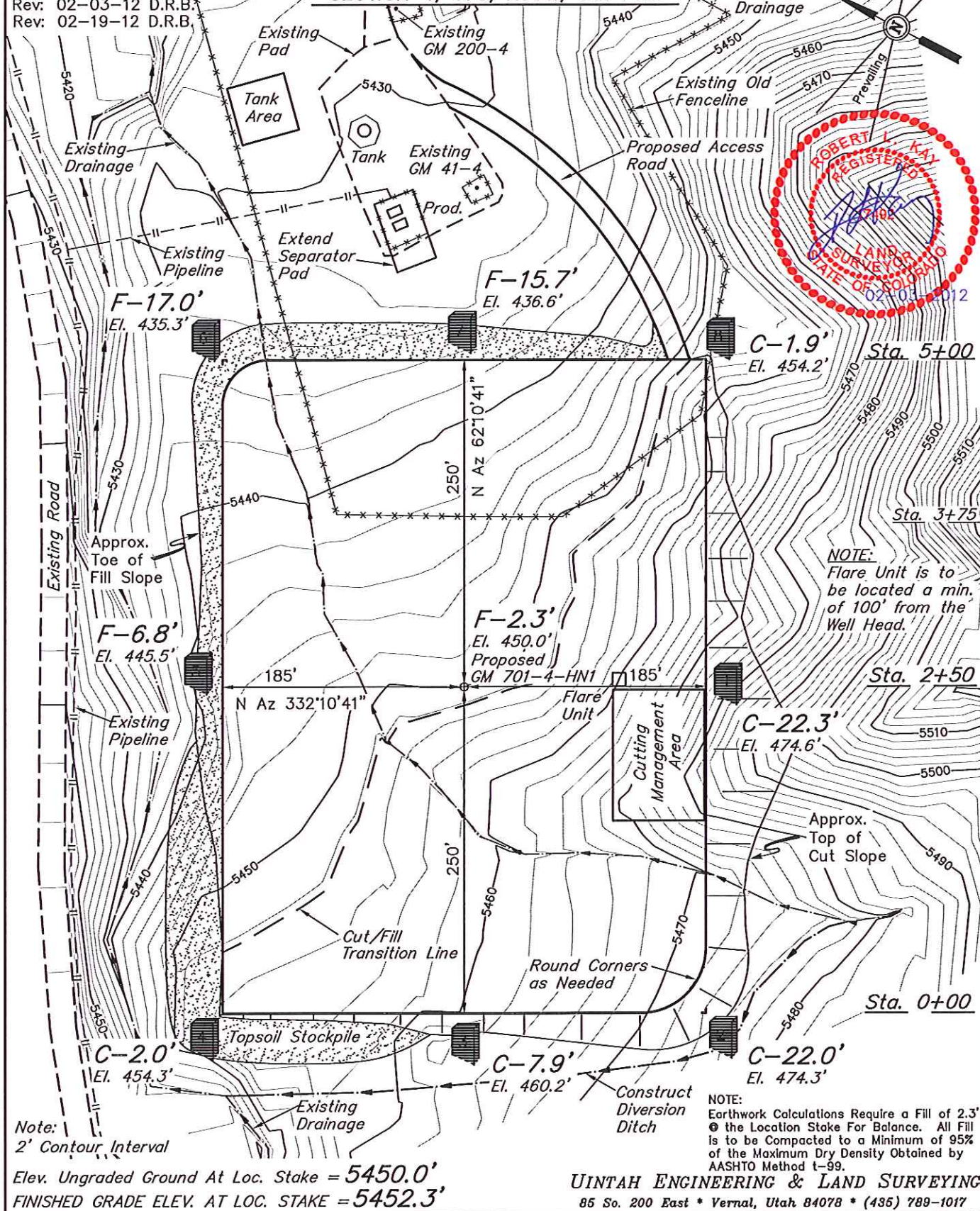


SCALE: 1" = 100'
 DATE: 09-27-11
 DRAWN BY: D.R.B.
 Rev: 01-30-12 D.R.B.
 Rev: 02-03-12 D.R.B.
 Rev: 02-19-12 D.R.B.

WPX Energy Rocky Mountain, LLC

PLAT #2_LOCATION LAYOUT FOR GM 41-4
 SECTION 4, T7S, R96W, 6th P.M.



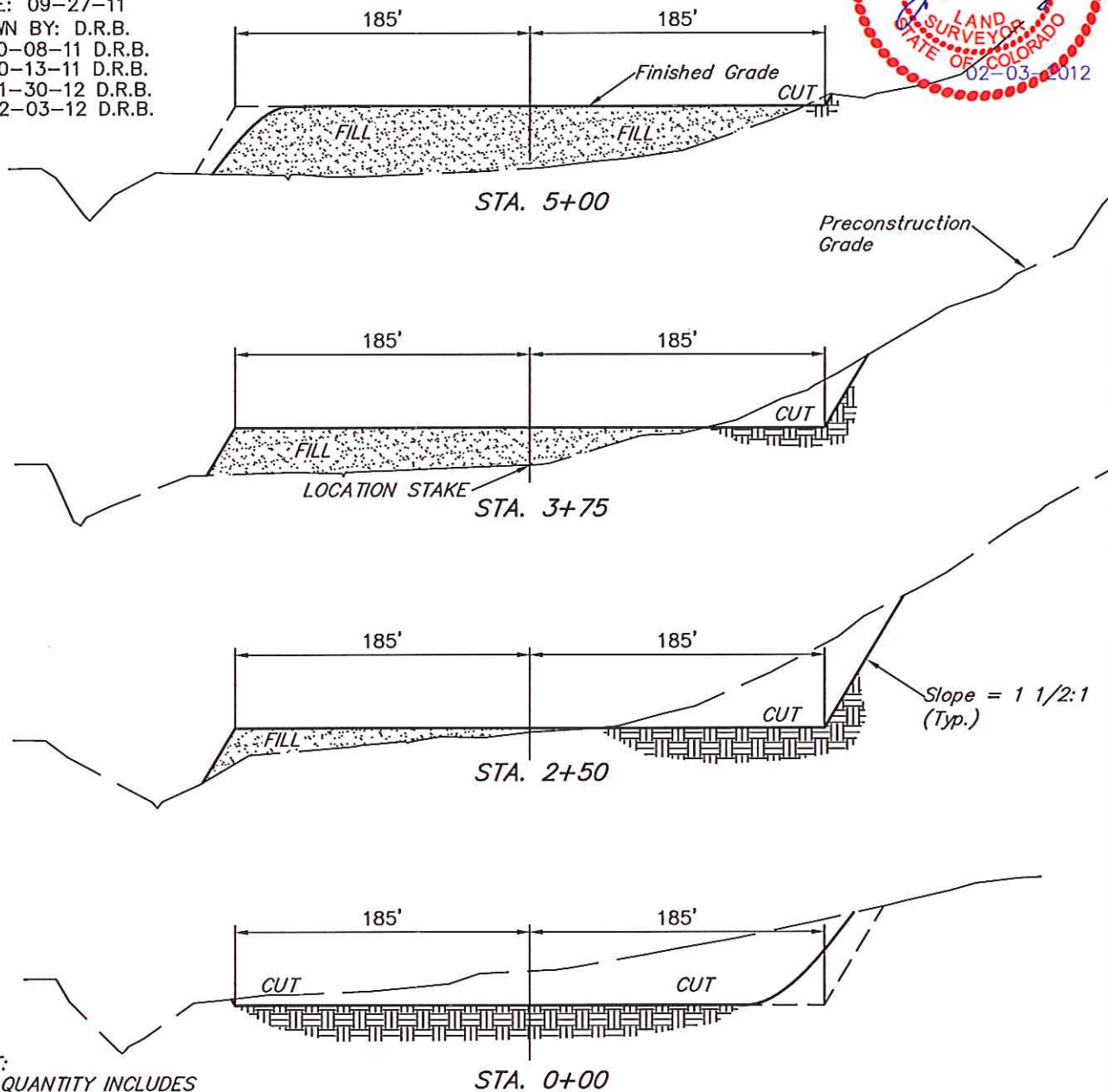
1" = 40'
X-Section
Scale
1" = 100'

WPX Energy Rocky Mountain, LLC

PLAT #3_TYPICAL CROSS SECTION FOR GM 41-4
SECTION 4, T7S, R96W, 6th P.M.



DATE: 09-27-11
DRAWN BY: D.R.B.
Rev: 10-08-11 D.R.B.
Rev: 10-13-11 D.R.B.
Rev: 01-30-12 D.R.B.
Rev: 02-03-12 D.R.B.



* NOTE:
FILL QUANTITY INCLUDES
5% FOR COMPACTION

APPROXIMATE YARDAGES

(6") Topsoil Stripping	= 4,270 Cu. Yds.
Remaining Location	= 33,810 Cu. Yds.
TOTAL CUT	= 38,080 CU.YDS.
FILL	= 33,810 CU.YDS.

EXCESS MATERIAL	= 4,270 Cu. Yds.
Topsoil	= 4,270 Cu. Yds.
EXCESS UNBALANCE (After Interim Rehabilitation)	= 0 Cu. Yds.

UINTAH ENGINEERING & LAND SURVEYING
85 So. 200 East * Vernal, Utah 84078 * (435) 789-1017