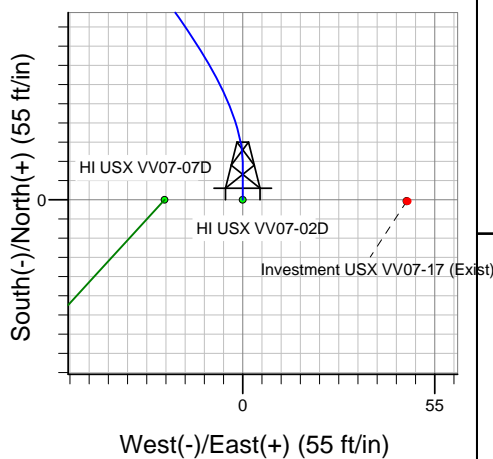
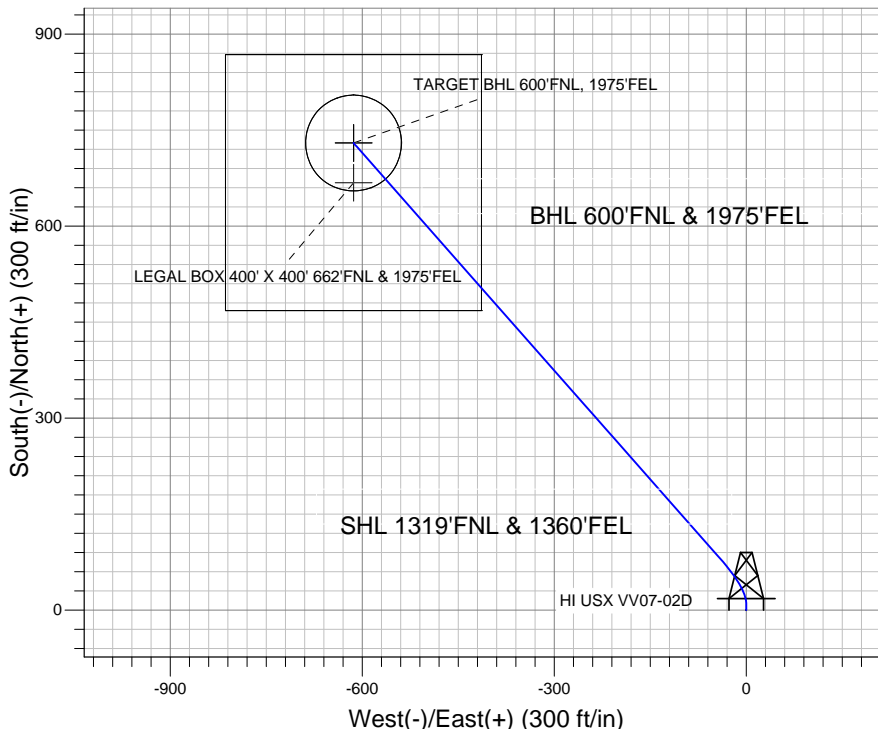
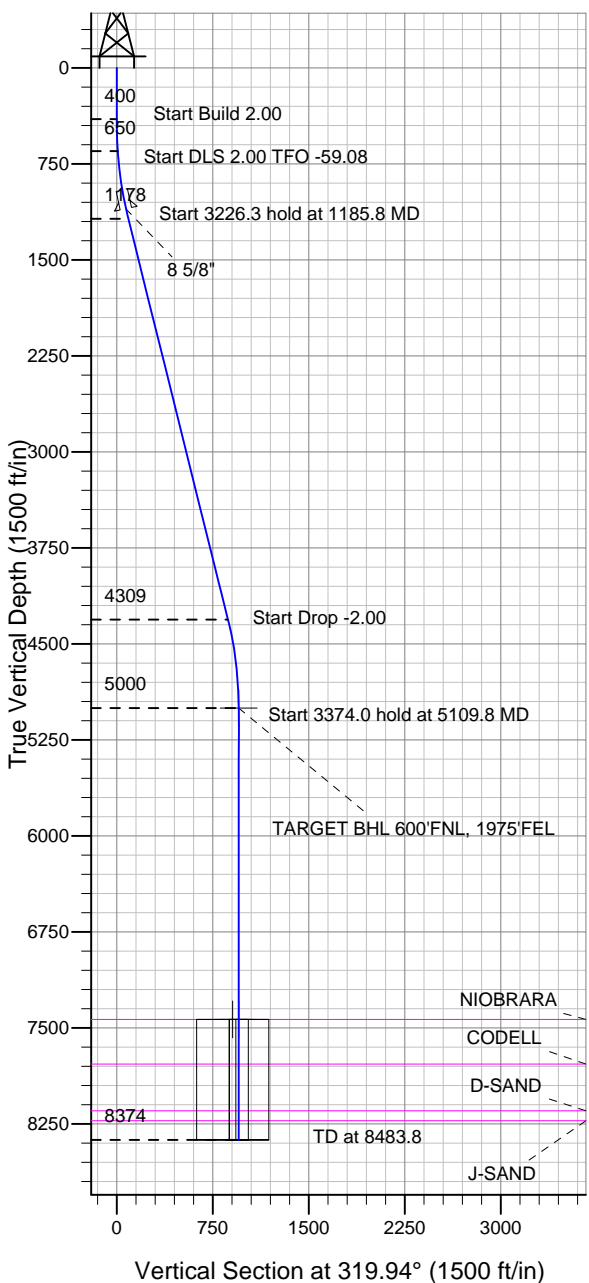


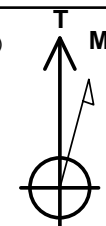
Well Name: HI USX VV07-02D

Surface Location: HI USX VV07-02D Pad Sec.7-T1N-R67W
 North American Datum 1983 US State Plane 1983 Colorado Northern Zone
 Ground Elevation: 5081.0
 +N/-S +E/-W Northing Easting Latitude Longitude Slot
 0.0 0.0 1268624.60 3159867.73 40.069351 -104.928772
 Original Well Elev WELL @ 5094.0ft (Original Well Elev)

NOBLE ENERGY INC WELD COUNTY CO



HI USX VV07-02D Pad Sec.7-T1N-R67W
 HI USX VV07-02D
 Noble HI USX VV07-02D Plan #1 (12-20-11)
 14:41, December 21 2011



Azimuths to True North
 Magnetic North: 8.85°
 Magnetic Field
 Strength: 52882.8snT
 Dip Angle: 66.74°
 Date: 12/21/2011
 Model: IGRF2010

WELLBORE TARGET DETAILS (LAT/LONG)

Name	TVD	+N/-S	+E/-W	Latitude	Longitude	Shape
TARGET BHL 600'FNL, 1975'FEL	5000.0	729.7	-613.5	40.071354	-104.930964	Point
LEGAL BOX 400' X 400' 662'FNL & 1975'FEL	7434.0	667.7	-613.5	40.071184	-104.930964	Rectangle (Sides: L400.0 W400.0)
TARGET CIRCLE 600'FNL & 1975'FEL	7434.0	729.7	-613.5	40.071354	-104.930964	Circle (Radius: 75.0)

SECTION DETAILS

Sec	MD	Inc	Azi	TVD	+N/-S	+E/-W	DLeg	TFace	VSec	Target
1	0.0	0.00	0.00	0.0	0.0	0.0	0.00	0.00	0.0	
2	400.0	0.00	0.00	400.0	0.0	0.0	0.00	0.00	0.0	
3	650.0	5.00	0.00	649.7	10.9	0.0	2.00	0.00	8.3	
4	1185.8	13.95	318.58	1178.1	82.9	-42.9	2.00	-59.08	91.0	
5	4412.1	13.95	318.58	4309.2	666.3	-557.5	0.00	0.00	868.8	
6	5109.8	0.00	0.00	5000.0	729.7	-613.5	2.00	180.00	953.3	TARGET BHL 600'FNL, 1975'FEL
7	8483.8	0.00	0.00	8374.0	729.7	-613.5	0.00	0.00	953.3	