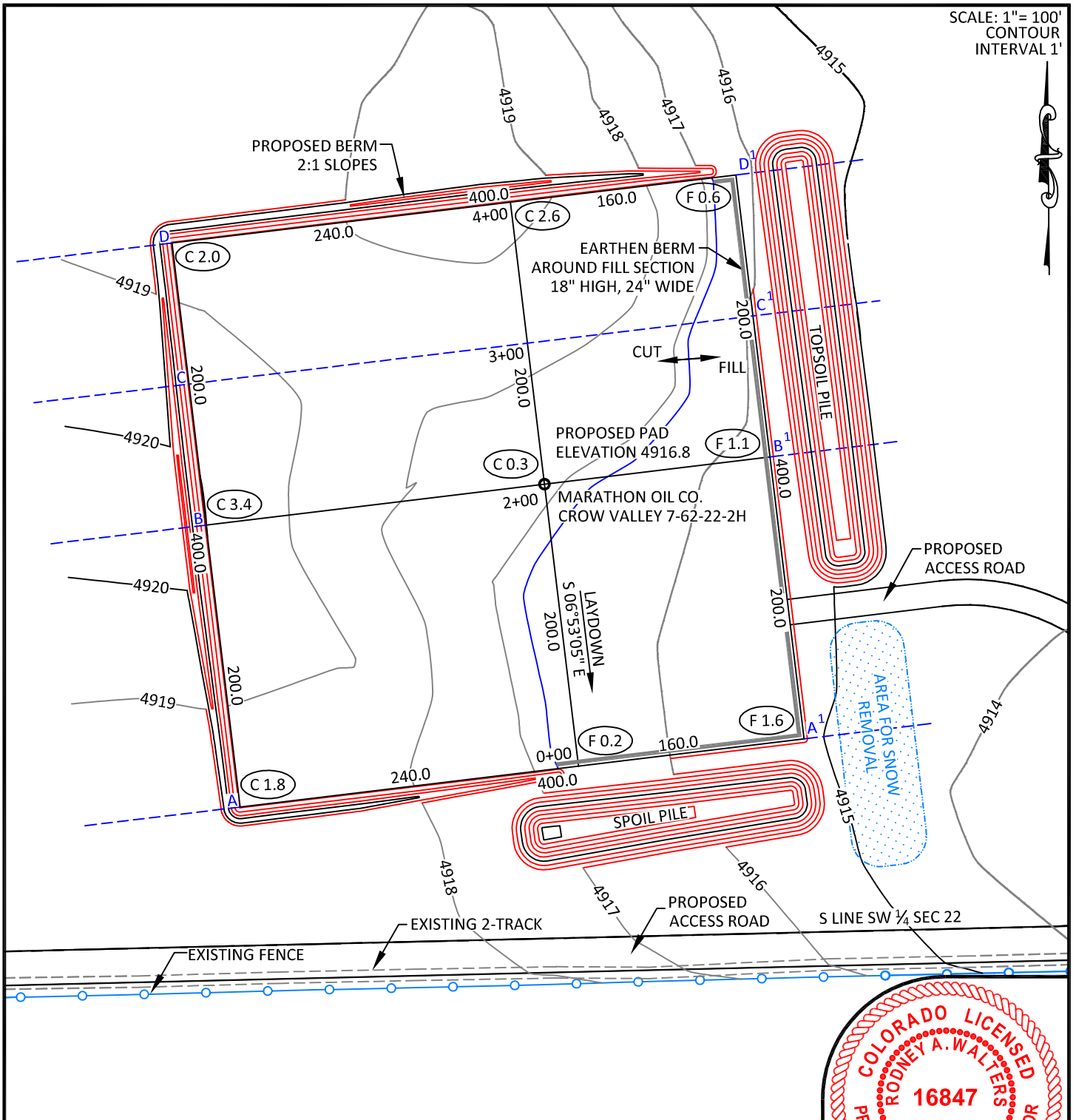


SCALE: 1" = 100'
CONTOUR
INTERVAL 1'



NOTES:

- Elevation of pad shown on plans are to constructed pad without final gravel padding placement. Depth, volume, and padding material to be determined by operator.
- The information contained in this plat is legally privileged and confidential information intended only for the use of the recipients. If you are not the intended recipients, you are hereby notified that any use, dissemination, distribution or copying of this information is strictly prohibited.



**WILLIAM H. SMITH
& ASSOCIATES P.C.**

SURVEYING CONSULTANTS
550 EAST SECOND NORTH PHONE: 307-875-3638
GREEN RIVER, WY 307-875-3639
www.whsmithpc.com

CONSTRUCTION DATA

CUT SLOPE	3:1
FILL SLOPE	3:1
TOTAL CUT	7,983 CU. YDS.
TOTAL FILL	2,775 CU. YDS.
TOP SOIL AT 6"	3,289 CU. YDS.
SPOIL	1,919 CU. YDS.
DISTURBED AREA	177,612 SQ. FT.
DISTURBED AREA	4.08 ACRES

LOCATION:

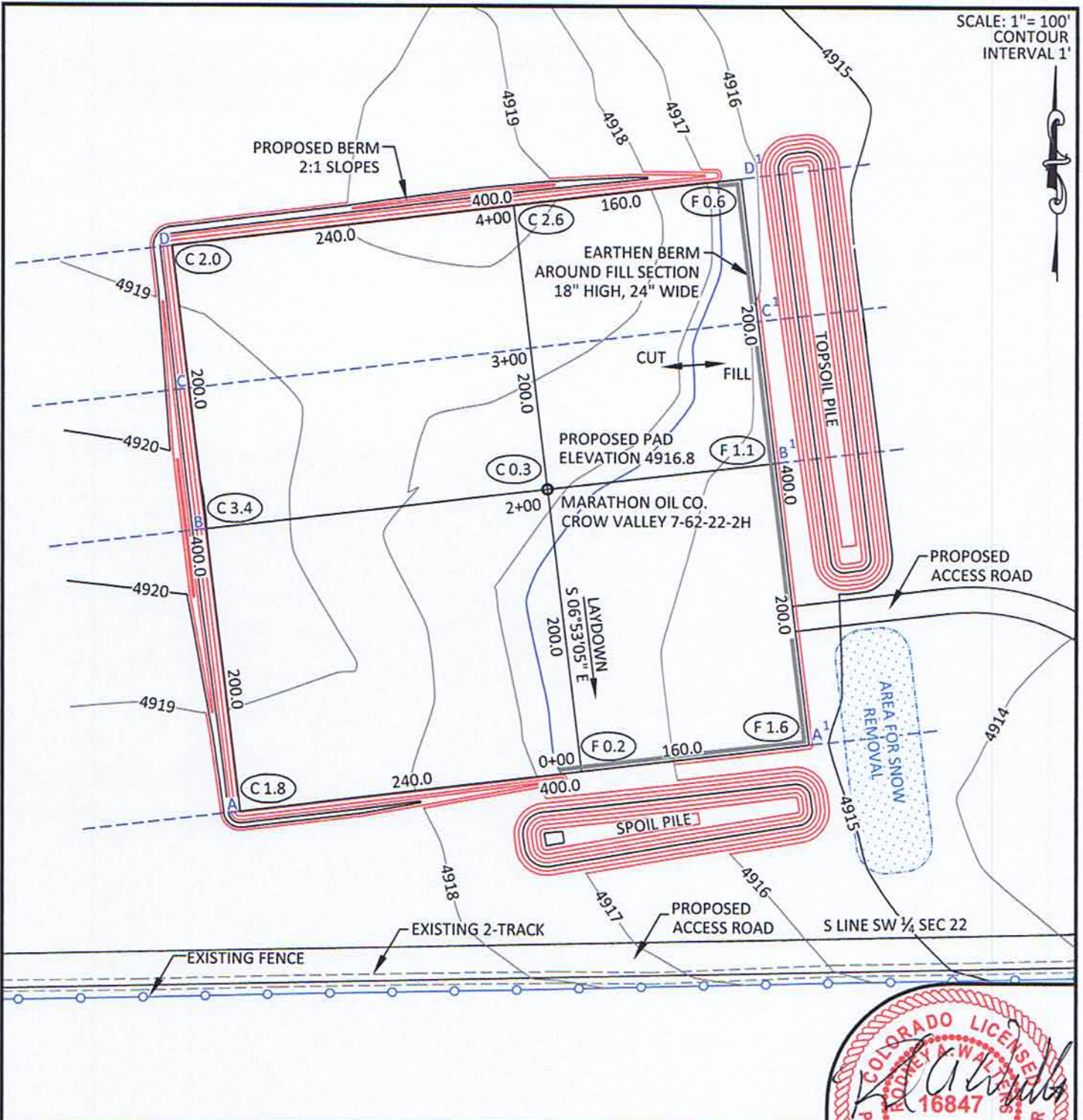
CROW VALLEY
7-62-22-2H
WITHIN THE SE/4
SW/4, SECTION 22,
T 7 N, R 62 W,
6TH PM.
WELD COUNTY,
COLORADO

MARATHON OIL COMPANY
PO BOX 3128, HOUSTON TX, 77253
5555 SAN FELIPE, HOUSTON TX, 77056

CONSTRUCTION LAYOUT

320' FSL	1911' FWL
SCALE: 1"=100'	EXHIBIT "I"
DATE: 01/30/2012	SHEET 8 OF 14

SCALE: 1"= 100'
CONTOUR
INTERVAL 1'



NOTES:

- Elevation of pad shown on plans are to constructed pad without final gravel padding placement. Depth, volume, and padding material to be determined by operator.
- The information contained in this plat is legally privileged and confidential information intended only for the use of the recipients. If you are not the intended recipients, you are hereby notified that any use, dissemination, distribution or copying of this information is strictly prohibited.



WILLIAM H. SMITH & ASSOCIATES P.C.
SURVEYING CONSULTANTS
250 EAST SECOND NORTH GREEN RIVER, WY
PHONE: 307-875-3638 307-875-3639
www.whsmithpc.com

CONSTRUCTION DATA	
CUT SLOPE	3:1
FILL SLOPE	3:1
TOTAL CUT	7,983 CU. YDS.
TOTAL FILL	2,775 CU. YDS.
TOP SOIL AT 6"	3,289 CU. YDS.
SPOIL	1,919 CU. YDS.
DISTURBED AREA	177,612 SQ. FT.
DISTURBED AREA	4.08 ACRES

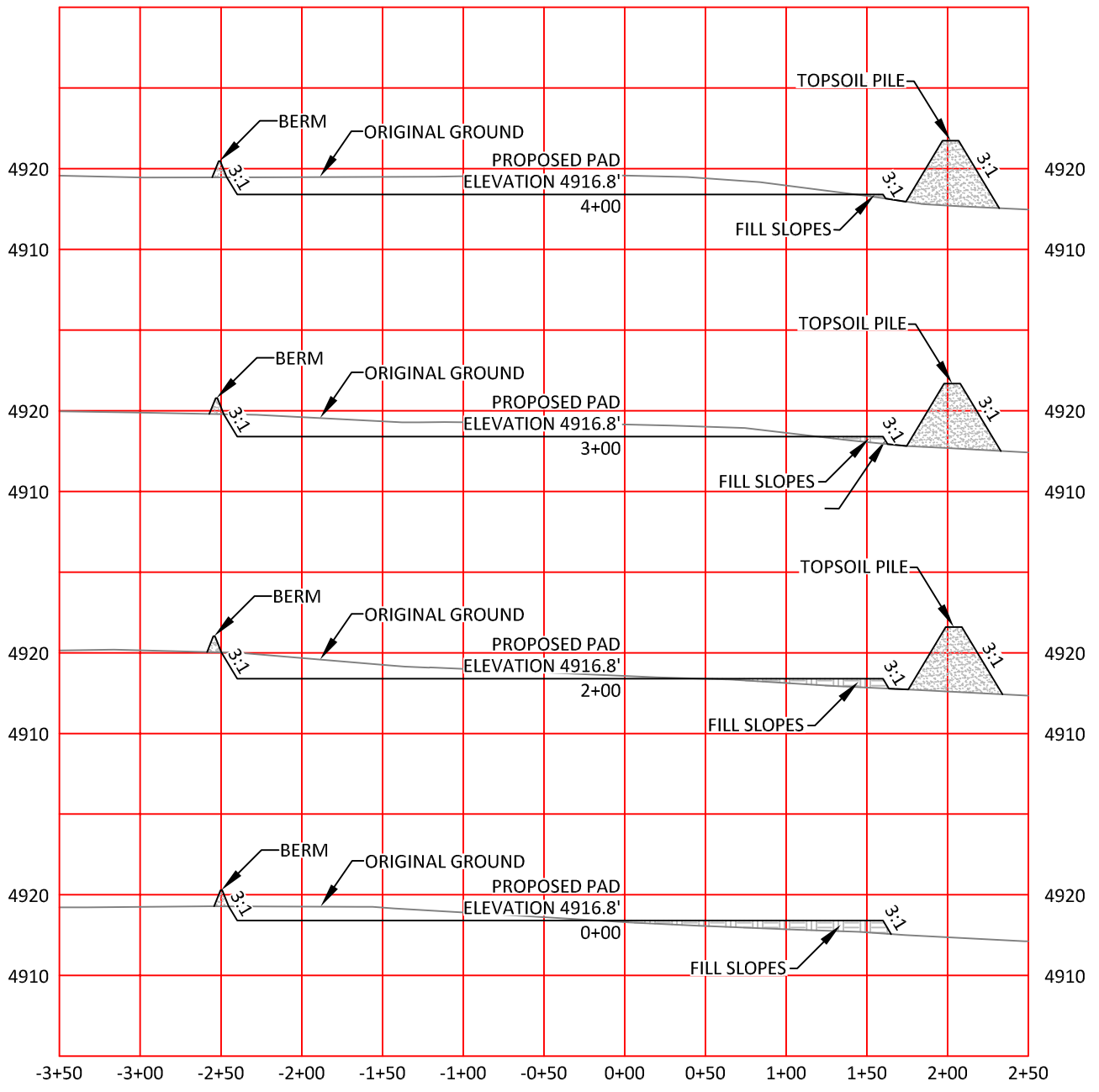
LOCATION:
CROW VALLEY
7-62-22-2H
WITHIN THE SE/4
SW/4, SECTION 22,
T 7 N, R 62 W,
6TH PM.
WELD COUNTY,
COLORADO

MARATHON OIL COMPANY
PO BOX 3128, HOUSTON TX, 77253
5555 SAN FELIPE, HOUSTON TX, 77056

CONSTRUCTION LAYOUT

320' FSL	1911' FWL
SCALE: 1"=100'	EXHIBIT "I"
DATE: 01/30/2012	SHEET 8 OF 14

DRAWN BY: LAL	CHECKED BY: RAW
PROJECT NO: 762222H	JOB NO: 2011001
REVISIONS:	



HORIZONTAL SCALE: 1"=100' - VERTICAL SCALE: 1"=20'

NOTES:

- Elevation of pad shown on plans are to constructed pad without final gravel padding placement. Depth, volume, and padding material to be determined by operator.
- The information contained in this plat is legally privileged and confidential information intended only for the use of the recipients. If you are not the intended recipients, you are hereby notified that any use, dissemination, distribution or copying of this information is strictly prohibited.



**WILLIAM H. SMITH
& ASSOCIATES P.C.**

SURVEYING CONSULTANTS
550 EAST SECOND NORTH PHONE: 307-875-3638
GREEN RIVER, WY 307-875-3639
www.whsmithpc.com

CONSTRUCTION DATA

CUT SLOPE	3:1
FILL SLOPE	3:1
TOTAL CUT	7,983 CU. YDS.
TOTAL FILL	2,775 CU. YDS.
TOP SOIL AT 6"	3,289 CU. YDS.
SPOIL	1,919 CU. YDS.
DISTURBED AREA	177,612 SQ. FT.
DISTURBED AREA	4.08 ACRES

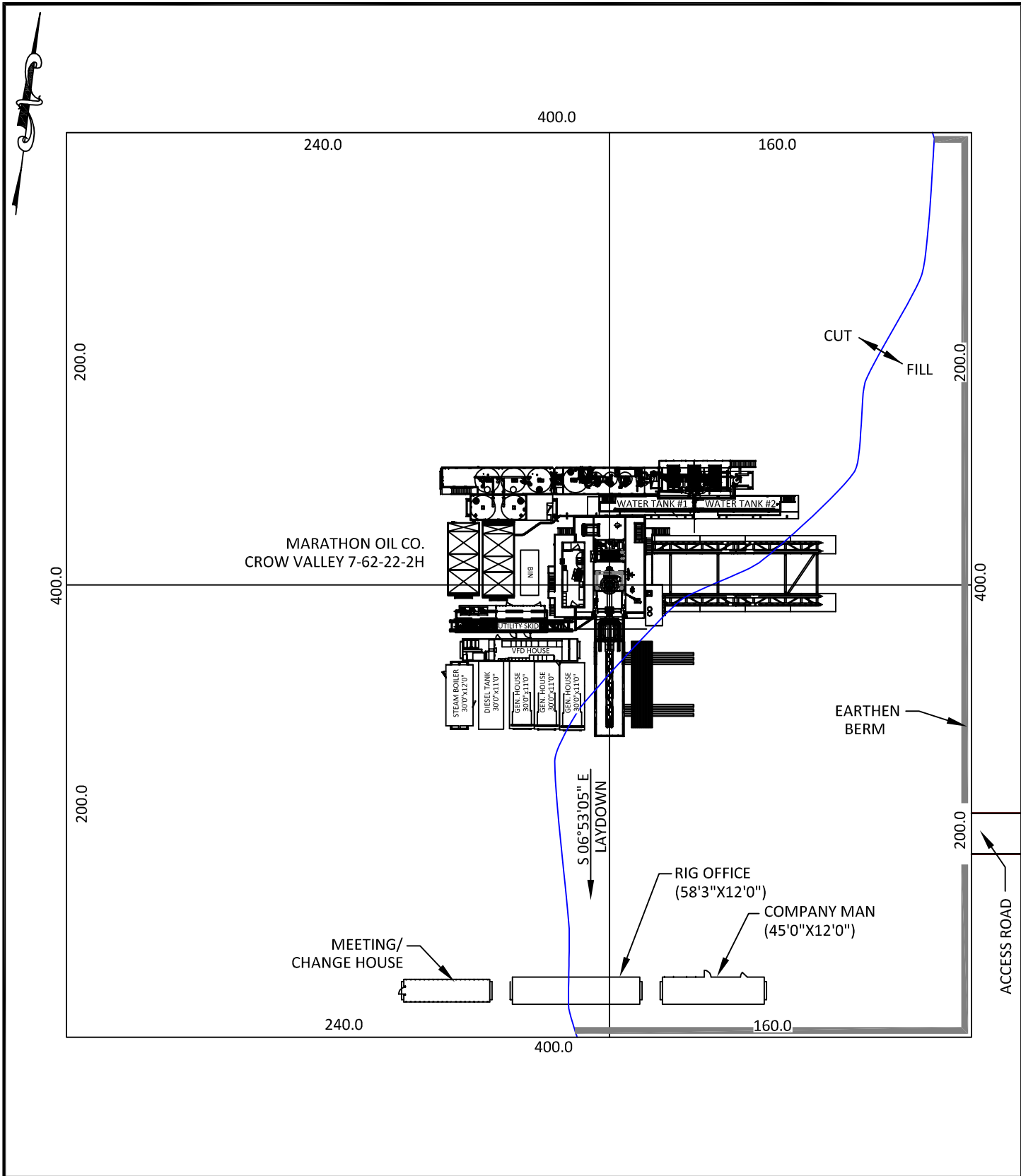
LOCATION:

CROW VALLEY
7-62-22-2H
WITHIN THE SE/4
SW/4, SECTION 22,
T 7 N, R 62 W,
6TH PM.
WELD COUNTY,
COLORADO

MARATHON OIL COMPANY
PO BOX 3128, HOUSTON TX, 77253
5555 SAN FELIPE, HOUSTON TX, 77056

**CONSTRUCTION LAYOUT
CROSS SECTIONS**

SCALE: NOTED	EXHIBIT "J"
DATE: 01/30/2012	SHEET 9 OF 14



WILLIAM H. SMITH & ASSOCIATES P.C.
SURVEYING CONSULTANTS

550 EAST SECOND NORTH PHONE: 307-875-3638
 GREEN RIVER, WY 307-875-3639
 www.whsmithpc.com

DRAWN BY: LAL	CHECKED BY: RAW
PROJECT NO: 762222H	JOB NO: 2011001
REVISIONS:	

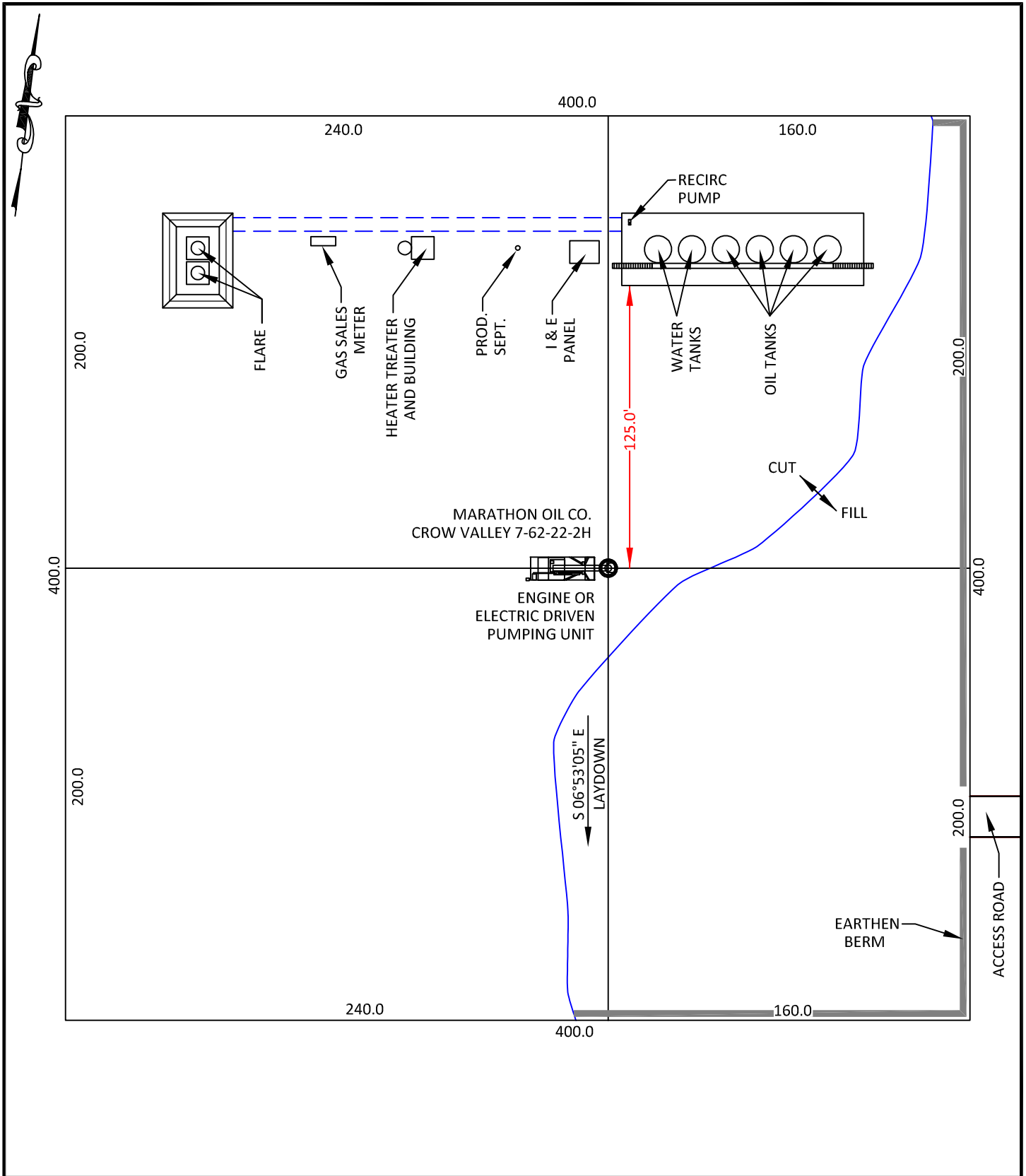
CONFIDENTIALITY NOTES:
 The information contained in this plat is legally privileged and confidential information intended only for the use of the recipients. If you are not the intended recipients, you are hereby notified that any use, dissemination, distribution or copying of this information is strictly prohibited.

LOCATION:
 CROW VALLEY
 7-62-22-2H
 WITHIN THE SE/4
 SW/4, SECTION 22,
 T 7 N, R 62 W,
 6TH PM.
 WELD COUNTY,
 COLORADO

MARATHON OIL COMPANY
 PO BOX 3128, HOUSTON TX, 77253
 5555 SAN FELIPE, HOUSTON TX, 77056

DRILLING FACILITIES

SCALE: 1"=60'	EXHIBIT "K"
DATE: 01/30/2012	SHEET 10 OF 14



WILLIAM H. SMITH & ASSOCIATES P.C.
SURVEYING CONSULTANTS
 550 EAST SECOND NORTH PHONE: 307-875-3638
 GREEN RIVER, WY 307-875-3639
 www.whsmithpc.com

DRAWN BY: LAL	CHECKED BY: RAW
PROJECT NO: 762222H	JOB NO: 2011001
REVISIONS:	

CONFIDENTIALITY NOTES:
 The information contained in this plat is legally privileged and confidential information intended only for the use of the recipients. If you are not the intended recipients, you are hereby notified that any use, dissemination, distribution or copying of this information is strictly prohibited.

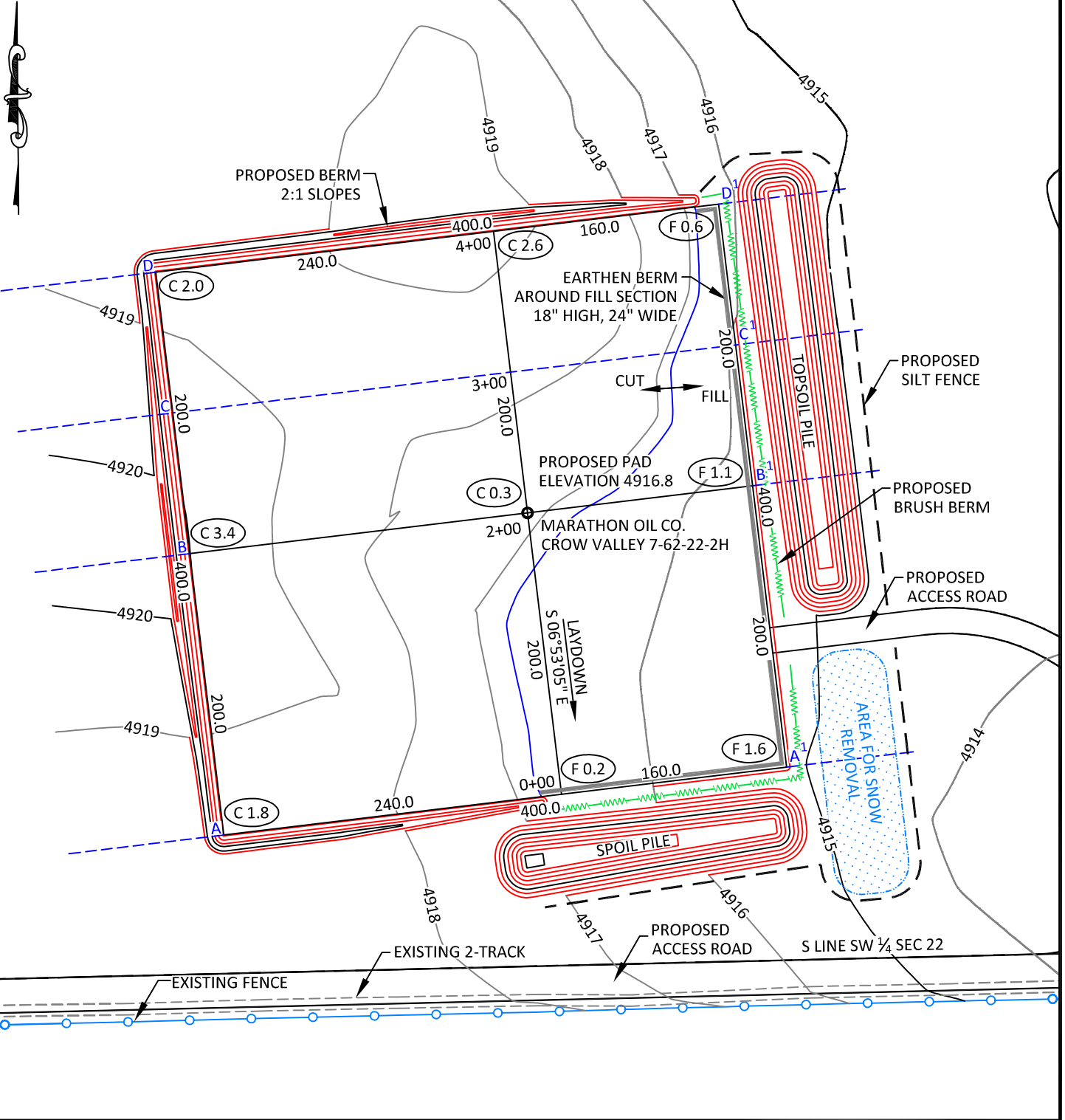
LOCATION:
 CROW VALLEY
 7-62-22-2H
 WITHIN THE SE/4
 SW/4, SECTION 22,
 T 7 N, R 62 W,
 6TH PM.
 WELD COUNTY,
 COLORADO

MARATHON OIL COMPANY
 PO BOX 3128, HOUSTON TX, 77253
 5555 SAN FELIPE, HOUSTON TX, 77056


PRODUCTION FACILITIES

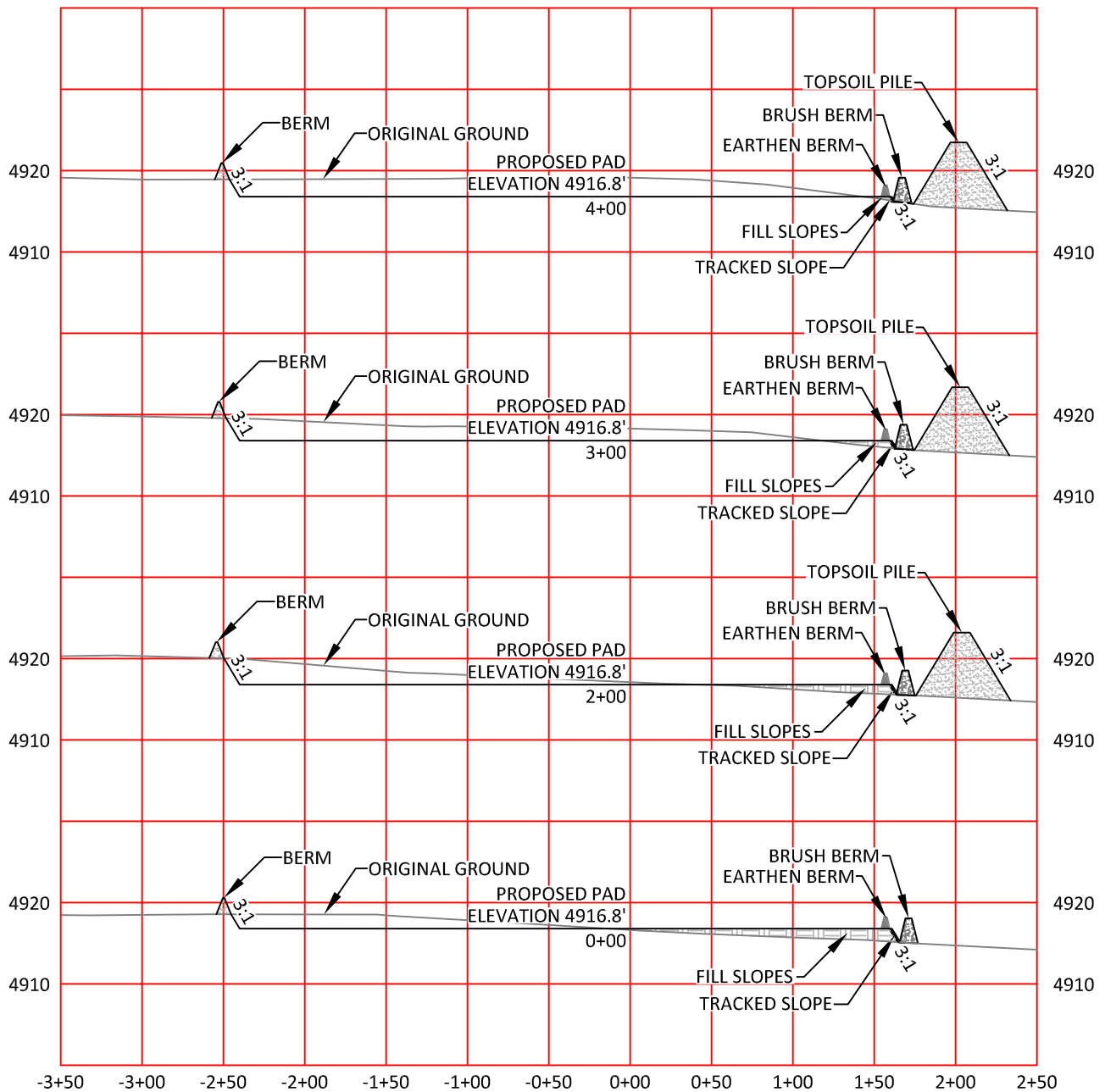
SCALE: 1"=60'	EXHIBIT "L"
DATE: 01/30/2012	SHEET 11 OF 14

SCALE: 1" = 100'
 CONTOUR
 INTERVAL 1'



CONFIDENTIALITY NOTES:
 The information contained in this plat is legally privileged and confidential information intended only for the use of the recipients. If you are not the intended recipients, you are hereby notified that any use, dissemination, distribution or copying of this information is strictly prohibited.

 <p>WILLIAM H. SMITH & ASSOCIATES P.C. SURVEYING CONSULTANTS 550 EAST SECOND NORTH PHONE: 307-875-3638 GREEN RIVER, WY 307-875-3639 www.whsmithpc.com</p>	LEGEND		LOCATION: CROW VALLEY 7-62-22-2H WITHIN THE SE/4 SW/4, SECTION 22, T 7 N, R 62 W, 6TH PM. WELD COUNTY, COLORADO	MARATHON OIL COMPANY PO BOX 3128, HOUSTON TX, 77253 5555 SAN FELIPE, HOUSTON TX, 77056	
	SILT FENCE ———— EXISTING FENCE —●—●— BRUSH BERM —w—w—w—w—			STORM WATER PREVENTION PLAN	
DRAWN BY: LAL PROJECT NO: 762222H REVISIONS:	CHECKED BY: RAW JOB NO: 2011001			SCALE: 1"=100' DATE: 01/30/2012	EXHIBIT "M" SHEET 12 of 14



HORIZONTAL SCALE: 1"=100'
 VERTICAL SCALE: 1"=20'



**WILLIAM H. SMITH
& ASSOCIATES P.C.**
 SURVEYING CONSULTANTS
 550 EAST SECOND NORTH PHONE: 307-875-3638
 GREEN RIVER, WY 307-875-3639
 www.whsmithpc.com

DRAWN BY: LAL	CHECKED BY: RAW
PROJECT NO: 762222H	JOB NO: 2011001
REVISIONS:	

CONFIDENTIALITY NOTES:
 The information contained in this plot is legally privileged and confidential information intended only for the use of the recipients. If you are not the intended recipients, you are hereby notified that any use, dissemination, distribution or copying of this information is strictly prohibited.

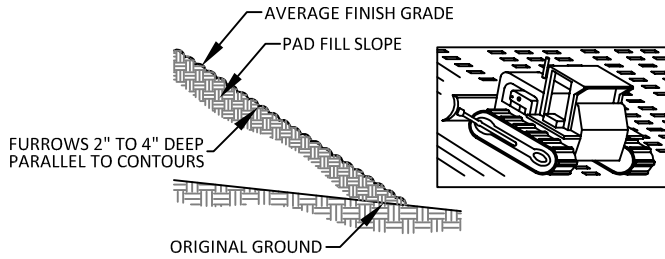
LOCATION:
 CROW VALLEY
 7-62-22-2H
 WITHIN THE SE/4
 SW/4, SECTION 22,
 T 7 N, R 62 W,
 6TH PM.
 WELD COUNTY,
 COLORADO

MARATHON OIL COMPANY
 PO BOX 3128, HOUSTON TX, 77253
 5555 SAN FELIPE, HOUSTON TX, 77056

**STORM WATER PREVENTION
 CROSS SECTIONS**

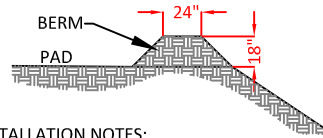
SCALE: AS NOTED	EXHIBIT "N"
DATE: 01/30/2012	SHEET 13 of 14

A. FILL SLOPE TRACKING DETAILS



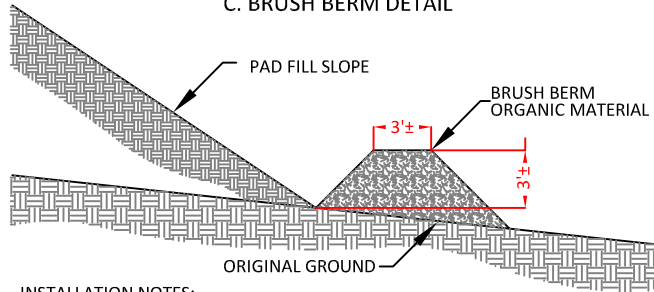
- INSTALLATION NOTES:**
1. DISTURBED SURFACES SHALL BE ROUGHENED USING RIPPING OR TILLING EQUIPMENT ON THE CONTOURS OR TRACKING UP AND DOWN THE SLOPE USING EQUIPMENT TREADS

B. EARTHEN BERM DETAIL



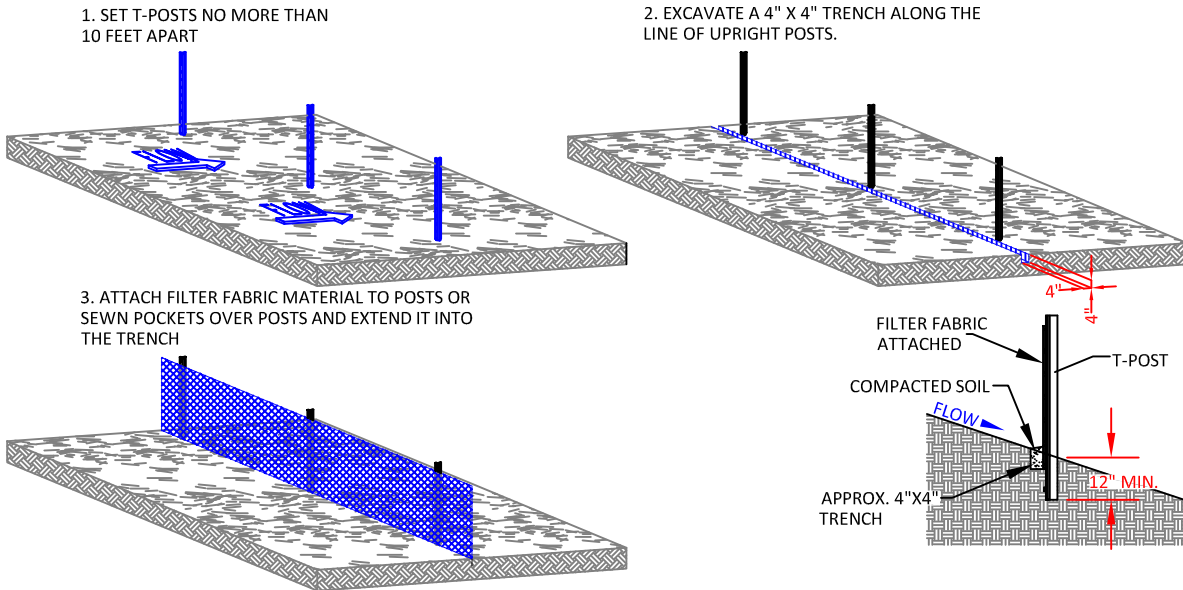
- INSTALLATION NOTES:**
1. BERM SHALL BE CONSTRUCTED OF WELL COMPACTED GRANULAR MATERIAL.
 2. BERM SHALL BE CONSTRUCTED ON THE PERIMETER OF THE PAD IN ALL AREAS THAT COULD RECEIVE STORMWATER RUNOFF.
 3. DIMENSIONS ARE APPROXIMATE. FIELD CONDITIONS WILL DETERMINE ACTUAL DIMENSIONS OF STRUCTURE.

C. BRUSH BERM DETAIL




- INSTALLATION NOTES:**
1. BERM TO BE CONSTRUCTED AFTER SITE HAS BEEN GRUBBED PRIOR TO PAD CONSTRUCTION.
 2. ONSITE ORGANIC MATERIAL TO BE PUSHED INTO BERM ON EDGE PERIMETER OF FILL SLOPE IN A MANNER NOT TO CREATE ADDITIONAL DISTURBANCE BEYOND THE CATCH LINE.
 3. BERM TO BE COMPACTED WITH FRONT END LOADER BUCKET OR SIMILAR METHOD TO ACHIEVE ADEQUATE COMPACTION.

D. SILT FENCE DETAILS



CONFIDENTIALITY NOTES:

The information contained in this plat is legally privileged and confidential information intended only for the use of the recipients. If you are not the intended recipients, you are hereby notified that any use, dissemination, distribution or copying of this information is strictly prohibited.

 <p>WILLIAM H. SMITH & ASSOCIATES P.C. SURVEYING CONSULTANTS 550 EAST SECOND NORTH PHONE: 307-875-3638 GREEN RIVER, WY 307-875-3639 www.whsmithpc.com</p>	USED ON THIS SITE		<p>LOCATION: CROW VALLEY 7-62-22-2H WITHIN THE SE/4 SW/4, SECTION 22, T 7 N, R 62 W, 6TH PM. WELD COUNTY, COLORADO</p>	<p>MARATHON OIL COMPANY PO BOX 3128, HOUSTON TX, 77253 5555 SAN FELIPE, HOUSTON TX, 77056</p>
	<p>DRAWN BY: LAL CHECKED BY: RAW PROJECT NO: 762222H JOB NO: 2011001 REVISIONS:</p>	<p>A: FILL SLOPE TRACKING B: EARTHEN BERM AT TOP OF SLOPE AROUND FILL SECTIONS C: BRUSH BERM AT TOE OF SLOPE AROUND FILL SECTIONS D. SILT FENCE</p>		