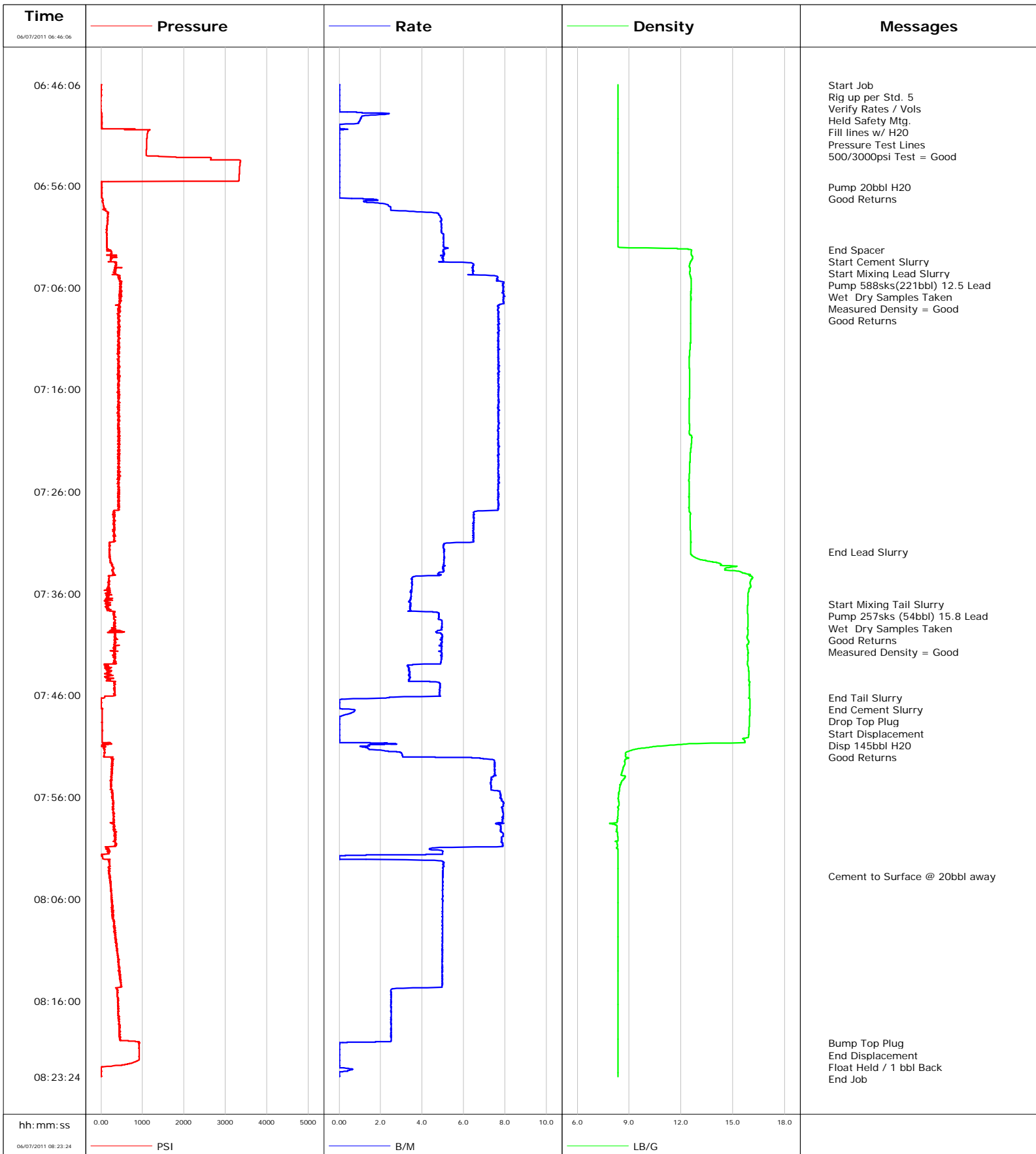


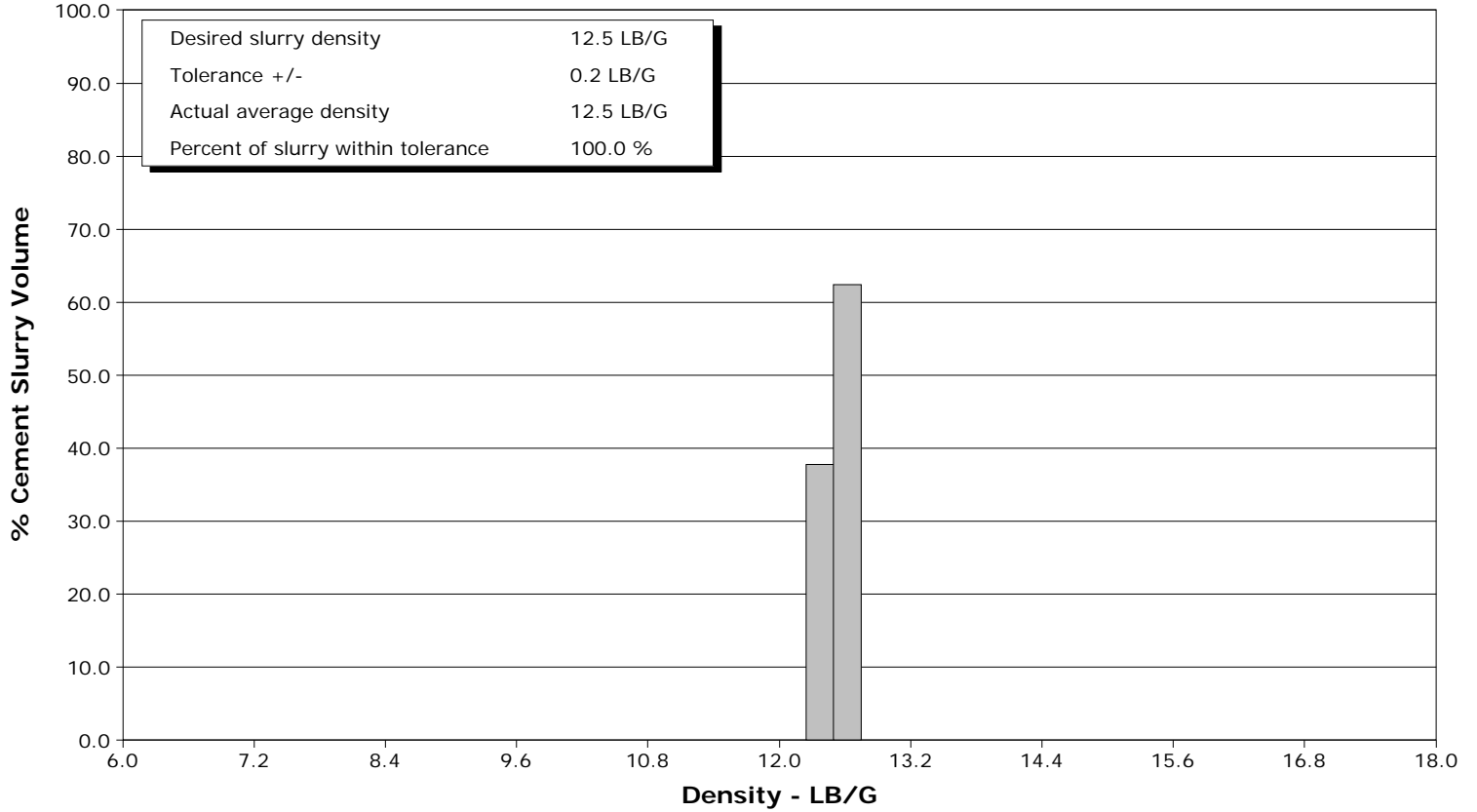
Well	Orchard Unit 23-10HM	Client	Encana Oil Gas
Field	Orchard Unit	SIR No.	568678
Engineer	B. Farnham	Job Type	10.75" Surface
Country	United States	Job Date	6-7-2011



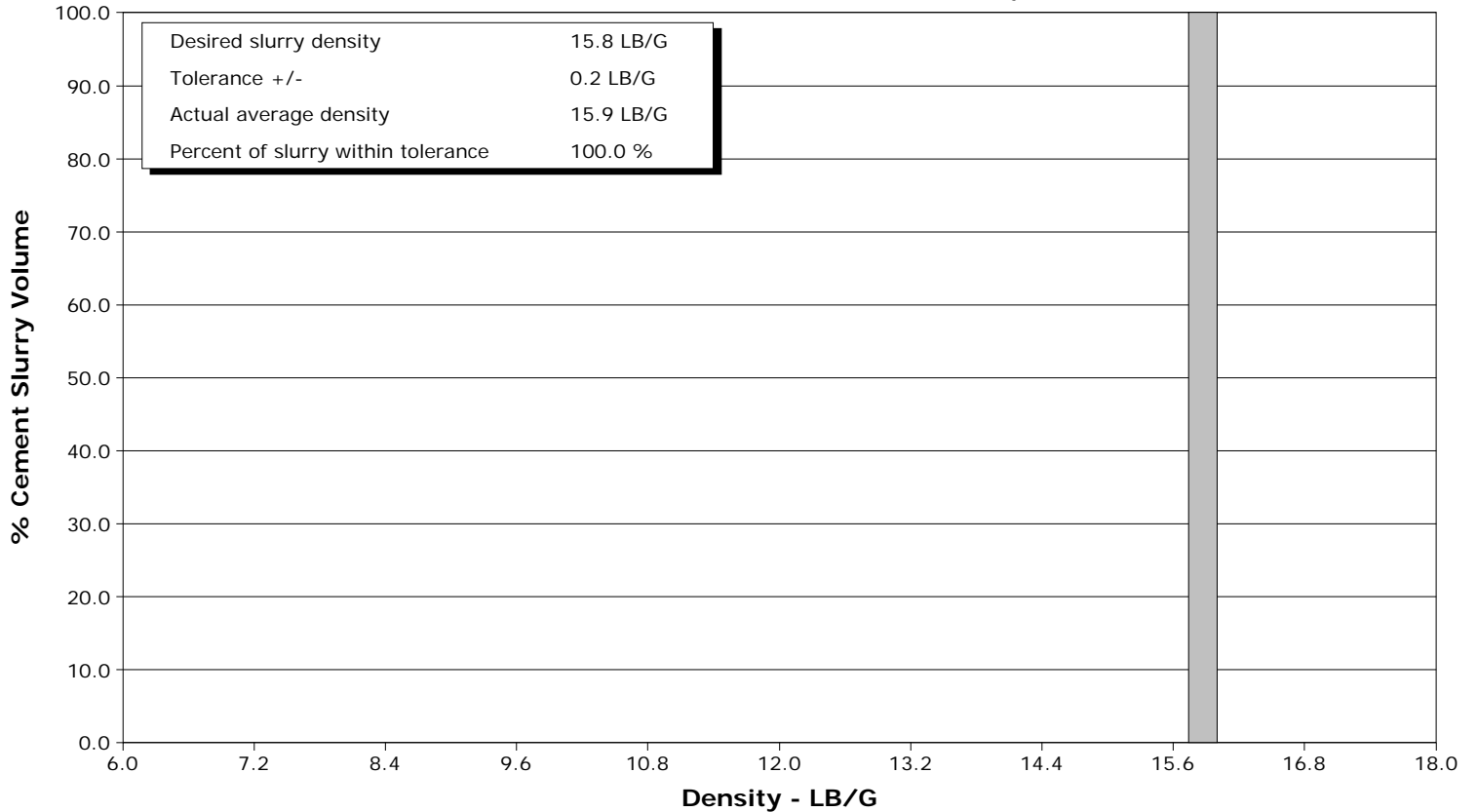
Well Orchard Unit 23-10HM
Field Orchard Unit
Engineer B. Farnham
Country United States

Client Encana Oil Gas
SIR No. 568678
Job Type 10.75" Surface
Job Date 6-7-2011

Lead Slurry - 06/07/2011 07:02:39 to 06/07/2011 07:31:57



Tail Slurry - 06/07/2011 07:37:06 to 06/07/2011 07:46:15



				Customer		Job Number	
				Encana Oil & Gas		568678	
Well		Location (legal)		Schlumberger Location		Job Start	
Orchard Unit 23-10HM 23-10HM		Patterson 330		Grand Junction		Jun/07/2011	
Field		Formation Name/Type		Deviation	Bit Size	Well MD	Well TVD
Orchard Unit		shale		deg	14.8 in	1530.0 ft	1530.0 ft
County		State/Province		BHP	BHST	BHCT	Pore Press. Gradient
Garfield		Colorado		psi	100 degF	80 degF	lb/gal
Well Master		API/UWI					
0631279965		-					
Rig Name	Drilled For	Service Via	Casing/Liner				
Patterson 330	Gas	Land					
Offshore Zone	Well Class	Well Type	Depth, ft	Size, in	Weight, lb/ft	Grade	Thread
	New	New Well Completion	40.0	20.0	94.0		
			1530.0	10.8	40.5	j-55	BUTT
Drilling Fluid Type		Max. Density	Plastic Viscosity		Tubing/Drill Pipe		
Bentonite		9.30 lb/gal	24.000 cP				
Service Line	Job Type	T/D	Depth, ft	Size, in	Weight, lb/ft	Grade	Thread
Cementing	10.75" Surface			0.0	0.0		
				0.0	0.0		
Max. Allowed Tub. Press	Max. Allowed Ann. Press	WH Connection		Perforations/Open Hole			
3000 psi	1500 psi	Single Cement head					
Service Instructions	Top, ft	Bottom, ft	shot/ft	No. of Shots	Total Interval		
Pump 20bbls H2O 588sks (221bbl) 12.5ppg Lead (80%XS) 257sks (54bbl) 15.8 Tail Disp. w/ H2O	ft	ft			ft		
	ft	ft			Diameter		
	ft	ft			in		
Treat Down		Displacement		Packer Type		Packer Depth	
Casing		145.5 bbl				ft	
Tubing Vol.		Casing Vol.		Annular Vol.		Openhole Vol.	
bbl		145.5 bbl		270.0 bbl		313.0 bbl	
Casing/Tubing Secured		1 Hole Vol. Circulated prior to Cement		Casing Tools		Squeeze Job	
<input checked="" type="checkbox"/>		<input checked="" type="checkbox"/>					
Lift Pressure		Shoe Type		Shoe Depth		Squeeze Type	
682 psi		Guide		1528.0 ft			
Pipe Rotated		Pipe Reciprocated		Stage Tool Type		Tool Depth	
<input type="checkbox"/>		<input type="checkbox"/>				ft	
No. Centralizers		Top Plugs	Bottom Plugs	Stage Tool Depth		Tail Pipe Size	
		1		ft		in	
Cement Head Type		Job Scheduled For		Arrived on Location		Leave Location	
Single		Jun/07/2011 02:00		Jun/07/2011 02:00		Jun/07/2011 08:00	
		Collar Type		Collar Depth		Tail Pipe Depth	
		Float		1482.0 ft		ft	
		Sqz. Total Vol.					
		bbl					
Date	Time 24-hr clock	Treating Pressure PSI	Flow Rate B/M	Density LB/G	Volume BBL	Message	
06/07/2011	06:46:06	2	0.0	8.37	0.0	Started Acquisition	
06/07/2011	06:46:07	2	0.0	8.37	0.0	Start Job	
06/07/2011	06:46:09	2	0.0	8.37	0.0	Rig up per Std. 5	
06/07/2011	06:46:10	1	0.0	8.37	0.0	Verify Rates / Vols	
06/07/2011	06:46:36	2	0.0	8.37	0.0		
06/07/2011	06:47:06	2	0.0	8.37	0.0		
06/07/2011	06:47:36	-2	0.0	8.37	0.0		
06/07/2011	06:48:06	-2	0.0	8.37	0.0		
06/07/2011	06:48:36	-1	0.0	8.37	0.0		
06/07/2011	06:49:06	20	1.5	8.37	0.6		
06/07/2011	06:49:36	21	1.0	8.37	1.1		
06/07/2011	06:50:06	16	0.0	8.36	1.5		
06/07/2011	06:50:14	17	0.0	8.36	1.5	Pressure Test Lines	
06/07/2011	06:50:15	17	0.0	8.36	1.5	500/3000psi Test = Good	
06/07/2011	06:50:36	1152	0.0	8.36	1.5		
06/07/2011	06:51:06	1111	0.0	8.36	1.5		
06/07/2011	06:51:36	1105	0.0	8.36	1.5		
06/07/2011	06:52:06	1099	0.0	8.36	1.5		
06/07/2011	06:52:36	1095	0.0	8.36	1.5		
06/07/2011	06:53:06	1122	0.0	8.36	1.5		
06/07/2011	06:53:36	3363	0.0	8.36	1.5		

Well		Field		Job Start		Customer		Job Number	
Orchard Unit 23-10HM 23-10HM		Orchard Unit		Jun/07/2011		Encana Oil & Gas		568678	
Date	Time 24-hr clock	Treating Pressure PSI	Flow Rate B/M	Density LB/G	Volume BBL	Message			
06/07/2011	06:54:36	3337	0.0	8.36	1.5				
06/07/2011	06:55:06	3331	0.0	8.36	1.5				
06/07/2011	06:55:36	1950	0.0	8.36	1.5				
06/07/2011	06:56:06	17	0.0	8.36	1.5				
06/07/2011	06:56:08	17	0.0	8.36	1.5	Pump 20bbl H2O			
06/07/2011	06:56:10	17	0.0	8.36	1.5	Good Returns			
06/07/2011	06:56:36	16	0.0	8.36	1.5				
06/07/2011	06:57:06	16	0.0	8.36	1.5				
06/07/2011	06:57:36	35	1.2	8.36	2.0				
06/07/2011	06:58:06	66	2.5	8.36	3.0				
06/07/2011	06:58:36	164	3.9	8.36	4.4				
06/07/2011	06:59:06	168	4.9	8.36	6.8				
06/07/2011	06:59:36	162	4.9	8.36	9.2				
06/07/2011	07:00:06	140	4.9	8.36	11.7				
06/07/2011	07:00:36	128	4.9	8.36	14.2				
06/07/2011	07:01:06	142	5.0	8.36	16.7				
06/07/2011	07:01:36	144	5.0	8.36	19.2				
06/07/2011	07:02:06	139	5.2	9.02	21.7				
06/07/2011	07:02:16	137	5.0	12.54	22.6	End Spacer			
06/07/2011	07:02:34	247	5.0	12.58	24.1	Start Cement Slurry			
06/07/2011	07:02:36	243	5.0	12.58	24.2				
06/07/2011	07:02:39	264	5.0	12.58	24.5	Start Mixing Lead Slurry			
06/07/2011	07:02:40	245	5.0	12.58	24.6	Pump 588sks(221bbl) 12.5 Lead			
06/07/2011	07:02:41	233	5.0	12.58	24.7	Wet Dry Samples Taken			
06/07/2011	07:02:42	233	5.0	12.58	24.7	Good Returns			
06/07/2011	07:03:06	231	4.9	12.67	26.7				
06/07/2011	07:03:36	381	6.4	12.53	29.3				
06/07/2011	07:04:06	347	6.4	12.52	32.6				
06/07/2011	07:04:36	338	6.5	12.51	35.8				
06/07/2011	07:05:06	462	7.6	12.57	39.4				
06/07/2011	07:05:36	463	7.9	12.59	43.2				
06/07/2011	07:06:06	461	7.9	12.58	47.2				
06/07/2011	07:06:36	463	7.9	12.57	51.1				
06/07/2011	07:07:06	453	7.9	12.57	55.1				
06/07/2011	07:07:36	457	7.9	12.56	59.1				
06/07/2011	07:08:06	403	7.7	12.57	62.9				
06/07/2011	07:08:36	440	7.7	12.57	66.7				
06/07/2011	07:09:06	439	7.7	12.57	70.6				
06/07/2011	07:09:36	441	7.7	12.55	74.4				
06/07/2011	07:10:06	439	7.7	12.56	78.3				
06/07/2011	07:10:36	414	7.7	12.56	82.1				
06/07/2011	07:11:06	414	7.7	12.55	85.9				
06/07/2011	07:11:36	429	7.7	12.54	89.8				
06/07/2011	07:12:06	420	7.7	12.52	93.6				
06/07/2011	07:12:36	402	7.7	12.49	97.4				
06/07/2011	07:13:06	420	7.7	12.48	101.3				
06/07/2011	07:13:36	435	7.7	12.48	105.1				
06/07/2011	07:14:06	424	7.7	12.49	109.0				
06/07/2011	07:14:36	433	7.7	12.49	112.8				
06/07/2011	07:15:06	427	7.7	12.51	116.6				
06/07/2011	07:15:36	402	7.7	12.51	120.5				
06/07/2011	07:16:06	432	7.7	12.50	124.3				
06/07/2011	07:16:36	415	7.7	12.49	128.2				
06/07/2011	07:17:06	428	7.7	12.48	132.0				

Well		Field		Job Start		Customer		Job Number	
Orchard Unit 23-10HM 23-10HM		Orchard Unit		Jun/07/2011		Encana Oil & Gas		568678	
Date	Time 24-hr clock	Treating Pressure PSI	Flow Rate B/M	Density LB/G	Volume BBL	Message			
06/07/2011	07:18:06	408	7.7	12.48	139.7				
06/07/2011	07:18:36	445	7.7	12.47	143.5				
06/07/2011	07:19:06	413	7.7	12.46	147.4				
06/07/2011	07:19:36	415	7.7	12.50	151.2				
06/07/2011	07:20:06	451	7.7	12.48	155.0				
06/07/2011	07:20:36	402	7.7	12.62	158.9				
06/07/2011	07:21:06	431	7.7	12.61	162.7				
06/07/2011	07:21:36	439	7.7	12.58	166.5				
06/07/2011	07:22:06	417	7.7	12.55	170.4				
06/07/2011	07:22:36	402	7.7	12.53	174.2				
06/07/2011	07:23:06	417	7.7	12.51	178.1				
06/07/2011	07:23:36	439	7.7	12.51	181.9				
06/07/2011	07:24:06	409	7.7	12.50	185.7				
06/07/2011	07:24:36	441	7.7	12.47	189.6				
06/07/2011	07:25:06	423	7.7	12.46	193.4				
06/07/2011	07:25:36	410	7.7	12.47	197.3				
06/07/2011	07:26:06	424	7.7	12.47	201.1				
06/07/2011	07:26:36	411	7.6	12.46	204.9				
06/07/2011	07:27:06	437	7.7	12.46	208.8				
06/07/2011	07:27:36	438	7.7	12.46	212.6				
06/07/2011	07:28:06	330	6.5	12.54	216.2				
06/07/2011	07:28:36	308	6.5	12.53	219.4				
06/07/2011	07:29:06	310	6.5	12.53	222.7				
06/07/2011	07:29:36	307	6.5	12.52	225.9				
06/07/2011	07:30:06	312	6.5	12.57	229.2				
06/07/2011	07:30:36	324	6.5	12.56	232.4				
06/07/2011	07:31:06	196	5.1	12.57	235.5				
06/07/2011	07:31:36	209	5.0	12.56	238.0				
06/07/2011	07:31:57	210	5.0	12.56	239.8	End Lead Slurry			
06/07/2011	07:32:06	210	5.1	12.56	240.6				
06/07/2011	07:32:36	219	5.1	12.96	243.1				
06/07/2011	07:33:06	259	5.0	14.28	245.6				
06/07/2011	07:33:36	289	5.0	14.54	248.1				
06/07/2011	07:34:06	302	4.7	15.84	250.6				
06/07/2011	07:34:36	201	3.5	16.09	252.6				
06/07/2011	07:35:06	210	3.5	16.01	254.4				
06/07/2011	07:35:36	213	3.5	15.93	256.2				
06/07/2011	07:36:06	243	3.5	15.88	257.9				
06/07/2011	07:36:36	97	3.4	15.87	259.6				
06/07/2011	07:37:06	176	3.4	15.86	261.3	Start Mixing Tail Slurry			
06/07/2011	07:37:07	237	3.5	15.86	261.4	Pump 257sks (54bbl) 15.8 Lead			
06/07/2011	07:37:08	237	3.5	15.86	261.4	Good Returns			
06/07/2011	07:37:36	163	3.4	15.84	263.0				
06/07/2011	07:38:06	298	4.8	15.86	265.2				
06/07/2011	07:38:36	329	4.9	15.86	267.6				
06/07/2011	07:39:06	308	5.0	15.88	270.0				
06/07/2011	07:39:36	241	4.9	15.86	272.5				
06/07/2011	07:40:06	347	5.0	15.86	274.9				
06/07/2011	07:40:36	321	4.9	15.88	277.4				
06/07/2011	07:41:06	443	4.9	15.82	279.9				
06/07/2011	07:41:36	328	4.9	15.87	282.3				
06/07/2011	07:42:06	334	4.9	15.86	284.8				
06/07/2011	07:42:36	336	4.9	15.86	287.3				
06/07/2011	07:43:06	177	3.3	15.87	289.5				

Well		Field		Job Start		Customer		Job Number	
Orchard Unit 23-10HM 23-10HM		Orchard Unit		Jun/07/2011		Encana Oil & Gas		568678	
Date	Time 24-hr clock	Treating Pressure PSI	Flow Rate B/M	Density LB/G	Volume BBL	Message			
06/07/2011	07:44:06	151	3.4	15.93	292.9				
06/07/2011	07:44:36	124	3.3	15.93	294.6				
06/07/2011	07:45:06	328	4.9	15.96	296.9				
06/07/2011	07:45:36	332	4.9	15.96	299.4				
06/07/2011	07:46:06	90	4.9	15.96	301.8				
06/07/2011	07:46:15	89	2.3	15.92	302.2	End Tail Slurry			
06/07/2011	07:46:25	11	0.0	15.99	302.4	End Cement Slurry			
06/07/2011	07:46:36	11	0.0	16.00	302.4				
06/07/2011	07:47:06	4	0.0	16.00	302.4				
06/07/2011	07:47:36	34	0.7	15.98	302.6				
06/07/2011	07:48:06	29	0.0	15.96	302.8				
06/07/2011	07:48:17	29	0.0	15.96	302.8	Drop Top Plug			
06/07/2011	07:48:19	29	0.0	15.96	302.8	Start Displacement			
06/07/2011	07:48:20	29	0.0	15.96	302.8	Disp 145bbl H2O			
06/07/2011	07:48:21	30	0.0	15.96	302.8	Good Returns			
06/07/2011	07:48:36	27	0.0	15.96	302.8				
06/07/2011	07:49:06	29	0.0	15.94	302.8				
06/07/2011	07:49:36	28	0.0	15.93	302.8				
06/07/2011	07:50:06	29	0.0	15.90	302.8				
06/07/2011	07:50:36	28	0.0	15.70	302.8				
06/07/2011	07:51:06	61	1.3	10.21	303.6				
06/07/2011	07:51:36	89	2.9	8.83	304.5				
06/07/2011	07:52:06	260	6.0	8.90	306.1				
06/07/2011	07:52:36	261	7.5	8.76	309.7				
06/07/2011	07:53:06	269	7.5	8.66	313.5				
06/07/2011	07:53:36	249	7.5	8.58	317.2				
06/07/2011	07:54:06	270	7.4	8.74	320.9				
06/07/2011	07:54:36	250	7.3	8.54	324.6				
06/07/2011	07:55:06	241	7.3	8.44	328.3				
06/07/2011	07:55:36	291	7.8	8.40	332.0				
06/07/2011	07:56:06	295	7.8	8.36	335.9				
06/07/2011	07:56:36	281	7.9	8.40	339.8				
06/07/2011	07:57:06	282	7.8	8.37	343.8				
06/07/2011	07:57:36	287	7.9	8.36	347.7				
06/07/2011	07:58:06	315	7.9	8.35	351.7				
06/07/2011	07:58:36	276	7.8	7.92	355.6				
06/07/2011	07:59:06	316	7.8	8.29	359.5				
06/07/2011	07:59:36	358	7.9	8.34	363.4				
06/07/2011	08:00:06	360	7.8	8.35	367.3				
06/07/2011	08:00:36	340	7.9	8.31	371.3				
06/07/2011	08:01:06	174	4.3	8.35	374.5				
06/07/2011	08:01:36	75	5.0	8.36	377.0				
06/07/2011	08:02:06	92	0.0	8.35	377.3				
06/07/2011	08:02:36	198	5.0	8.35	379.6				
06/07/2011	08:03:06	201	5.0	8.35	382.1				
06/07/2011	08:03:36	203	5.0	8.35	384.6				
06/07/2011	08:03:44	211	5.0	8.35	385.2	Cement to Surface @ 20bbl away			
06/07/2011	08:04:06	217	5.0	8.35	387.1				
06/07/2011	08:04:36	239	5.0	8.35	389.6				
06/07/2011	08:05:06	246	5.0	8.35	392.1				
06/07/2011	08:05:36	257	5.0	8.35	394.6				
06/07/2011	08:06:06	252	5.0	8.35	397.1				
06/07/2011	08:06:36	266	5.0	8.35	399.5				
06/07/2011	08:07:06	299	5.0	8.36	402.0				

Well		Field		Job Start		Customer		Job Number	
Orchard Unit 23-10HM 23-10HM		Orchard Unit		Jun/07/2011		Encana Oil & Gas		568678	
Date	Time 24-hr clock	Treating Pressure PSI	Flow Rate B/M	Density LB/G	Volume BBL	Message			
06/07/2011	08:08:06	297	5.0	8.36	407.0				
06/07/2011	08:08:36	301	5.0	8.36	409.5				
06/07/2011	08:09:06	326	5.0	8.36	412.0				
06/07/2011	08:09:36	350	5.0	8.36	414.5				
06/07/2011	08:10:06	364	5.0	8.36	417.0				
06/07/2011	08:10:36	367	5.0	8.36	419.5				
06/07/2011	08:11:06	393	5.0	8.36	422.0				
06/07/2011	08:11:36	421	5.0	8.36	424.4				
06/07/2011	08:12:06	419	5.0	8.36	426.9				
06/07/2011	08:12:36	425	5.0	8.36	429.4				
06/07/2011	08:13:06	437	5.0	8.36	431.9				
06/07/2011	08:13:36	473	5.0	8.36	434.4				
06/07/2011	08:14:06	462	5.0	8.36	436.9				
06/07/2011	08:14:36	487	5.0	8.36	439.4				
06/07/2011	08:15:06	385	2.5	8.36	440.9				
06/07/2011	08:15:36	407	2.5	8.36	442.1				
06/07/2011	08:16:06	402	2.5	8.36	443.4				
06/07/2011	08:16:36	423	2.5	8.36	444.6				
06/07/2011	08:17:06	412	2.5	8.36	445.9				
06/07/2011	08:17:36	424	2.5	8.36	447.1				
06/07/2011	08:18:06	434	2.5	8.36	448.4				
06/07/2011	08:18:36	460	2.5	8.36	449.6				
06/07/2011	08:19:06	440	2.5	8.36	450.9				
06/07/2011	08:19:36	447	2.5	8.36	452.1				
06/07/2011	08:20:06	940	0.0	8.36	453.2				
06/07/2011	08:20:09	914	0.0	8.36	453.2	Bump Top Plug			
06/07/2011	08:20:10	914	0.0	8.36	453.2	End Displacement			
06/07/2011	08:20:36	917	0.0	8.36	453.2				
06/07/2011	08:21:06	917	0.0	8.36	453.2				
06/07/2011	08:21:36	918	0.0	8.36	453.2				
06/07/2011	08:21:46	918	0.0	8.36	453.2	Float Held / 1 bbl Back			
06/07/2011	08:22:06	731	0.0	8.36	453.2				
06/07/2011	08:22:36	6	0.4	8.36	453.2				
06/07/2011	08:23:06	9	0.0	8.36	453.4				

Post Job Summary

Average Pump Rates, bbl/min				Volume of Fluid Injected, bbl			
Slurry	N2	Mud	Maximum Rate	Total Slurry	Mud	Spacer	N2
5.6		0.0	8.0	453.4	0.0	22.5	
Treating Pressure Summary, psi				Breakdown Fluid			
Maximum	Final	Average	Bump Plug to	Breakdown	Type	Volume	Density
3365	7	393	980		FreshWater	300.0 bbl	8.34 lb/gal
Avg. N2 Percent	Designed Slurry Volume	Displacement	Mix Water Temp	Cement Circulated to Surface?	<input checked="" type="checkbox"/>	Volume	95.0 bbl
%	275.0 bbl	150.4 bbl	70 degF	Washed Thru Perfs	<input type="checkbox"/>	To	ft
Customer or Authorized Representative			Schlumberger Supervisor		Circulation Lost	<input type="checkbox"/>	Job Completed
Arvid Mosnes			B. Farnham		-	<input checked="" type="checkbox"/>	-