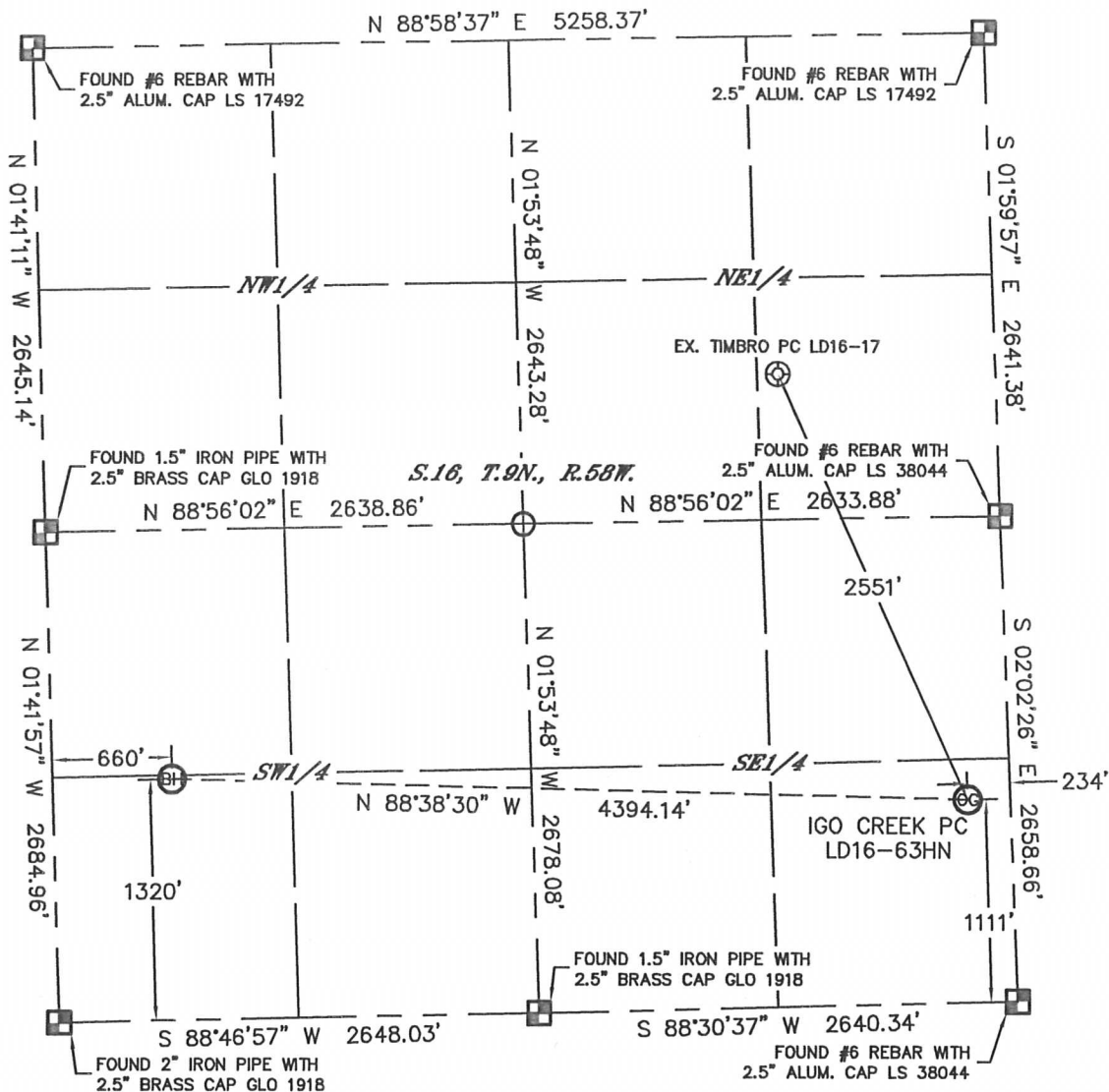


# WELL LOCATION CERTIFICATE

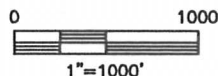
THIS MAP DOES NOT REPRESENT A BOUNDARY SURVEY

SECTION: 16  
TOWNSHIP: 9N  
RANGE: 58W



In accordance with a request from Erik Van Decar with Noble Energy Inc. Lat40°, Inc. has determined the surface location of the IGO CREEK PC LD16-63HN to be 1111' from the SOUTH line and 234' from the EAST line and the bottom hole to be 1320' from the SOUTH line and 660' from the WEST line as measured at right angles from the section lines of Section 16, Township 9 North, Range 58 West of the Sixth Principal Meridian, County of Weld, State of Colorado.

I hereby state that this Well Location Certificate was prepared by me, or under my direct supervision, that the fieldwork was completed on 01/30/12, for and on behalf of Noble Energy Inc. That this is not a Land Survey Plat or an Improvement Survey Plat, and that it is not to be relied upon for establishment of fence, building, or other future improvement lines.



## NOTE:

- 1) Bearings shown are Grid Bearings of the Colorado State Plane Coordinate System, North Zone, North American Datum 1983/2007. The lineal dimensions as contained herein are based upon the "U.S. Survey Foot."
- 2) Ground elevations are based on an observed GPS elevation (NAVD 1988 DATUM).
- 3) NEAREST EXISTING WELL: TIMBRO PC LD16-17, 2551' NW
- 4) IMPROVEMENTS: See LOCATION DRAWING for all visible improvements within 400' of disturbed area.
- 5) SURFACE USE: RANGELAND
- 6) INSTRUMENT OPERATOR: ADAM KELLY

## NOTE

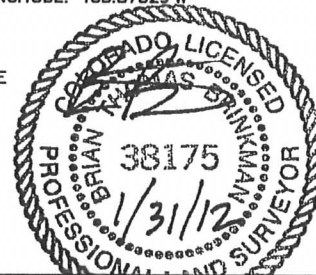
According to Colorado law, you must commence any legal action based upon any defect in this W.L.C. within three years after you discover such defect. In no event, may any action based upon any defect in this survey be commenced more than ten years after the date of the certificate shown hereon. (13-80-105 C.R.S.)

## LEGEND

- = ALIQUOT MONUMENT AS DESCRIBED
- = CALCULATED POSITION

SURFACE LOCATION  
LATITUDE: 40.74708°N  
LONGITUDE: 103.86045°W  
PDOP: 1.2  
ELEV: 4702'  
1/4, 1/4: SE1/4SE1/4  
NEAREST PROPERTY LINE: 234' E

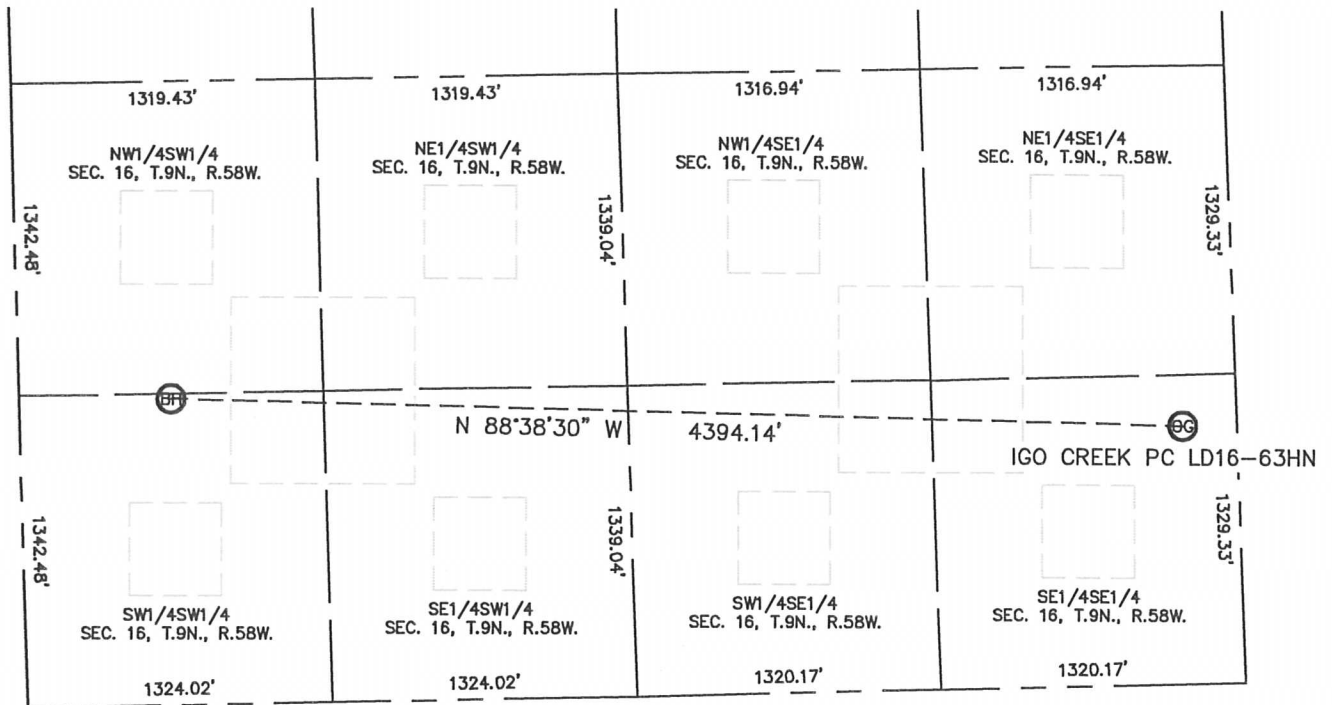
BOTTOM HOLE  
LATITUDE: 40.74759°N  
LONGITUDE: 103.87629°W  
DATE: rev 01/30/12  
PROJECT#: 2012001



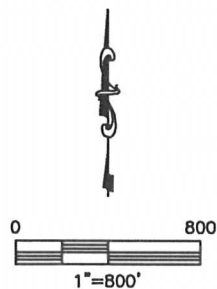
Brian T. Brinkman—On Behalf of Lat40°, Inc.  
Colorado Licensed Professional Land Surveyor No. 38175  
DATE: rev 01/30/12  
PROJECT#: 2012001

# SITE SKETCH

SECTION: 16  
TOWNSHIP: 9N  
RANGE: 58W



NOTE: NO EXISTING WELLS ALONG PROPOSED WELL BORE.



DATE: rev 01/30/12  
PROJECT#: 2012001