

HALLIBURTON

BOREHOLE VOLUME PLOT

HALLIBURTON										BOREHOLE VOLUME PLOT																			
COMPANY					LARAMIE ENERGY II, LCC					COMPANY					LARAMIE ENERGY II, LCC														
WELL					HAWXHURST 17-05B					WELL					HAWXHURST 17-05B														
FIELD					BRUSH CREEK					FIELD					BRUSH CREEK														
COUNTY					MESA					COUNTY					MESA														
STATE					CO					STATE					CO														
Permanent Datum					GL					Sect. 17					Twp. 9 S					Rge. 94 W					Elev.: K.B. 6807.0 ft				
Log measured from					KB																				D.F. 6806.0 ft				
Drilling measured from					KB																				G.L. 6786.0 ft				
Date					15-Nov-11																								
Run No.					ONE																								
Depth - Driller					11334.00 ft																								
Depth - Logger					11331.0 ft																								
Bottom - Logged Interval					11309.0 ft																								
Top - Logged Interval					7170.0 ft																								
Casing - Driller					7.000 in @ 7172.0 ft																				@				
Casing - Logger					7170.0 ft																								
Bit Size					6.250 in															@									
Type Fluid in Hole					WBM																								
Density					12.9 ppq					84.00 s/qt																			
PH					8.00 pH					6.0 cp/m																			
Source of Sample					MUD TANK																								
Rm @ Meas. Temperature					1.580 ohmm @ 58.20 degF										@										@				
Rmf @ Meas. Temperature					0.91 ohmm @ 72.30 degF										@										@				
Rmc @ Meas. Temperature					2.360 ohmm @ 69.50 degF										@										@				
Source Rmf					Rmc					MEAS					MEAS														
Rm @ BHT					0.37 ohmm @ 272.0 degF										@										@				
Time Since Circulation					8.0 hr																								
Time on Bottom					15-Nov-11 01:25																								
Max. Rec. Temperature					272.0 degF @ 11331.0 ft										@										@				
Equipment					11014853					GL, CO																			
Recorded By					W. MATSON																								
Witnessed By					KELLY CLAUSON																								

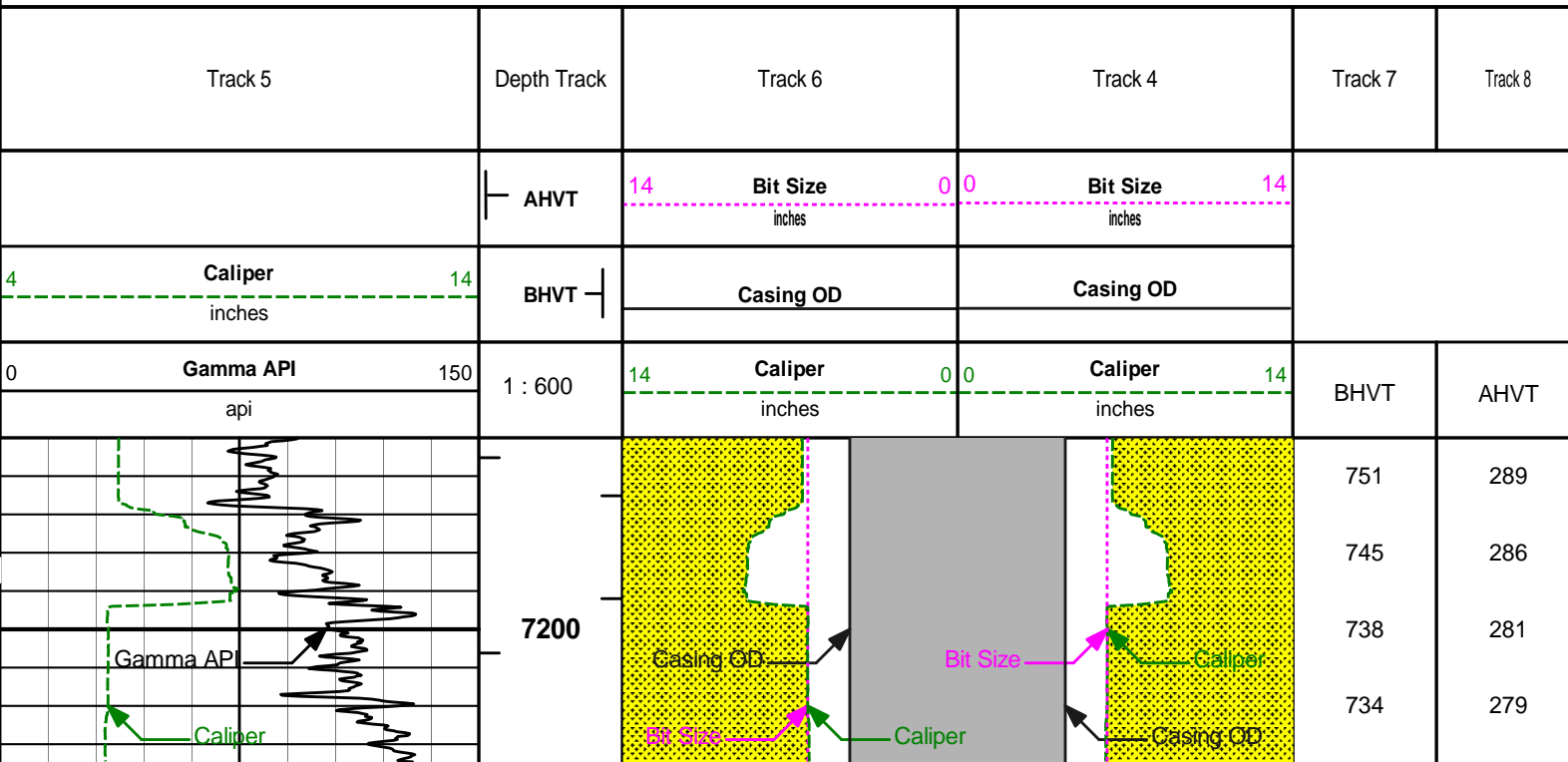
Fold here

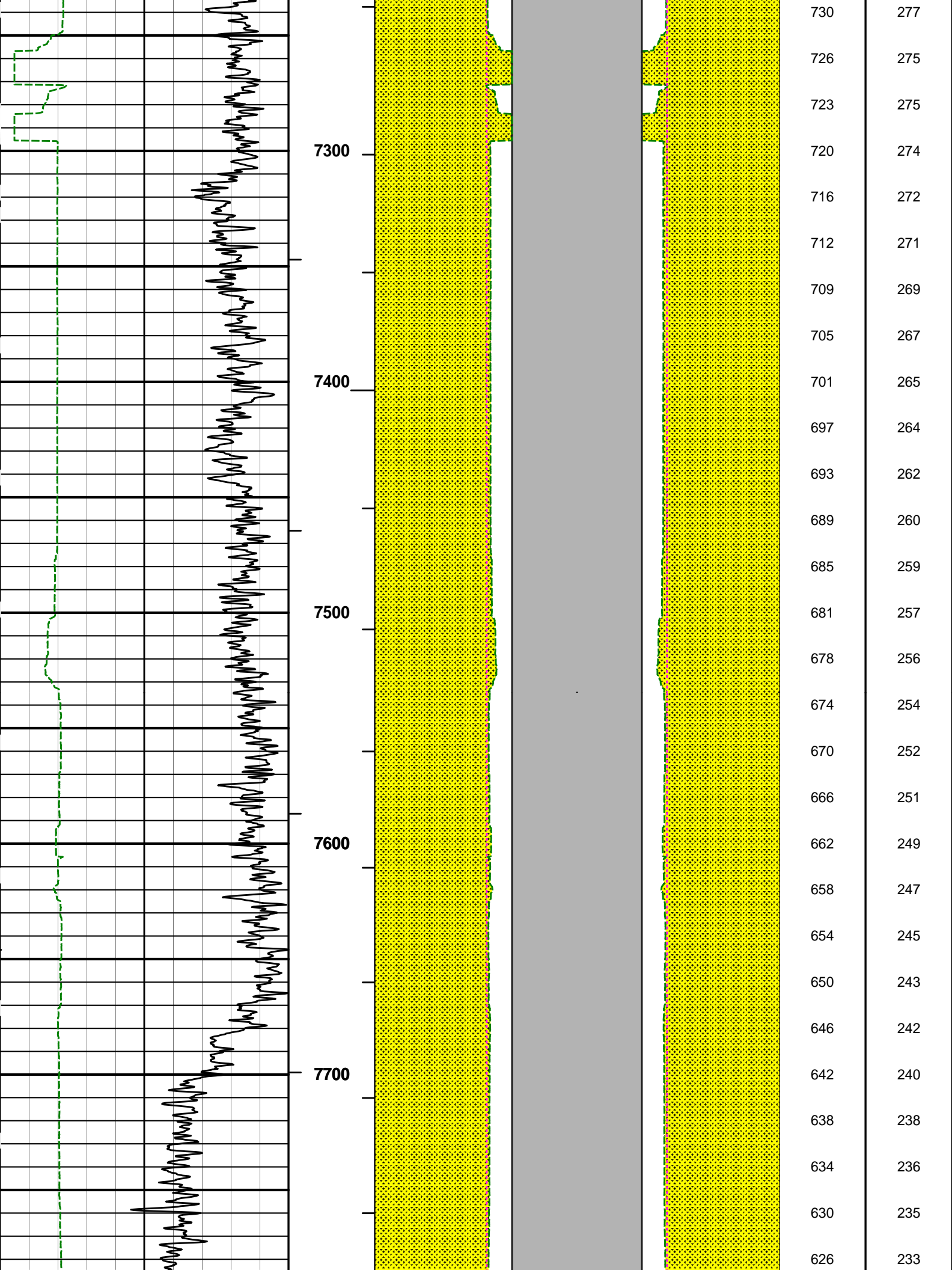
Service Ticket No.: 903675					API Serial No.: 05077101590000					PGM Version: WL INSITE R3.4.2 (Build 2)					
CHANGE IN MUD TYPE OR ADDITIONAL SAMPLE							RESISTIVITY SCALE CHANGES								
Date	Sample No.						Type Log	Depth	Scale Up Hole		Scale Down Hole				
Depth-Driller															
Type Fluid in Hole															
Density	Viscosity														
Ph	Fluid Loss														
Source of Sample							RESISTIVITY EQUIPMENT DATA								
Rm @ Meas. Temp		@			@		Run No.	Tool Type & No.	Pad Type		Tool Pos.		Other		
Rmf @ Meas. Temp.		@			@		ONE	ACRT 9019051E	N/A		1.5" S.O.		N/A		
Rmc @ Meas. Temp.		@			@			E9775							
Source Rmf	Rmc														
Rm @ BHT		@			@										
Rmf @ BHT		@			@										
Rmc @ BHT		@			@										
EQUIPMENT DATA															
GAMMA				ACOUSTIC				DENSITY				NEUTRON			
Run No.	ONE			Run No.				Run No.	ONE			Run No.	ONE		
Serial No.	11005602			Serial No.				Serial No.	10951300			Serial No.	10993887		
Model No.	GTET			Model No.				Model No.	SDLT			Model No.	DSNT		
Diameter	3.625"			No. of Cent.				Diameter	4.5"			Diameter	3.625"		
Detector Model No.	102A			Spacing				Log Type	GAMMA/GAMMA			Log Type	THERM/THERM		
Type	SCINT							Source Type	Cs-137			Source Type	Am241Be		
Length	8"			LSA [Y/N]				Serial No.	5153 GW			Serial No.	DSN-388		
Distance to Source	12'			FWDA [Y/N]				Strength	1.5 Ci			Strength	15 Ci		

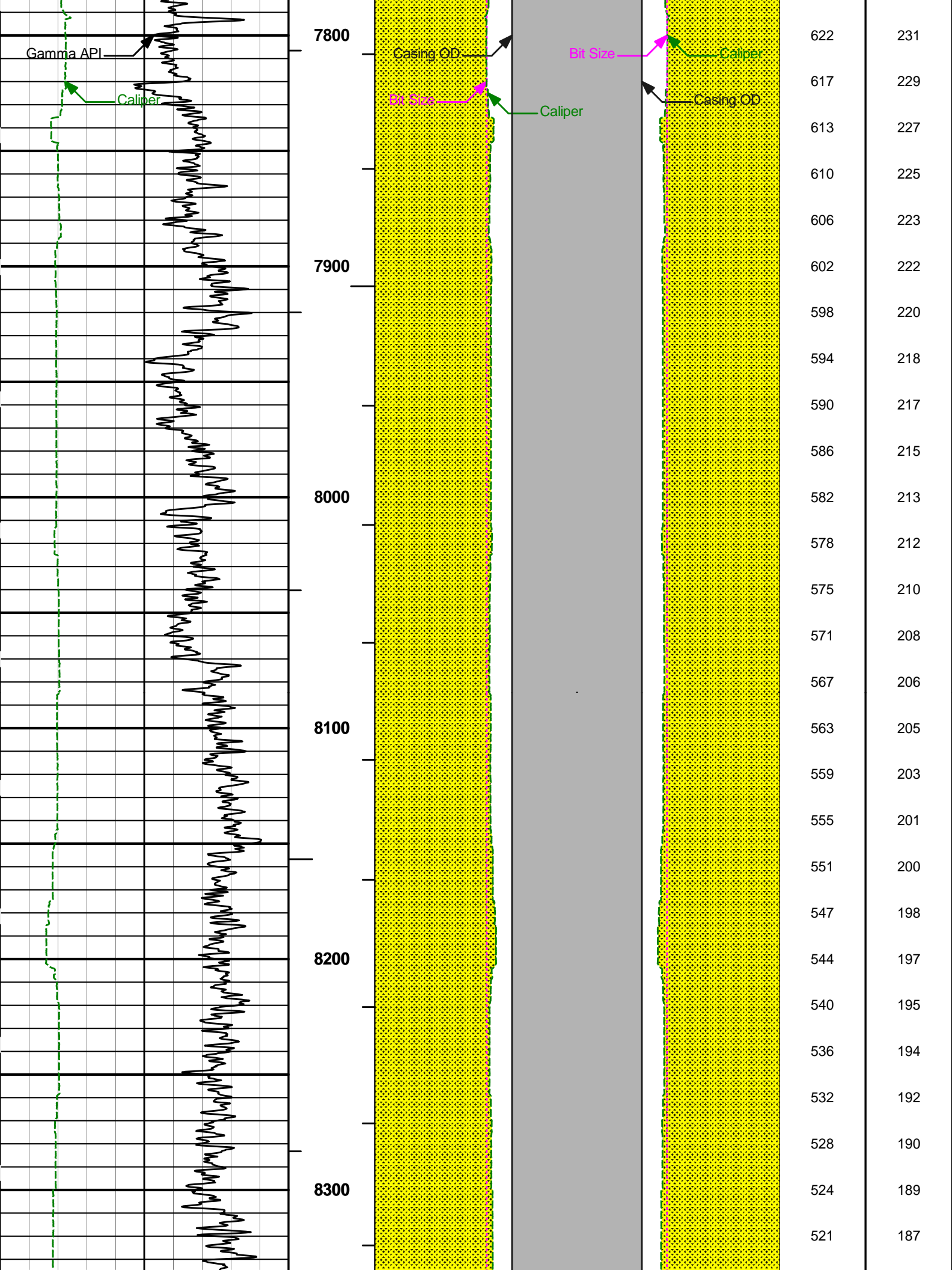
GENERAL			GAMMA		ACOUSTIC		DENSITY		NEUTRON					
Run	Depth		Speed	Scale		Scale		Matrix	Scale		Matrix	Scale		Matrix
No.	From	To	ft/min	L	R	L	R		L	R		L	R	
ONE	TD	CSG	REC	0	150				30%	-10%	2.65 g/cc	30%	-10%	SAND
DIRECTIONAL INFORMATION														
Maximum Deviation @								KOP @						
Remarks:														
RWCH-GTET-DSNT-SDLT-ACRT RAN IN COMBINATIONS														
ANNULAR HOLE VOLUME CALCULATED FOR 4.5" PRODUCTION CASING														
TENSION PULLS MAY AFFECT TOOL RESPONSE														
YOUR CREW TODAY: N. EHLERS, M. BRANDEL, B. CALDERON RIG: ENSIGN 55														
THANKYOU FOR CHOOSING HALLIBURTON ENERGY SERVICES, GRAND JUNCTION, CO (970) 523-3600														
HALLIBURTON DOES NOT GUARANTEE THE ACCURACY OF ANY INTERPRETATION OF THE LOG DATA, CONVERSION OF LOG DATA TO PHYSICAL ROCK PARAMETERS OR RECOMMENDATIONS WHICH MAY BE GIVEN BY HALLIBURTON PERSONNEL OR WHICH APPEAR ON THE LOG OR IN ANY OTHER FORM. ANY USER OF SUCH DATA, INTERPRETATIONS, CONVERSIONS, OR RECOMMENDATIONS AGREES THAT HALLIBURTON IS NOT RESPONSIBLE EXCEPT WHERE DUE TO GROSS NEGLIGENCE OR WILLFUL MISCONDUCT, FOR ANY LOSS, DAMAGES, OR EXPENSES RESULTING FROM THE USE THEREOF.														
HALLIBURTON														

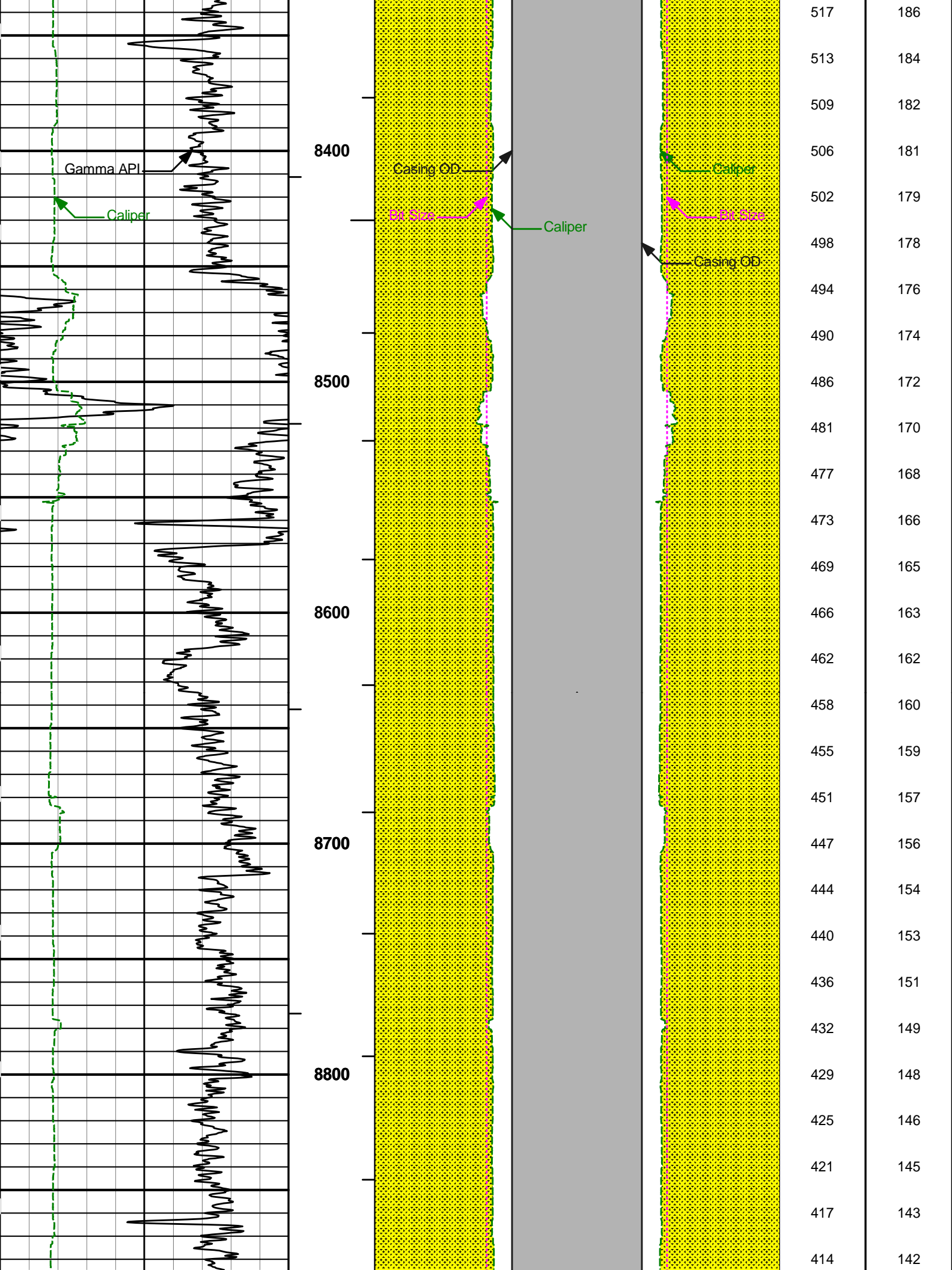
HALLIBURTON

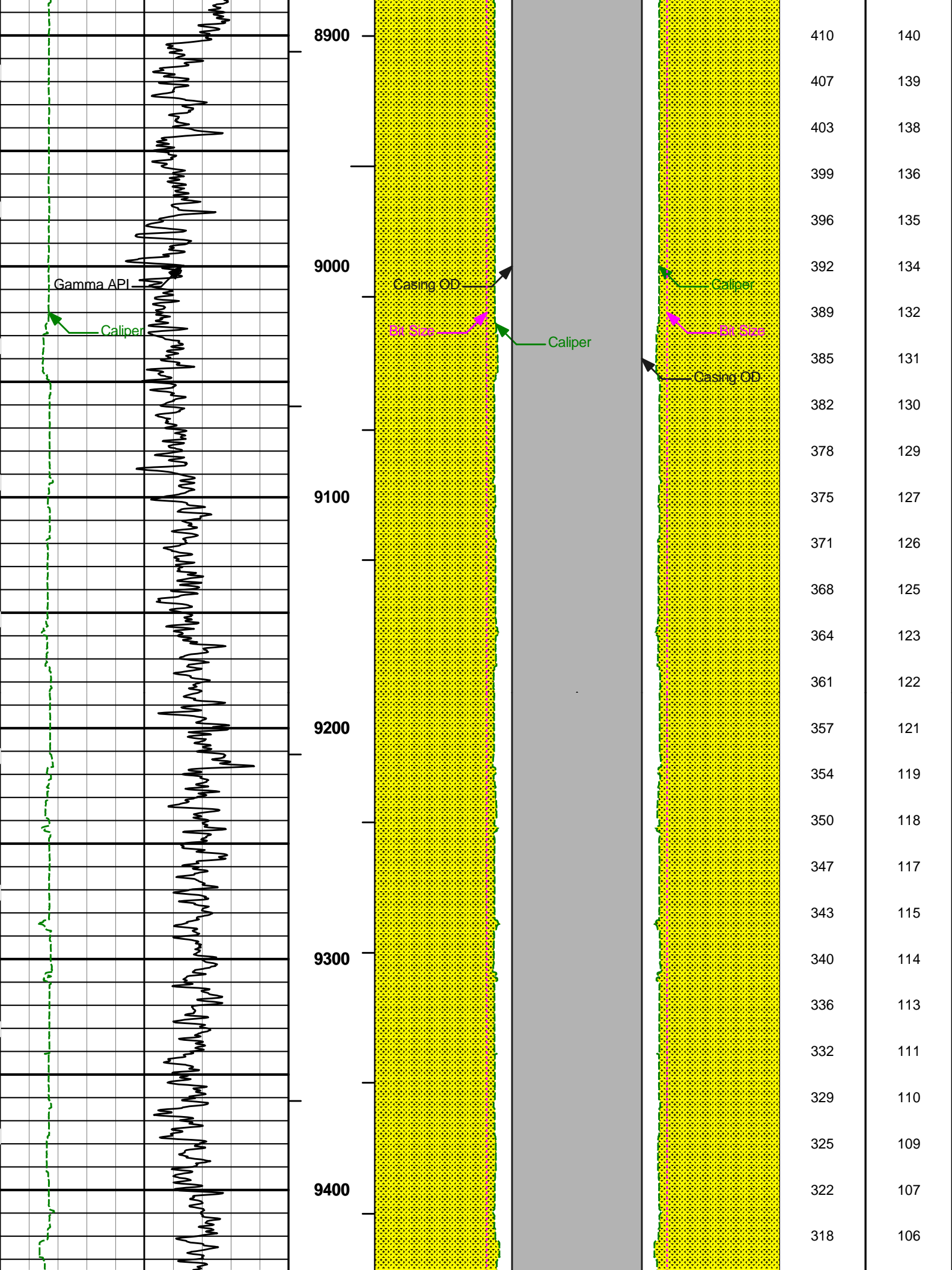
AHV USES 4.5" CASING

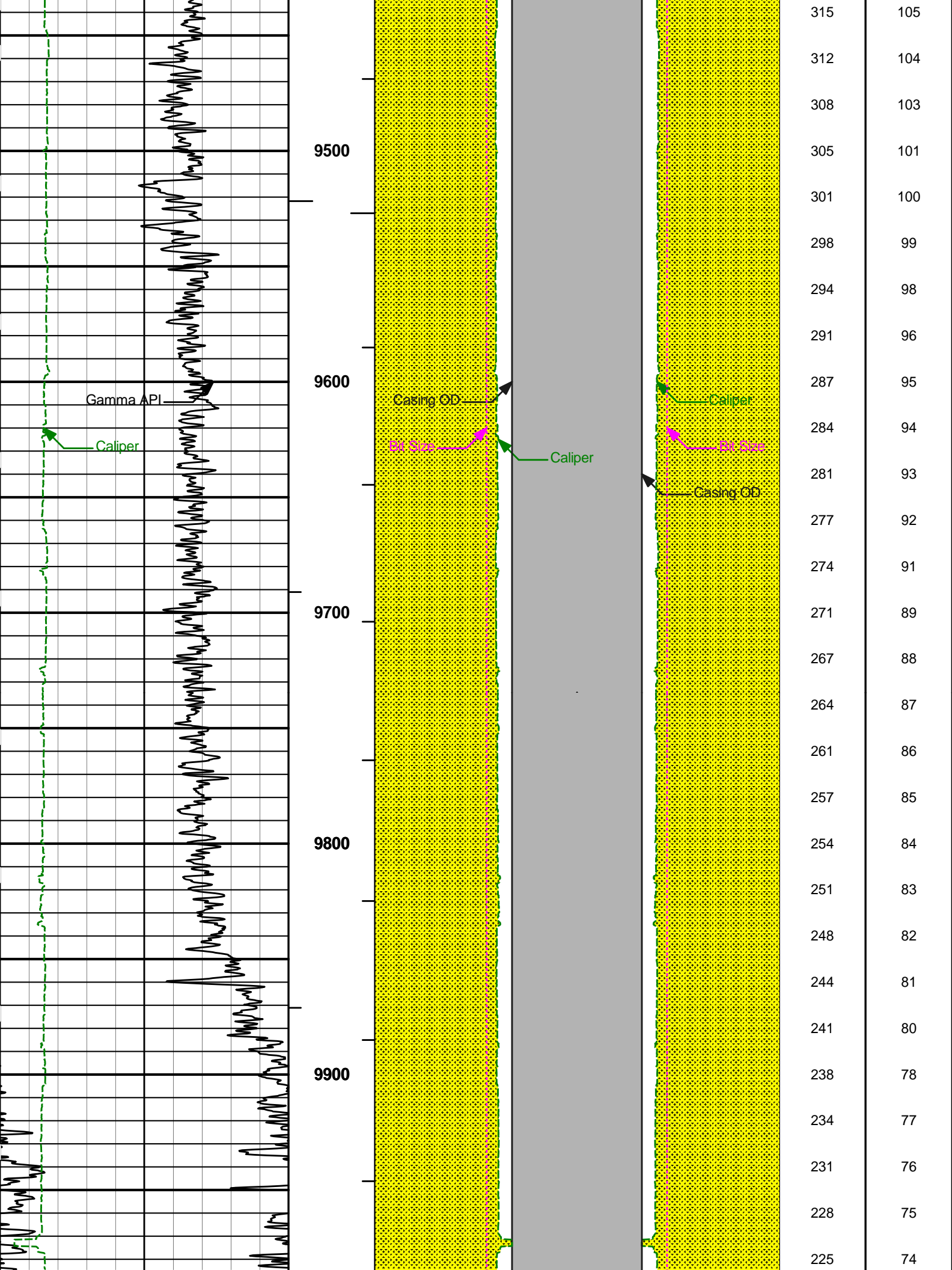


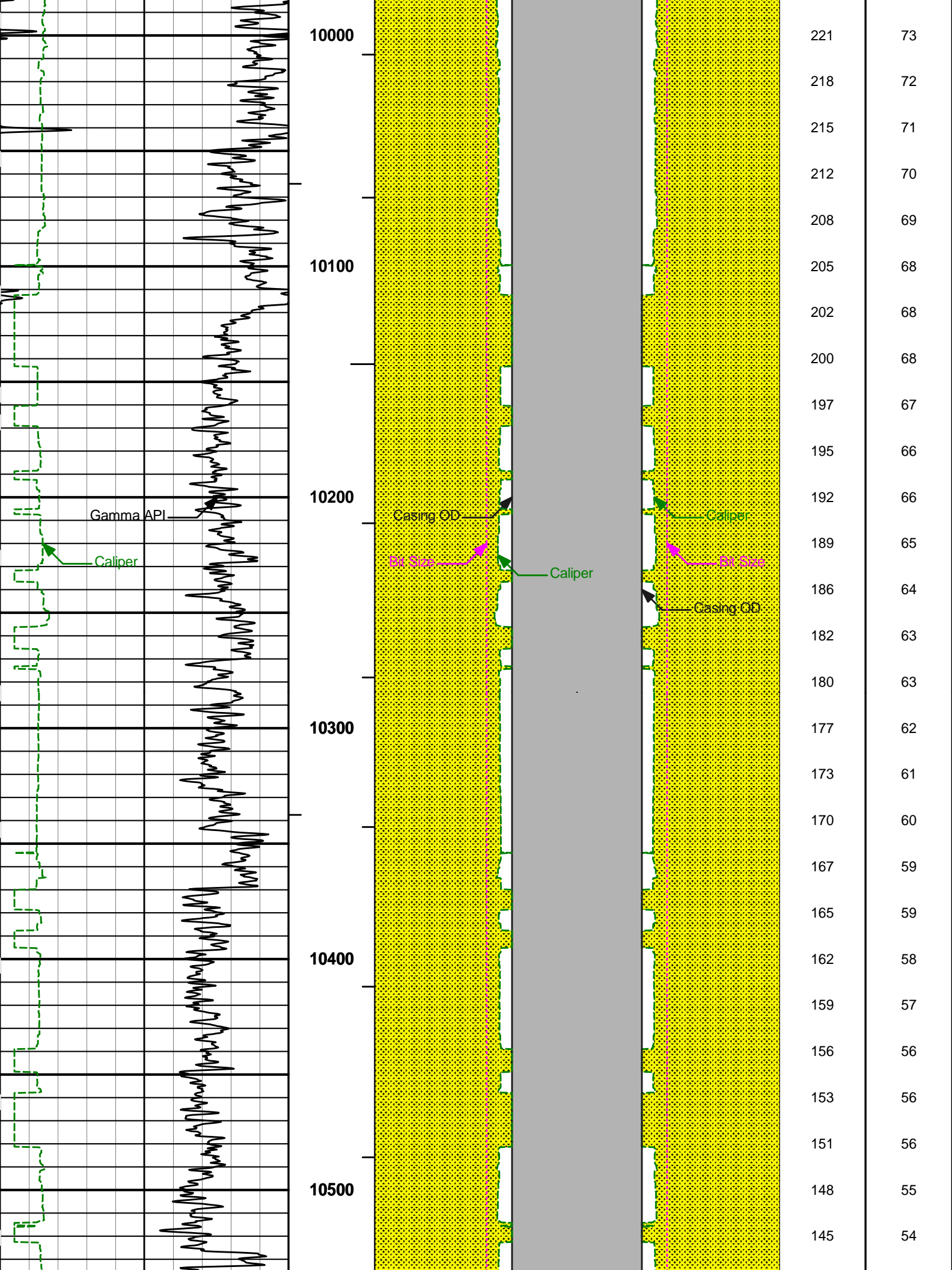


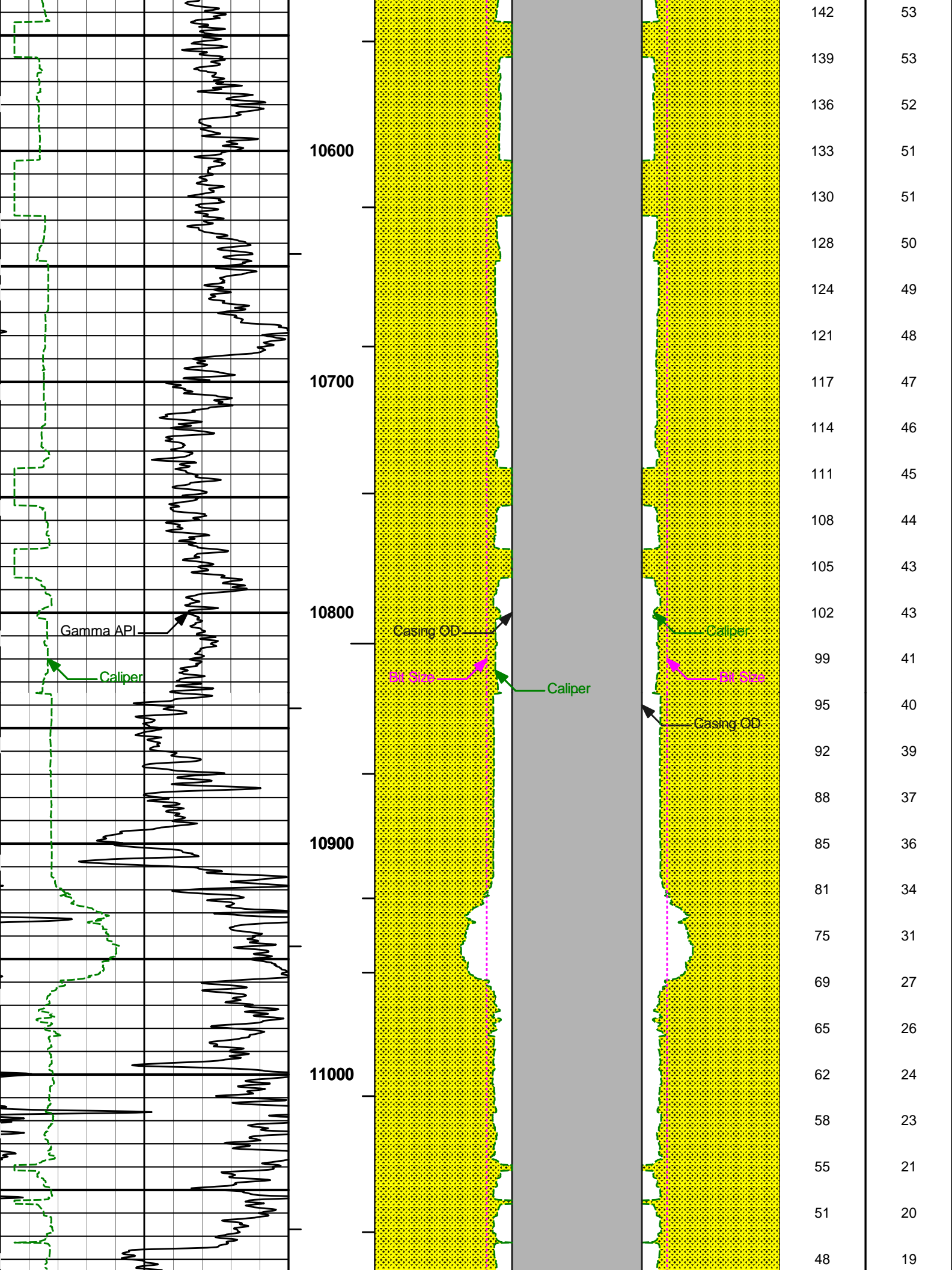


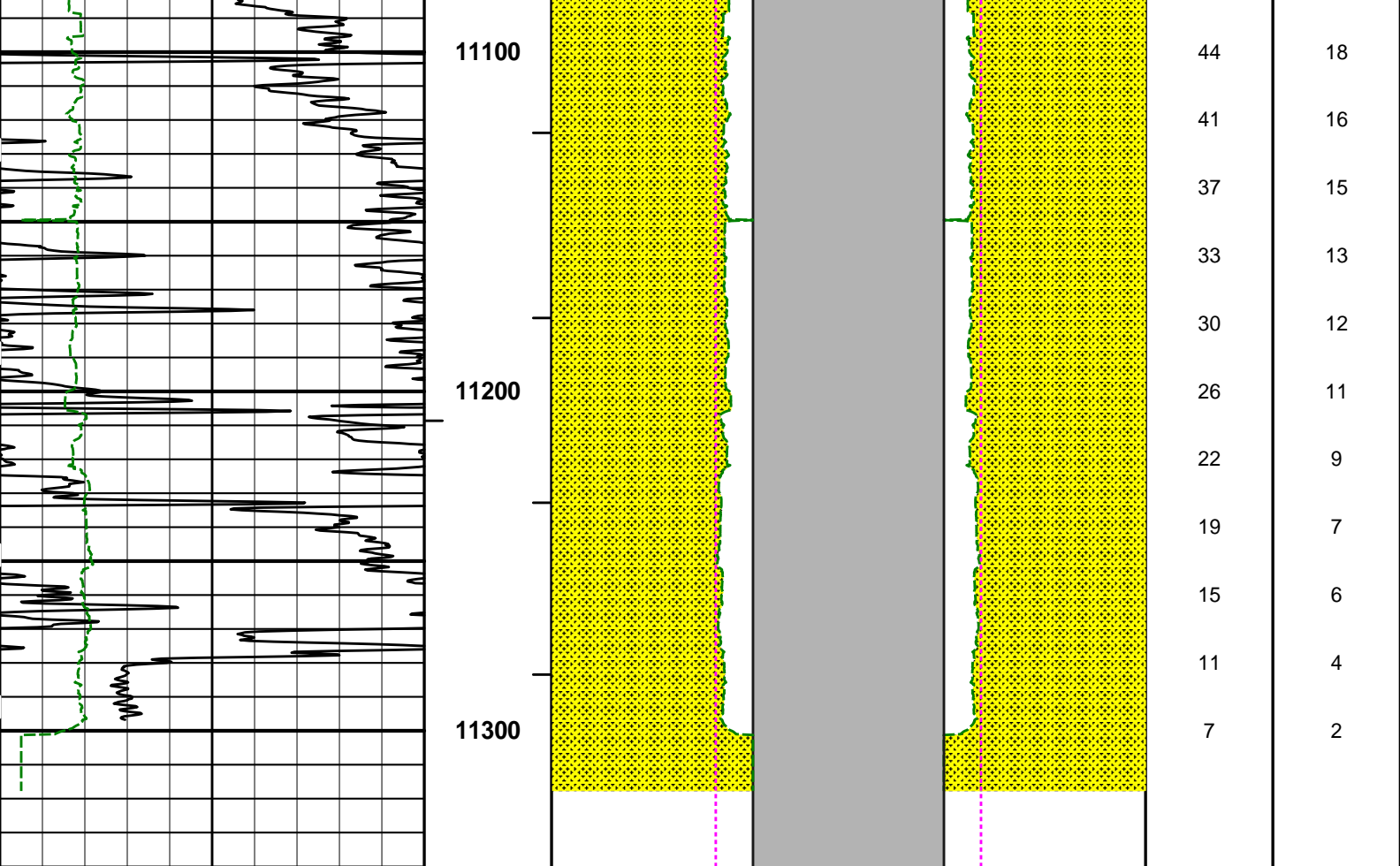












0	Gamma API	150	1 : 600	14	Caliper	0 0	Caliper	14	BHVT	AHVT
	api				inches		inches			
4	Caliper	14	BHVT		Casing OD		Casing OD			
	inches									
			AHVT	14	Bit Size	0 0	Bit Size	14		
					inches		inches			

HALLIBURTON

Plot Time: 15-Nov-11 09:05:26
 Plot Range: 7150 ft to 11340.4 ft
 Data: LAR_HAX_17_05B\Well Based\MAIN*
 Plot File: \\BHV\IQ_BHV_SDL_RM

AHV USES 4.5" CASING

COMPANY	LARAMIE ENERGY II, LCC
WELL	HAWXHURST 17-05B
FIELD	BRUSH CREEK
COUNTY	MESA
STATE	CO

HALLIBURTON

BOREHOLE VOLUME PLOT

