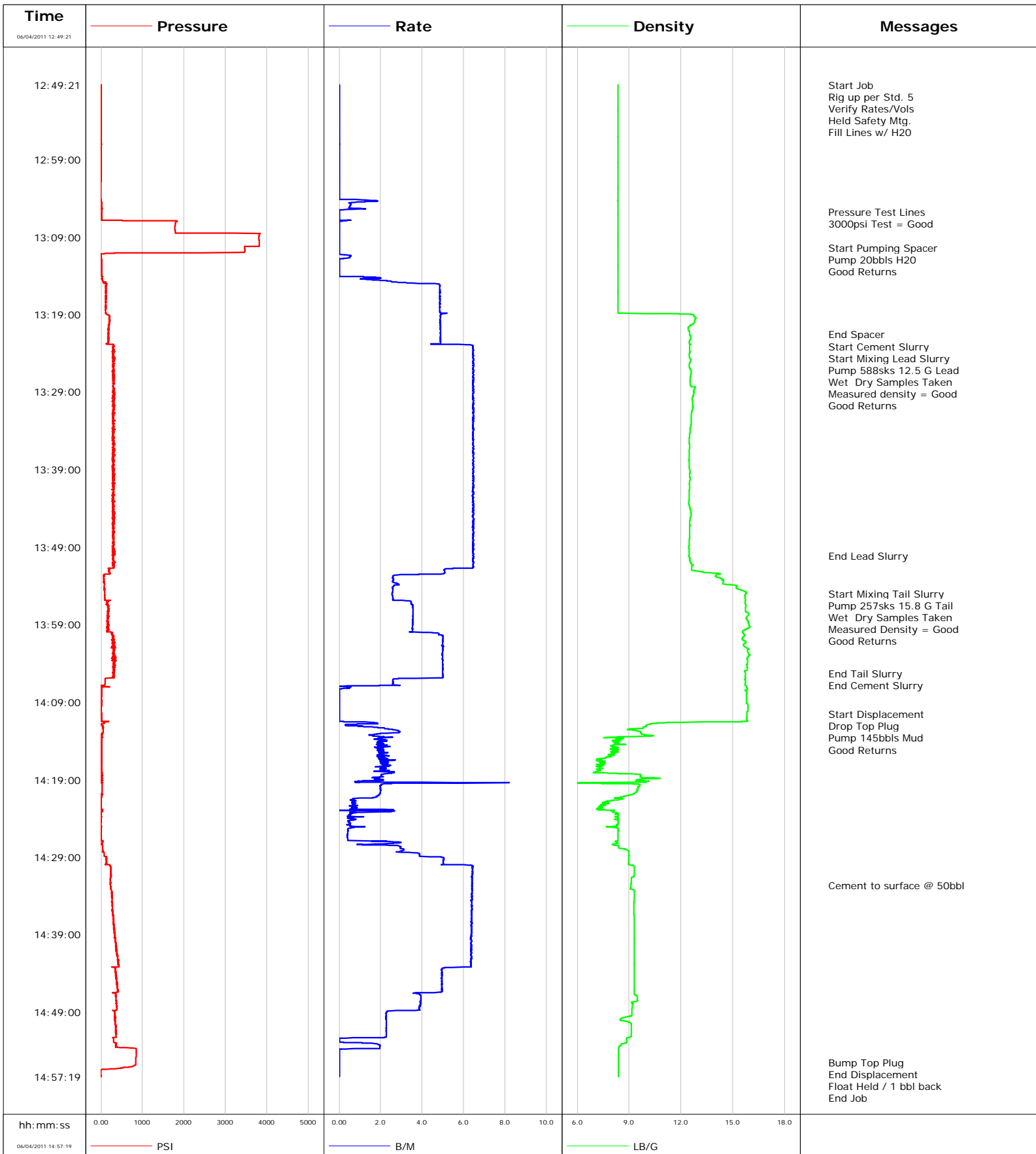


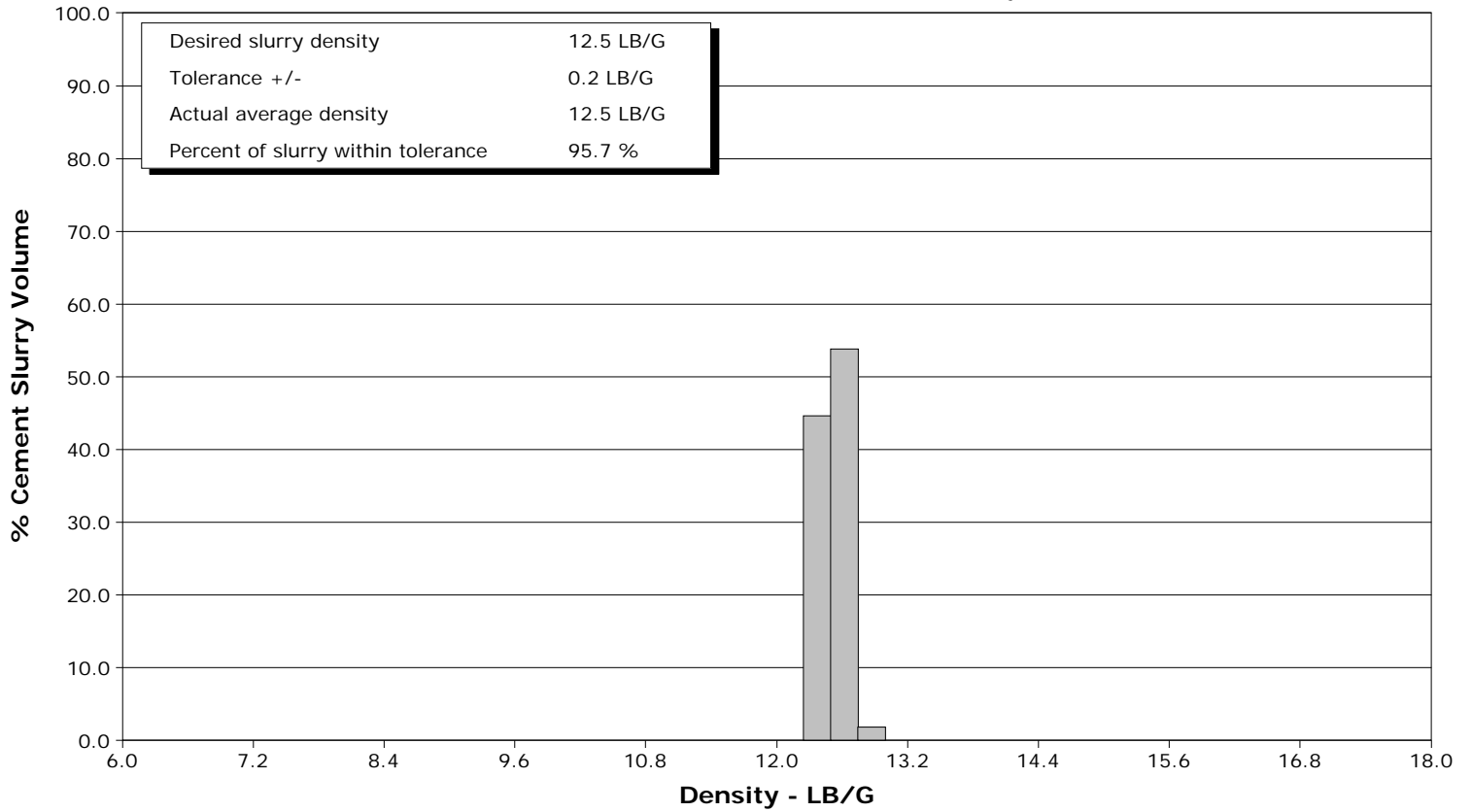
Well	Orchard Unit 15-12H	Client	Encana Oil Gas
Field	Orchard Unit	SIR No.	568679
Engineer	B. Farnham	Job Type	10 3/4" Surface
Country	United States	Job Date	6-4-2011



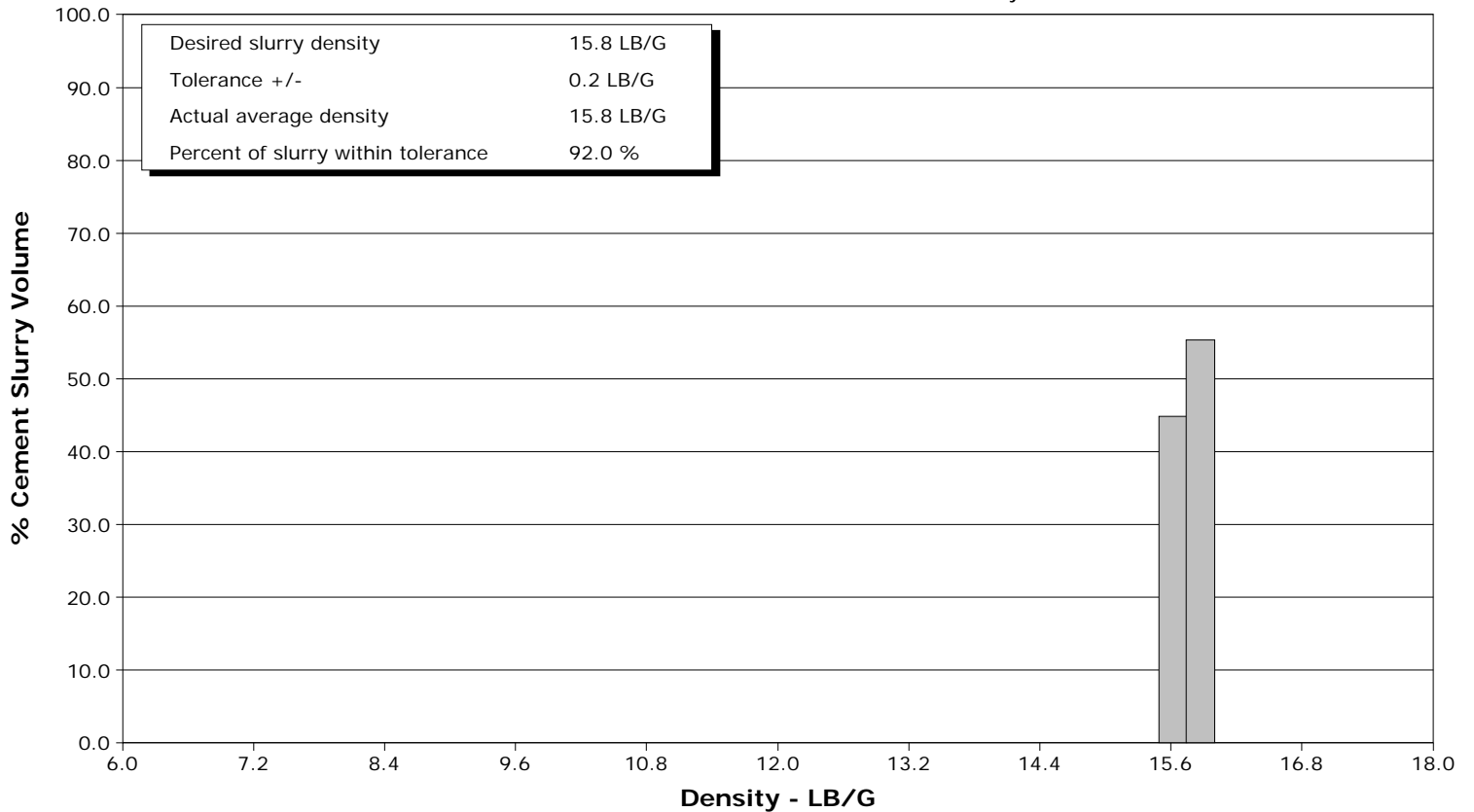
Well Orchard Unit 15-12H
Field Orchard Unit
Engineer B. Farnham
Country United States

Client Encana Oil Gas
SIR No. 568679
Job Type 10 3/4" Surface
Job Date 6-4-2011

Lead Slurry - 06/04/2011 13:22:06 to 06/04/2011 13:50:08



Tail Slurry - 06/04/2011 13:54:58 to 06/04/2011 14:05:18



				Customer			Job Number			
				Encana Oil & Gas			568679			
Well		Location (legal)		Schlumberger Location		Job Start				
Orchard Unit 15-12H 15-12H		Patterson 330		Grand Junction		Jun/04/2011				
Field		Formation Name/Type		Deviation	Bit Size	Well MD	Well TVD			
Orchard Unit		shale		deg	14.8 in	1528.0 ft	1528.0 ft			
County		State/Province		BHP	BHST	BHCT	Pore Press. Gradient			
Garfield		Colorado		psi	100 degF	80 degF	lb/gal			
Well Master		API/UWI								
0631279964		-								
Rig Name	Drilled For	Service Via	Casing/Liner							
Patterson 330	Gas	Land	Depth, ft		Size, in	Weight, lb/ft	Grade	Thread		
Offshore Zone	Well Class	Well Type	40.0	20.0	94.0					
	New	New Well Completion	1528.0	10.8	40.5	j-55	BUTT			
Drilling Fluid Type		Max. Density	Plastic Viscosity		Tubing/Drill Pipe					
Bentonite		9.30 lb/gal	24.000 cP		T/D	Depth, ft	Size, in	Weight, lb/ft	Grade	Thread
Service Line	Job Type				0.0	0.0				
Cementing	10 3/4" Surface				0.0	0.0				
Max. Allowed Tub. Press	Max. Allowed Ann. Press	WH Connection		Perforations/Open Hole						
3000 psi	1500 psi	Single Cement head		Top, ft	Bottom, ft	shot/ft	No. of Shots	Total Interval		
Service Instructions				ft	ft			ft		
Pump 20bbls H2O				ft	ft			Diameter		
588sks (221bbl) 12.5ppg Lead (80%XS)				ft	ft			in		
257sks (54bbl) 15.8 Tail										
Disp. w/ H2O				Treat Down	Displacement	Packer Type	Packer Depth			
				Casing	145.0 bbl		ft			
				Tubing Vol.	Casing Vol.	Annular Vol.	Openhole Vol.			
				bbl	145.0 bbl	270.0 bbl	313.0 bbl			
Casing/Tubing Secured		1 Hole Vol. Circulated prior to Cement		Casing Tools			Squeeze Job			
<input checked="" type="checkbox"/>		<input checked="" type="checkbox"/>								
Lift Pressure		682 psi		Shoe Type		Guide		Squeeze Type		
Pipe Rotated		Pipe Reciprocated		Shoe Depth		1528.0 ft		Tool Type		
<input type="checkbox"/>		<input type="checkbox"/>								
No. Centralizers		Top Plugs	Bottom Plugs	Stage Tool Type			Tool Depth			
		1					ft			
Cement Head Type		Single		Stage Tool Depth			ft			
							ft			
Job Scheduled For		Arrived on Location		Leave Location		Collar Type		Tail Pipe Depth		
Jun/04/2011 08:00		Jun/04/2011 08:00		Jun/04/2011 15:00		Float		ft		
						Collar Depth		Sqz. Total Vol.		
						1482.0 ft		bbl		
Date	Time 24-hr clock	Treating Pressure PSI	Flow Rate B/M	Density LB/G	Volume BBL	Message				
06/04/2011	12:49:21	3	0.0	8.35	0.0	Started Acquisition				
06/04/2011	12:49:23	4	0.0	8.35	0.0	Rig up per Std. 5				
06/04/2011	12:49:24	4	0.0	8.35	0.0	Fill Lines w/ H2O				
06/04/2011	12:49:51	4	0.0	8.35	0.0					
06/04/2011	12:50:21	4	0.0	8.35	0.0					
06/04/2011	12:50:51	4	0.0	8.35	0.0					
06/04/2011	12:51:21	4	0.0	8.35	0.0					
06/04/2011	12:51:51	4	0.0	8.35	0.0					
06/04/2011	12:52:21	4	0.0	8.35	0.0					
06/04/2011	12:52:51	4	0.0	8.35	0.0					
06/04/2011	12:53:21	3	0.0	8.35	0.0					
06/04/2011	12:53:51	3	0.0	8.35	0.0					
06/04/2011	12:54:21	4	0.0	8.35	0.0					
06/04/2011	12:54:51	4	0.0	8.35	0.0					
06/04/2011	12:55:21	4	0.0	8.35	0.0					
06/04/2011	12:55:51	4	0.0	8.35	0.0					
06/04/2011	12:56:21	4	0.0	8.35	0.0					
06/04/2011	12:56:51	4	0.0	8.35	0.0					
06/04/2011	12:57:21	4	0.0	8.35	0.0					
06/04/2011	12:57:51	4	0.0	8.35	0.0					
06/04/2011	12:58:21	4	0.0	8.35	0.0					

Well		Field		Job Start		Customer		Job Number	
Orchard Unit 15-12H 15-12H		Orchard Unit		Jun/04/2011		Encana Oil & Gas		568679	
Date	Time 24-hr clock	Treating Pressure PSI	Flow Rate B/M	Density LB/G	Volume BBL	Message			
06/04/2011	12:59:21	4	0.0	8.35	0.0				
06/04/2011	12:59:51	4	0.0	8.35	0.0				
06/04/2011	13:00:21	4	0.0	8.35	0.0				
06/04/2011	13:00:51	4	0.0	8.35	0.0				
06/04/2011	13:01:21	3	0.0	8.35	0.0				
06/04/2011	13:01:51	-0	0.0	8.35	0.0				
06/04/2011	13:02:51	-1	0.0	8.35	0.0				
06/04/2011	13:03:21	-1	0.0	8.35	0.0				
06/04/2011	13:03:51	-1	0.0	8.35	0.0				
06/04/2011	13:04:21	7	1.9	8.34	0.2				
06/04/2011	13:04:51	16	0.6	8.35	0.7				
06/04/2011	13:05:21	25	1.0	8.35	0.9				
06/04/2011	13:05:45	18	0.0	8.35	1.1	Pressure Test Lines			
06/04/2011	13:05:47	18	0.0	8.35	1.1	3000psi Test = Good			
06/04/2011	13:05:51	17	0.0	8.35	1.1				
06/04/2011	13:06:21	17	0.0	8.35	1.1				
06/04/2011	13:06:51	15	0.1	8.35	1.1				
06/04/2011	13:07:21	1788	0.0	8.35	1.1				
06/04/2011	13:07:51	1784	0.0	8.35	1.1				
06/04/2011	13:08:21	1787	0.0	8.35	1.1				
06/04/2011	13:09:21	3810	0.0	8.35	1.1				
06/04/2011	13:09:51	3814	0.0	8.35	1.1				
06/04/2011	13:10:21	3462	0.0	8.35	1.1				
06/04/2011	13:10:26	3463	0.0	8.35	1.1	Start Pumping Spacer			
06/04/2011	13:10:27	3464	0.0	8.35	1.1	Pump 20bbls H2O			
06/04/2011	13:10:28	3464	0.0	8.35	1.1	Good Returns			
06/04/2011	13:10:51	3469	0.0	8.35	1.1				
06/04/2011	13:11:21	-0	0.4	8.35	1.1				
06/04/2011	13:11:51	5	0.0	8.35	1.3				
06/04/2011	13:12:21	13	0.0	8.35	1.3				
06/04/2011	13:12:51	13	0.0	8.35	1.3				
06/04/2011	13:13:21	13	0.0	8.35	1.3				
06/04/2011	13:13:51	13	0.0	8.35	1.3				
06/04/2011	13:14:21	17	2.0	8.35	1.7				
06/04/2011	13:14:51	62	2.8	8.35	2.7				
06/04/2011	13:15:21	126	4.9	8.36	4.8				
06/04/2011	13:15:51	123	4.9	8.36	7.3				
06/04/2011	13:16:21	119	4.9	8.36	9.7				
06/04/2011	13:16:51	118	4.9	8.36	12.1				
06/04/2011	13:17:21	109	4.8	8.36	14.6				
06/04/2011	13:17:51	114	4.9	8.36	17.0				
06/04/2011	13:18:21	116	4.9	8.36	19.4				
06/04/2011	13:18:51	123	5.2	8.65	21.8				
06/04/2011	13:19:21	205	4.9	12.79	24.3				
06/04/2011	13:20:21	197	4.9	12.58	29.2				
06/04/2011	13:20:51	184	4.9	12.40	31.6				
06/04/2011	13:21:21	181	4.9	12.50	34.1				
06/04/2011	13:21:34	173	4.9	12.50	35.1	End Spacer			
06/04/2011	13:21:51	181	4.9	12.55	36.5				
06/04/2011	13:22:00	173	4.9	12.57	37.2	Start Cement Slurry			
06/04/2011	13:22:06	170	4.9	12.56	37.7	Start Mixing Lead Slurry			
06/04/2011	13:22:11	171	4.9	12.54	38.1	Pump 588sks 12.5 G Lead			
06/04/2011	13:22:12	183	4.9	12.54	38.2	Measured density = Good			
06/04/2011	13:22:21	185	4.9	12.52	38.9				

Well		Field		Job Start		Customer		Job Number	
Orchard Unit 15-12H 15-12H		Orchard Unit		Jun/04/2011		Encana Oil & Gas		568679	
Date	Time 24-hr clock	Treating Pressure PSI	Flow Rate B/M	Density LB/G	Volume BBL	Message			
06/04/2011	13:23:21	296	6.5	12.49	44.5				
06/04/2011	13:23:51	297	6.5	12.53	47.8				
06/04/2011	13:24:21	318	6.5	12.46	51.0				
06/04/2011	13:24:51	287	6.5	12.57	54.2				
06/04/2011	13:25:21	322	6.5	12.50	57.5				
06/04/2011	13:25:51	289	6.5	12.50	60.7				
06/04/2011	13:26:21	322	6.5	12.60	63.9				
06/04/2011	13:26:51	306	6.5	12.56	67.2				
06/04/2011	13:27:21	291	6.5	12.53	70.4				
06/04/2011	13:27:51	298	6.5	12.53	73.6				
06/04/2011	13:28:21	301	6.5	12.81	76.8				
06/04/2011	13:28:51	332	6.5	12.73	80.1				
06/04/2011	13:29:21	304	6.5	12.71	83.3				
06/04/2011	13:29:51	310	6.5	12.64	86.5				
06/04/2011	13:30:21	300	6.5	12.67	89.8				
06/04/2011	13:30:51	290	6.4	12.69	93.0				
06/04/2011	13:31:21	329	6.5	12.65	96.2				
06/04/2011	13:31:51	301	6.5	12.60	99.5				
06/04/2011	13:32:21	288	6.5	12.58	102.7				
06/04/2011	13:32:51	308	6.5	12.58	105.9				
06/04/2011	13:33:21	300	6.5	12.56	109.2				
06/04/2011	13:33:51	335	6.5	12.53	112.4				
06/04/2011	13:34:21	284	6.5	12.51	115.6				
06/04/2011	13:34:51	266	6.5	12.49	118.9				
06/04/2011	13:35:21	311	6.5	12.48	122.1				
06/04/2011	13:35:51	294	6.5	12.49	125.3				
06/04/2011	13:36:21	338	6.5	12.49	128.6				
06/04/2011	13:36:51	304	6.5	12.47	131.8				
06/04/2011	13:37:21	311	6.5	12.47	135.0				
06/04/2011	13:37:51	292	6.5	12.46	138.2				
06/04/2011	13:38:21	283	6.5	12.47	141.5				
06/04/2011	13:38:51	332	6.5	12.49	144.7				
06/04/2011	13:39:21	294	6.5	12.52	148.0				
06/04/2011	13:39:51	327	6.5	12.51	151.2				
06/04/2011	13:40:21	298	6.5	12.52	154.4				
06/04/2011	13:40:51	282	6.4	12.48	157.6				
06/04/2011	13:41:21	315	6.5	12.50	160.9				
06/04/2011	13:41:51	286	6.4	12.48	164.1				
06/04/2011	13:42:21	272	6.4	12.47	167.3				
06/04/2011	13:42:51	294	6.4	12.47	170.6				
06/04/2011	13:43:21	275	6.5	12.44	173.8				
06/04/2011	13:43:51	283	6.5	12.51	177.0				
06/04/2011	13:44:21	303	6.5	12.56	180.3				
06/04/2011	13:44:51	275	6.4	12.58	183.5				
06/04/2011	13:45:21	309	6.5	12.53	186.7				
06/04/2011	13:45:51	298	6.4	12.51	189.9				
06/04/2011	13:46:21	320	6.5	12.51	193.2				
06/04/2011	13:46:51	291	6.5	12.50	196.4				
06/04/2011	13:47:21	292	6.5	12.50	199.6				
06/04/2011	13:47:51	306	6.5	12.49	202.9				
06/04/2011	13:48:21	282	6.5	12.47	206.1				
06/04/2011	13:48:51	290	6.5	12.46	209.3				
06/04/2011	13:49:21	302	6.5	12.47	212.6				
06/04/2011	13:49:51	276	6.5	12.47	215.8				

Well		Field		Job Start		Customer		Job Number	
Orchard Unit 15-12H 15-12H		Orchard Unit		Jun/04/2011		Encana Oil & Gas		568679	
Date	Time 24-hr clock	Treating Pressure PSI	Flow Rate B/M	Density LB/G	Volume BBL	Message			
06/04/2011	13:50:21	290	6.5	12.48	219.0				
06/04/2011	13:50:51	293	6.5	12.53	222.3				
06/04/2011	13:51:21	298	6.5	12.69	225.5				
06/04/2011	13:51:51	189	5.1	12.62	228.6				
06/04/2011	13:52:21	217	5.1	13.85	231.2				
06/04/2011	13:52:51	65	2.6	14.02	232.9				
06/04/2011	13:53:21	71	2.6	14.47	234.2				
06/04/2011	13:53:51	89	2.9	14.72	235.6				
06/04/2011	13:54:21	82	2.6	15.22	236.9				
06/04/2011	13:54:51	89	2.6	15.78	238.2				
06/04/2011	13:54:58	89	2.6	15.77	238.5	Start Mixing Tail Slurry			
06/04/2011	13:55:00	91	2.6	15.76	238.6	Pump 257sks 15.8 G Tail			
06/04/2011	13:55:21	92	2.6	15.69	239.5				
06/04/2011	13:55:27	95	2.6	15.72	239.7	Measured Density = Good			
06/04/2011	13:55:51	95	2.6	15.72	240.8				
06/04/2011	13:56:21	165	3.5	15.72	242.5				
06/04/2011	13:56:51	186	3.5	15.72	244.2				
06/04/2011	13:57:21	183	3.6	15.73	246.0				
06/04/2011	13:57:51	164	3.5	15.87	247.8				
06/04/2011	13:58:21	152	3.5	15.79	249.6				
06/04/2011	13:58:51	167	3.5	15.91	251.3				
06/04/2011	13:59:21	152	3.5	15.98	253.1				
06/04/2011	13:59:51	146	3.5	15.57	254.9				
06/04/2011	14:00:21	264	4.8	15.70	257.0				
06/04/2011	14:00:51	299	5.0	15.52	259.5				
06/04/2011	14:01:21	337	5.0	15.75	262.0				
06/04/2011	14:01:51	279	5.0	15.67	264.5				
06/04/2011	14:02:21	298	5.0	15.83	267.0				
06/04/2011	14:02:51	314	5.0	15.94	269.5				
06/04/2011	14:03:21	350	5.0	15.82	272.0				
06/04/2011	14:03:51	312	5.0	15.85	274.5				
06/04/2011	14:04:21	317	5.0	15.81	277.0				
06/04/2011	14:04:51	329	5.0	15.83	279.5				
06/04/2011	14:05:18	326	5.0	15.72	281.7	End Tail Slurry			
06/04/2011	14:05:20	322	5.0	15.72	281.9	End Cement Slurry			
06/04/2011	14:05:21	329	5.0	15.72	282.0				
06/04/2011	14:05:51	281	5.0	15.72	284.5				
06/04/2011	14:06:21	100	2.6	15.72	286.0				
06/04/2011	14:06:51	7	2.9	15.69	287.3				
06/04/2011	14:07:21	14	0.0	15.85	287.5				
06/04/2011	14:07:51	14	0.0	15.81	287.5				
06/04/2011	14:08:21	13	0.0	15.78	287.5				
06/04/2011	14:08:51	12	0.0	15.78	287.5				
06/04/2011	14:09:21	12	0.0	15.86	287.5				
06/04/2011	14:09:51	10	0.0	15.88	287.5				
06/04/2011	14:10:21	11	0.0	15.82	287.5				
06/04/2011	14:10:33	12	0.0	15.81	287.5	Start Displacement			
06/04/2011	14:10:34	12	0.0	15.81	287.5	Drop Top Plug			
06/04/2011	14:10:35	12	0.0	15.80	287.5	Pump 145bbbls Mud			
06/04/2011	14:10:36	12	0.0	15.80	287.5	Good Returns			
06/04/2011	14:10:51	12	0.0	15.81	287.5				
06/04/2011	14:11:21	12	0.0	15.83	287.5				
06/04/2011	14:11:51	8	0.9	10.22	288.0				
06/04/2011	14:12:21	46	2.2	9.82	288.5				

Well		Field		Job Start		Customer		Job Number	
Orchard Unit 15-12H 15-12H		Orchard Unit		Jun/04/2011		Encana Oil & Gas		568679	
Date	Time 24-hr clock	Treating Pressure PSI	Flow Rate B/M	Density LB/G	Volume BBL	Message			
06/04/2011	14:13:21	20	1.7	10.41	290.9				
06/04/2011	14:13:51	21	2.1	8.21	291.9				
06/04/2011	14:14:21	16	1.8	8.33	292.9				
06/04/2011	14:14:51	14	1.7	8.28	293.9				
06/04/2011	14:15:21	13	1.9	8.10	294.9				
06/04/2011	14:15:51	13	1.8	8.16	295.9				
06/04/2011	14:16:21	12	2.3	7.31	296.9				
06/04/2011	14:16:51	18	2.0	7.37	298.0				
06/04/2011	14:17:21	15	2.0	7.16	299.1				
06/04/2011	14:17:51	14	2.3	7.25	300.2				
06/04/2011	14:18:21	23	2.1	9.65	301.3				
06/04/2011	14:18:51	26	2.0	10.78	302.3				
06/04/2011	14:19:21	23	0.8	9.84	303.1				
06/04/2011	14:19:51	27	2.0	9.59	304.6				
06/04/2011	14:20:21	26	2.0	9.49	305.6				
06/04/2011	14:20:51	24	2.0	9.26	306.6				
06/04/2011	14:21:21	10	1.6	8.44	307.5				
06/04/2011	14:21:51	6	0.6	7.72	307.9				
06/04/2011	14:22:21	7	0.9	7.60	308.3				
06/04/2011	14:22:51	4	0.5	7.42	308.6				
06/04/2011	14:23:21	-1	0.7	8.36	309.4				
06/04/2011	14:23:51	3	0.7	8.22	309.7				
06/04/2011	14:24:21	3	0.4	8.38	310.0				
06/04/2011	14:24:51	-2	0.5	8.29	310.3				
06/04/2011	14:25:21	5	0.4	8.37	310.6				
06/04/2011	14:25:51	5	0.4	8.37	310.8				
06/04/2011	14:26:21	4	0.4	8.37	311.0				
06/04/2011	14:26:51	3	0.4	8.37	311.2				
06/04/2011	14:27:21	4	1.4	8.02	312.3				
06/04/2011	14:27:51	44	2.9	8.41	313.6				
06/04/2011	14:28:21	31	2.9	8.99	315.1				
06/04/2011	14:28:51	77	3.9	9.00	316.9				
06/04/2011	14:29:21	130	5.0	8.98	319.3				
06/04/2011	14:29:51	131	5.0	8.97	321.8				
06/04/2011	14:30:21	237	6.4	9.29	324.8				
06/04/2011	14:30:51	232	6.4	9.30	328.0				
06/04/2011	14:31:21	231	6.4	9.30	331.2				
06/04/2011	14:31:51	228	6.4	9.12	334.4				
06/04/2011	14:32:21	219	6.4	9.12	337.6				
06/04/2011	14:32:42	229	6.4	9.10	339.9	Cement to surface @ 50bbl			
06/04/2011	14:32:51	234	6.4	9.09	340.8				
06/04/2011	14:33:21	259	6.4	9.29	344.1				
06/04/2011	14:33:51	257	6.4	9.29	347.3				
06/04/2011	14:34:21	265	6.4	9.29	350.5				
06/04/2011	14:34:51	267	6.4	9.28	353.6				
06/04/2011	14:35:21	273	6.4	9.28	356.8				
06/04/2011	14:35:51	277	6.4	9.28	360.0				
06/04/2011	14:36:21	294	6.4	9.28	363.2				
06/04/2011	14:36:51	308	6.4	9.30	366.4				
06/04/2011	14:37:21	301	6.3	9.30	369.6				
06/04/2011	14:37:51	311	6.3	9.30	372.8				
06/04/2011	14:38:21	321	6.4	9.30	376.0				
06/04/2011	14:38:51	330	6.4	9.30	379.2				
06/04/2011	14:39:21	346	6.3	9.30	382.4				

Well		Field		Job Start		Customer		Job Number	
Orchard Unit 15-12H 15-12H		Orchard Unit		Jun/04/2011		Encana Oil & Gas		568679	
Date	Time 24-hr clock	Treating Pressure PSI	Flow Rate B/M	Density LB/G	Volume BBL	Message			
06/04/2011	14:40:21	361	6.4	9.30	388.7				
06/04/2011	14:40:51	364	6.4	9.30	391.9				
06/04/2011	14:41:21	384	6.4	9.30	395.1				
06/04/2011	14:41:51	392	6.4	9.30	398.3				
06/04/2011	14:42:21	419	6.4	9.30	401.5				
06/04/2011	14:42:51	423	6.3	9.30	404.6				
06/04/2011	14:43:21	340	5.0	9.29	407.7				
06/04/2011	14:43:51	349	4.9	9.29	410.1				
06/04/2011	14:44:21	358	5.0	9.29	412.6				
06/04/2011	14:44:51	377	4.9	9.29	415.1				
06/04/2011	14:45:21	384	4.9	9.29	417.6				
06/04/2011	14:46:21	403	4.9	9.29	422.5				
06/04/2011	14:46:51	352	3.9	9.41	424.6				
06/04/2011	14:47:21	366	3.9	9.48	426.5				
06/04/2011	14:47:51	365	3.9	9.22	428.5				
06/04/2011	14:48:21	381	3.9	9.17	430.5				
06/04/2011	14:48:51	313	2.4	9.16	432.3				
06/04/2011	14:49:21	342	2.3	9.16	433.5				
06/04/2011	14:49:51	336	2.3	8.53	434.6				
06/04/2011	14:50:21	337	2.3	9.05	435.7				
06/04/2011	14:50:51	352	2.3	9.14	436.9				
06/04/2011	14:51:21	367	2.3	9.14	438.0				
06/04/2011	14:51:51	374	2.3	9.13	439.2				
06/04/2011	14:52:21	303	0.3	8.87	440.2				
06/04/2011	14:52:51	301	0.0	8.87	440.2				
06/04/2011	14:53:21	364	2.0	8.47	440.9				
06/04/2011	14:53:51	853	0.0	8.37	441.7				
06/04/2011	14:54:21	848	0.0	8.38	441.7				
06/04/2011	14:54:51	845	0.0	8.37	441.7				
06/04/2011	14:55:21	843	0.0	8.38	441.7				
06/04/2011	14:55:29	843	0.0	8.38	441.7	Bump Top Plug			
06/04/2011	14:55:30	843	0.0	8.38	441.7	End Displacement			
06/04/2011	14:55:32	843	0.0	8.38	441.7	Float Held / 1 bbl back			
06/04/2011	14:55:51	826	0.0	8.38	441.7				
06/04/2011	14:56:21	237	0.0	8.38	441.7				
06/04/2011	14:56:51	-1	0.0	8.37	441.7				

Post Job Summary

Average Pump Rates, bbl/min				Volume of Fluid Injected, bbl			
Slurry	N2	Mud	Maximum Rate	Total Slurry	Mud	Spacer	N2
4.5		0.0	6.5	275.0	0.0	20.0	
Treating Pressure Summary, psi				Breakdown Fluid			
Maximum	Final	Average	Bump Plug to	Breakdown	Type	Volume	Density
3843	3	265	980		FreshWater	300.0 bbl	8.34 lb/gal
Avg. N2 Percent	Designed Slurry Volume		Displacement	Mix Water Temp	Cement Circulated to Surface?	Volume	
%	275.0 bbl		145.0 bbl	70 degF	<input checked="" type="checkbox"/>	95.0 bbl	
Customer or Authorized Representative				Schlumberger Supervisor		Circulation Lost	Job Completed
Arvid Mosnes				B. Farnham		<input type="checkbox"/>	<input checked="" type="checkbox"/>
						-	-