

HALLIBURTON

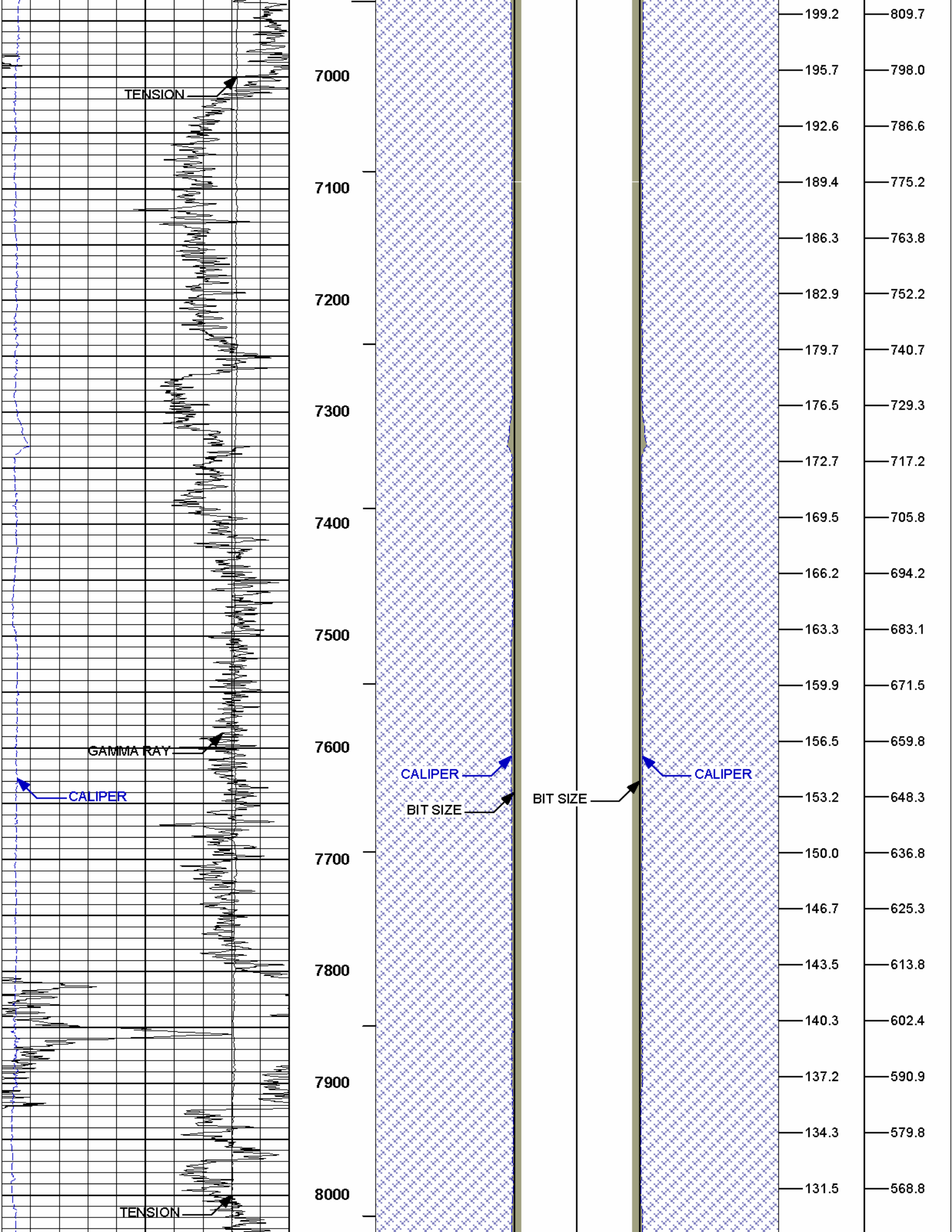
BOREHOLE VOLUME PLOT

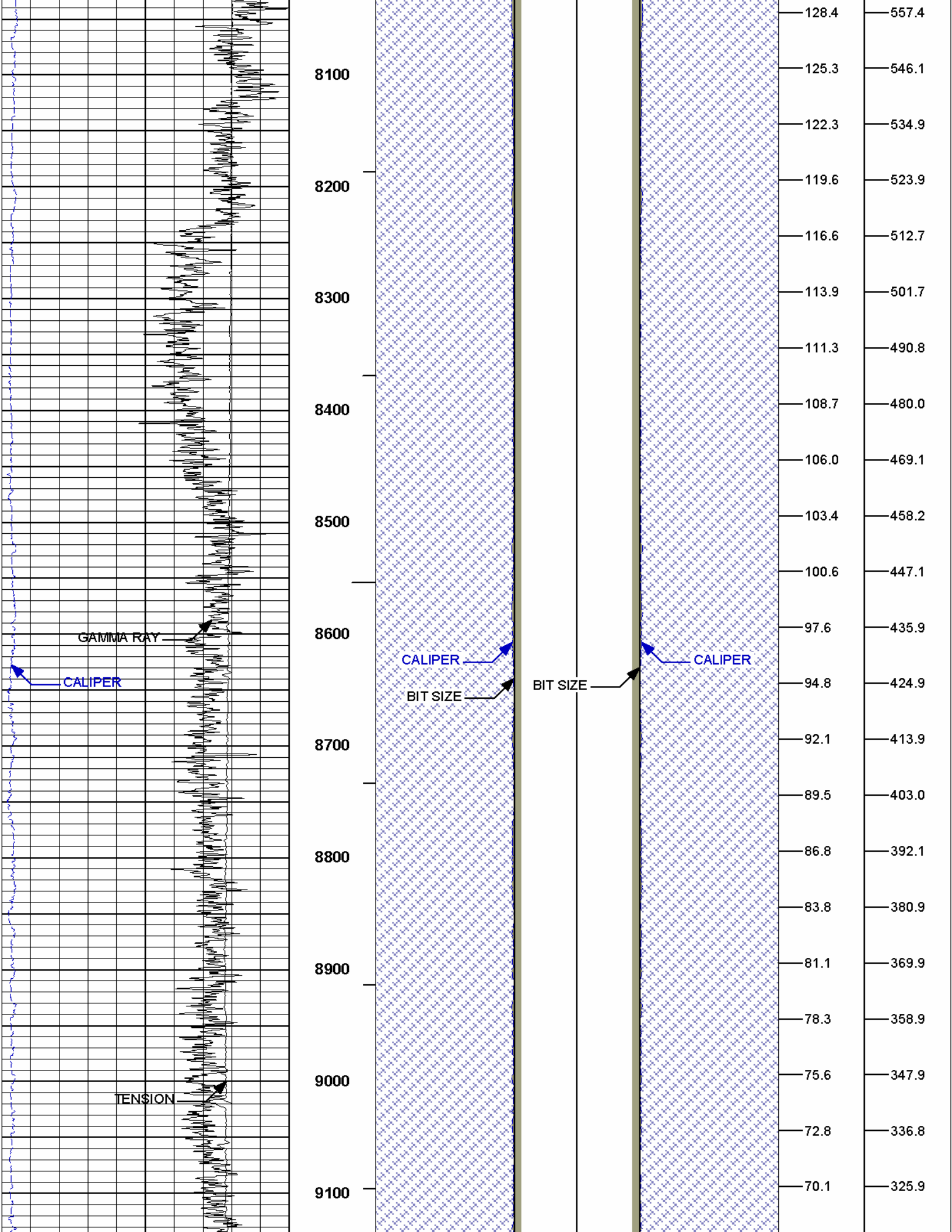
LARAMIE ENERGY HAWXHURST 19-13A BRUSH CREEK MESA CO				COMPANY	LARAMIE ENERGY	
WELL				WELL	HAWXHURST 19-13A	
FIELD				FIELD	BRUSH CREEK	
COUNTY				COUNTY	MESA	STATE CO
API No. 05077101660000 Location SHL SEC 24, 1349' FSL AND 602' FEL, T9S R96W BHL SEC 19, 1080' FSL AND 647' FWL, T9S R94W				Other Services: RWCH DSNT/SDLT ACRT		
Permanent Datum	GL			Elev. 6354.0 ft	Elev. K.B.	6375.0 ft
Log measured from	KB			21.0 ft above perm. Datum	D.F.	6375.0 ft
Drilling measured from	KB				G.L.	6354.0 ft
Date	16-Oct-11			05-Oct-11		
Run No.	TWO			ONE		
Depth - Driller	10625.00 ft			6636.00 ft		
Depth - Logger	10630.0 ft			6633.0 ft		
Bottom - Logged Interval	10627.0 ft					
Top - Logged Interval	6510.0 ft					
Casing - Driller	7.000 in @ 6514.0 ft			9.625 in @ 1547.0 ft		@
Casing - Logger	6510.0 ft			1542.0 ft		
Bit Size	6.250 in			8.750 in		@
Type Fluid in Hole	WBM			WBM		
Density	11.5 ppq	63.00 s/qt		9.6 ppq	60.00 s/qt	
PH	9.00 pH	6.2 cpm		9.50 pH	7.0 cpm	
Source of Sample	FLOW LINE			MUD TANK		
Rm @ Meas. Temperature	2.380 ohmm @ 75.00 degF			1.480 ohmm @ 72.00 degF		@
Rmf @ Meas. Temperature	1.48 ohmm @ 75.00 degF			1.24 ohmm @ 75.00 degF		@
Rmc @ Meas. Temperature	3.609 ohmm @ 75.00 degF			1.242 ohmm @ 75.00 degF		@
Source Rmf	CHART	CHART		CHART	CHART	
Rm @ BHT	0.79 ohmm @ 240.0 degF			0.61 ohmm @ 185.0 degF		@
Time Since Circulation	10.8 hr			10.0 hr		
Time on Bottom	16-Oct-11 21:17			05-Oct-11 12:04		
Max Rec. Temperature	240.0 degF @ 10625.0 ft			185.0 degF @ 6633.0 ft		@
Equipment	11014853	GU, CO		11014853	GU, CO	
Recorded By	B. DRAKE			J. KRONABLE		
Witnessed By	K. CLAUSSEN			KELLY CLAUSSEN		

Fold here

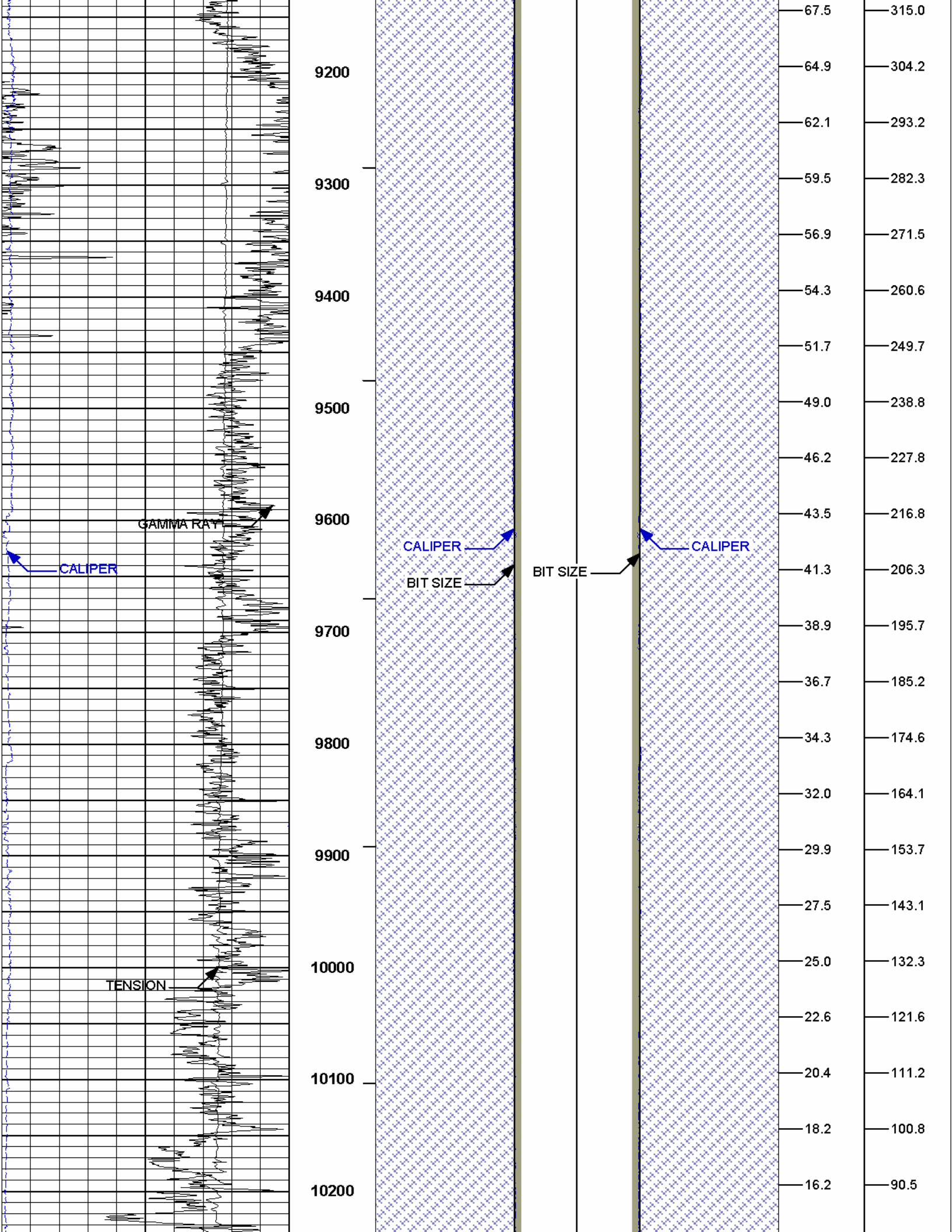
Service Ticket No.: 8512723						API Serial No.: 05077101660000						PGM Version: WL INSITE R3.4.0 (Build 4)															
CHANGE IN MUD TYPE OR ADDITIONAL SAMPLE												RESISTIVITY SCALE CHANGES															
Date		Sample No.										Type Log		Depth		Scale Up Hole				Scale Down Hole							
Depth-Driller																											
Type Fluid in Hole																											
Density		Viscosity																									
Ph		Fluid Loss																									
Source of Sample												RESISTIVITY EQUIPMENT DATA															
Rm @ Meas. Temp				@				@				Run No.		Tool Type & No.		Pad Type		Tool Pos.				Other					
Rmf @ Meas. Temp.				@				@				TWO		ACRT-		N/A		FREE				N/A					
Rmc @ Meas. Temp.				@				@						I777S201													
Source Rmf		Rmc																									
Rm @ BHT				@				@																			
Rmf @ BHT				@				@																			
Rmc @ BHT				@				@																			
EQUIPMENT DATA																											
GAMMA						ACOUSTIC						DENSITY						NEUTRON									
Run No.		TWO				Run No.						Run No.		TWO				Run No.		TWO							
Serial No.		11602915				Serial No.						Serial No.		10950493				Serial No.		10981426							
Model No.		GTET				Model No.						Model No.		SDLT-I				Model No.		DSNT-I							
Diameter		3.625"				No. of Cent.						Diameter		4.5"				Diameter		3.625"							
Detector Model No.		102-A				Spacing						Log Type		GAM-GAM				Log Type		THERM-THERM							
Type		SCINT										Source Type		Cs-137				Source Type		Am241Be							
Length		8"				LSA [Y/N]						Serial No.		18265GW				Serial No.		DSN-362							
Distance to Source		10'				FWDA [Y/N ]						Strength		1.5 Ci				Strength		15 Ci							
LOGGING DATA																											

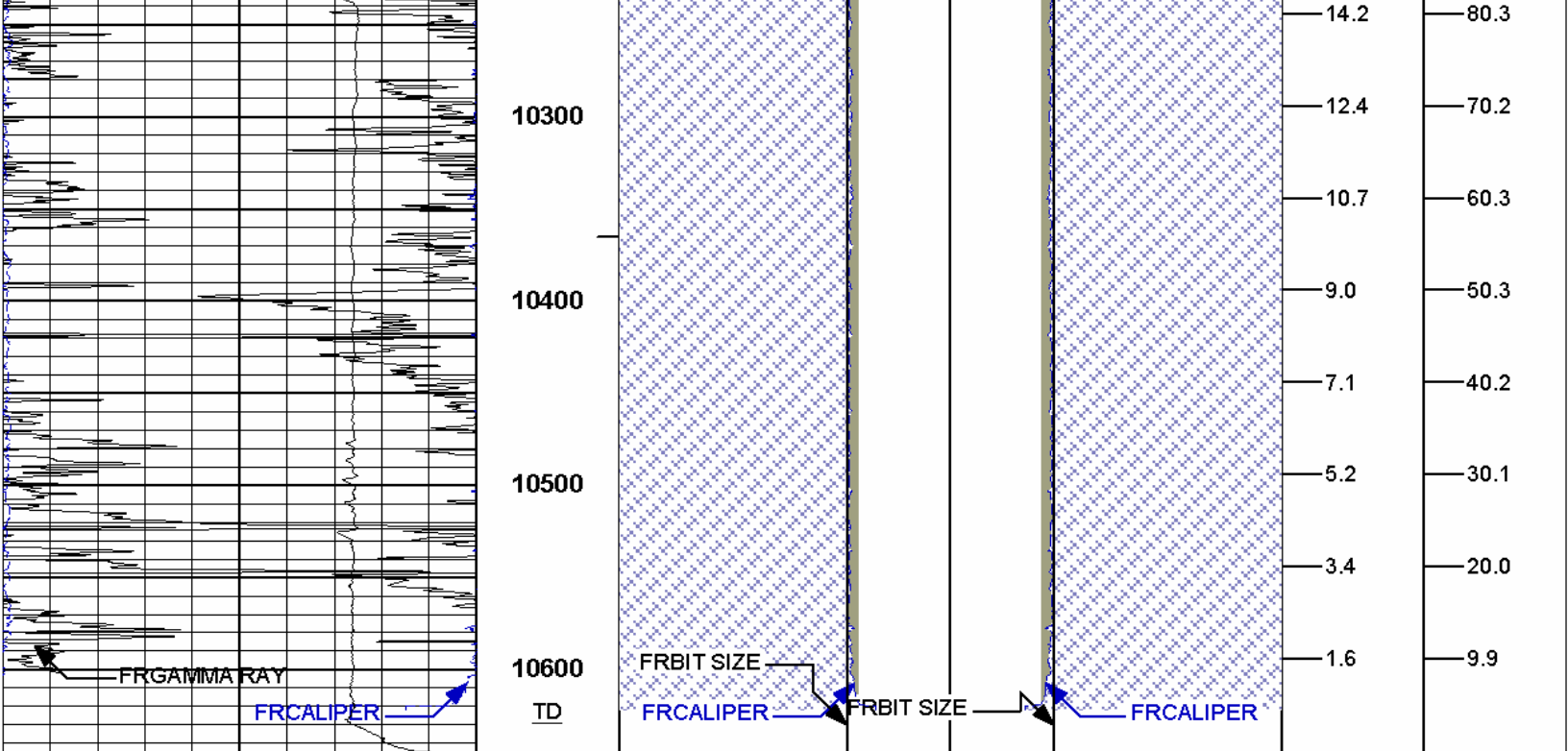
GENERAL			GAMMA		ACOUSTIC		DENSITY		NEUTRON							
Run	Depth		Speed	Scale		Scale		Matrix	Scale		Matrix	Scale		Matrix		
No.	From	To	ft/min	L	R	L	R		L	R		L	R			
TWO	6510'	10630'	REC	0	150				30%	-10%	2.68 g/cc	30%	-10%	SAND		
DIRECTIONAL INFORMATION																
Maximum Deviation								@	KOP							@
Remarks: RWCH-GTET-DSNT-SDLT-ACRT RAN IN COMBINATION																
ANNULAR HOLE VOLUME CALCULATED FOR 5.5 INCH CASING																
BOREHOLE RUGOSITY, TENSION PULLS AND WASHOUTS MAY EFFECT TOOL RESPONSE AND REPEATABILITY																
BOWSPRING DECENTRALIZER AND ACRT STANDOFF REMOVED DUE TO BIT SIZE (6.25")																
LATITUDE: 39.52946																
LONGITUDE: -107.96547																
TODAY'S CREW: J. FREW AND J. MARTIN																
*** THANK YOU FOR CHOOSING HALLIBURTON ENERGY SERVICES, VERNAL, UT (435) 789-2550 ***																
HALLIBURTON DOES NOT GUARANTEE THE ACCURACY OF ANY INTERPRETATION OF THE LOG DATA, CONVERSION OF LOG DATA TO PHYSICAL ROCK PARAMETERS OR RECOMMENDATIONS WHICH MAY BE GIVEN BY HALLIBURTON PERSONNEL OR WHICH APPEAR ON THE LOG OR IN ANY OTHER FORM. ANY USER OF SUCH DATA, INTERPRETATIONS, CONVERSIONS, OR RECOMMENDATIONS AGREES THAT HALLIBURTON IS NOT RESPONSIBLE EXCEPT WHERE DUE TO GROSS NEGLIGENCE OR WILLFUL MISCONDUCT, FOR ANY LOSS, DAMAGES, OR EXPENSES RESULTING FROM THE USE THEREOF.																
HALLIBURTON																











6	CALIPER inches	16	1 : 1200 FT.	FORMATION	FORMATION	AHVT ft3	BHVT ft3
			AHV	CEMENT	CEMENT		

**HALLIBURTON** Plot Time: 17-Oct-11 02:33:16  
Plot Range: 6494 ft to 10645.2 ft  
Data: LARA\_HAWX19\_13A\Well Based\MAIN\_TDI  
Plot File: \\BHWIQ\_BHV

COMPANY	LARAMIE ENERGY		
WELL	HAWXHURST 19-13A		
FIELD	BRUSH CREEK		
COUNTY	MESA	STATE	CO
HALLIBURTON		BOREHOLE VOLUME PLOT	