
CHEVRON - MID-CONTINENT EBIZ

**SKR 698-09-AV-19
PICEANCE
Garfield County , Colorado**

**Cement Production Casing
12-Apr-2009**

Job Site Documents

The Road to Excellence Starts with Safety

Sold To #: 338668	Ship To #: 2713362	Quote #:	Sales Order #: 6611371
Customer: CHEVRON - MID-CONTINENT EBIZ		Customer Rep: GEISER, GREG	
Well Name: SKR		Well #: 698-09-AV-19	API/UWI #: 05-045-17285
Field: PICEANCE	City (SAP): PARACHUTE	County/Parish: Garfield	State: Colorado
Lat: N 39.551 deg. OR N 39 deg. 33 min. 4.046 secs.		Long: W 108.33 deg. OR W -109 deg. 40 min. 12.565 secs.	
Contractor: H&P 316		Rig/Platform Name/Num: H&P 316	
Job Purpose: Cement Production Casing			
Well Type: Development Well		Job Type: Cement Production Casing	
Sales Person: METLI, MARSHALL		Srvc Supervisor: CALDWELL, JEFFREY	MBU ID Emp #: 369111

Job Personnel

HES Emp Name	Exp Hrs	Emp #	HES Emp Name	Exp Hrs	Emp #	HES Emp Name	Exp Hrs	Emp #
BANKS, BRENT A	5.5	371353	CALDWELL, JEFFREY S	5.5	369111	CREECH, STEVEN Michael	5.5	420183
MADRIGAL, MARK Henry	5.5	444368	ONEAL, TALLEY	5.5	456423	SCOTT, DALLAS D	5.5	334750
SULLIVAN, MARK	5.5	425453						

Equipment

HES Unit #	Distance-1 way	HES Unit #	Distance-1 way	HES Unit #	Distance-1 way	HES Unit #	Distance-1 way
10296152C	120 mile	10722398	120 mile	10724583	120 mile	10897797	120 mile
10951248	120 mile						

Job Hours

Date	On Location Hours	Operating Hours	Date	On Location Hours	Operating Hours	Date	On Location Hours	Operating Hours
04-11-09	2.5	.5	04-12-09	3	1.25			
TOTAL	Total is the sum of each column separately							

Job

Formation Name	Formation Depth (MD)	Top	Bottom	Form Type	Job depth MD	Job Depth TVD	Water Depth	Perforation Depth (MD)	From	To
				BHST	6560. ft	6560. ft				
							Wk Ht Above Floor			
							5. ft			

Job Times

Date	Time	Time Zone
11 - Apr - 2009	16:00	MST
11 - Apr - 2009	21:30	MST
11 - Apr - 2009	23:23	MST
12 - Apr - 2009	01:10	MST
12 - Apr - 2009	03:00	MST

Well Data

Description	New / Used	Max pressure psig	Size in	ID in	Weight lbm/ft	Thread	Grade	Top MD ft	Bottom MD ft	Top TVD ft	Bottom TVD ft
-------------	------------	-------------------	---------	-------	---------------	--------	-------	-----------	--------------	------------	---------------

Sales/Rental/3rd Party (HES)

Description	Qty	Qty uom	Depth	Supplier
PLUG,CMTG,TOP,4 1/2,HWE,3.65 MIN/4.14 MA	1	EA		
PORT. DAS W/CEMWIN;ACQUIRE W/HES, ZI	1	JOB		
ADC (AUTO DENSITY CTRL) SYS, /JOB,ZI	1	JOB		

Tools and Accessories

Type	Size	Qty	Make	Depth	Type	Size	Qty	Make	Depth	Type	Size	Qty	Make
Guide Shoe					Packer					Top Plug	4.5	1	
Float Shoe					Bridge Plug					Bottom Plug			
Float Collar					Retainer					SSR plug set			
Insert Float										Plug Container	4.5	1	
Stage Tool										Centralizers			

Miscellaneous Materials

Gelling Agt	Conc	Surfactant	Conc	Acid Type	Qty	Conc	%
Treatment Fld	Conc	Inhibitor	Conc	Sand Type	Size	Qty	

Fluid Data										
Stage/Plug #: 1										
Fluid #	Stage Type	Fluid Name	Qty	Qty uom	Mixing Density lbm/gal	Yield ft ³ /sk	Mix Fluid Gal/sk	Rate bbl/min	Total Mix Fluid Gal/sk	
1	Water Spacer		50	bbl	8.33	.0	.0	6.0		
2	Lead Cement	VARICEM (TM) CEMENT (452009)	370	sacks	12.8	1.6	7.31	6.0		
3	Tail Cement	VARICEM (TM) CEMENT (452009)	660	sacks	13.2	1.47	6.32	6.0		
4	KCL Displacement		100.4	bbl	.	.0	.0	10.0		
Calculated Values		Pressures		Volumes						
Displacement	100.4	Shut In: Instant		Lost Returns	0	Cement Slurry	278.2	Pad		
Top Of Cement		5 Min		Cement Returns	0	Actual Displacement	100.4	Treatment		
Frac Gradient		15 Min		Spacers	50	Load and Breakdown		Total Job	428	
Rates										
Circulating	8	Mixing	6	Displacement	10	Avg. Job	8			
Cement Left In Pipe	Amount	47.39 ft	Reason	Shoe Joint						
Frac Ring # 1 @	ID	Frac ring # 2 @	ID	Frac Ring # 3 @	ID	Frac Ring # 4 @	ID			
The Information Stated Herein Is Correct				Customer Representative Signature						

The Road to Excellence Starts with Safety

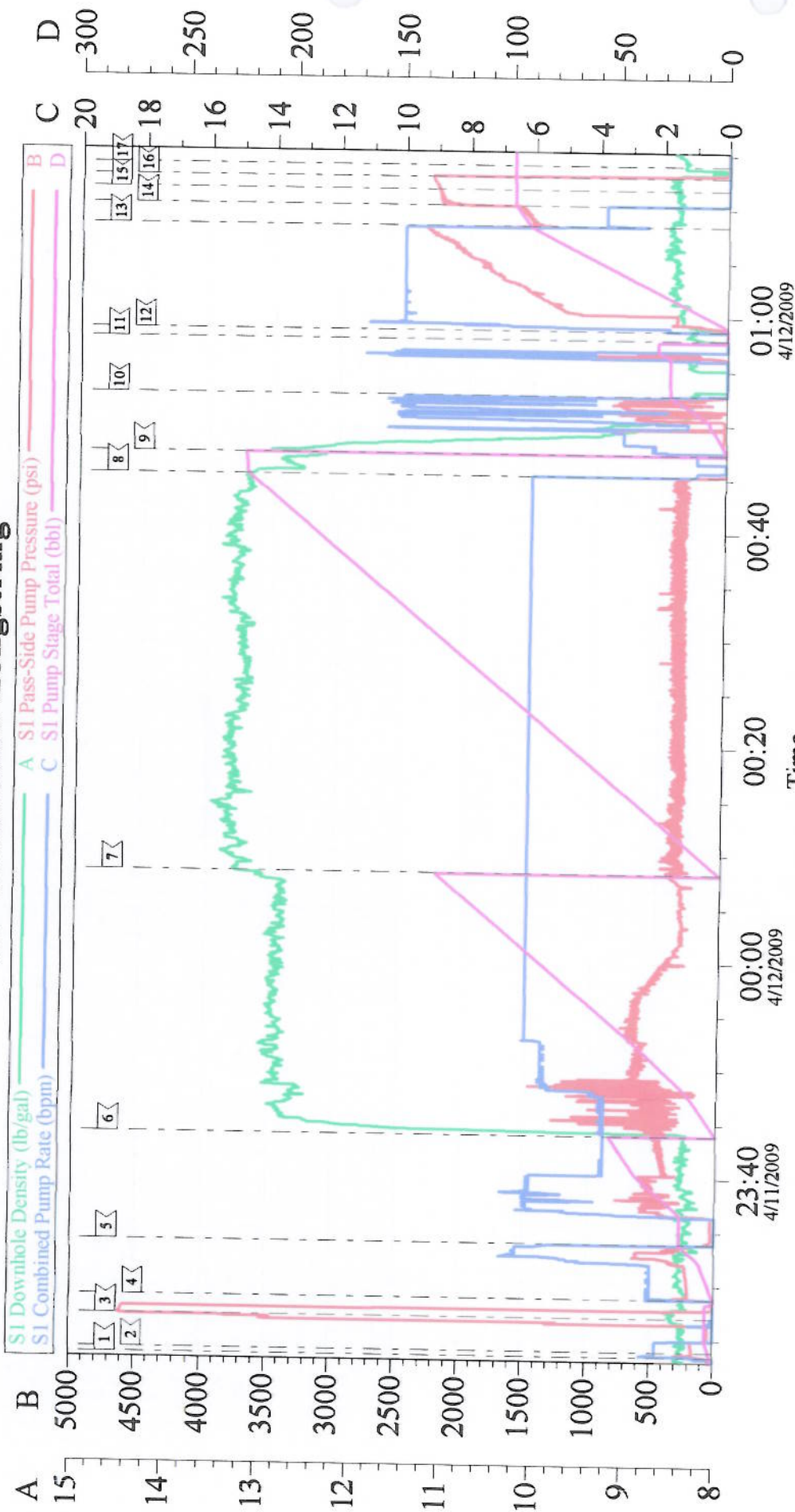
Sold To #: 338668	Ship To #: 2713362	Quote #:	Sales Order #: 6611371
Customer: CHEVRON - MID-CONTINENT EBIZ		Customer Rep: GEISER, GREG	
Well Name: SKR	Well #: 698-09-AV-19	API/UWI #: 05-045-17285	
Field: PICEANCE	City (SAP): PARACHUTE	County/Parish: Garfield	State: Colorado
Legal Description:			
Lat: N 39.551 deg. OR N 39 deg. 33 min. 4.046 secs.		Long: W 108.33 deg. OR W -109 deg. 40 min. 12.565 secs.	
Contractor: H&P 316	Rig/Platform Name/Num: H&P 316		
Job Purpose: Cement Production Casing			Ticket Amount:
Well Type: Development Well	Job Type: Cement Production Casing		
Sales Person: METLI, MARSHALL	Srv Supervisor: CALDWELL, JEFFREY	MBU ID Emp #: 369111	

Activity Description	Date/Time	Cht #	Rate bbl/min	Volume bbl		Pressure psig		Comments
				Stage	Total	Tubing	Casing	
Call Out	04/11/2009 03:45							ELITE #9
Pre-Convoy Safety Meeting	04/11/2009 05:40							BRENT BANKS WAS SAFETY OBSERVER FOR JOB.
Crew Leave Yard	04/11/2009 06:00							PLUG CONTAINER # D0953.
Arrive At Loc	04/11/2009 21:30							CASING WAS STILL BEING RUN
Safety Meeting	04/11/2009 21:31							WATER SAMPLE TAKEN RESULTS AS FOLLOWS: PH:8.77,POTASSIUM:250,CALCIUM:120,IRON:3,CHLORIDES:250,SULFATES:BELOW 200,TEMP:52 DEGREES,TDS:1090
Rig-Up Equipment	04/11/2009 21:40							8 5/8" 24 # SURFACE SET AT 1060
Pre-Job Safety Meeting	04/11/2009 22:50							UNITS OF GAS PRIOR TO JOB.
Start Job	04/11/2009 23:23							TD:6560 TP:6526.49 SJ:47.39 MUD:10.5 PPG 7 7/8" HOLE
Prime Pumps	04/11/2009 23:23							H2O
Test Lines	04/11/2009 23:27					4500.0		

Cementing Job Log

Activity Description	Date/Time	Cht #	Rate bbl/min	Volume bbl		Pressure psig		Comments
				Stage	Total	Tubing	Casing	
Pump Spacer	04/11/2009 23:28		6	50	50		606.0	10 LBS POLYFLAKE AND 5 LBS DYE LAST 20 BBLS.PLUG CONTAINER STARTED LEAKING ON SPACER WE SHUT DOWN AND FIXED LEAK.STARTED PUMPING AND THERE WAS NO LEAKS.
Pump Lead Cement	04/11/2009 23:43		6	105.4	105.4		310.0	370 SKS 12.8 PPG 1.6 CUFT/SAK 7.31 GAL/SAK
Pump Tail Cement	04/12/2009 00:08		6	172.8	172.8		396.0	660 SKA 13.2 PPG 1.47 CUFT/SAK 6.32 GAL/SAK
Shutdown	04/12/2009 00:45							WP:140,BP:13
Clean Lines	04/12/2009 00:47							H2O.WE HAD A LEAK IN WASH UP LINE SO WE SHUT DOWN TO FIX LEAK.STARTED PUMPING-NO LEAK.
Drop Top Plug	04/12/2009 00:57							PLUG AWAY
Pump Displacement	04/12/2009 00:58		10	100.4	100.4		2330.0	1.5 BAGS KCL PER 10 BBLS.
Slow Rate	04/12/2009 01:08		4	90	90		1520.0	
Bump Plug	04/12/2009 01:10		4	100.4	100.4		2300.0	PLUG BUMPED
Check Floats	04/12/2009 01:11							FLOATS HELD 1 BBL BACK. GOOD CIRCULATION THROUGH OUT JOB.
End Job	04/12/2009 01:14							
Post-Job Safety Meeting (Pre Rig-Down)	04/12/2009 01:16							
Rig-Down Equipment	04/12/2009 01:20							
Crew Leave Location	04/12/2009 03:00							THANK YOU FOR CHOOSING HALLIBURTON JEFF CALDWELL AND CREW.

4.5" Production Longstring



Local Event Log

<input type="checkbox"/> 1 START JOB	4/11/2009 23:23:28	<input type="checkbox"/> 2 PRIME LINES	4/11/2009 23:23:55	<input type="checkbox"/> 3 PRESSURE TEST	4/11/2009 23:27:03
<input type="checkbox"/> 4 PUMP SPACER	4/11/2009 23:28:47	<input type="checkbox"/> 5 SHUT DOWN TO FIX HEAD LEAK	4/11/2009 23:33:55	<input type="checkbox"/> 6 PUMP LEAD CEMENT	4/11/2009 23:43:54
<input type="checkbox"/> 7 PUMP TAIL CEMENT	4/12/2009 00:08:15	<input type="checkbox"/> 8 SHUT DOWN	4/12/2009 00:45:18	<input type="checkbox"/> 9 WASH LINES	4/12/2009 00:47:18
<input type="checkbox"/> 10 FIX LEAK IN RETURN LINE	4/12/2009 00:52:45	<input type="checkbox"/> 11 DROP PLUG	4/12/2009 00:57:53	<input type="checkbox"/> 12 PUMP KCL DISPLACEMENT	4/12/2009 00:58:44
<input type="checkbox"/> 13 SLOW RATE	4/12/2009 01:08:22	<input type="checkbox"/> 14 BUMP PLUG	4/12/2009 01:10:15	<input type="checkbox"/> 15 CHECK FLOATS	4/12/2009 01:11:44
<input type="checkbox"/> 16 RELEASE PRESSURE	4/12/2009 01:12:54	<input type="checkbox"/> 17 END JOB	4/12/2009 01:14:00		

Customer: CHEVRON - MID-CONTINENT	Job Date: 11-Apr-2009	Sales Order #: 6611371
Well Description: Skinner Ridge 698-09-AV-19	Job Type: Production	ADC Used: Yes
Company Rep: Greg Geiser	Cement Supervisor: Jeff Caldwell	Elite #/Operator: 9, Steven Creech