
CHEVRON - MID-CONTINENT EBIZ

SKR 698-09-AV-19
PICEANCE
Garfield County , Colorado

Cement Surface Casing
12-Mar-2009

Job Site Documents

The Road to Excellence Starts with Safety

Sold To #: 338668	Ship To #: 2713362	Quote #:	Sales Order #: 6550154
Customer: CHEVRON - MID-CONTINENT EBIZ		Customer Rep:	
Well Name: SKR	Well #: 698-09-AV-19	API/UWI #: 05-045-17285	
Field: PICEANCE	City (SAP): PARACHUTE	County/Parish: Garfield	State: Colorado
Lat: N 39.551 deg. OR N 39 deg. 33 min. 4.046 secs.		Long: W 108.33 deg. OR W -109 deg. 40 min. 12.565 secs.	
Contractor: H&P 318	Rig/Platform Name/Num: H&P 318		
Job Purpose: Cement Surface Casing			
Well Type: Development Well		Job Type: Cement Surface Casing	
Sales Person: DUNNING, DUSTIN	Srv Supervisor: DEROSA, JAY	MBU ID Emp #: 338788	

Job Personnel

HES Emp Name	Exp Hrs	Emp #	HES Emp Name	Exp Hrs	Emp #	HES Emp Name	Exp Hrs	Emp #
ANGLESTEIN, TROY Edward WM		436099	DEROSA, JAY M		338788	Dickey, Matthew		457739
PONDER, THOMAS Lynn		427112	Smith, Chris		452619	Sullivan, Mark		425453

Equipment

HES Unit #	Distance-1 way	HES Unit #	Distance-1 way	HES Unit #	Distance-1 way	HES Unit #	Distance-1 way
10565341	120 mile	10616651C	120 mile	10829466	120 mile		

Job Hours

Date	On Location Hours	Operating Hours	Date	On Location Hours	Operating Hours	Date	On Location Hours	Operating Hours
3-12-09	3	1						
TOTAL			Total is the sum of each column separately					

Job

Formation Name	Formation Depth (MD)	Top	Bottom	Form Type	Job depth MD	Job Depth TVD	Water Depth	Perforation Depth (MD)	From	To	Job Times	Date	Time	Time Zone
				BHST	1060. ft	1060. ft					Called Out	12 - Mar - 2009	13:30	MST
											On Location	12 - Mar - 2009	17:00	MST
											Job Started	12 - Mar - 2009	21:06	MST
											Job Completed	12 - Mar - 2009	21:55	MST
											Departed Loc	12 - Mar - 2009	23:30	MST

Well Data

Description	New / Used	Max pressure psig	Size in	ID in	Weight lbm/ft	Thread	Grade	Top MD ft	Bottom MD ft	Top TVD ft	Bottom TVD ft
-------------	------------	-------------------	---------	-------	---------------	--------	-------	-----------	--------------	------------	---------------

Sales/Rental/3rd Party (HES)

Description	Qty	Qty uom	Depth	Supplier
PLUG,CMTG,TOP,8 5/8,HWE,7.20 MIN/8.09 MA	1	EA		
ADC (AUTO DENSITY CTRL) SYS, /JOB,ZI	1	JOB		
PORT. DAS W/CEMWIN;ACQUIRE W/HES, ZI	1	JOB		

Tools and Accessories

Type	Size	Qty	Make	Depth	Type	Size	Qty	Make	Depth	Type	Size	Qty	Make
Guide Shoe					Packer					Top Plug	8 5/8	1	
Float Shoe					Bridge Plug					Bottom Plug			
Float Collar					Retainer					SSR plug set			
Insert Float										Plug Container	8 5/8	1	
Stage Tool										Centralizers			

Miscellaneous Materials

Gelling Agt	Conc	Surfactant	Conc	Acid Type	Qty	Conc	%
Treatment Fld	Conc	Inhibitor	Conc	Sand Type	Size	Qty	

Fluid Data

Stage/Plug #: 1

Fluid #	Stage Type	Fluid Name	Qty	Qty uom	Mixing Density lbm/gal	Yield ft ³ /sk	Mix Fluid Gal/sk	Rate bbl/min	Total Mix Fluid Gal/sk
1	DYE SPACER		50	bbl	.	.0	.0	.0	
2	Lead Cement	VERSACEM (TM) SYSTEM (452010)	140	sacks	12.3	2.38	13.75		
	2 %	CAL-SEAL 60, 50 LB BAG (101217146)							
	2 %	ECONOLITE (100001580)							
	0.3 %	VERSASET, 55 LB SK (101376573)							
	5.64 lbm	SALT, 100 LB BAG (100003652)							
	0.125 lbm	POLY-E-FLAKE (101216940)							
	0.25 %	D-AIR 3000 (101007446)							
	13.75 Gal	FRESH WATER							
3	Tail Cement	VERSACEM (TM) SYSTEM (452010)	155	sacks	12.8	2.11	11.75		
	2 %	CAL-SEAL 60, 50 LB BAG (101217146)							
	2 %	ECONOLITE (100001580)							
	0.3 %	VERSASET, 55 LB SK (101376573)							
	5.64 lbm	SALT, 100 LB BAG (100003652)							
	11.75 Gal	FRESH WATER							
4	DISPLACEMENT		63.7	bbl	.	.0	.0	.0	

Calculated Values		Pressures		Volumes					
Displacement	63.7	Shut In: Instant		Lost Returns	no	Cement Slurry	117.5	Pad	
Top Of Cement	Surface	5 Min		Cement Returns	40bbls	Actual Displacement	63.7	Treatment	
Frac Gradient		15 Min		Spacers	50bbls	Load and Breakdown		Total Job	

Rates									
Circulating	Rig	Mixing	7	Displacement	9	Avg. Job			
Cement Left In Pipe	Amount	43.27 ft	Reason	Shoe Joint					
Frac Ring # 1 @	ID	Frac ring # 2 @	ID	Frac Ring # 3 @	ID	Frac Ring # 4 @	ID		

The Information Stated Herein Is Correct	Customer Representative Signature
--	-----------------------------------

The Road to Excellence Starts with Safety

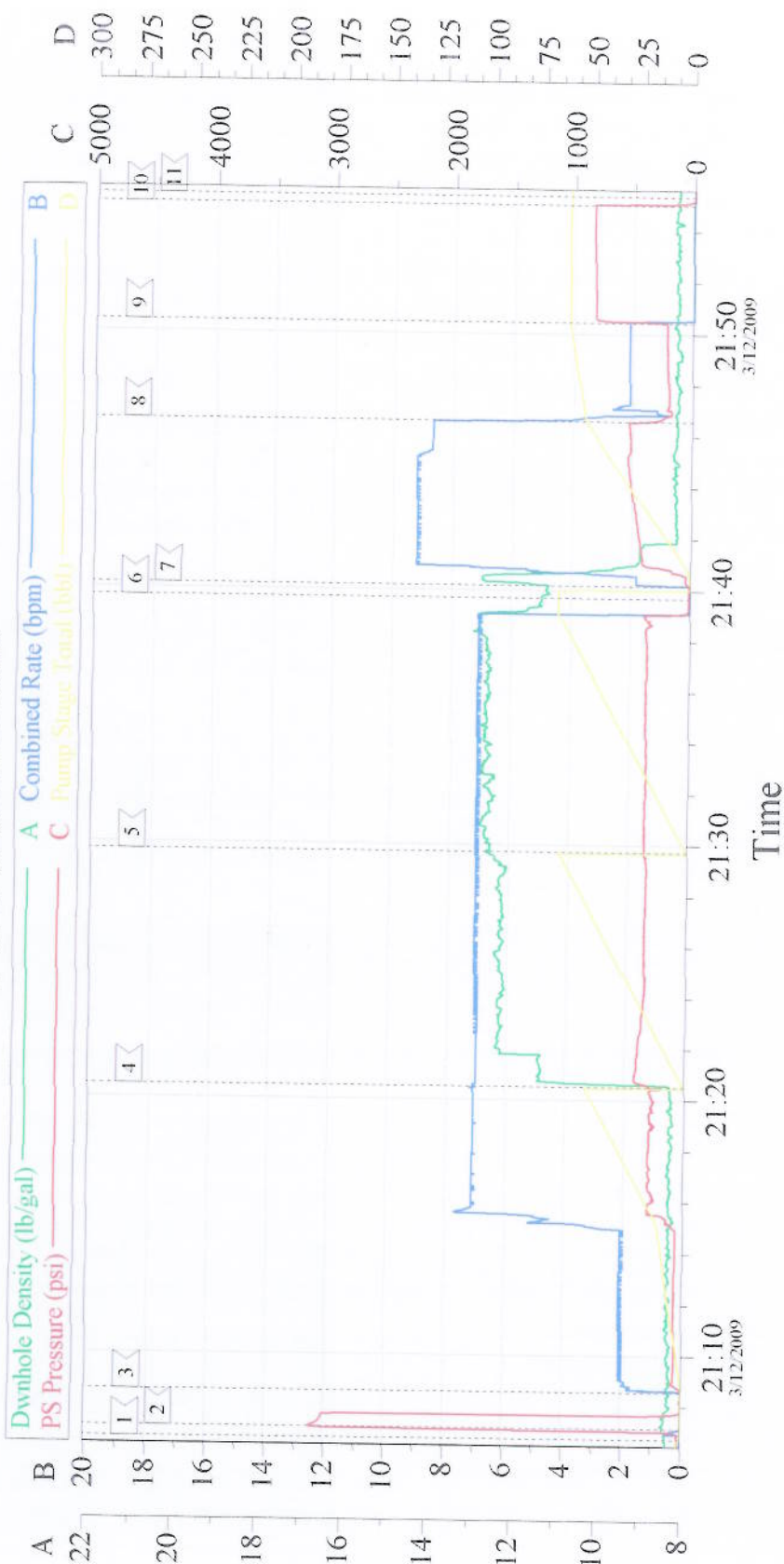
Sold To #: 338668	Ship To #: 2713362	Quote #:	Sales Order #: 6550154
Customer: CHEVRON - MID-CONTINENT EBIZ		Customer Rep:	
Well Name: SKR	Well #: 698-09-AV-19	API/UWI #: 05-045-17285	
Field: PICEANCE	City (SAP): PARACHUTE	County/Parish: Garfield	State: Colorado
Legal Description:			
Lat: N 39.551 deg. OR N 39 deg. 33 min. 4.046 secs.		Long: W 108.33 deg. OR W -109 deg. 40 min. 12.565 secs.	
Contractor: H&P 318		Rig/Platform Name/Num: H&P 318	
Job Purpose: Cement Surface Casing		Ticket Amount:	
Well Type: Development Well		Job Type: Cement Surface Casing	
Sales Person: DUNNING, DUSTIN		Srv Supervisor: DEROSA, JAY	
		MBU ID Emp #: 338788	

Activity Description	Date/Time	Cht #	Rate bbl/ min	Volume bbl		Pressure psig		Comments
				Stage	Total	Tubing	Casing	
Call Out	03/12/2009 13:30							
Pre-Convoy Safety Meeting	03/12/2009 15:00							
Arrive At Loc	03/12/2009 17:00							
Pre-Rig Up Safety Meeting	03/12/2009 17:00							
Rig-Up Equipment	03/12/2009 17:30							
Wait on Customer or Customer Sub-Contractor Equip	03/12/2009 18:00							Rig running casing. HES arrived to location two hours early.
Wait on Customer or Customer Sub-Contractor Equipm	03/12/2009 20:30							
Pre-Job Safety Meeting	03/12/2009 20:45							
Start Job	03/12/2009 21:06	1						
Test Lines	03/12/2009 21:07	2					3000. 0	
Pump Spacer	03/12/2009 21:08	3	2	50			83.0	H2O Spacer. Red Dye and Poly-E-Flake in last 20 bbls of spacer. 6x5 pressure @ 10 psi
Pump Lead Cement	03/12/2009 21:20	4	7	59.3			420.0	140 sks @ 12.3 ppg 2.38 ft3/sk 13.75 gal/sk 6x5 pressure @ 12 psi
Pump Tail Cement	03/12/2009 21:29	5	7	58.2			358.0	155 sks @ 12.8 ppg 2.11 ft3/sk 11.75 gal/sk 6x5 pressure @ 14 psi
Drop Top Plug	03/12/2009 21:39	6						
Pump Displacement	03/12/2009 21:40	7	9				390.0	Fresh Water

Activity Description	Date/Time	Cht #	Rate bbl/ min	Volume bbl		Pressure psig		Comments
				Stage	Total	Tubing	Casing	
Slow Rate	03/12/2009 21:46	8	2	53			200.0	
Bump Plug	03/12/2009 21:50	9	2	63.7			825.0	Plug down
Check Floats	03/12/2009 21:55	10						Floats held. Good returns throughout entire job. 40 bbs cement to surface. Pipe was not reciprocated during job.
End Job	03/12/2009 21:55	11						Thanks for using Halliburton, Jay DeRosa and crew.
Post-Job Safety Meeting (Pre Rig-Down)	03/12/2009 22:10							
Rig-Down Equipment	03/12/2009 22:20							
Pre-Convoy Safety Meeting	03/12/2009 23:30							
Depart Location for Service Center or Other Site	03/12/2009 23:30							

Signature _____

8 5/8 SURFACE



Event Log				
1 Start Job	21:06:43	2 Test Lines	21:07:08	3 Pump Spacer
4 Pump Lead Cement	21:20:31	5 Pump Tail Cement	21:29:44	6 Drop Top Plug
7 Pump Displacement	21:40:10	8 Slow Rate	21:46:36	9 Bump Plug
10 Check Floats	21:55:01	11 End Job	21:55:20	

Customer: Chevron	Job Date: 3-12-09	Ticket #: 6550154
Well Description: 8 5/8 Surface	CEMENTER Jay DeRosa	ADC USED YES
LEASE: SKR Well # 698-09-AV-19	Truck Elite 4 Oper: Troy Anglesstein	CO REP Randy Morgan

CemWin v1 7.2
12-Mar-09 22:17