

---

# **CHEVRON - MID-CONTINENT EBIZ**

---

**SKR 698-09-AV-17  
SKINNER RIDGE  
Garfield County , Colorado**

## **Cement Surface Casing** **24-Mar-2009**

### **Job Site Documents**

*The Road to Excellence Starts with Safety*

Sold To #: 338668	Ship To #: 2713360	Quote #:	Sales Order #: 6576844
Customer: CHEVRON - MID-CONTINENT EBIZ	Customer Rep: MORGAN, RANDY		
Well Name: SKR	Well #: 698-09-AV-17	API/UWI #: 05-045-17300	
Field: SKINNER RIDGE	City (SAP): PARACHUTE	County/Parish: Garfield	State: Colorado
Lat: N 39.551 deg. OR N 39 deg. 33 min. 3.982 secs.	Long: W 108.33 deg. OR W -109 deg. 40 min. 12.598 secs.		
Contractor: H&P 318	Rig/Platform Name/Num: H&P 318		
Job Purpose: Cement Surface Casing			
Well Type: Development Well	Job Type: Cement Surface Casing		
Sales Person: DUNNING, DUSTIN	Srv Supervisor: NELSON, RYAN	MBU ID Emp #: 386514	

### Job Personnel

HES Emp Name	Exp Hrs	Emp #	HES Emp Name	Exp Hrs	Emp #	HES Emp Name	Exp Hrs	Emp #
BETZ, KLAYTON Alan	5	446140	BLANCHETTE, JAMES George	5	371360	DUBON, TODD N	5	443351
NELSON, RYAN Cody	5	386514	OLDS, RYAN John	5	418018			

### Equipment

HES Unit #	Distance-1 way	HES Unit #	Distance-1 way	HES Unit #	Distance-1 way	HES Unit #	Distance-1 way
10567589C	120 mile	10719774	120 mile	10951249	120 mile	10995027	120 mile
11021972	120 mile	11027039	120 mile				

### Job Hours

Date	On Location Hours	Operating Hours	Date	On Location Hours	Operating Hours	Date	On Location Hours	Operating Hours
3-24-09	5	2						
TOTAL			Total is the sum of each column separately					

### Job

Formation Name	Formation Depth (MD)	Top	Bottom	Form Type	Job depth MD	Job Depth TVD	Water Depth	Perforation Depth (MD)	From	To
				BHST	1045. ft	1045. ft	4. ft			

### Job Times

	Date	Time	Time Zone
Called Out	24 - Mar - 2009	05:30	MST
On Location	24 - Mar - 2009	09:30	MST
Job Started	24 - Mar - 2009	11:28	MST
Job Completed	24 - Mar - 2009	12:15	MST
Departed Loc	24 - Mar - 2009	13:30	MST

### Well Data

Description	New / Used	Max pressure psig	Size in	ID in	Weight lbm/ft	Thread	Grade	Top MD ft	Bottom MD ft	Top TVD ft	Bottom TVD ft
Open Hole				12.25				0.	1045.		
Surface Casing	New		8.625	8.097	24.		J-55	0.	1029.		

### Sales/Rental/3<sup>rd</sup> Party (HES)

Description	Qty	Qty uom	Depth	Supplier
PLUG,CMTG,TOP,8 5/8,HWE,7.20 MIN/8.09 MA	1	EA		
PORT. DAS W/CEMWIN;ACQUIRE W/HES, ZI	1	JOB		
ADC (AUTO DENSITY CTRL) SYS, /JOB,ZI	1	JOB		

### Tools and Accessories

Type	Size	Qty	Make	Depth	Type	Size	Qty	Make	Depth	Type	Size	Qty	Make
Guide Shoe					Packer					Top Plug	8 5/8	1	HES
Float Shoe					Bridge Plug					Bottom Plug			
Float Collar					Retainer					SSR plug set			
Insert Float										Plug Container	8 5/8	1	HES
Stage Tool										Centralizers			

### Miscellaneous Materials

Gelling Agt	Conc	Surfactant	Conc	Acid Type	Qty	Conc	%
Treatment Fld	Conc	Inhibitor	Conc	Sand Type	Size		Qty



Fluid Data									
Stage/Plug #: 1									
Fluid #	Stage Type	Fluid Name	Qty	Qty uom	Mixing Density lbm/gal	Yield ft <sup>3</sup> /sk	Mix Fluid Gal/sk	Rate bbl/min	Total Mix Fluid Gal/sk
1	PolyFlake Dyed Spacer		50	bbl	8.33	.0	.0	.0	
2	Lead Cement	VERSACEM (TM) SYSTEM (452010)	140	sacks	12.3	2.38	13.75		
3	Tail Cement	VERSACEM (TM) SYSTEM (452010)	155	sacks	12.8	2.11	11.75		
4	Fresh Water Displacement		62.7	bbl	8.33	.0	.0	.0	
Calculated Values		Pressures		Volumes					
Displacement	62.7	Shut In: Instant		Lost Returns	No	Cement Slurry	117.5	Pad	
Top Of Cement	0	5 Min		Cement Returns	20 bbl	Actual Displacement	62.7	Treatment	
Frac Gradient		15 Min		Spacers		Load and Breakdown		Total Job	
Rates									
Circulating		Mixing	7	Displacement	8	Avg. Job	7		
Cement Left In Pipe	Amount	42.8 ft	Reason	Shoe Joint					
Frac Ring # 1 @	ID	Frac ring # 2 @	ID	Frac Ring # 3 @	ID	Frac Ring # 4 @	ID		
The Information Stated Herein Is Correct				Customer Representative Signature					

*The Road to Excellence Starts with Safety*

Sold To #: 338668	Ship To #: 2713360	Quote #:	Sales Order #: 6576844
Customer: CHEVRON - MID-CONTINENT EBIZ	Customer Rep: MORGAN, RANDY		
Well Name: SKR	Well #: 698-09-AV-17	API/UWI #: 05-045-17300	
Field: SKINNER RIDGE	City (SAP): PARACHUTE	County/Parish: Garfield	State: Colorado
Legal Description:			
Lat: N 39.551 deg. OR N 39 deg. 33 min. 3.982 secs.		Long: W 108.33 deg. OR W -109 deg. 40 min. 12.598 secs.	
Contractor: H&P 318	Rig/Platform Name/Num: H&P 318		
Job Purpose: Cement Surface Casing		Ticket Amount:	
Well Type: Development Well	Job Type: Cement Surface Casing		
Sales Person: DUNNING, DUSTIN	Srvs Supervisor: NELSON, RYAN	MBU ID Emp #: 386514	

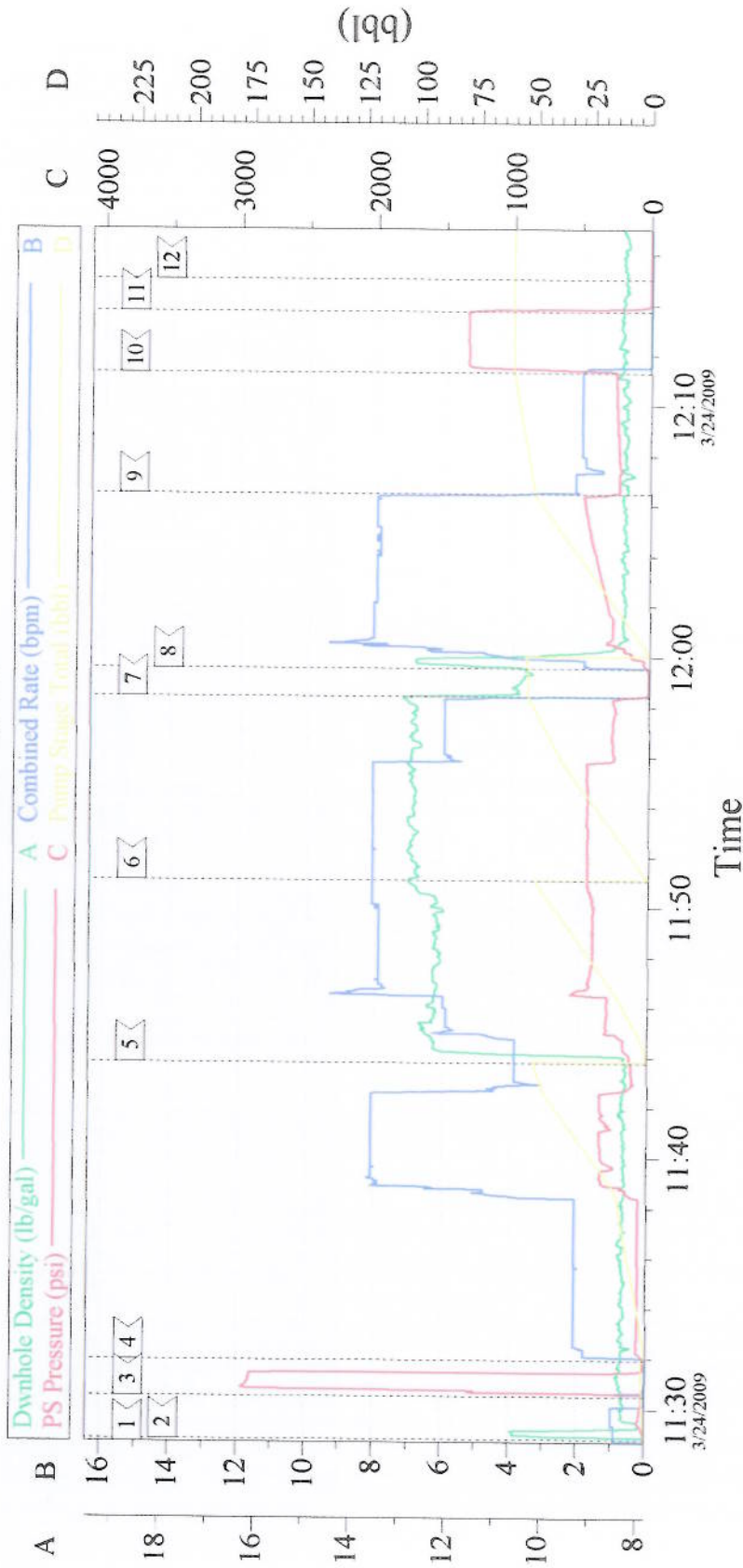
Activity Description	Date/Time	Cht #	Rate bbl/min	Volume bbl		Pressure psig		Comments
				Stage	Total	Tubing	Casing	
Call Out	03/24/2009 05:30							Jim Blanchette Safety Person for the day
Arrive At Loc	03/24/2009 09:30							Rig running casing
Assessment Of Location Safety Meeting	03/24/2009 09:40							All HES personal
Pre-Rig Up Safety Meeting	03/24/2009 09:45							All HES personal
Rig-Up Equipment	03/24/2009 09:50							
Pre-Job Safety Meeting	03/24/2009 11:15							All personal on location
Start Job	03/24/2009 11:28							TD- 1045' TP-1025' SJ- 42.83' CASING 8 5/8" 24# J-55 HOLE 12 1/4" MUD 9
Other	03/24/2009 11:28			1			62.0	Fill lines
Test Lines	03/24/2009 11:30						3000.0	
Pump Spacer 1	03/24/2009 11:31		8	50			334.0	Fresh water with Poly-Flake and Red Dye
Pump Lead Cement	03/24/2009 11:43		8	59.3			435.0	140 Sks 12.3 ppg 2.38 yield 13.75 gal/sk
Pump Tail Cement	03/24/2009 11:51		6	58.2			445.0	155 Sks 12.8 ppg 2.11 yield 11.75 gal/sk
Shutdown	03/24/2009 11:58							
Drop Top Plug	03/24/2009 11:58							
Pump Displacement	03/24/2009 11:59		8	62.7			440.0	Fresh Water
Cement Returns to Surface	03/24/2009 12:05							Well circulated 20 bbls of cement to surface
Slow Rate	03/24/2009 12:06		2	50			260.0	

## Cementing Job Log

Activity Description	Date/Time	Cht #	Rate bbl/ min	Volume bbl		Pressure psig		Comments
				Stage	Total	Tubing	Casing	
Bump Plug	03/24/2009 12:11		2	62.7			1340. 0	
Check Floats	03/24/2009 12:14							Floats held
End Job	03/24/2009 12:15							Well was circulated prior to the job. Good returns throughout the job. Pipe was static throughout the job. Thank you for using Halliburton-Ryan Nelson & crew



# 8 5/8" Surface



## Event Log

1	Start Job	11:28:41	2	Fill Lines	11:28:48	3	Pressure Test	11:30:30
4	Pump Spacer	11:31:57	5	Pump Lead Cement	11:43:48	6	Pump Tail Cement	11:51:04
7	Shut Down/Drop Plug	11:58:24	8	Pump Displacement	11:59:31	9	Slow Rate	12:06:28
10	Bump Plug	12:11:19	11	Check Floats	12:13:45	12	End Job	12:15:01

Customer: Chevron	Job Date: 3-24-09	Ticket #: 6576844
Well Number: 698-09-AV-17	Job Type: Surface	ADC Used: Yes
Supervisor: Ryan Nelson	Company Rep.: Randy Morgan	Operator/Truck: Ryan Olds/Elite 3