
OXY GRAND JUNCTION

**CC 697-05-43
GRAND VALLEY
Garfield County , Colorado**

Cement Surface Casing **16-Jan-2012**

Post Job Report

The Road to Excellence Starts with Safety

Sold To #: 344034	Ship To #: 05-045-20371	Quote #:	Sales Order #: 9107180
Customer: OXY GRAND JUNCTION EBUSINESS	Customer Rep: WYLIE, CAL		
Well Name: CC	Well #: 697-05-43	API/UWI #: 05-045-20371	
Field: GRAND VALLEY	City (SAP): UNKNOWN	County/Parish: Garfield	State: Colorado
Lat: N 39.554 deg. OR N 39 deg. 33 min. 15.984 secs.	Long: W 108.242 deg. OR W -109 deg. 45 min. 27.324 secs.		
Contractor: H&P 353	Rig/Platform Name/Num: H&P 353		
Job Purpose: Cement Surface Casing			
Well Type: Development Well	Job Type: Cement Surface Casing		
Sales Person: METLI, MARSHALL	Srvc Supervisor: MAGERS, MICHAEL	MBU ID Emp #: 339439	

Job Personnel

HES Emp Name	Exp Hrs	Emp #	HES Emp Name	Exp Hrs	Emp #	HES Emp Name	Exp Hrs	Emp #
BORSZICH, STEPHEN A	13	412388	GOWEN, WESLEY M	13	496205	MAGERS, MICHAEL Gerard	13	339439
SINCLAIR, DAN J	13	338784						

Equipment

HES Unit #	Distance-1 way	HES Unit #	Distance-1 way	HES Unit #	Distance-1 way	HES Unit #	Distance-1 way
10722398	60 mile	10871245	60 mile	11139330	60 mile	11259886	60 mile
11360881	60 mile						

Job Hours

Date	On Location Hours	Operating Hours	Date	On Location Hours	Operating Hours	Date	On Location Hours	Operating Hours
01/16/2012	16	4						

TOTAL Total is the sum of each column separately

Job

Formation Name	Formation Depth (MD)	Top	Bottom	Form Type	Job depth MD	Job Depth TVD	Water Depth	Perforation Depth (MD)	From	To	Called Out	Date	Time	Time Zone
				BHST	2732. ft	2730. ft						15 - Jan - 2012	23:00	MST
											On Location	16 - Jan - 2012	06:00	MST
											Job Started	16 - Jan - 2012	12:20	MST
											Job Completed	16 - Jan - 2012	18:09	MST
											Departed Loc	16 - Jan - 2012	19:00	MST

Well Data

Description	New / Used	Max pressure psig	Size in	ID in	Weight lbm/ft	Thread	Grade	Top MD ft	Bottom MD ft	Top TVD ft	Bottom TVD ft
-------------	------------	-------------------	---------	-------	---------------	--------	-------	-----------	--------------	------------	---------------

Sales/Rental/3rd Party (HES)

Description	Qty	Qty uom	Depth	Supplier
PLUG,CMTG,TOP,9 5/8,HWE,8.16 MIN/9.06 MA	1	EA		

Tools and Accessories

Type	Size	Qty	Make	Depth	Type	Size	Qty	Make	Depth	Type	Size	Qty	Make
Guide Shoe					Packer					Top Plug	9.625	1	HES
Float Shoe					Bridge Plug					Bottom Plug			
Float Collar					Retainer					SSR plug set			
Insert Float										Plug Container	9.625	1	HES
Stage Tool										Centralizers			

Miscellaneous Materials

Gelling Agt	Conc	Surfactant	Conc	Acid Type	Qty	Conc	%
Treatment Fld	Conc	Inhibitor	Conc	Sand Type	Size	Qty	

Fluid Data

Stage/Plug #: 1	Fluid #	Stage Type	Fluid Name	Qty	Qty uom	Mixing Density lbm/gal	Yield ft ³ /sk	Mix Fluid Gal/sk	Rate bbl/min	Total Mix Fluid Gal/sk
-----------------	---------	------------	------------	-----	---------	------------------------	---------------------------	------------------	--------------	------------------------

Stage/Plug #: 1									
Fluid #	Stage Type	Fluid Name	Qty	Qty uom	Mixing Density lbm/gal	Yield ft ³ /sk	Mix Fluid Gal/sk	Rate bbl/min	Total Mix Fluid Gal/sk
1	Fresh Water Spacer		10.00	bbl	8.33	.0	.0	5.0	
2	Gel Water Spacer	SUPER FLUSH 101 - SBM (12199)	20.00	bbl	8.34	.0	.0	5.0	
3	Fresh Water Spacer		10.00	bbl	8.33	.0	.0	5.0	
4	Lead Cement	VERSACEM (TM) SYSTEM (452010)	1060.0	sacks	12.3	2.33	12.62	6.0	12.62
		12.62 Gal FRESH WATER							
5	Tail Cement	VERSACEM (TM) SYSTEM (452010)	160.0	sacks	12.8	2.07	10.67	6.0	10.67
		10.67 Gal FRESH WATER							
6	Water Spacer		210.00	bbl	8.34	.0	.0	8.0	
Calculated Values		Pressures		Volumes					
Displacement	210	Shut In: Instant		Lost Returns	539	Cement Slurry	531	Pad	
Top Of Cement	SURFACE	5 Min		Cement Returns	16	Actual Displacement	210	Treatment	
Frac Gradient		15 Min		Spacers	40	Load and Breakdown		Total Job	781
Rates									
Circulating	RIG	Mixing	6	Displacement	6/2	Avg. Job	6		
Cement Left In Pipe	Amount	47 ft	Reason	Shoe Joint					
Frac Ring # 1 @	ID	Frac ring # 2 @	ID	Frac Ring # 3 @	ID	Frac Ring # 4 @	ID		
The Information Stated Herein Is Correct				Customer Representative Signature					

The Road to Excellence Starts with Safety

Sold To #: 344034	Ship To #: 05-045-20371	Quote #:	Sales Order #: 9107180
Customer: OXY GRAND JUNCTION EBUSINESS		Customer Rep: WYLIE, CAL	
Well Name: CC	Well #: 697-05-43	API/UWI #: 05-045-20371	
Field: GRAND VALLEY	City (SAP): UNKNOWN	County/Parish: Garfield	State: Colorado
Legal Description:			
Lat: N 39.554 deg. OR N 39 deg. 33 min. 15.984 secs.		Long: W 108.242 deg. OR W -109 deg. 45 min. 27.324 secs.	
Contractor: H&P 353		Rig/Platform Name/Num: H&P 353	
Job Purpose: Cement Surface Casing			Ticket Amount:
Well Type: Development Well		Job Type: Cement Surface Casing	
Sales Person: METLI, MARSHALL		Srvc Supervisor: MAGERS, MICHAEL	MBU ID Emp #: 339439

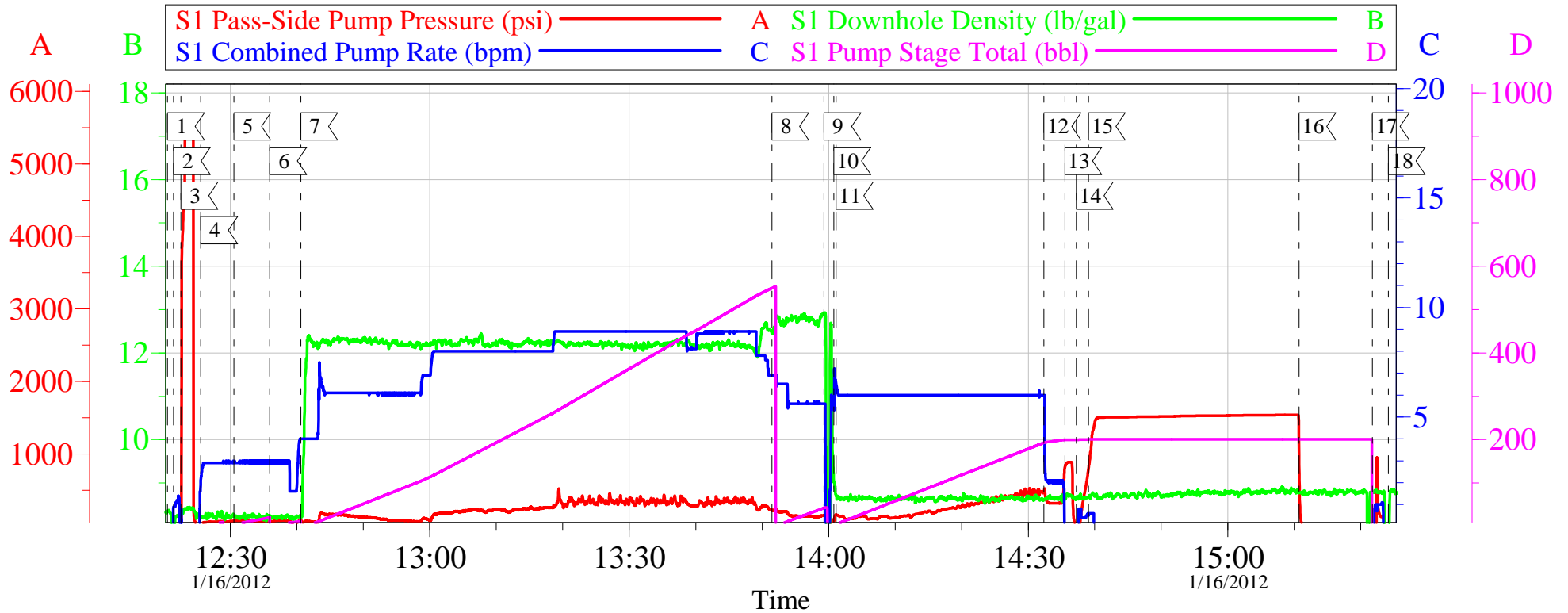
Activity Description	Date/Time	Cht #	Rate bbl/min	Volume bbl		Pressure psig		Comments
				Stage	Total	Tubing	Casing	
Crew Leave Yard	01/16/2012 00:30							HES ALL PRESENT
Arrive At Loc	01/16/2012 06:00							RIG STILL RUNNING CASING WHEN HES ARRIVED/RIG CIRCULATED 30 MIN WHILE HES RIGGED UP IN CELLER/OFFLINE SURFACE
Assessment Of Location Safety Meeting	01/16/2012 06:10							WINTER CONDITIONS/SNOWING/WINDY/COLD
Pre-Rig Up Safety Meeting	01/16/2012 07:15							JSA ON RIGGING UP
Rig-Up Equipment	01/16/2012 07:30							1 PICKUP, 1 ELITE, 1 BULK TRUCK, 2 SILO
Safety Huddle	01/16/2012 12:00							RIG CREW AND HES ALL PRESENT
Start Job	01/16/2012 12:20							TD-2732 TP-2716 SJ-47 MW-9.2 CSG- 9 5/8 36# J-55 OH- 14 3/4"
Other	01/16/2012 12:21		2	2			35.0	FILL LINES
Pressure Test	01/16/2012 12:22		0.5	0.5			5615.0	PSI TEST OK
Pump Spacer 1	01/16/2012 12:25		4	10			73.0	FRESH WATER/HAD NO RETURNS DURING THE JOB PUMPED 539 BBLs OF VOLUME
Pump Spacer 2	01/16/2012 12:30		4	20			60.0	GEL SPACER 5 GAL LGC .5 GAL PER 10/BBL
Pump Spacer 1	01/16/2012 12:35		2	10			80.0	FRESH WATER

Activity Description	Date/Time	Cht #	Rate bbl/min	Volume bbl		Pressure psig		Comments
				Stage	Total	Tubing	Casing	
Pump Lead Cement	01/16/2012 12:40		6	440			400.0	VERSACEM 1060 SKS 12.3 PPG 2.33 FT3/SK 12.62 GAL/SK 7 BOXES TUF-FIBER
Pump Tail Cement	01/16/2012 13:51		6	59			136.0	VERSACEM 160 SKS 12.8 PPG 2.07 FT3/SK 10.67 GAL/SK
Shutdown	01/16/2012 13:59							
Drop Plug	01/16/2012 14:00							PLUG AWAY NO PROBLEM
Pump Displacement	01/16/2012 14:01		6	210			500.0	FRESH WATER
Slow Rate	01/16/2012 14:32		2	195			366.0	NO CEMENT TO SURFACE/NO RETURNS DURING JOB
Bump Plug	01/16/2012 14:35		2	210			450.0	BUMPED PLUG
Check Floats	01/16/2012 14:37			210			884.0	FLOATS HELD/GOT ..75 BBLS BACK INTO TANKS
Pressure Test	01/16/2012 14:39		1	1			1516.0	9.625 CASING PRESSURE TEST
Release Casing Pressure	01/16/2012 15:10						1540.0	RELEASE PRESSURE
Pump Spacer 1	01/16/2012 15:21		0.5	1			380.0	PUMP SUGAR WATER INTO PARASITE STRING
End Job	01/16/2012 15:24							
Comment	01/16/2012 15:30							WAITING FOR FIRST TOP OUT STAGE
Start Job	01/16/2012 17:35							
Pump Spacer 1	01/16/2012 17:36		1	2			.0	FRESH WATER
Pump Cement	01/16/2012 17:37		2.5	15			73.0	TOPOUT 92 SKS 12.5 PPG 1.97 FT3/SK 10.96 GAL/SK 32 BBLS TOTAL
Shutdown	01/16/2012 17:44							
Pump Cement	01/16/2012 17:49		2.5	14			40.0	TOPOUT
Shutdown	01/16/2012 17:58							
Pump Cement	01/16/2012 18:05		2	3			40.0	TOPOUT

Activity Description	Date/Time	Cht #	Rate bbl/ min	Volume bbl		Pressure psig		Comments
				Stage	Total	Tubing	Casing	
Clean Lines	01/16/2012 18:07		2	2			40.0	FRESH WATER
End Job	01/16/2012 18:09							THANKS FOR USING HES AND THE CREW OF MIKE MAGERS

OXY H&P 353 CC 697-05-43

9.625 OFFLINE SURFACE



Local Event Log					
1	START JOB	12:20:34	2	FILL LINES	12:21:28
3	PRESSURE TEST	12:22:36	4	PUMP SPACER	12:25:33
5	PUMP GEL SPACER	12:30:32	6	PUMP SPACER	12:35:57
7	PUMP LEAD CEMENT	12:40:36	8	PUMP TAIL CEMENT	13:51:27
9	SHUT DOWN	13:59:17	10	DROP PLUG	14:00:46
11	PUMP DISPLACEMENT	14:01:07	12	SLOW RATE	14:32:23
13	BUMP PLUG	14:35:30	14	CHECK FLOATS	14:37:14
15	PRESSURE TEST CASING	14:39:02	16	RELEASE PRESSURE	15:10:44
17	PUMP SUGAR WTR IN PARASITE	15:21:46	18	END JOB	15:24:08

Customer: OXY H&P 353
Well Description: CC 697-05-43
Company Rep: CAL WYLIE

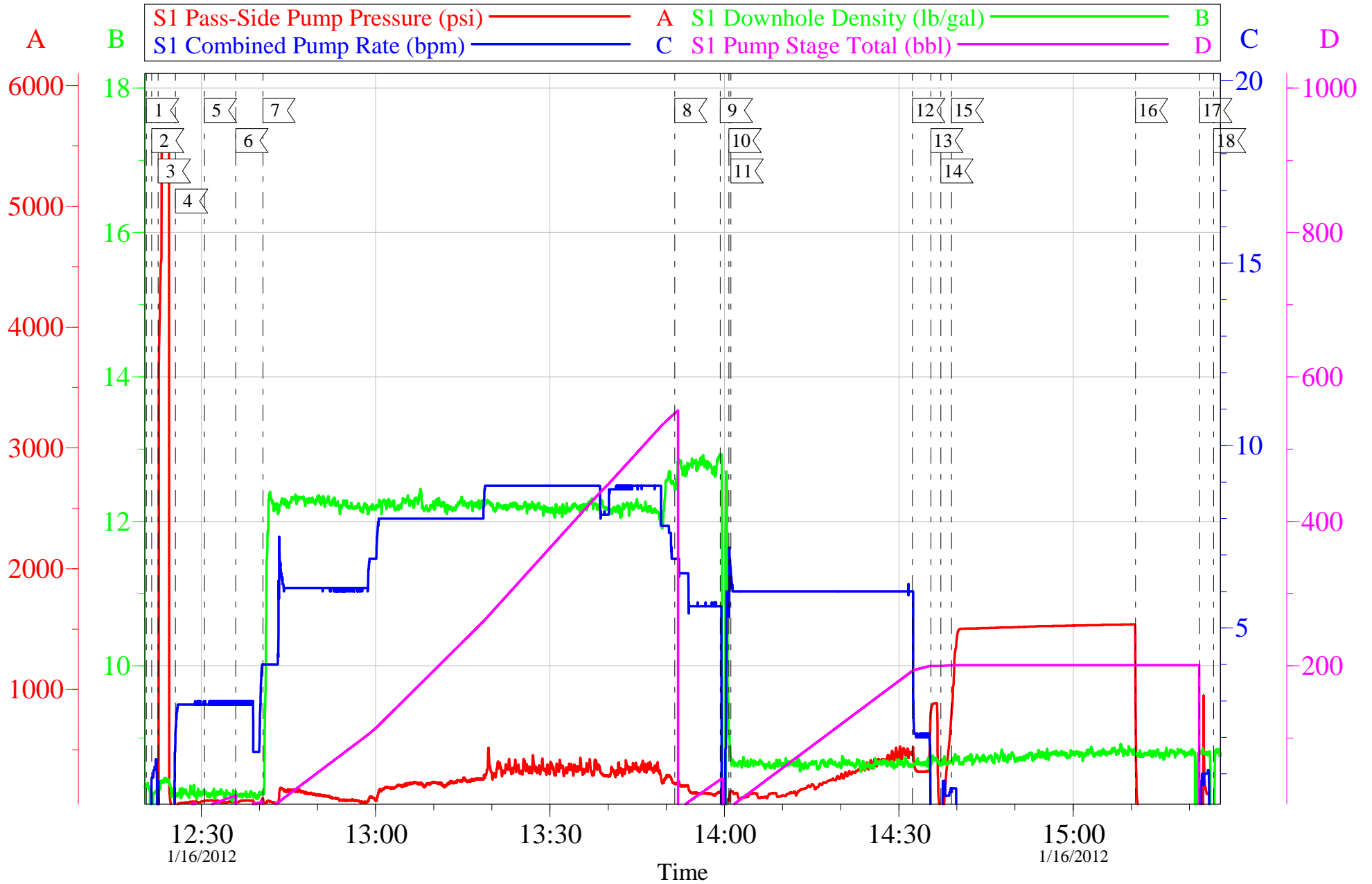
Job Date: 16-Jan-2012
Job Type: SURFACE
Cement Supervisor: MIKE MAGERS

Sales Order #: 9107180
ADC Used: YES
Elite # 8 STEVE BORSZICH

OptiCem v6.4.10
16-Jan-12 16:12

OXY H&P 353 CC 697-05-43

9.625 OFFLINE SURFACE

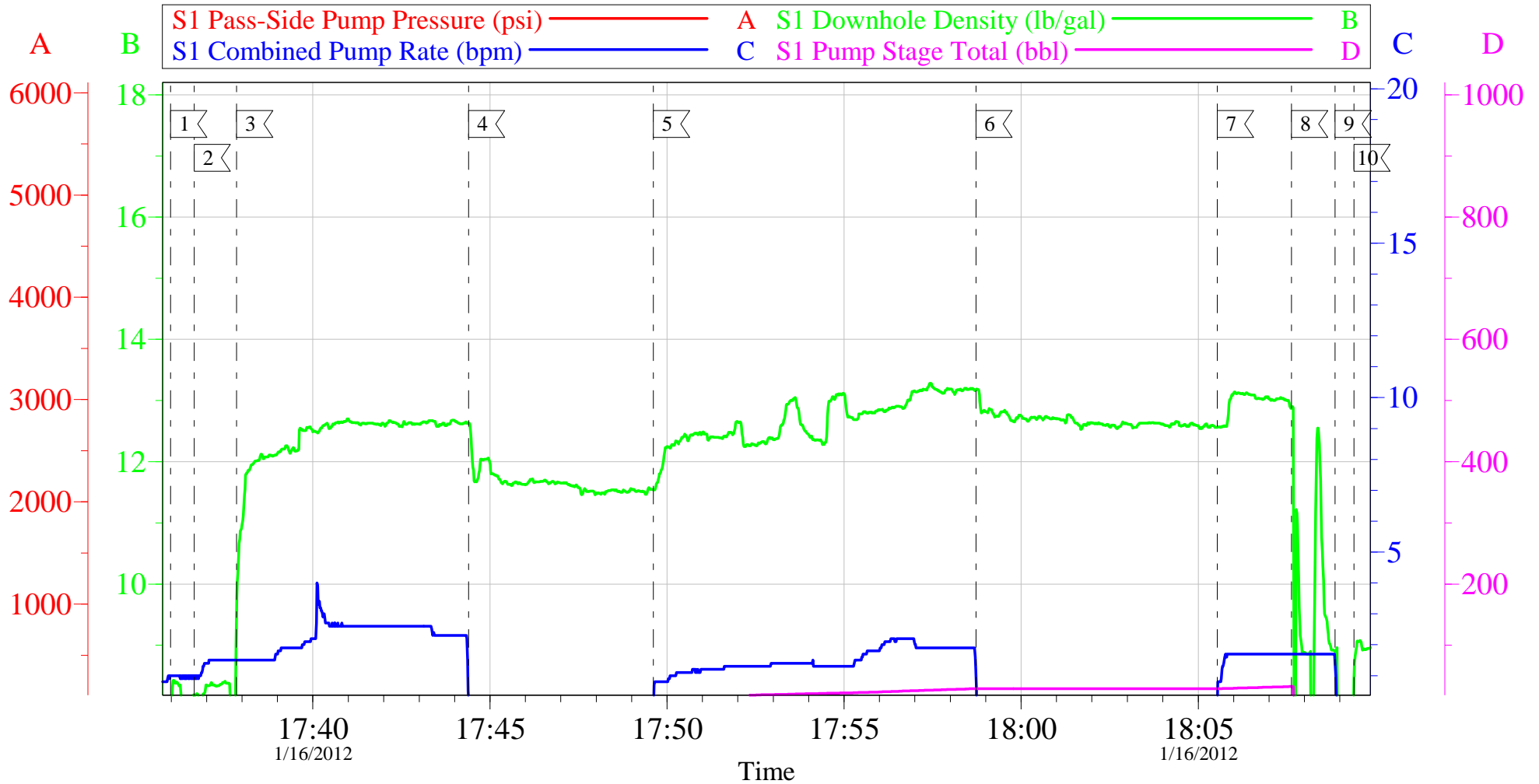


Customer:	OXY H&P 353	Job Date:	16-Jan-2012	Sales Order #:	9107180
Well Description:	CC 697-05-43	Job Type:	SURFACE	ADC Used:	YES
Company Rep:	CAL WYLIE	Cement Supervisor:	MIKE MAGERS	Elite # 8	STEVE BORSZICH

OptiCem v6.4.10
16-Jan-12 16:13

OXY H&P 353 CC-697-05-43

TOPOUT 1



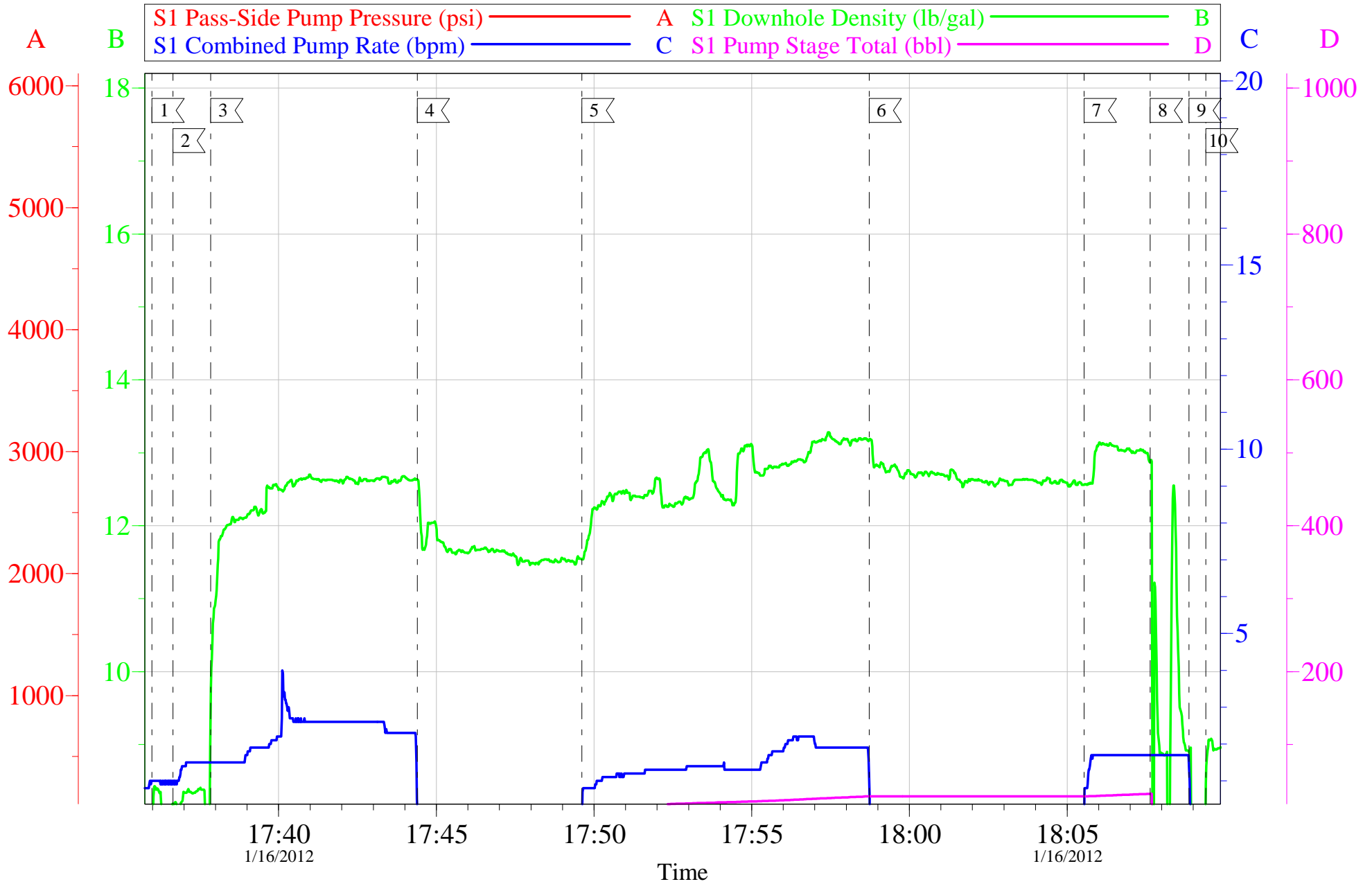
Local Event Log					
1	START JOB	17:35:59	2	PUMP SPACER	17:36:39
3	PUMP TOPOUT	17:37:51	4	SHUT DOWN	17:44:24
5	PUMP TOPOUT	17:49:37	6	SHUT DOWN	17:58:43
7	PUMP TOPOUT	18:05:33	8	CLEAN LINE	18:07:38
9	SHUT DOWN	18:08:52	10	END JOB	18:09:24

Customer:	OXY H&P 353	Job Date:	16-Jan-2012	Sales Order #:	9107180
Well Description:	CC 697-05-43	Job Type:	TOPOUT 1	ADC Used:	YES
Company Rep:	CAL WYLIE	Cement Supervisor:	MIKE MAGERS	Elite # 8	STEVE BORSZICH

OptiCem v6.4.10
16-Jan-12 18:27

OXY H&P 353 CC-697-05-43

TOPOUT 1



Customer: OXY H&P 353
Well Description: CC 697-05-43
Company Rep: CAL WYLIE

Job Date: 16-Jan-2012
Job Type: TOPOUT 1
Cement Supervisor: MIKE MAGERS

Sales Order #: 9107180
ADC Used: YES
Elite # 8 STEVE BORSZICH

OptiCem v6.4.10
16-Jan-12 18:28

HALLIBURTON

Water Analysis Report

Company: OXY H&P 353

MIKE MAGERS

Attention: J.Trout/ C.Martinez

Lease CC

Well # 697-05-43

Date: 1/16/2012

Date Rec: 1/16/2012

S.O.# 9107180

Job Type: SURFACE

Specific Gravity	<i>MAX</i>	1
pH	<i>8</i>	7
Potassium (K)	<i>5000</i>	250 Mg / L
Calcium (Ca)	<i>500</i>	120 Mg / L
Iron (FE2)	<i>300</i>	0 Mg / L
Chlorides (Cl)	<i>3000</i>	0 Mg / L
Sulfates (SO ₄)	<i>1500</i>	under 200 Mg / L
Chlorine (Cl ₂)		0 Mg / L
Temp	<i>40-80</i>	60
Total Dissolved Solids		130 Mg / L

Respectfully: MIKE MAGERS

Title: CEMENTING SUPERVISOR

Location: Grand Junction, CO

NOTICE:

This report is limited to the described sample tested. Any person using or relying on this report agrees that Halliburton shall not be liable for any loss or damage whether due to act or omission resulting from such report or

Sales Order #: 9107180	Line Item: 10	Survey Conducted Date: 1/16/2012
Customer: OXY GRAND JUNCTION EBUSINESS		Job Type (BOM): CMT SURFACE CASING BOM
Customer Representative: CAL WYLIE		API / UWI: (leave blank if unknown) 05-045-20371
Well Name: CC		Well Number: 697-05-43
Well Type: Development Well	Well Country: United States of America	
H2S Present:	Well State: Colorado	Well County: Garfield

Dear Customer,

We hope that you were satisfied with the service quality of this job performed by Halliburton. It is the aim of our management and service personnel to deliver equipment and service of a standard unmatched in the service sector of the energy industry.

Please take the time to let us know if our performance met with your satisfaction. Please be as critical as possible to ensure we constantly improve our service. Your comments are of great value to us and are intended for the exclusive use of Halliburton.

CUSTOMER SATISFACTION SURVEY

CATEGORY	CUSTOMER SATISFACTION RESPONSE	
Survey Conducted Date	The date the survey was conducted	1/16/2012
Survey Interviewer	The survey interviewer is the person who initiated the survey.	MICHAEL MAGERS (HX13672)
Customer Participation	Did the customer participate in this survey? (Y/N)	Yes
Customer Representative	Enter the Customer representative name	CAL WYLIE
HSE	Was our HSE performance satisfactory? Circle Y or N	Yes
Equipment	Were you satisfied with our Equipment? Circle Y or N	Yes
Personnel	Were you satisfied with our people? Circle Y or N	Yes
Customer Comment	Customer's Comment	GREAT JOB THANKS

CUSTOMER SIGNATURE

Sales Order #: 9107180	Line Item: 10	Survey Conducted Date: 1/16/2012
Customer: OXY GRAND JUNCTION EBUSINESS		Job Type (BOM): CMT SURFACE CASING BOM
Customer Representative: CAL WYLIE		API / UWI: (leave blank if unknown) 05-045-20371
Well Name: CC		Well Number: 697-05-43
Well Type: Development Well	Well Country: United States of America	
H2S Present:	Well State: Colorado	Well County: Garfield

KEY PERFORMANCE INDICATORS

General	
Survey Conducted Date The date the survey was conducted	1/16/2012

Cementing KPI Survey	
Type of Job Select the type of job. (Cementing or Non-Cementing)	0
Select the Maximum Deviation range for this Job What is the highest deviation for the job you just completed? This may not be the maximum well deviation.	Vertical
Total Operating Time (hours) Total Operating Hours Including Rig-up, Pumping, Rig-down. Enter in decimal format.	6
HSE Incident, Accident, Injury HSE Incident, Accident, Injury. This should be recordable incidents only.	No
Was the job purpose achieved? Was the job delivered correctly as per customer agreed design?	Yes
Operating Hours (Pumping Hours) Total number of hours pumping fluid on this job. Enter in decimal format.	5
Customer Non-Productive Rig Time (hrs) Lost time due to Halliburton in the start, execution, or completion of an ordered service or product, or delays in a follow-on service. Enter in decimal format. 0 if none.	0
Type of Rig Classification Job Was Performed Type Of Rig (classification) Job Was Performed On	Drilling Rig (Portable)
Number Of JSAs Performed Number Of Jsas Performed	4
Number of Unplanned Shutdowns Unplanned shutdown is when injection stops for any period of time.	0
Was this a Primary Cement Job (Yes / No)	Yes

Sales Order #: 9107180	Line Item: 10	Survey Conducted Date: 1/16/2012
Customer: OXY GRAND JUNCTION EBUSINESS		Job Type (BOM): CMT SURFACE CASING BOM
Customer Representative: CAL WYLIE		API / UWI: (leave blank if unknown) 05-045-20371
Well Name: CC		Well Number: 697-05-43
Well Type: Development Well	Well Country: United States of America	
H2S Present:	Well State: Colorado	Well County: Garfield

Primary Cement Job= Casing job, Liner job, or Tie-back job.	
Did We Run Wiper Plugs? Did We Run Top And Bottom Casing Wiper Plugs?	Top
Mixing Density of Job Stayed in Designed Density Range (0-100%) Density Range defined as +/- .20 ppg. Calculation: Total BBLs cement mixed at designed density divided by total BBLs of cement multiplied by 100	95
Was Automated Density Control Used? Was Automated Density Control (ADC) Used ?	Yes
Pump Rate (percent) of Job Stayed At Designed Pump Rate Pump Rate range defined as +/- 1bbl/min. Calculation: Total BBLs of fluid pumped at the designed rate divided by Total BBLs of fluid pumped, multiplied by 100	95
Nbr of Remedial Sqz Jobs Rqd - Competition Number Of Remedial Squeeze Jobs Required After Primary Job Performed By Competition	0
Nbr of Remedial Plug Jobs Rqd - HES Number Of Remedial Plug Jobs Needed After Primary Plug Pumped By HES	0
Nbr of Remedial Sqz Jobs Rqd - HES Number Of Remedial Squeeze Jobs Required After Primary Job Performed By HES	0