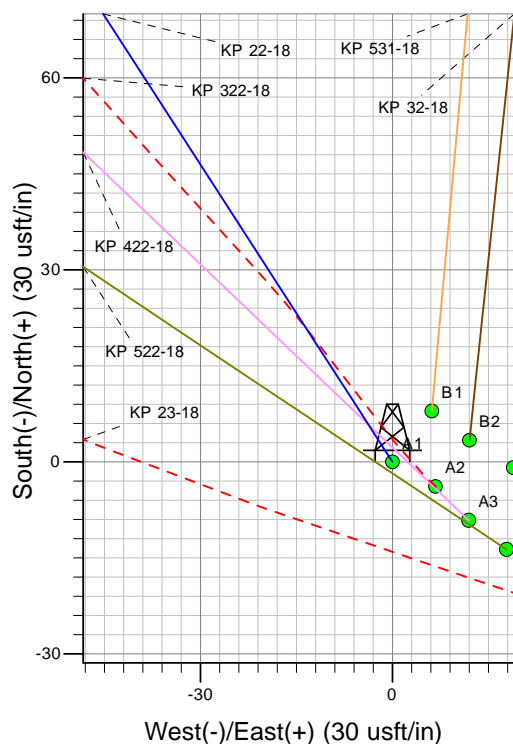
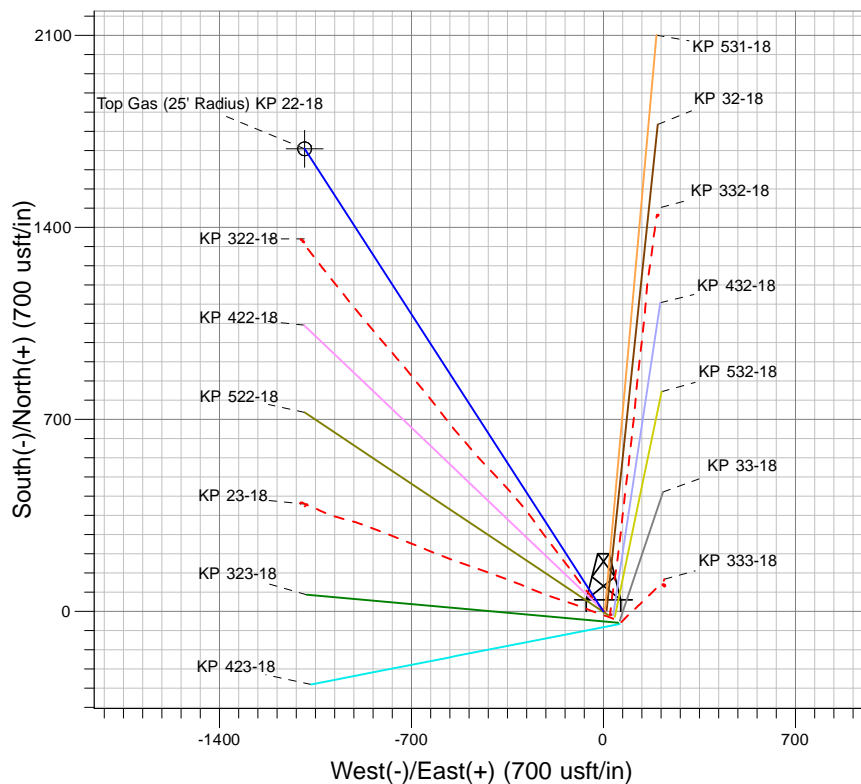
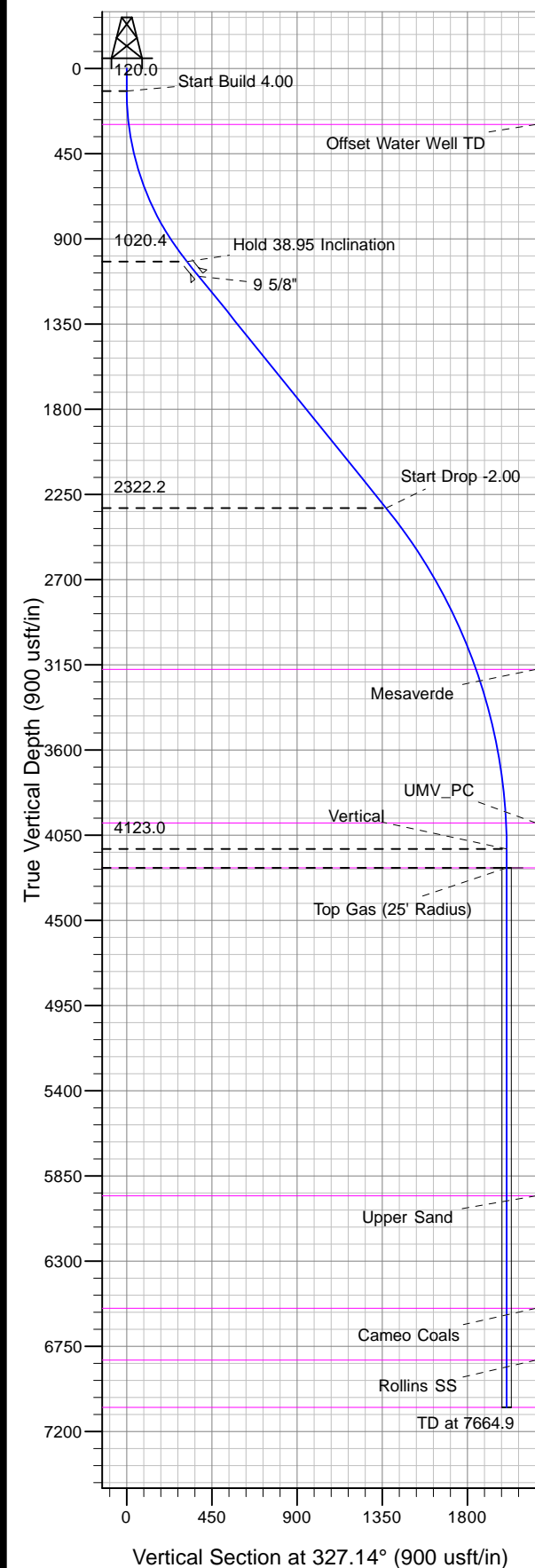




Well Name: KP 22-18
Surface Location: KP 33-18 Pad
North American Datum 1983 , US State Plane 1983, Colorado Central Zone
Ground Elevation: 5850.0
+N/-S +E/-W Northing Easting Latitude Longitude
0.0 0.0 1623292.00 2408920.10 39° 31' 33.602 N 107° 35' 44.225 W A1
KELLY BUSHING @ 5876.0usft (Nabors 574 (26' RKB) kjs)



Project: Sec. 18-T6S-R91W
Site: KP 33-18 Pad
Well: KP 22-18
Plan #3 16Dec11 kjs

↑ T M
Azimuths to True North
Magnetic North: 10.32°
Magnetic Field
Strength: 52477.9snT
Dip Angle: 65.89°
Date: 3/2/2010
Model: IGRF2005-10

ANNOTATIONS

MD	Inc	Azi	TVD	+N/-S	+E/-W	Vsect	Departure	Annotation
120.0	0.00	0.00	120.0	0.0	0.0	0.0	0.0	Start Build 4.00
1093.7	38.95	327.14	1020.4	267.5	-172.7	318.4	318.4	Hold 38.95 Inclination
2767.5	38.95	327.14	2322.2	1151.3	-743.6	1370.6	1370.6	Start Drop -2.00
4714.9	0.00	0.00	4123.0	1686.2	-1089.1	2007.3	2007.3	Vertical
4814.9	0.00	0.00	4223.0	1686.2	-1089.1	2007.3	2007.3	Top Gas
7664.9	0.00	0.00	7073.0	1686.2	-1089.1	2007.3	2007.3	TD at 7664.9