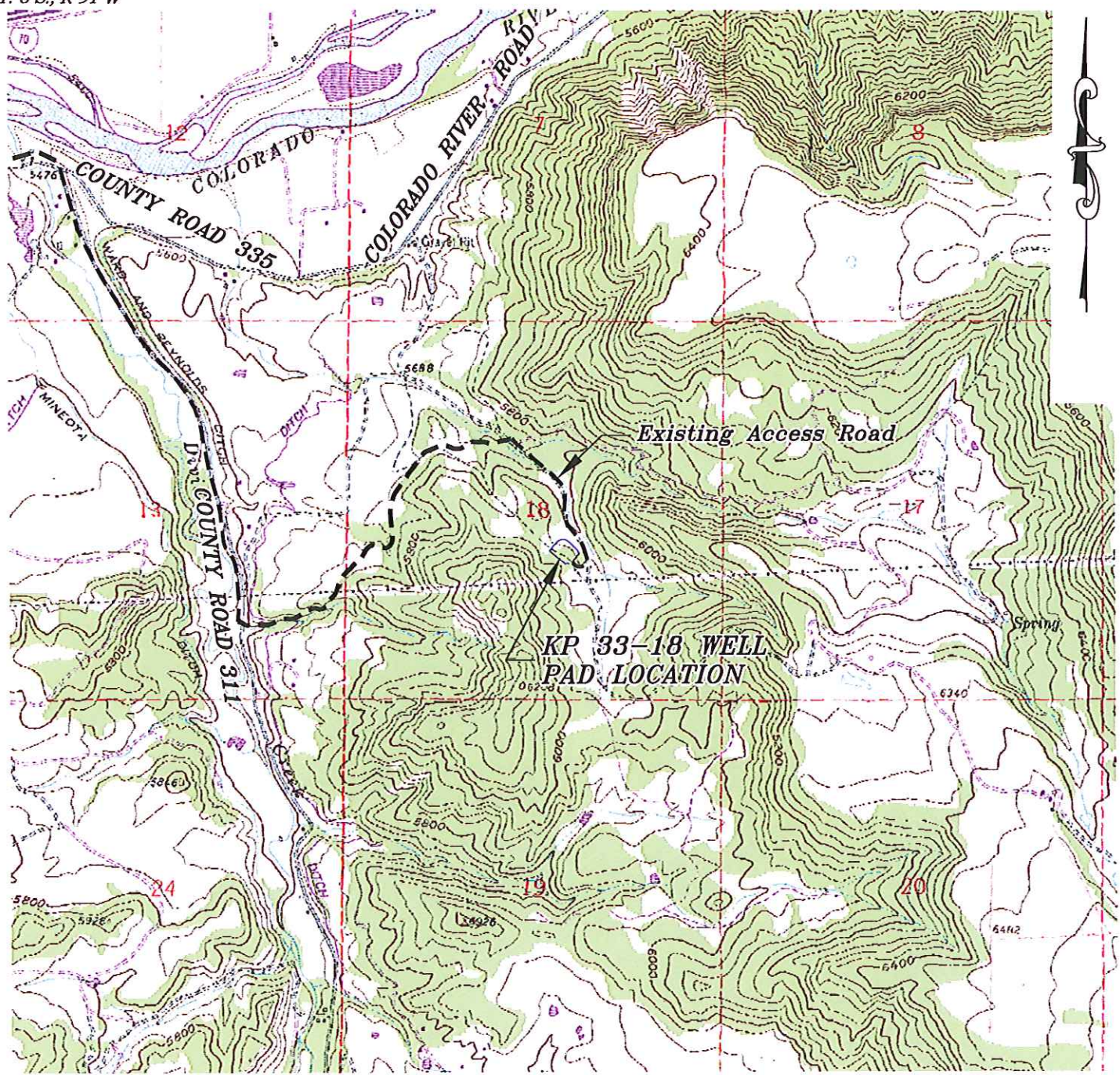


Section 18
T. 6 S., R. 91 W



ACCESS DESCRIPTION:

FROM THE INTERSECTION OF COLORADO INTERSTATE 70 OVERPASS (Exit 97) AND RIVER FRONTAGE ROAD SOUTH OF SILT, COLORADO, PROCEED EAST ± 0.4 MILES ALONG RIVER FRONTAGE ROAD TO THE INTERSECTION WITH COUNTY ROAD 311 (DIVIDE CREEK ROAD), PROCEED RIGHT IN A SOUTHERLY TO EASTERLY DIRECTION ± 2.0 MILES TO A 'Y' INTERSECTION WITH COUNTY ROAD 335, PROCEED RIGHT IN AN SOUTHERLY DIRECTION ALONG COUNTY ROAD 311 ± 1.3 MILES TO THE INTERSECTION WITH A DIRT GRAVEL ROAD, PROCEED LEFT IN A EASTERLY TO NORTHEASTERLY DIRECTION ± 1.0 MILES TO THE INTERSECTION WITH A DIRT GRAVEL ROAD, PROCEED PROCEED RIGHT IN AN SOUTHERLY DIRECTION ± 0.4 MILES TO THE EXISTING KP 33-18 DRILL PAD LOCATION, AS SHOWN HEREON.

136 East Third Street
Rifle, Colorado 81650
Ph. (970) 625-2720
Fax (970) 625-2773



BOOKCLIFF
Survey Services, Inc.

SCALE: 1" = 2000'
DATE: 1/13/12
PLAT: 5 of 7
PROJECT: Williams Kokopelli
DFT: cws

Construction Plan Prepared for:
WPXENERGY WPX Energy Rocky Mountain, LLC

KP 33-18 Drill Pad - Plat 5
ACCESS ROAD & TOPO MAP