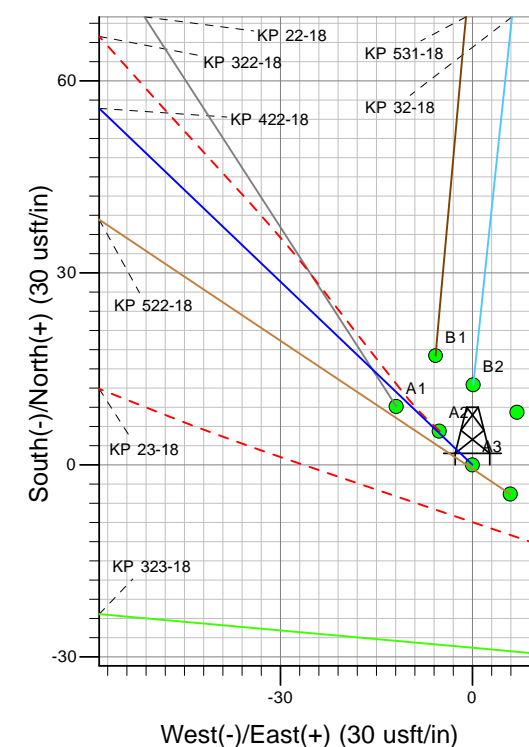
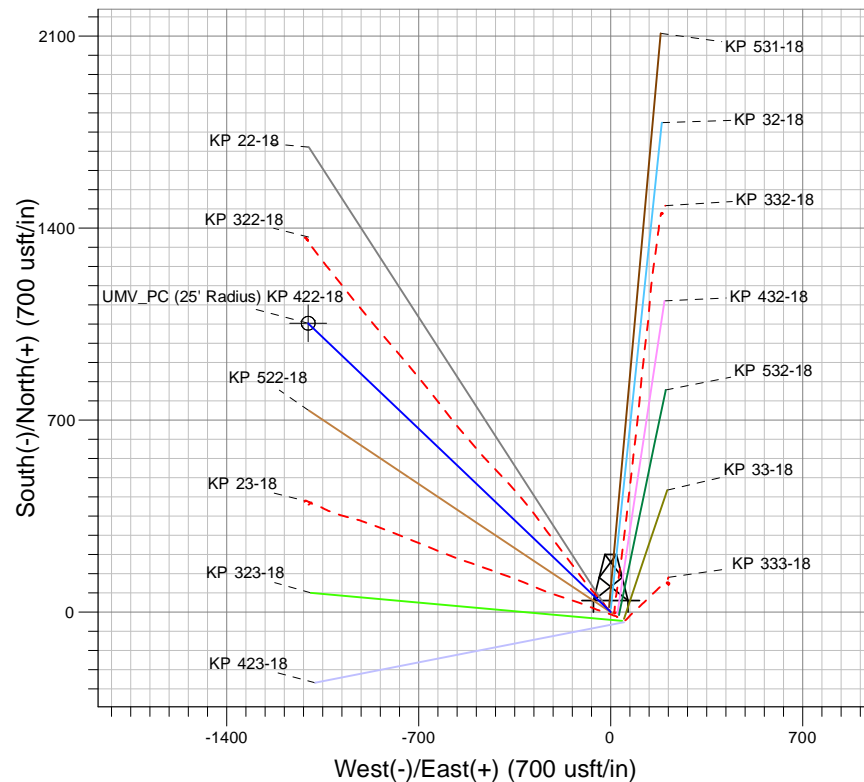
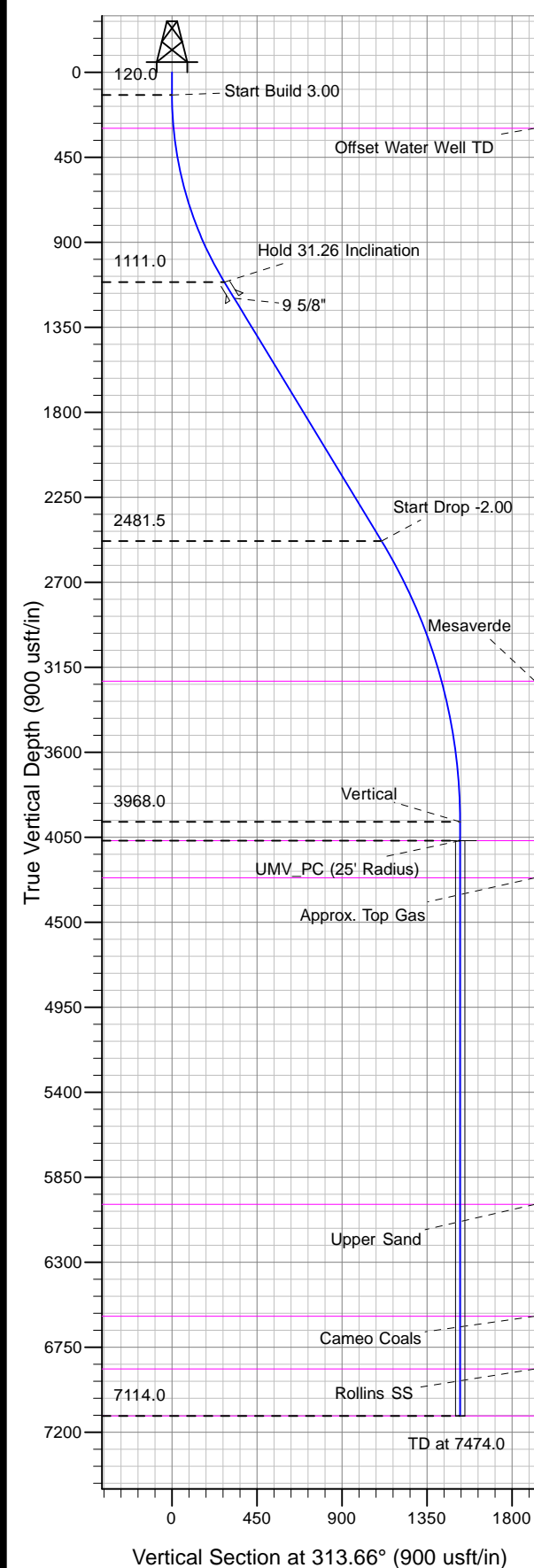




Well Name: KP 422-18
Surface Location: KP 33-18 Pad
North American Datum 1983 , US State Plane 1983, Colorado Central Zone
Ground Elevation: 5850.0
+N/-S +E/-W Northing Easting Latitude Longitude
0.0 0.0 1623282.60 2408931.80 39° 31' 33.512 N 107° 35' 44.073 W A3
KELLY BUSHING @ 5876.0usft (Nabors 574 (26' RKB) kjs)



Project: Sec. 18-T6S-R91W
Site: KP 33-18 Pad
Well: KP 422-18
Plan #2 16Dec11 kjs

↑ T
M
Azimuths to True North
Magnetic North: 10.32°
Magnetic Field
Strength: 52477.9snT
Dip Angle: 65.89°
Date: 3/2/2010
Model: IGRF2005-10

ANNOTATIONS

| MD | Inc | Azi | TVD | +N/-S | +E/-W | Vsect | Departure | Annotation |
|--------|-------|--------|--------|--------|---------|--------|-----------|------------------------|
| 120.0 | 0.00 | 0.00 | 120.0 | 0.0 | 0.0 | 0.0 | 0.0 | Start Build 3.00 |
| 1161.9 | 31.26 | 313.66 | 1111.0 | 191.4 | -200.6 | 277.2 | 277.2 | Hold 31.26 Inclination |
| 2765.2 | 31.26 | 313.66 | 2481.5 | 765.7 | -802.4 | 1109.1 | 1109.1 | Start Drop -2.00 |
| 4328.0 | 0.00 | 0.00 | 3968.0 | 1052.8 | -1103.2 | 1524.9 | 1524.9 | Vertical |
| 4428.0 | 0.00 | 0.00 | 4068.0 | 1052.8 | -1103.2 | 1524.9 | 1524.9 | UMV_PC |
| 7474.0 | 0.00 | 0.00 | 7114.0 | 1052.8 | -1103.2 | 1524.9 | 1524.9 | TD at 7474.0 |