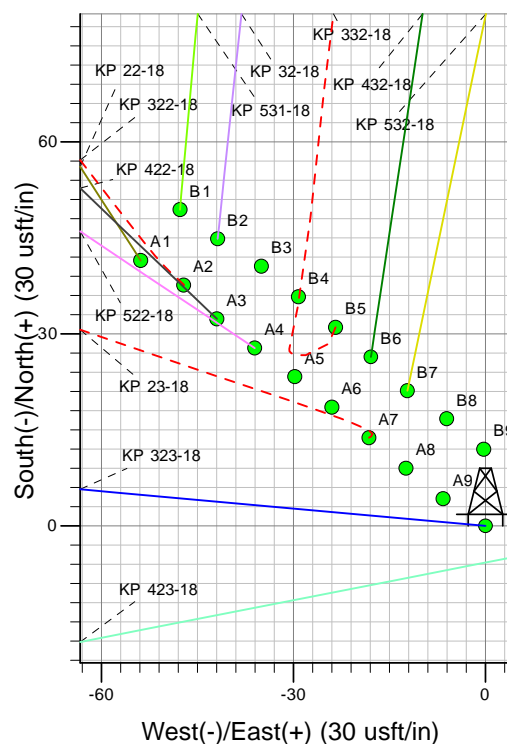
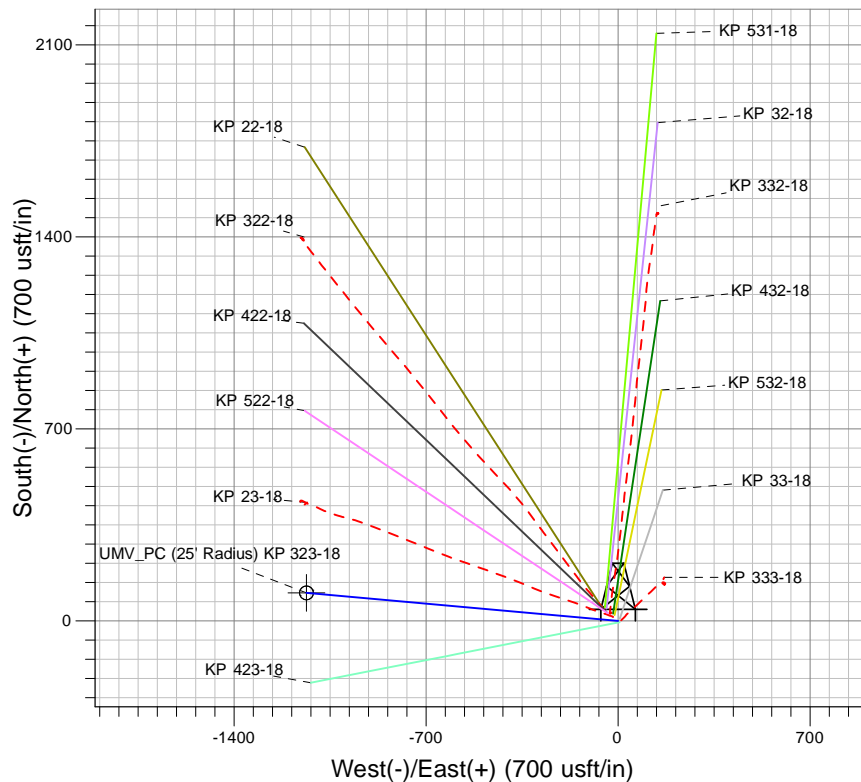
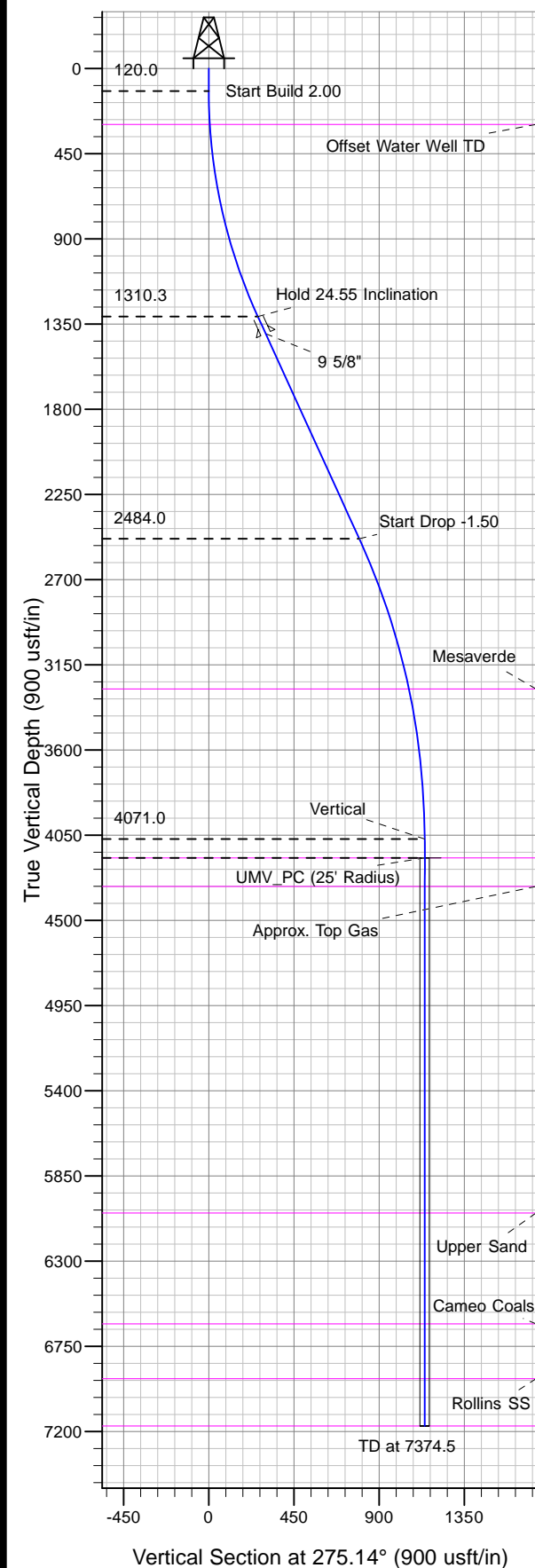




Well Name: KP 323-18
Surface Location: KP 33-18 Pad
North American Datum 1983 , US State Plane 1983, Colorado Central Zone
Ground Elevation: 5850.0
+N/-S +E/-W Northing Easting Latitude Longitude
0.0 0.0 1623249.30 2408973.00 39° 31' 33.192 N 107° 35' 43.537 W A10
KELLY BUSHING @ 5876.0usft (Nabors 574 (26' RBK) kjs)



Project: Sec. 18-T6S-R91W
Site: KP 33-18 Pad
Well: KP 323-18
Plan #2 16Dec11 kjs

↑ T M
↑ A
Azimuths to True North
Magnetic North: 10.32°
Magnetic Field
Strength: 52477.9snT
Dip Angle: 65.89°
Date: 3/2/2010
Model: IGRF2005-10

ANNOTATIONS

MD	Inc	Azi	TVD	+N/-S	+E/-W	Vsect	Departure	Annotation
120.0	0.00	0.00	120.0	0.0	0.0	0.0	0.0	Start Build 2.00
1347.5	24.55	275.14	1310.3	23.2	-257.9	259.0	259.0	Hold 24.55 Inclination
2637.9	24.55	275.14	2484.0	71.2	-791.9	795.1	795.1	Start Drop -1.50
4274.5	0.00	0.00	4071.0	102.1	-1135.8	1140.4	1140.4	Vertical
4374.5	0.00	0.00	4171.0	102.1	-1135.8	1140.4	1140.4	UMV_PC
7374.5	0.00	0.00	7171.0	102.1	-1135.8	1140.4	1140.4	TD at 7374.5