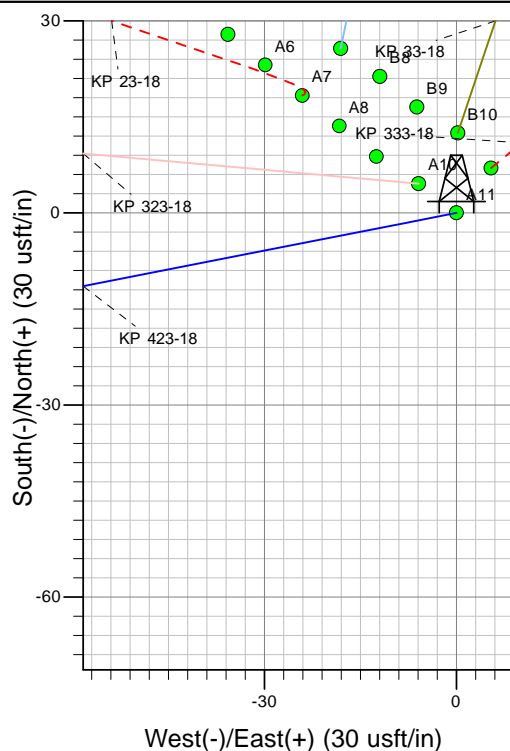
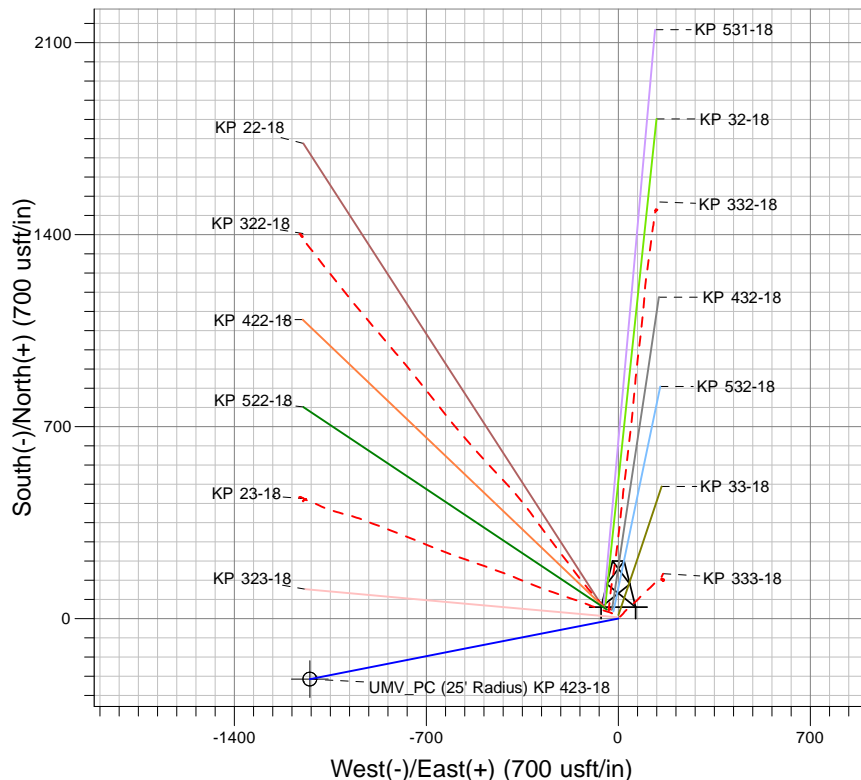
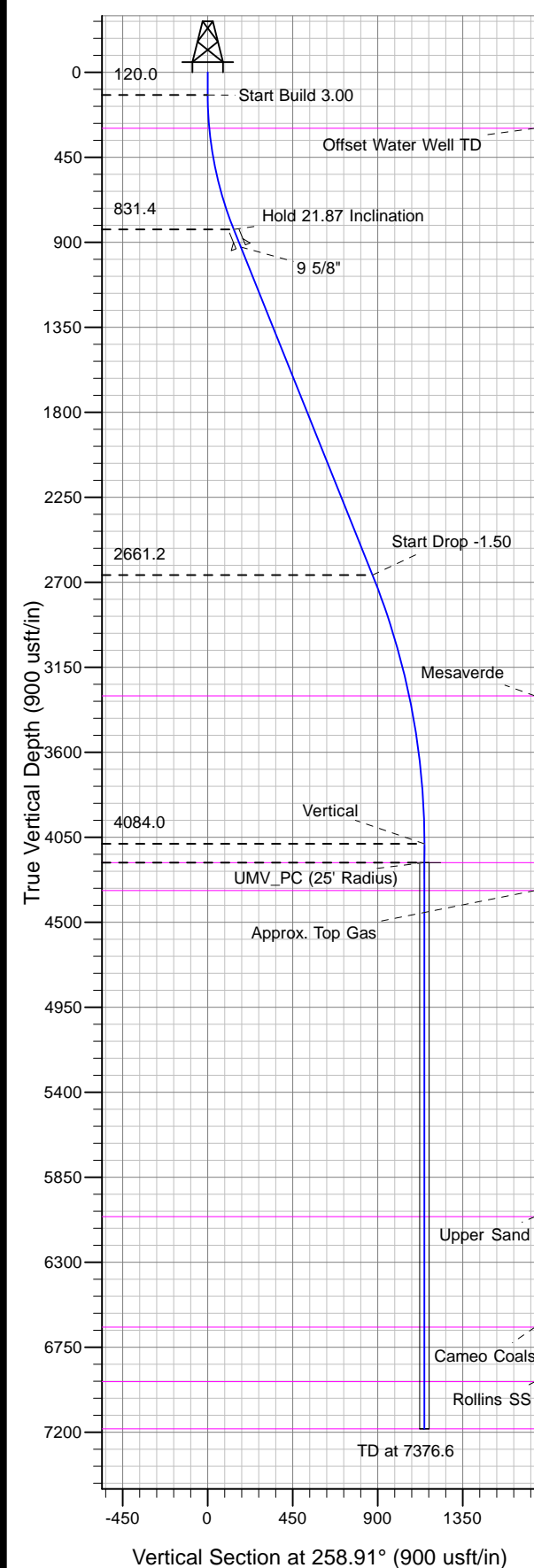




Well Name: KP 423-18
Surface Location: KP 33-18 Pad
North American Datum 1983 , US State Plane 1983, Colorado Central Zone
Ground Elevation: 5850.0

+N/-S +E/-W Northing Easting Latitude Longitude
0.0 0.0 1623244.60 2408978.80 39° 31' 33.147 N 107° 35' 43.462 W A11
KELLY BUSHING @ 5876.0usft (Nabors 574 (26'RKB) kjs)



Project: Sec. 18-T6S-R91W
Site: KP 33-18 Pad
Well: KP 423-18
Plan #2 16Dec11 kjs

T M
Azimuths to True North
Magnetic North: 10.32°
Magnetic Field
Strength: 52477.9snT
Dip Angle: 65.89°
Date: 3/2/2010
Model: IGRF2005-10

ANNOTATIONS

MD	Inc	Azi	TVD	+N/-S	+E/-W	Vsect	Departure	Annotation
120.0	0.00	0.00	120.0	0.0	0.0	0.0	0.0	Start Build 3.00
849.0	21.87	258.91	831.4	-26.4	-134.9	137.4	137.4	Hold 21.87 Inclination
2820.6	21.87	258.91	2661.2	-167.7	-855.6	871.9	871.9	Start Drop -1.50
4278.6	0.00	0.00	4084.0	-220.6	-1125.4	1146.8	1146.8	Vertical
4378.6	0.00	0.00	4184.0	-220.6	-1125.4	1146.8	1146.8	UMV_PC
7376.6	0.00	0.00	7182.0	-220.6	-1125.4	1146.8	1146.8	TD at 7376.6