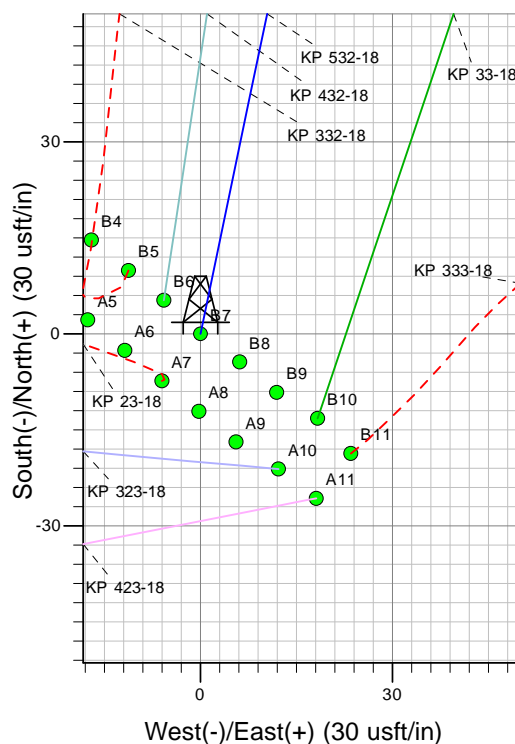
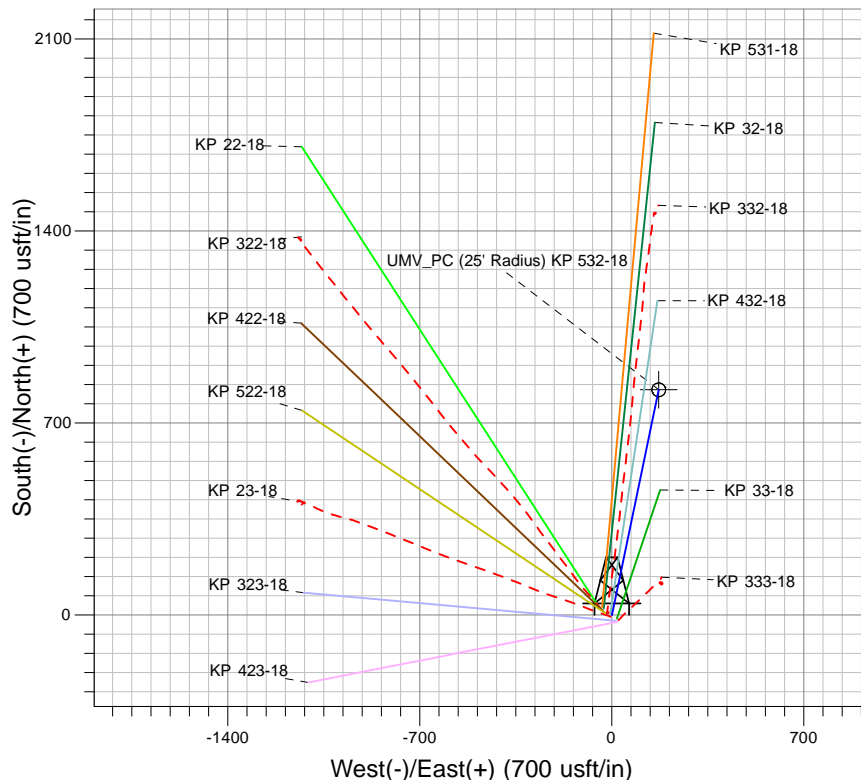
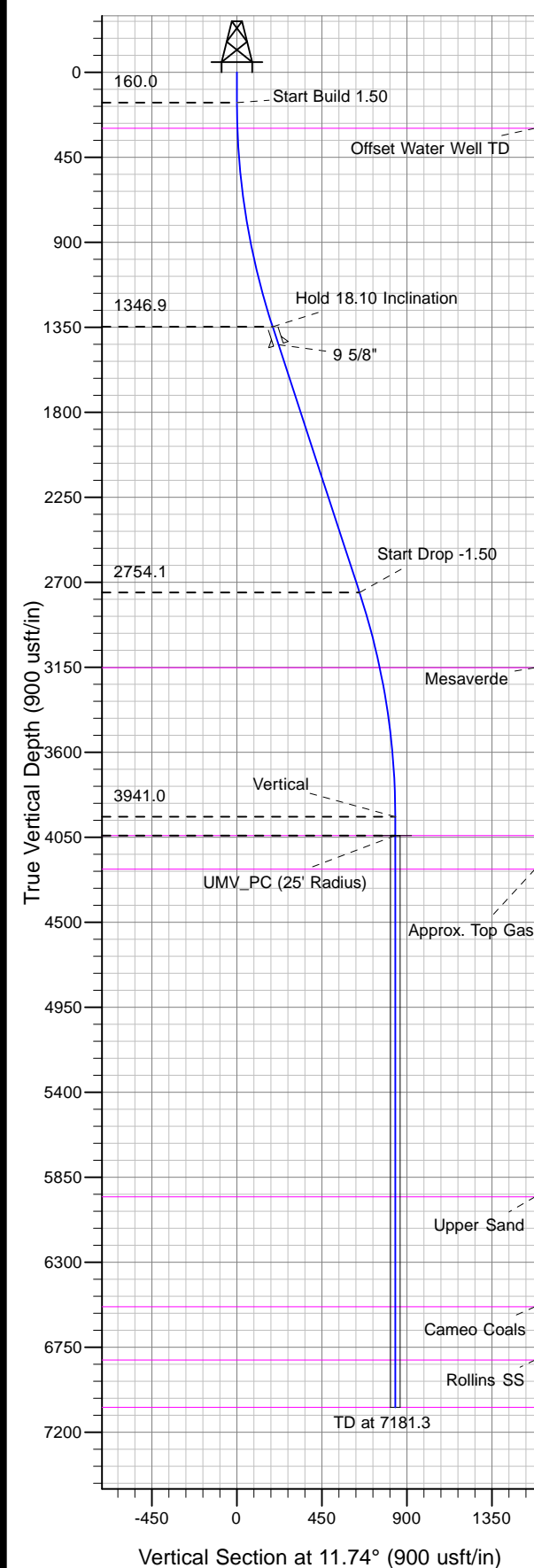




Well Name: KP 532-18
Surface Location: KP 33-18 Pad
North American Datum 1983 , US State Plane 1983, Colorado Central Zone
Ground Elevation: 5850.0
+N/-S 0.0 +E/-W 0.0 Northing 1623270.70 Easting 2408961.30 Latitude 39° 31' 33.401 N Longitude 107° 35' 43.693 W B7
KELLY BUSHING @ 5876.0usft (Nabors 574 (26' RKB) kjs)



Project: Sec. 18-T6S-R91W
Site: KP 33-18 Pad
Well: KP 532-18
Plan #2 16Dec11 kjs

Azimuths to True North
Magnetic North: 10.32°
Magnetic Field
Strength: 52477.9snT
Dip Angle: 65.89°
Date: 3/2/2010
Model: IGRF2005-10

ANNOTATIONS

MD	Inc	Azi	TVD	+N/-S	+E/-W	Vsect	Departure	Annotation
160.0	0.00	0.00	160.0	0.0	0.0	0.0	0.0	Start Build 1.50
1366.9	18.10	11.74	1346.9	185.1	38.5	189.1	189.1	Hold 18.10 Inclination
2847.3	18.10	11.74	2754.1	635.5	132.1	649.1	649.1	Start Drop -1.50
4054.3	0.00	0.00	3941.0	820.7	170.5	838.2	838.2	Vertical
4154.3	0.00	0.00	4041.0	820.7	170.5	838.2	838.2	UMW_PC
7181.3	0.00	0.00	7068.0	820.7	170.5	838.2	838.2	TD at 7181.3