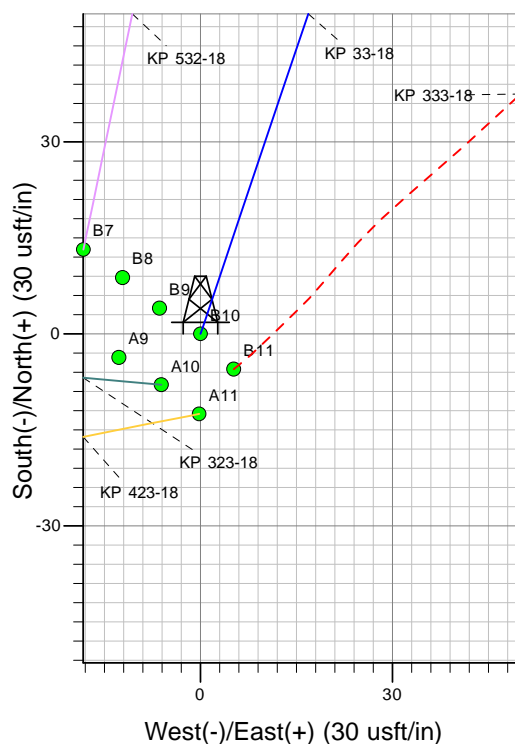
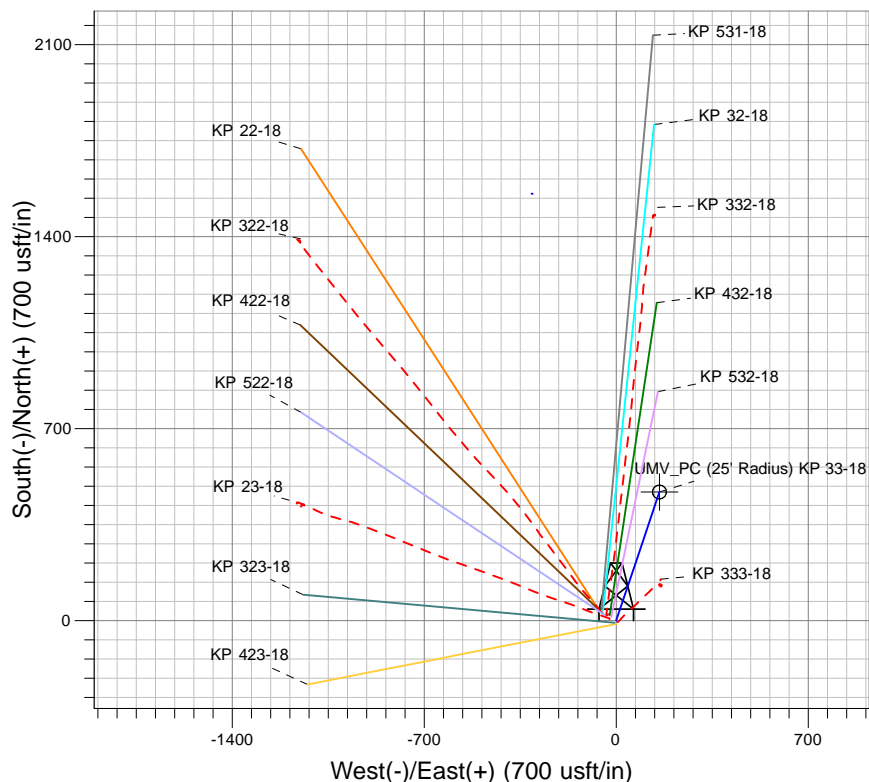
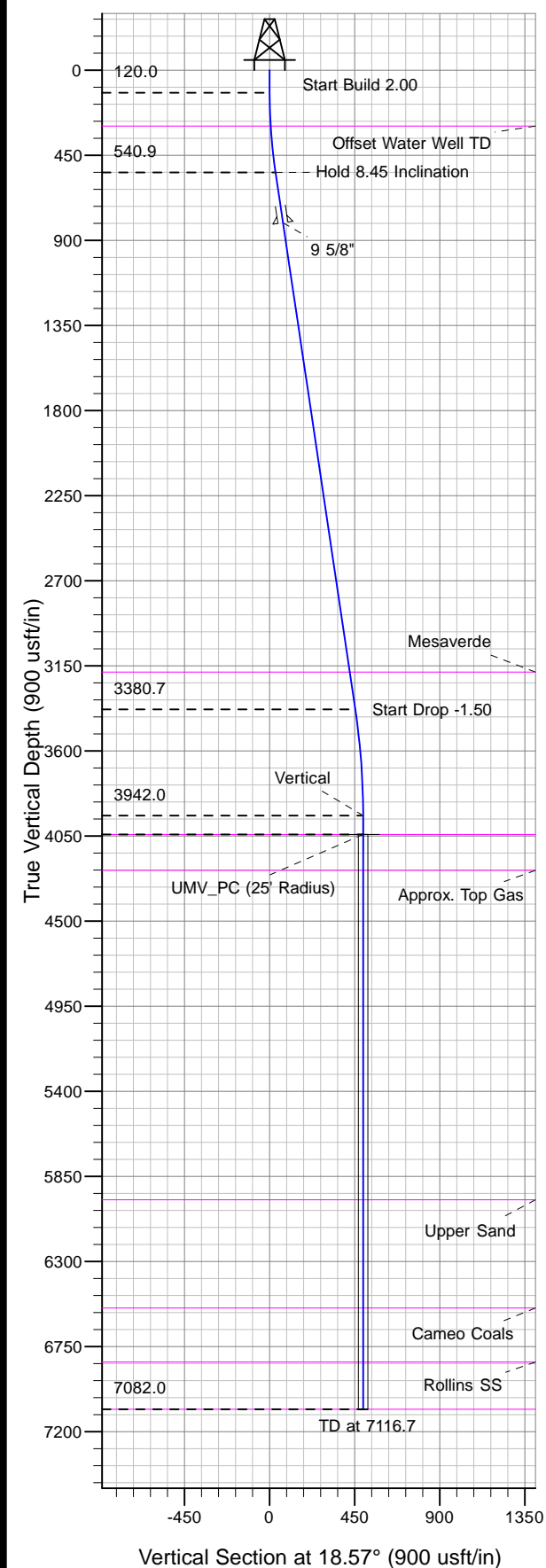




Well Name: KP 33-18
Surface Location: KP 33-18 Pad
North American Datum 1983 , US State Plane 1983, Colorado Central Zone
Ground Elevation: 5850.0
+N/-S +E/-W Northing Easting Latitude Longitude
0.0 0.0 1623257.10 2408979.30 39° 31' 33.270 N 107° 35' 43.459 W B10
KELLY BUSHING @ 5876.0usft (Nabors 574 (26' RKB) kjs)



Project: Sec. 18-T6S-R91W
Site: KP 33-18 Pad
Well: KP 33-18
Plan #2 16Dec11 kjs

Azimuths to True North
Magnetic North: 10.32°
Magnetic Field
Strength: 52477.9snT
Dip Angle: 65.89°
Date: 3/2/2010
Model: IGRF2005-10

ANNOTATIONS

MD	Inc	Azi	TVD	+N/-S	+E/-W	Vsect	Departure	Annotation
120.0	0.00	0.00	120.0	0.0	0.0	0.0	0.0	Start Build 2.00
542.5	8.45	18.57	540.9	29.5	9.9	31.1	31.1	Hold 8.45 Inclination
3413.4	8.45	18.57	3380.7	429.4	144.2	452.9	452.9	Start Drop -1.50
3976.7	0.00	0.00	3942.0	468.7	157.4	494.4	494.4	Vertical
4076.7	0.00	0.00	4042.0	468.7	157.4	494.4	494.4	UMV_PC
7116.7	0.00	0.00	7082.0	468.7	157.4	494.4	494.4	TD at 7116.7