

correctness of any  
fees, or expenses  
also subject to our

[illegible]

Company K. P. KAUFFMAN COMPANY, INC.

WATTENBERG

County	WELD	State	COLORADO
--------	------	-------	----------

Other Services	API #: 05-123-32872-0000	Location:
NONE		

STL. NEED	
SEC 9 TWP 1N RGE 67W	County

Permanent Datum Measured From	GROUND LEVEL	Elevation	K.B. 5046 D.F. 5045
KELLY BUSHING	(16ft)	5030	

Measuring From	KELLY BUSHNIG	G.L. 3000
27-MAY-2011		
DATE		

MD: 6616	
4975	
4050	7A REGISTRATION

3430	
6.250"	

8.34HIGAL		
174DEGF		

2000		
N/A		
N/A		

3011		
BRIGHTON, CO		
SAM HOPPER		

Tubing Record	
From	To
PAUL ANDERSON	KENI GILBERT

[illegible]

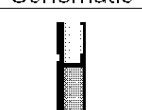
Size	Wt/H	Top	Bottom
9-5/8"	40#	SURFACE	1039

4-12"	11.6#	SURFACE	3060
		SURFACE	6816
<<< For			

[illegible]

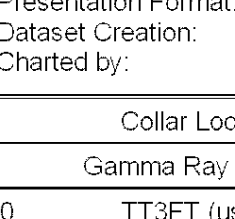
RAN AT -0- PSI SURFACE PRESSURE.  
RUN FROM AS DEEP AS POSSIBLE IN CURVE TO 200' ABOVE CEMENT TOP.

## FOR

Offset (ft)	Schematic	Description	Len (ft)	OD (in)
19.56		CCL-275tekco 2.75 TEK CCL Earth Plug	1.96	2.75

[illegible]

**JW WIRELINE COMPANY**



0	Amplified Amplitude (mV)	30	200	V
0	Amplitude (mV)	100		

