
CHEVRON - MID-CONTINENT EBIZ

**SKR 698-09-AV-04
SKINNER RIDGE
Garfield County , Colorado**

Cement Production Casing
22-May-2009

Job Site Documents

The Road to Excellence Starts with Safety

Sold To #: 338668	Ship To #: 2713342	Quote #:	Sales Order #: 6682350
Customer: CHEVRON - MID-CONTINENT EBIZ		Customer Rep: TATUM, ELMER	
Well Name: SKR		Well #: 698-09-AV-04	API/UWI #: 05-045-15865
Field: SKINNER RIDGE	City (SAP): PARACHUTE	County/Parish: Garfield	State: Colorado
Contractor: H&P 318	Rig/Platform Name/Num: H&P 318		
Job Purpose: Cement Production Casing			
Well Type: Development Well		Job Type: Cement Production Casing	
Sales Person: DUNNING, DUSTIN		Srv Supervisor: WYLEY, KEVIN	MBU ID Emp #: 339437

Job Personnel

HES Emp Name	Exp Hrs	Emp #	HES Emp Name	Exp Hrs	Emp #	HES Emp Name	Exp Hrs	Emp #
ANDERSON, ADAM	4	456683	BROWN, TRAVIS A	4	396848	JENSEN, SHANE Lynn	4	441759
SAUTER, MARK A	4	410526	SULLIVAN, DARYL K	4	450196	WYLEY, KEVIN Todd	4	339437

Equipment

HES Unit #	Distance-1 way	HES Unit #	Distance-1 way	HES Unit #	Distance-1 way	HES Unit #	Distance-1 way
10567589C	120 mile	10829461	120 mile	10867304	120 mile	10893932	120 mile
10985907	120 mile	10995027	120 mile	10998054	120 mile		

Job Hours

Date	On Location Hours	Operating Hours	Date	On Location Hours	Operating Hours	Date	On Location Hours	Operating Hours
5/22/09	4	2						
TOTAL								

Total is the sum of each column separately

Job				Job Times			
Formation Name	Formation Depth (MD)	Top	Bottom	Date	Time	Time Zone	
Form Type			BHST	Called Out	22 - May - 2009	13:30	MST
Job depth MD	6161. ft		Job Depth TVD	On Location	22 - May - 2009	18:00	MST
Water Depth			Wk Ht Above Floor	Job Started	22 - May - 2009	19:47	MST
Perforation Depth (MD)	From	To	4. ft	Job Completed	22 - May - 2009	21:09	MST
				Departed Loc	22 - May - 2009	22:30	MST

Well Data

Description	New / Used	Max pressure psig	Size in	ID in	Weight lbm/ft	Thread	Grade	Top MD ft	Bottom MD ft	Top TVD ft	Bottom TVD ft
7 7/8 Open Hole Section				7.875					6188		
4 1/2 Production Casing	Unknown		4.5	4.	11.6				6161		
8 5/8 Surface Casing	Unknown		8.625	8.097	24.				1015		

Sales/Rental/3rd Party (HES)

Description	Qty	Qty uom	Depth	Supplier
PLUG,CMTG, TOP, 4 1/2, HWE, 3.65 MIN/4.14 MA	1	EA		
PORT. DAS W/CEMWIN:ACQUIRE W/HES, ZI	1	JOB		
ADC (AUTO DENSITY CTRL) SYS, /JOB,ZI	1	JOB		

Tools and Accessories

Type	Size	Qty	Make	Depth	Type	Size	Qty	Make	Depth	Type	Size	Qty	Make
Guide Shoe					Packer					Top Plug	4 1/2	1	
Float Shoe					Bridge Plug					Bottom Plug			
Float Collar					Retainer					SSR plug set			
Insert Float										Plug Container	4 1/2	1	
Stage Tool										Centralizers			

Miscellaneous Materials

Gelling Agt	Conc	Surfactant	Conc	Acid Type	Qty	Conc	%
Treatment Fld	Conc	Inhibitor	Conc	Sand Type	Size		

Fluid Data									
Stage/Plug #: 1									
Fluid #	Stage Type	Fluid Name	Qty	Qty uom	Mixing Density lbm/gal	Yield ft ³ /sk	Mix Fluid Gal/sk	Rate bbl/min	Total Mix Fluid Gal/sk
1	Dyed Spacer		40	bbl	8.33	.0	.0	6	
2	Lead Cement	VARICEM (TM) CEMENT (452009)	310	sacks	12.8	1.61	7.31	6	7.7
		7.704 Gal FRESH WATER							
3	Tail Cement	VARICEM (TM) CEMENT (452009)	650	sacks	13.2	1.47	6.32	6	6.72
		6.719 Gal FRESH WATER							
4	KCL Displacement		94	bbl	.	.0	.0	8	
Calculated Values		Pressures		Volumes					
Displacement	94.8	Shut In: Instant		Lost Returns	NO	Cement Slurry	259	Pad	
To Of Cement		5 Min		Cement Returns	0	Actual Displacement	94	Treatment	
Gradient		15 Min		Spacers	40	Load and Breakdown		Total Job	
Circulating RIG Mixing 6 Displacement 8 Avg. Job 7 Cement Left In Pipe Amount 47.56 ft Reason Shoe Joint Frac Ring # 1 @ ID Frac ring # 2 @ ID Frac Ring # 3 @ ID Frac Ring # 4 @ ID									
The Information Stated Herein Is Correct				Customer Representative Signature					

The Road to Excellence Starts with Safety

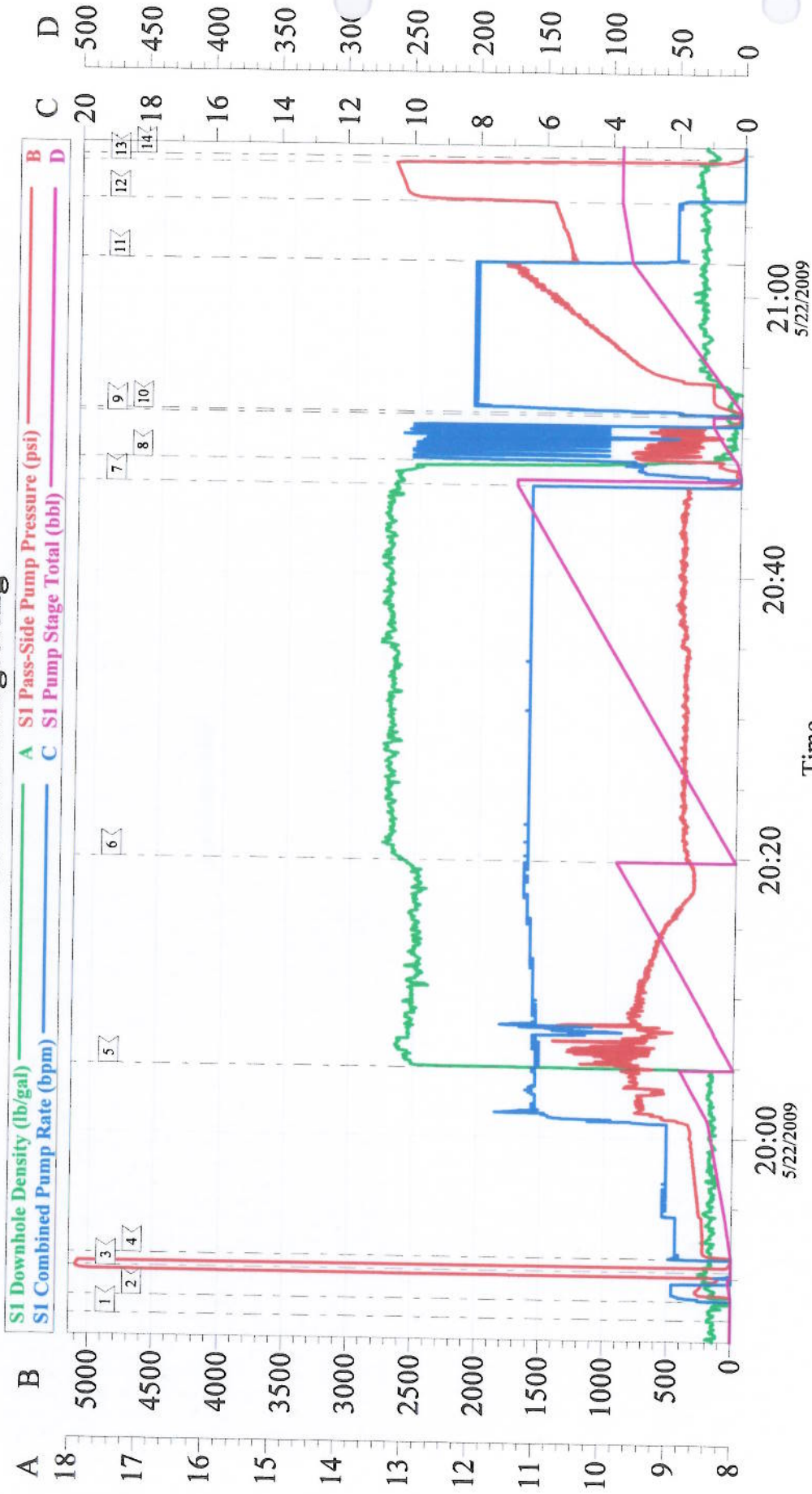
Sold To #: 338668	Ship To #: 2713342	Quote #:	Sales Order #: 6682350
Customer: CHEVRON - MID-CONTINENT EBIZ		Customer Rep: TATUM, ELMER	
Well Name: SKR	Well #: 698-09-AV-04	API/UWI #: 05-045-15865	
Field: SKINNER RIDGE	City (SAP): PARACHUTE	County/Parish: Garfield	State: Colorado
Legal Description:			
Lat: N 0 deg. OR N 0 deg. 0 min. 0 secs.		Long: E 0 deg. OR E 0 deg. 0 min. 0 secs.	
Contractor: H&P 318	Rig/Platform Name/Num: H&P 318		
Job Purpose: Cement Production Casing		Ticket Amount:	
Well Type: Development Well	Job Type: Cement Production Casing		
Sales Person: DUNNING, DUSTIN	Srvc Supervisor: WYLEY, KEVIN	MBU ID Emp #: 339437	

Activity Description	Date/Time	Cht #	Rate bbl/min	Volume bbl		Pressure psig		Comments
				Stage	Total	Tubing	Casing	
Call Out	05/22/2009 13:30							
Depart Yard Safety Meeting	05/22/2009 15:30							SAFTEY MEETING INVOLVING THE ENTIRE CMT CREW
Arrive At Loc	05/22/2009 18:00							WATER TEST PH-8.3, K-0, CA-120, FE-0, CL-0, S04-70, TEMP-63, TDS-270
Assessment Of Location Safety Meeting	05/22/2009 18:10							ASSESSMENT OF LOCATION INVOLVING THE ENTIRE CMT CREW
Rig-Up Equipment	05/22/2009 18:20							STILL RUNNING CSG, MUD REPORT PV-17, YP-19, TEMP-115, VISC-46, 42 CENTRALIZERS RUN ON CSG
Circulate Well	05/22/2009 18:21							360 BBLS CIRCULATED AT ABOUT 8 BPM
Pre-Job Safety Meeting	05/22/2009 19:00							SAFETY MEETING INVOLVING EVERYONE ON LOCATION
Start Job	05/22/2009 19:47							TD 6188', TP 6161', SJ 47.56', 7 7/8" OH, 4 1/2" 11.6# N-80 CSG, 10.3 MW, SURFACE TO 1015' 8 5/8" 24#
Other	05/22/2009 19:48		2	2			286.0	PRIME LINES WITH FRESH WATER
Test Lines	05/22/2009 19:50						5097.0	PSI TEST GOOD

Cementing Job Log

Activity Description	Date/Time	Cht #	Rate bbl/min	Volume bbl		Pressure psig		Comments
				Stage	Total	Tubing	Casing	
Pump Spacer	05/22/2009 19:51		6	40			660.0	FRESH WATER, THE LAST 20 BBLS W/ POL-E-FLAKE AND DYE
Pump Lead Cement	05/22/2009 20:04		6	88.9			840.0	310 SKS, 12.8 PPG, 1.61 FT3/SK, 7.31 GAL/SK
Pump Tail Cement	05/22/2009 20:19		6	170.2			440.0	650 SKS, 13.2 PPG, 1.47 FT3/SK, 6.32 GAL/SK
Shutdown	05/22/2009 20:46							DROP TOP PLUG
Clean Lines	05/22/2009 20:48							CLEAN PUMPS AND LINES WITH FRESH WATER
Drop Top Plug	05/22/2009 20:51							PLUG LEFT THE PLUG CONTAINER
Pump Displacement	05/22/2009 20:51		8	94.8			1750.0	1 1/2 BAG OF KCL PER 10 BBLS OF DISPLACEMENT
Slow Rate	05/22/2009 21:02		2	84			1480.0	SLOW RATE THE LAST 10 BBLS OF DISPLACEMENT TO LAND THE PLUG
Bump Plug	05/22/2009 21:06		2	94			2550.0	PLUG LANDED
Check Floats	05/22/2009 21:09							FLOATS HELD, NO PIPE MOVEMENT DURING JOB
End Job	05/22/2009 21:09							GOOD CIRCULATION THROUGHOUT THE ENTIRE CMT JOB, NO CEMENT TO SURFACE, WE GOT ABOUT 30 BBLS OF SPACER BACK
Pre-Rig Down Safety Meeting	05/22/2009 21:20							SAFETY MEETING INVOLVING THE ENTIRE CMT CREW
Rig-Down Equipment	05/22/2009 21:30							
Safety Meeting - Departing Location	05/22/2009 22:30							SAFETY MEETING INVOLVING THE ENTIRE CMT CREW
Comment	05/22/2009 22:31							THANK YOU FOR USING HALLIBURTON, KEVIN WYLEY AND CREW

4.5 Inch Longstring



Customer: CHEVRON - MID-CONTINENT EBIZ
Well Description: Skinner Ridge 698-09-AV-04
Company Rep: Elmer Tatum

Job Date: 22-May-2009
Job Type: Production
Cement Supervisor: Kevin Wyley

Sales Order #: 6682550
ADC Used: Yes
Elite #/Operator: 3, Travis Brown