
CHEVRON - MID-CONTINENT EBIZ

**SKR 698-09-AV-04
PICEANCE
Garfield County , Colorado**

**Cement Surface Casing
08-May-2009**

Job Site Documents

The Road to Excellence Starts with Safety

Sold To #: 338668	Ship To #: 2713342	Quote #:	Sales Order #: 6621781
Customer: CHEVRON - MID-CONTINENT EBIZ	Customer Rep: DOHERTY, ED		
Well Name: SKR	Well #: 698-09-AV-04	API/UWI #: 05-045-15865	
Field: PICEANCE	City (SAP): PARACHUTE	County/Parish: Garfield	State: Colorado
Lat: N 39.551 deg. OR N 39 deg. 33 min. 3.524 secs.		Long: W 108.33 deg. OR W -109 deg. 40 min. 12.785 secs.	
Contractor: H&P 318	Rig/Platform Name/Num: H & P 318		
Job Purpose: Cement Surface Casing			
Well Type: Development Well	Job Type: Cement Surface Casing		
Sales Person: DUNNING, DUSTIN	Srvc Supervisor: NELSON, RYAN	MBU ID Emp #: 386514	

Job Personnel

HES Emp Name	Exp Hrs	Emp #	HES Emp Name	Exp Hrs	Emp #	HES Emp Name	Exp Hrs	Emp #
BRADY, JERED Austin	4.5	213392	BROWN, TRAVIS A	4.5	396848	CHASTAIN, DERICK Allan	4.5	455848
NELSON, RYAN Cody	4.5	386514	YOUNG, JEREMY R	4.5	418013			

Equipment

HES Unit #	Distance-1 way	HES Unit #	Distance-1 way	HES Unit #	Distance-1 way	HES Unit #	Distance-1 way
10567589C	120 mile	10867094	120 mile	10897925	120 mile	10951245	120 mile
10995027	120 mile						

Job Hours

Date	On Location Hours	Operating Hours	Date	On Location Hours	Operating Hours	Date	On Location Hours	Operating Hours
5-8-09	4.5	1.5						

TOTAL

Total is the sum of each column separately

Job

Formation Name	Job	Job Times	Date	Time	Time Zone
Formation Depth (MD)	Top Bottom	Called Out	08 - May - 2009	15:00	MST
Form Type	BHST	On Location	08 - May - 2009	18:30	MST
Job depth MD	1035. ft	Job Started	08 - May - 2009	20:35	MST
Water Depth	Wk Ht Above Floor	Job Completed	08 - May - 2009	21:30	MST
Perforation Depth (MD)	From To	Departed Loc	08 - May - 2009	23:00	MST

Well Data

Description	New / Used	Max pressure psig	Size in	ID in	Weight lbm/ft	Thread	Grade	Top MD ft	Bottom MD ft	Top TVD ft	Bottom TVD ft
Open Hole				12.25				0	1035.		
Casing			8.625	8.097	24.		K-55	0	1019.		

Sales/Rental/3rd Party (HES)

Description	Qty	Qty uom	Depth	Supplier
PLUG,CMTG, TOP, 8 5/8, H&P, 7.20 MIN/8.09 MA	1	EA		
PORT. DAS W/CEMWIN;ACQUIRE W/HES, ZI	1	JOB		
ADC (AUTO DENSITY CTRL) SYS, /JOB,ZI	1	JOB		

Tools and Accessories

Type	Size	Qty	Make	Depth	Type	Size	Qty	Make	Depth	Type	Size	Qty	Make
Guide Shoe					Packer					Top Plug	8 5/8	1	HES
Float Shoe					Bridge Plug					Bottom Plug			
Float Collar					Retainer					SSR plug set			
Insert Float										Plug Container	8 5/8	1	HES
Stage Tool										Centralizers			

Miscellaneous Materials

Gelling Agt	Conc	Surfactant	Conc	Acid Type	Qty	Conc %
Treatment Fld	Conc	Inhibitor	Conc	Sand Type	Size	Qty

Fluid Data									
Stage/Plug #: 1									
Fluid #	Stage Type	Fluid Name	Qty	Qty uom	Mixing Density lbm/gal	Yield ft ³ /sk	Mix Fluid Gal/sk	Rate bbl/min	Total Mix Fluid Gal/sk
1	DYE SPACER		30.00	bbl	8.33	.0	.0	.0	
2	Lead Cement	VERSACEM (TM) SYSTEM (452010)	140.0	sacks	12.3	2.38	13.75		
3	Tail Cement	VERSACEM (TM) SYSTEM (452010)	150.0	sacks	12.8	2.11	11.75		
4	DISPLACEMENT		62.10	bbl	8.33	.0	.0	.0	
Calculated Values		Pressures		Volumes					
Displacement	62.1	Shut In: Instant		Lost Returns	NO	Cement Slurry	115.7	Pad	
Top Of Cement	0	5 Min		Cement Returns	25	Actual Displacement	62.1	Treatment	
Frac Gradient		15 Min		Spacers		Load and Breakdown		Total Job	
Rates									
Circulating		Mixing	7	Displacement	7	Avg. Job	7		
Cement Left In Pipe	Amount	42 ft	Reason	Shoe Joint					
Frac Ring # 1 @	ID	Frac ring # 2 @	ID	Frac Ring # 3 @	ID	Frac Ring # 4 @	ID		
The Information Stated Herein Is Correct				Customer Representative Signature					

The Road to Excellence Starts with Safety

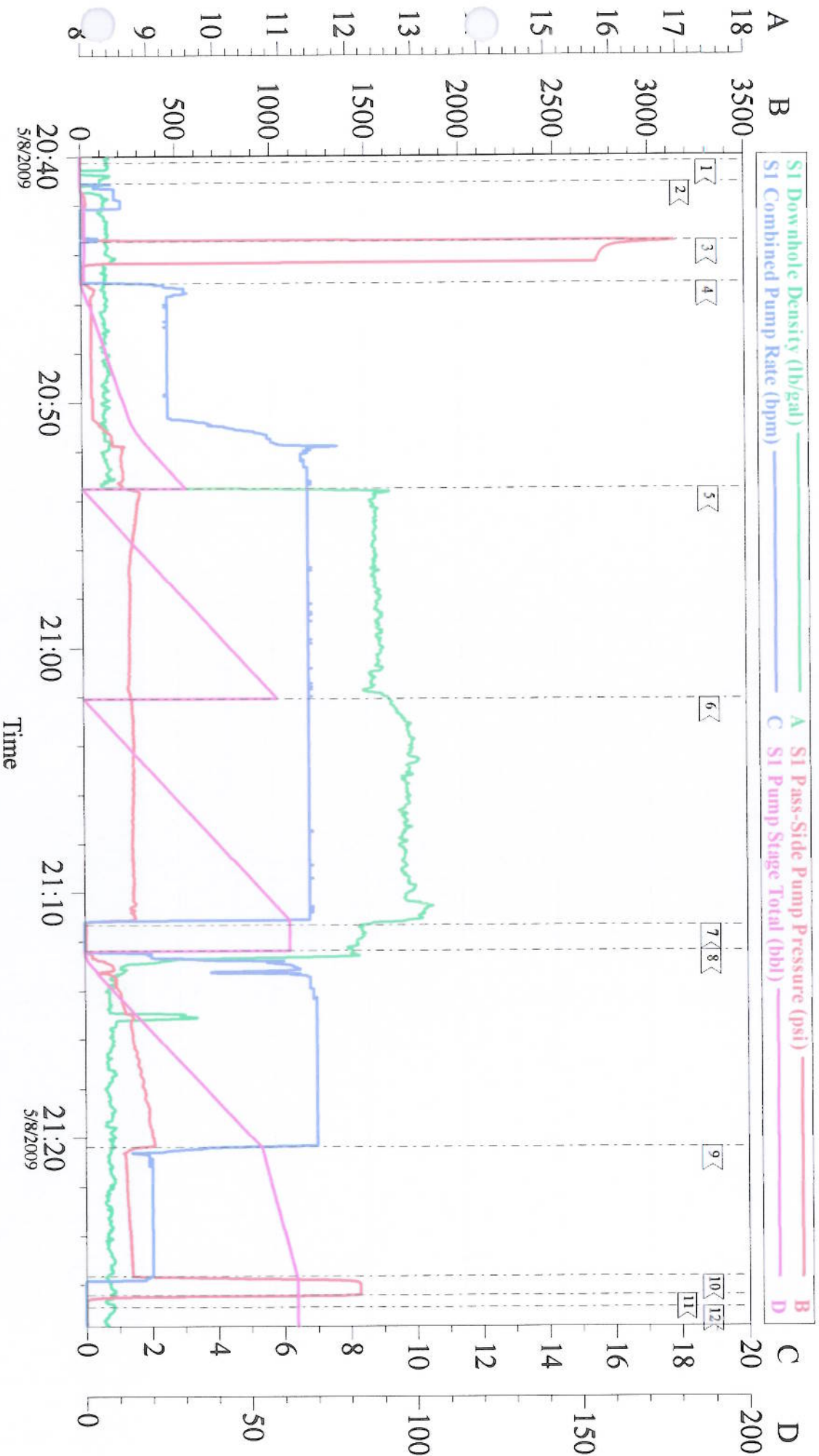
Sold To #: 338668	Ship To #: 2713342	Quote #:	Sales Order #: 6621781
Customer: CHEVRON - MID-CONTINENT EBIZ	Customer Rep: DOHERTY, ED		
Well Name: SKR	Well #: 698-09-AV-04	API/UWI #: 05-045-15865	
Field: PICEANCE	City (SAP): PARACHUTE	County/Parish: Garfield	State: Colorado
Legal Description:			
Lat: N 39.551 deg. OR N 39 deg. 33 min. 3.524 secs.		Long: W 108.33 deg. OR W -109 deg. 40 min. 12.785 secs.	
Contractor: H&P 318	Rig/Platform Name/Num: H &P 318		
Job Purpose: Cement Surface Casing	Ticket Amount:		
Well Type: Development Well	Job Type: Cement Surface Casing		
Sales Person: DUNNING, DUSTIN	Srv Supervisor: NELSON, RYAN	MBU ID Emp #: 386514	

Activity Description	Date/Time	Cht #	Rate bbl/min	Volume bbl		Pressure psig		Comments
				Stage	Total	Tubing	Casing	
Call Out	05/08/2009 15:00							Mark Sullivan was the safety observer
Arrive At Loc	05/08/2009 18:30							Rig running casing
Assessment Of Location Safety Meeting	05/08/2009 18:35							
Pre-Rig Up Safety Meeting	05/08/2009 18:40							
Rig-Up Equipment	05/08/2009 18:45							
Pre-Job Safety Meeting	05/08/2009 20:00							
Start Job	05/08/2009 20:39							TD- 1035' TP-1019' SJ-42' CASING 8 5/8" 24# J-55 HOLE 12 1/4" MUD 9.1
Other	05/08/2009 20:40			1				Fill lines
Test Lines	05/08/2009 20:42						3000.0	
Pump Spacer 1	05/08/2009 20:44		7	30			290.0	Fresh water with Poly-Flake and Red Dye
Pump Lead Cement	05/08/2009 20:53		7	59.3			245.0	140 Sks 12.3 ppg 2.38 yield 13.75 gal/sk
Pump Tail Cement	05/08/2009 21:01		7	56.4			250.0	150 Sks 12.8 ppg 2.11 yield 11.75 gal/sk
Shutdown	05/08/2009 21:10							
Drop Top Plug	05/08/2009 21:11							
Pump Displacement	05/08/2009 21:12		7	62.1			360.0	Fresh Water
Cement Returns to Surface	05/08/2009 21:18							Well circulated 25 bbls of cement to surface
Slow Rate	05/08/2009 21:20		2	50			245.0	

Cementing Job Log

Activity Description	Date/Time	Cht #	Rate bbl/min	Volume bbl		Pressure psig		Comments
				Stage	Total	Tubing	Casing	
Bump Plug	05/08/2009 21:25		2	62.1			1427.0	
Check Floats	05/08/2009 21:27							Floats held
End Job	05/08/2009 21:30							Well was circulated prior to the job. Good returns throughout the job. Pipe was static throughout the job. Thank you for using Halliburton-Ryan Nelson & Crew

8 5/8 Surface



Customer: Chevron
Well Description: SKR 698-09-AV-04
Company Rep: Jonathan Lindsey

Job Date: 08-May-2009
Job Type: Surface
Cement Supervisor: Ryan Nelson

Sales Order #: 6621781
ADC Used: Yes
Elite #/Operator: 3, Travis Brown