

---

# **CHEVRON - MID-CONTINENT EBIZ**

---

**SKR 698-09-AV-02  
SKINNER RIDGE  
Garfield County , Colorado**

**Cement Surface Casing**  
**15-May-2009**

**Job Site Documents**

## The Road to Excellence Starts with Safety

Sold To #: 338668	Ship To #: 2713340	Quote #:	Sales Order #: 6667274
Customer: CHEVRON - MID-CONTINENT EBIZ		Customer Rep: Doherty, Ed	
Well Name: SKR	Well #: 698-09-AV-02	API/UWI #: 05-045-17298	
Field: SKINNER RIDGE	City (SAP): PARACHUTE	County/Parish: Garfield	State: Colorado
Lat: N 39.551 deg. OR N 39 deg. 33 min. 3.391 secs.		Long: W 108.33 deg. OR W -109 deg. 40 min. 12.756 secs.	
Contractor: H&P 318	Rig/Platform Name/Num: H&P 318		
Job Purpose: Cement Surface Casing			
Well Type: Development Well		Job Type: Cement Surface Casing	
Sales Person: HARTLEY, RICHARD	Srv Supervisor: CALDWELL, JEFFREY	MBU ID Emp #: 369111	

### Job Personnel

HES Emp Name	Exp Hrs	Emp #	HES Emp Name	Exp Hrs	Emp #	HES Emp Name	Exp Hrs	Emp #
CALDWELL, JEFFREY S	3	369111	CARTER, ERIC Earl	3	345598	GALLEGOS, JASON Michael	3	386647
ROCKERT, CHRISTOPHER Michael	3	332914	TRIPLETT, MICHEAL Anthony	3	447908			

### Equipment

HES Unit #	Distance-1 way	HES Unit #	Distance-1 way	HES Unit #	Distance-1 way	HES Unit #	Distance-1 way
10296152C	60 mile	10897797	60 mile	10951248	60 mile		

### Job Hours

Date	On Location Hours	Operating Hours	Date	On Location Hours	Operating Hours	Date	On Location Hours	Operating Hours
05/15/09	3	1						
TOTAL			Total is the sum of each column separately					

### Job

Formation Name	Formation Depth (MD)	Top	Bottom	Form Type	Job depth MD	Job Depth TVD	Water Depth	Perforation Depth (MD)	From	To
				BHST	1010. ft	1010. ft				
							Wk Ht Above Floor			
						5. ft				

### Job Times

Date	Time	Time Zone
15 - May - 2009	16:00	MST
15 - May - 2009	21:00	MST
15 - May - 2009	22:18	MST
15 - May - 2009	23:04	MST
16 - May - 2009	00:15	MST

### Well Data

Description	New / Used	Max pressure psig	Size in	ID in	Weight lbm/ft	Thread	Grade	Top MD ft	Bottom MD ft	Top TVD ft	Bottom TVD ft
-------------	------------	-------------------	---------	-------	---------------	--------	-------	-----------	--------------	------------	---------------

### Sales/Rental/3<sup>rd</sup> Party (HES)

Description	Qty	Qty uom	Depth	Supplier
PLUG, CMTG, TOP, 8 5/8, HWE, 7.20 MIN/8.09 MA	1	EA		
ADC (AUTO DENSITY CTRL) SYS, /JOB, ZI	1	JOB		

### Tools and Accessories

Type	Size	Qty	Make	Depth	Type	Size	Qty	Make	Depth	Type	Size	Qty	Make
Guide Shoe					Packer					Top Plug	8.625	1	
Float Shoe					Bridge Plug					Bottom Plug			
Float Collar					Retainer					SSR plug set			
Insert Float										Plug Container	8.625	1	
Stage Tool										Centralizers			

### Miscellaneous Materials

Gelling Agt	Conc	Surfactant	Conc	Acid Type	Qty	Conc	%
Treatment Fld	Conc	Inhibitor	Conc	Sand Type	Size	Qty	



Fluid Data										
Stage/Plug #: 1										
Fluid #	Stage Type	Fluid Name	Qty	Qty uom	Mixing Density lbm/gal	Yield ft <sup>3</sup> /sk	Mix Fluid Gal/sk	Rate bbl/min	Total Mix Fluid Gal/sk	
1	DYE SPACER AND POLYFLAKE		30	bbl	.	.0	.0	6.0		
2	Lead Cement	VERSACEM (TM) SYSTEM (452010)	120	sacks	12.3	2.37	13.76	6.0	13.42	
	13.418 Gal	FRESH WATER								
3	Tail Cement	VERSACEM (TM) SYSTEM (452010)	150	sacks	12.8	2.11	11.75	6.0	11.46	
	11.456 Gal	FRESH WATER								
4	DISPLACEMENT		60.4	bbl	.	.0	.0	8.0		
Calculated Values			Pressures			Volumes				
Displacement	60.4	Shut In: Instant		Lost Returns	0	Cement Slurry	98	Pad		
Top Of Cement	SURFACE	5 Min		Cement Returns	20	Actual Displacement	60.4	Treatment		
Frac Gradient		15 Min		Spacers	30	Load and Breakdown		Total Job	188.4	
Rates										
Circulating	RIG	Mixing	6	Displacement	8	Avg. Job	7			
Cement Left In Pipe	Amount	0 ft	Reason	Shoe Joint						
Frac Ring # 1 @	ID	Frac ring # 2 @	ID	Frac Ring # 3 @	ID	Frac Ring # 4 @	ID			
The Information Stated Herein Is Correct				Customer Representative Signature						

*The Road to Excellence Starts with Safety*

Sold To #: 338668	Ship To #: 2713340	Quote #:	Sales Order #: 6667274
Customer: CHEVRON - MID-CONTINENT EBIZ	Customer Rep: Doherty, Ed		
Well Name: SKR	Well #: 698-09-AV-02	API/UWI #: 05-045-17298	
Field: SKINNER RIDGE	City (SAP): PARACHUTE	County/Parish: Garfield	State: Colorado
Legal Description:			
Lat: N 39.551 deg. OR N 39 deg. 33 min. 3.391 secs.		Long: W 108.33 deg. OR W -109 deg. 40 min. 12.756 secs.	
Contractor: H&P 318	Rig/Platform Name/Num: H&P 318		
Job Purpose: Cement Surface Casing	Ticket Amount:		
Well Type: Development Well	Job Type: Cement Surface Casing		
Sales Person: HARTLEY, RICHARD	Srv Supervisor: CALDWELL, JEFFREY	MBU ID Emp #: 369111	

Activity Description	Date/Time	Cht #	Rate bbl/min	Volume bbl		Pressure psig		Comments
				Stage	Total	Tubing	Casing	
Call Out	05/15/2009 16:00							ELITE #9
Pre-Convoy Safety Meeting	05/15/2009 17:30							PLUG CONTAINER #D0894
Crew Leave Yard	05/15/2009 17:35							JASON GALLEGOS IS SAFETY OBSERVER ON JOB.
Arrive At Loc	05/15/2009 21:00							CASING WAS STILL BEING RUN.
Safety Meeting	05/15/2009 21:05							ALL PERSONAL ASSOCIATED WITH JOB ATTENDED.
Rig-Up Equipment	05/15/2009 21:15							
Pre-Job Safety Meeting	05/15/2009 22:00							ALL PERSONAL ASSOCIATED WITH JOB ATTENDED.
Start Job	05/15/2009 22:18							TD:1010 TP:993 SJ:43 MUD:9.2 PPG 12 1/4" OPEN HOLE.
Prime Pumps	05/15/2009 22:18		1.5	2	2		36.0	H2O
Test Lines	05/15/2009 22:20					3000.0		
Pump Spacer	05/15/2009 22:22		5	30	30		140.0	10 LBS. POLYFLAKE AND 5 LBS. DYE LAST 20 BBLS.
Pump Lead Cement	05/15/2009 22:31		6	50.9	50		255.0	120 SKS 12.3 PPG 2.38 CUFT/SAK 13.75 GAL/SAK
Pump Tail Cement	05/15/2009 22:41		6	56.4	48		251.0	150 SKS 12.8 PPG 2.11 CUFT/SAK 11.75 GAL/SAK

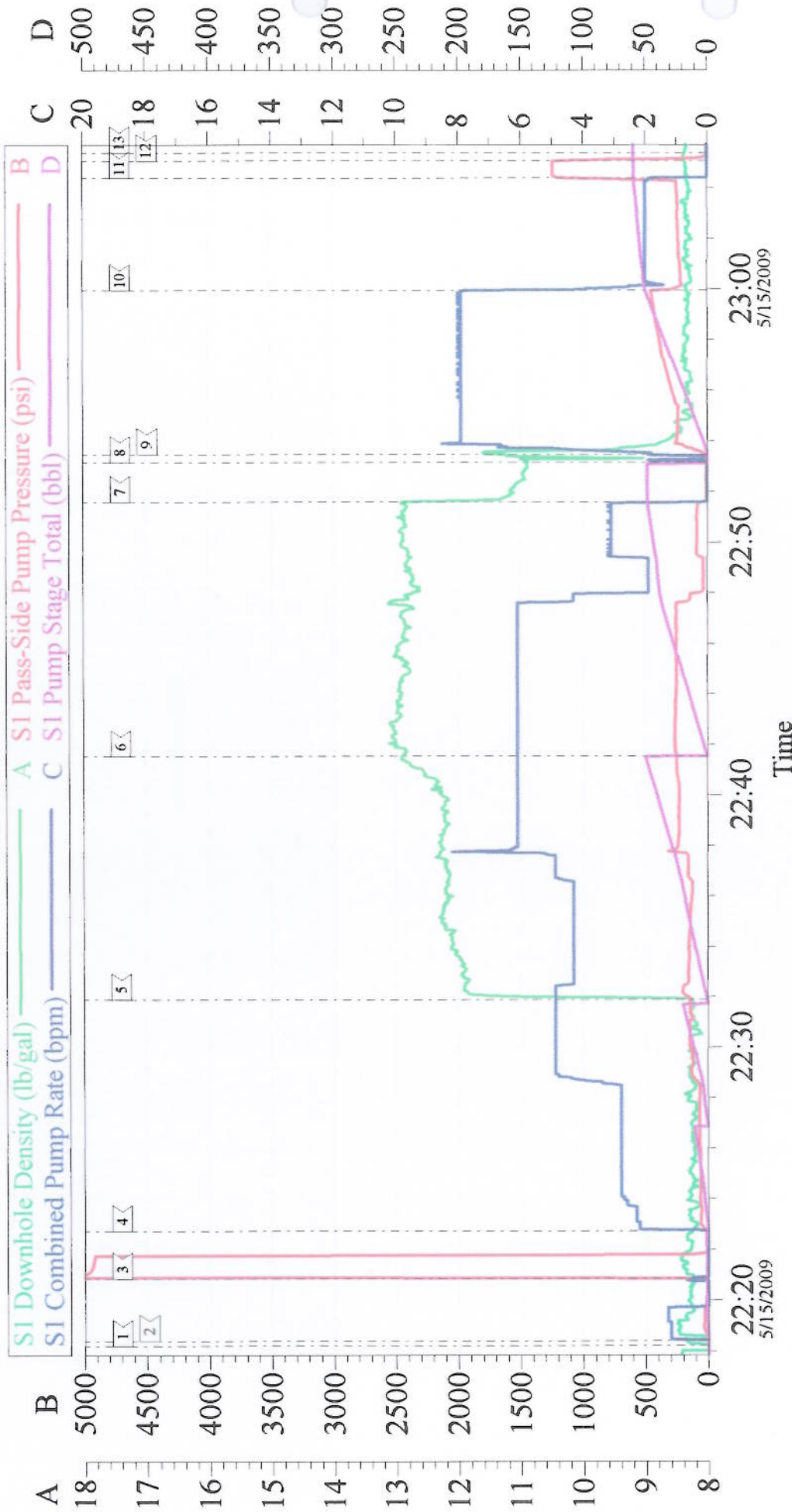


## Cementing Job Log

Activity Description	Date/Time	Cht #	Rate bbl/ min	Volume bbl		Pressure psig		Comments
				Stage	Total	Tubing	Casing	
Shutdown	05/15/2009 22:51							BP:13 WP:120
Drop Top Plug	05/15/2009 22:53							PLUG AWAY
Pump Displacement	05/15/2009 22:53		8	60.4	60.4		425.0	H2O
Slow Rate	05/15/2009 22:59		2	50	50		215.0	20 BBLS OF CEMENT BACK TO SURFACE.
Bump Plug	05/15/2009 23:04		2	60.4	60.4		1220. 0	
Check Floats	05/15/2009 23:05							FLOATS HELD 1/2 BBL BACK. GOOD CIRCULATION THROUGH OUT JOB.
End Job	05/15/2009 23:05							
Post-Job Safety Meeting (Pre Rig-Down)	05/15/2009 23:10							
Rig-Down Equipment	05/15/2009 23:10							
Crew Leave Location	05/15/2009 23:59							THANK YOU FOR CHOOSING HALLIBURTON JEFF CALDWELL AND CREW.

# CHEVRON

## 8 5/8 SURFACE



Customer: Chevron	Job Date: 15-May-2009	Sales Order #: 6667274
Well Description: SKR 698-09-AV-02	Job Type: 8 5/8 Surface	ADC Used: Yes
Company Rep: Ed Doherty	Cement Supervisor: Jeff Caldwell	Elite #: Elite #9/Mike Triplett